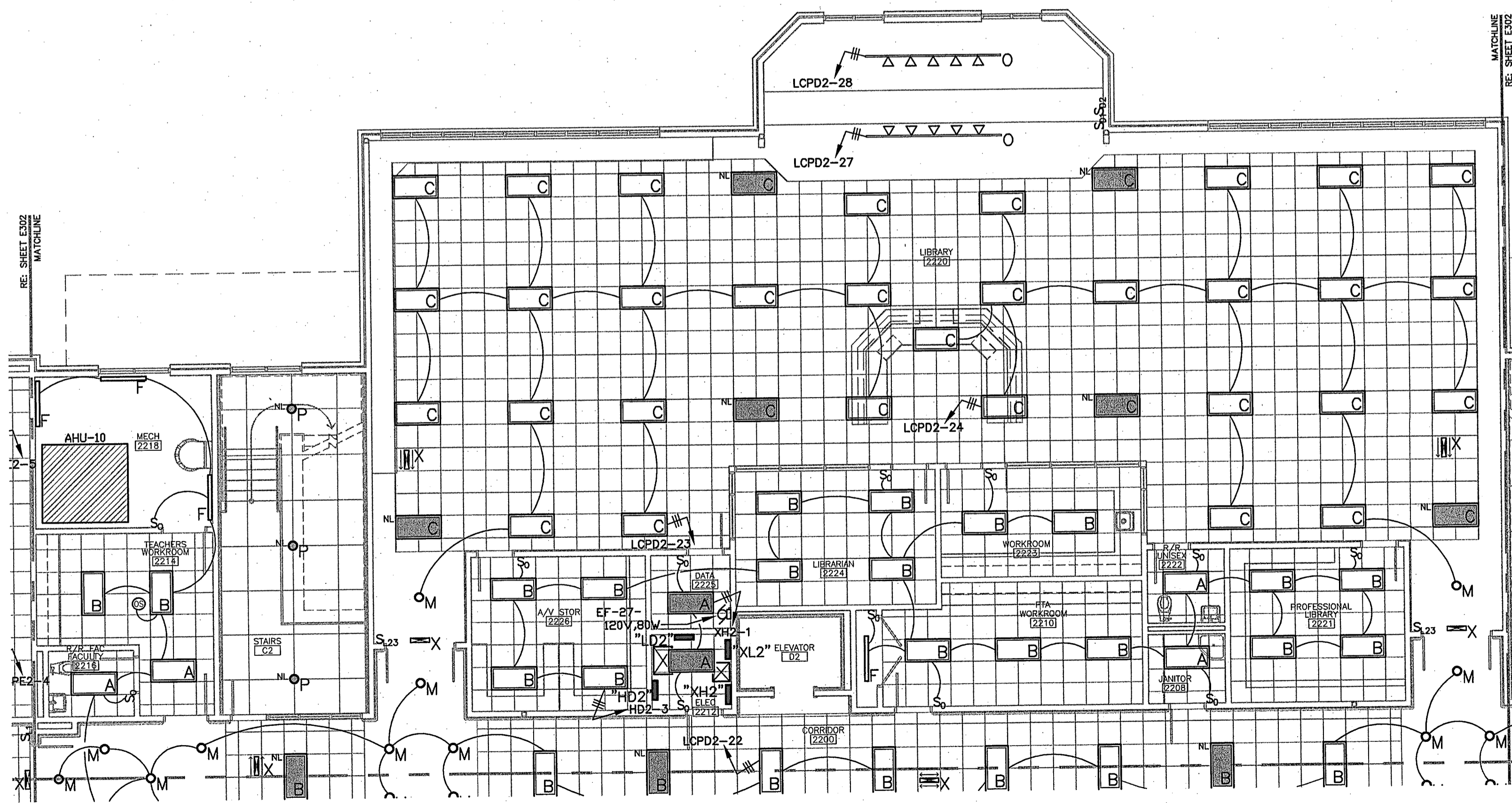


**LIGHTING PLAN NOTES**

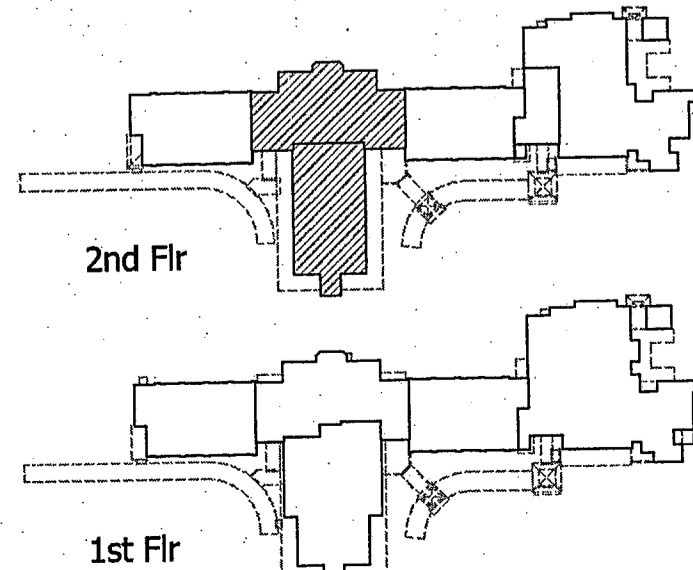
1. VERIFY THE EXACT LOCATION OF ALL LIGHT FIXTURES WITH THE ARCHITECTURAL REFLECTED CEILING PLAN.
2. VERIFY THE EXACT LOCATION OF ALL LIGHT SWITCHES WITH THE ARCHITECT PRIOR TO ROUGH-IN.
3. LIGHT FIXTURES WITH "NL" SERVE AS NIGHT LIGHTS AS WELL AS EMERGENCY LIGHTS AND SHALL REMAIN ON AT ALL TIMES.
4. CONNECT ALL NIGHT LIGHT FIXTURES & EXIT SIGNS TOGETHER ON RELAYS #LCPD2-25 & 26
5. LIGHT FIXTURES SHOWN "SHADED" ARE ON EMERGENCY POWER.
6. LOW-VOLTAGE LIGHT SWITCH SHALL CONTROL OCCUPANCY SENSOR, WHEN SOMEONE ENTERS THE ROOM THE LIGHTS SHALL AUTOMATICALLY COME ON (CONTROLLED BY OCCUPANCY SENSOR), THE LIGHTS CAN THEN BE MANUALLY TURNED OFF BY THE LOW-VOLTAGE LIGHT SWITCHES. AFTER THE ROOM IS UNOCCUPIED FOR A PERIOD OF TIME THE OCCUPANCY SENSORS WILL ONCE AGAIN TAKE CONTROL OF THE LIGHTS. THIS IS TYPICAL FOR ALL ROOMS WITH CEILING MOUNT OCCUPANCY SENSORS AND LOW-VOLTAGE LIGHT SWITCHES.



**LIGHTING PLAN-  
2 SECOND FLOOR WING 2200**  
SCALE: 1/8" = 1'-0"



**LIGHTING PLAN-  
1 SECOND FLOOR WING 2100**  
SCALE: 1/8" = 1'-0"



**ANDREW GASAWAY, JR., ARCHITECT, AIA, AIA**  
**BRET GASAWAY, ARCHITECT, AIA, NCARB**  
**CHRIS BANKSTON, ARCHITECT, AIA, NCARB, LEED AP**

**GGP**  
**Gasaway | Gasaway | Bankston**  
**Architects + Planners**

1027 W. THOMAS ST., SUITE G  
 HANCOCK, LA 70601  
 985-345-5847  
 985-345-5840

**JOSEPH B. LANCASTER**  
**ELEMENTARY SCHOOL**  
**ST. TAMMANY PARISH SCHOOL BOARD**  
**MADISONVILLE, LOUISIANA**  
**STPSB PROJECT #0825**

THIS DRAWING IS AN INSTRUMENT OF SERVICE, IS AND SHALL REMAIN THE PROPERTY OF THE ARCHITECT AND SHALL NOT BE REPRODUCED, PUBLISHED OR USED IN ANY WAY WITHOUT THE EXPRESS PERMISSION OF THE ARCHITECT.

PROJ. NO.	0825
REVISION DATE	06.25.09

Daniel T. Calongne  
 REG. NO. 15220  
 PROFESSIONAL ENGINEER  
 STATE OF LOUISIANA

**E303**

GASAWAY ■ BANKSTON ■ ARCHITECTS & PLANNERS  
 PROFESSIONAL OF RECORD  
 SHEET NO.

7911 Winwood Blvd., Suite D  
 Baton Rouge, Louisiana 70809  
 voice (225)938-9922 fax (225)938-8444