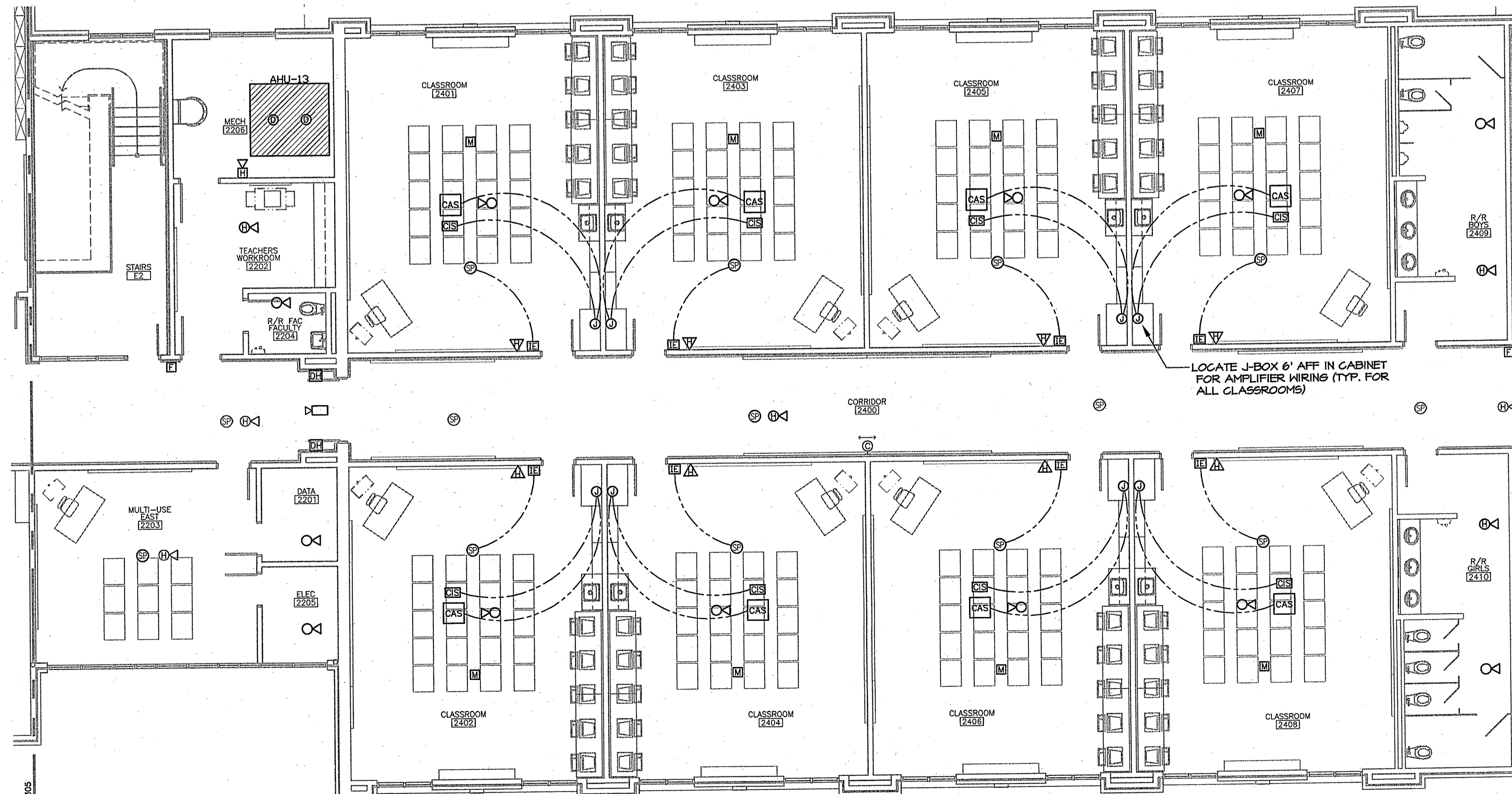
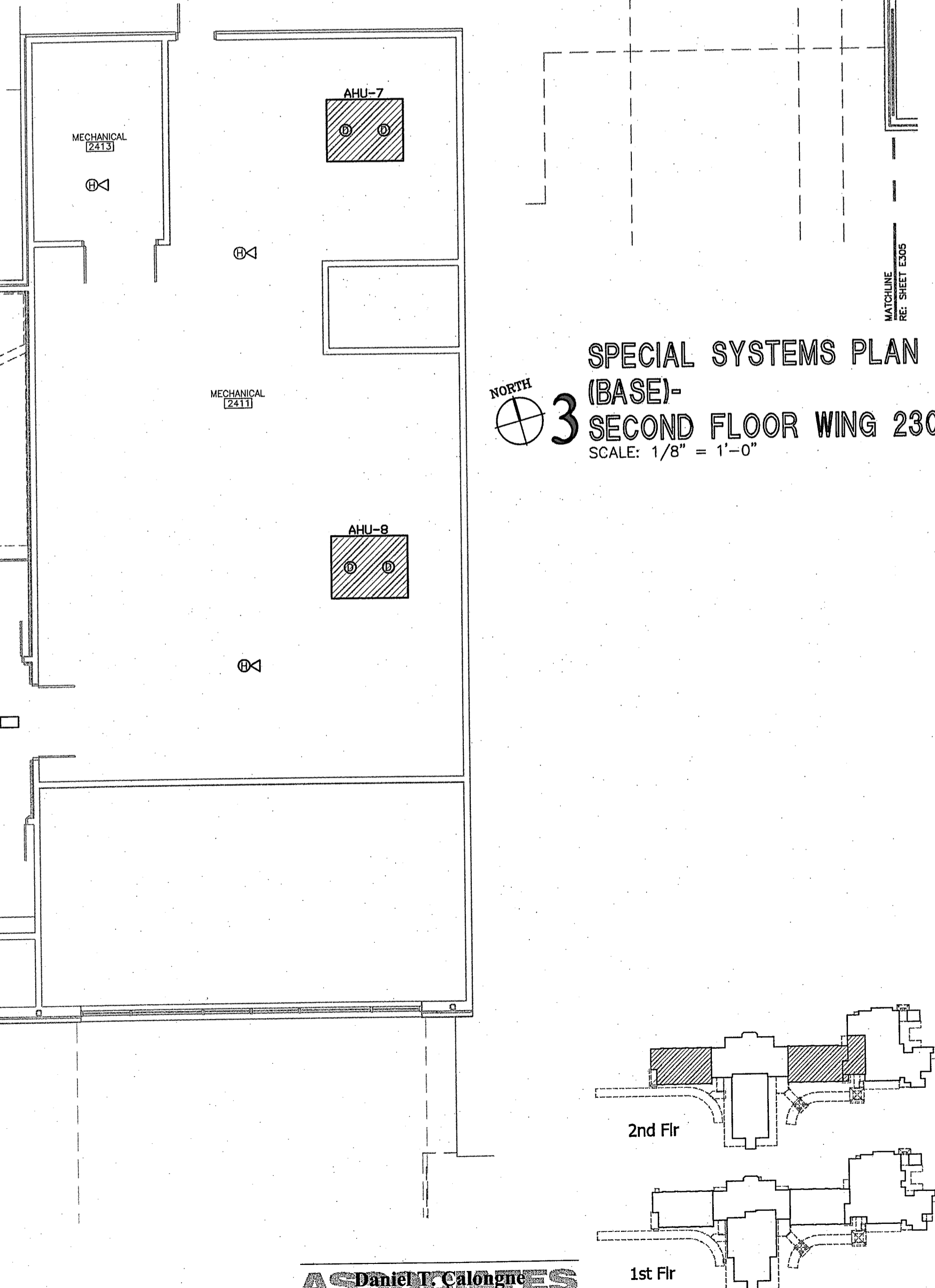


**1 SPECIAL SYSTEMS PLAN (ALTERNATE)-
SECOND FLOOR WING 2300**
SCALE: 1/8" = 1'-0"

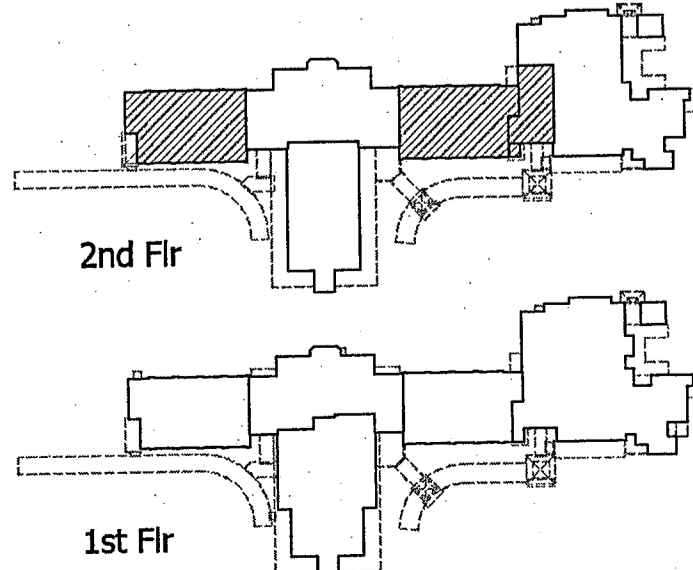


**2 SPECIAL SYSTEMS PLAN-
SECOND FLOOR WING 2400**
SCALE: 1/8" = 1'-0"

- SPECIAL SYSTEMS PLAN NOTES**
1. LOCATE ALL FIRE ALARM SYSTEM DEVICES PER ADA REQUIREMENTS.
 2. COORDINATE THE LOCATION OF ALL CEILING MOUNTED DEVICES WITH THE ARCHITECTURAL REFLECTED CEILING PLAN.
 3. SECURITY SYSTEM FURNISHED, INSTALLED AND CONNECTED BY ELECTRICAL CONTRACTOR.
 4. ALL MOTION DETECTOR TEST SWITCHES SHALL BE TURNED OFF PRIOR TO TURNING THE SECURITY SYSTEM OVER TO THE OWNER.
 5. COORDINATE THE EXACT LOCATION OF SECURITY SYSTEM MOTION DETECTORS AND KEYPADS WITH THE OWNER PRIOR TO ROUGH-IN.
 6. ROUTE ONE (1) GREEN CAT 6 CABLE ABOVE THE CEILING JOIST FROM EACH CAMERA LOCATION SHOWN TO THE NEAREST DATA ROOM; LEAVE 12' OF SLACK CABLE AT EACH END FOR THE INTERIOR CAMERA LOCATIONS; LEAVE 12' OF SLACK CABLE AT THE DATA ROOM & 20' OF SLACK CABLE AT THE CAMERA FOR THE EXTERIOR CAMERA LOCATIONS. LOCATE J-BOXES FOR EXTERIOR CAMERAS (TOTAL OF 4) 10' AFF-VERIFY EXACT LOCATION WITH THE ARCHITECT PRIOR TO ROUGH-IN.
 7. COORDINATE EXACT LOCATION OF ALL CLOCKS WITH THE ARCHITECT PRIOR TO ROUGH-IN.



**3 SPECIAL SYSTEMS PLAN
(BASE)-
SECOND FLOOR WING 2300**
SCALE: 1/8" = 1'-0"



AS Daniel T. Calongne
7811 Wrenwood Blvd., Suite D
Baton Rouge, Louisiana 70809
voice (225)922-9223 fax (225)922-9414

GGB
Gasaway | Gasaway | Bankston
Architects + Planners
1007 W. THOMAS ST., SUITE G
HAMMOND, LA 70401
985-345-5947
985-345-5900

ANDREW GASAWAY, JR., ARCHITECT, AIA, APA
BRET GASAWAY, ARCHITECT, AIA, NCARB
CHRIS BANKSTON, ARCHITECT, AIA, NCARB, LEED AP

JOSEPH B. LANCASTER
ELEMENTARY SCHOOL
ST. TAMMANY PARISH SCHOOL BOARD
MADISONVILLE, LOUISIANA
STPSB PROJECT #0825

THIS DRAWING IS AN INSTRUMENT OF SERVICE, IS AND SHALL REMAIN THE PROPERTY OF THE ARCHITECT AND SHALL NOT BE REPRODUCED, PUBLISHED OR USED IN ANY WAY WITHOUT THE EXPRESS PERMISSION OF THE ARCHITECT.

PROJ. NO.	0825
DATE	06.25.09
REVISED	

Daniel T. Calongne
PROFESSIONAL OF RECORD
REG. NO. 15220
STATE OF LOUISIANA
ARCHITECT

E304