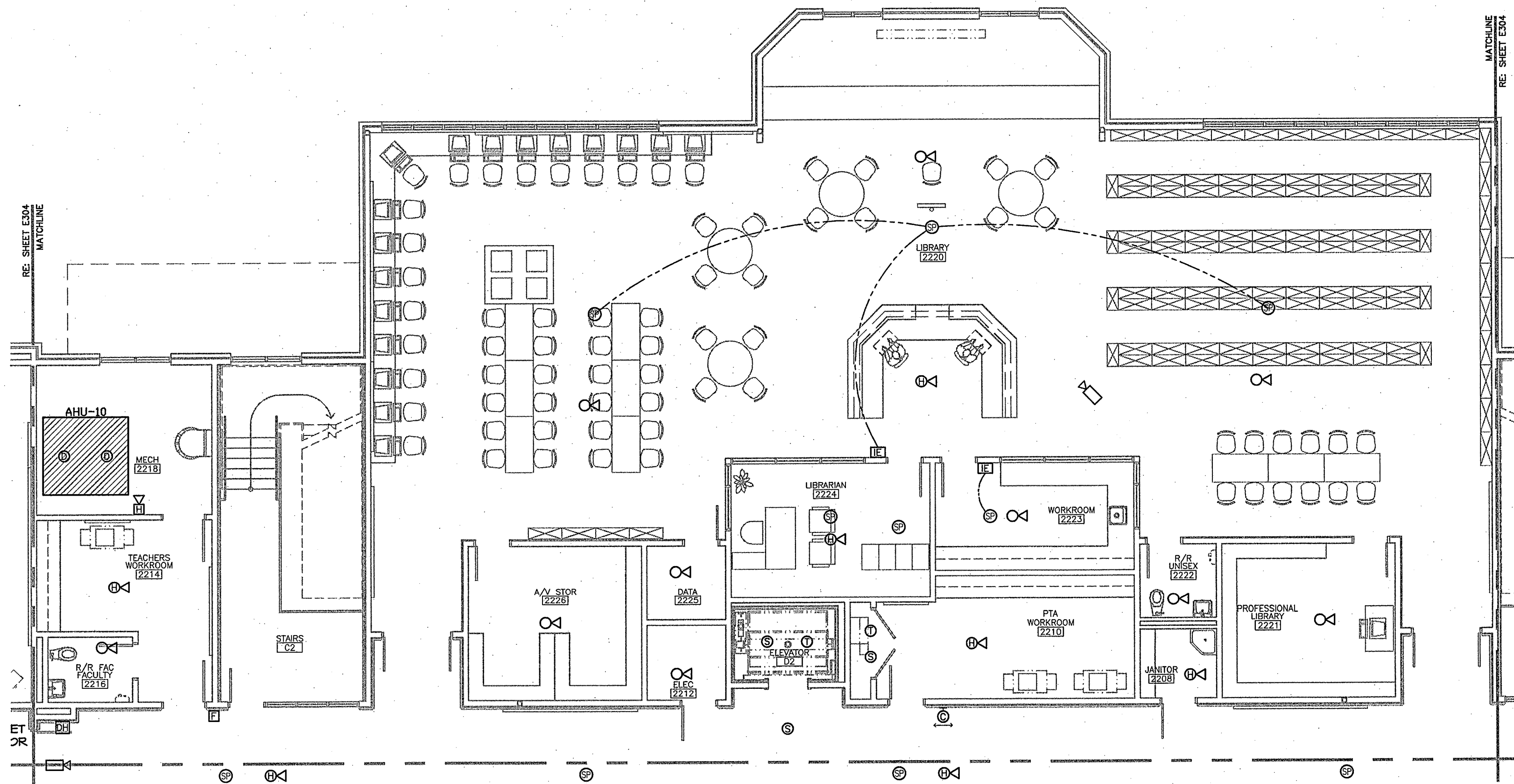
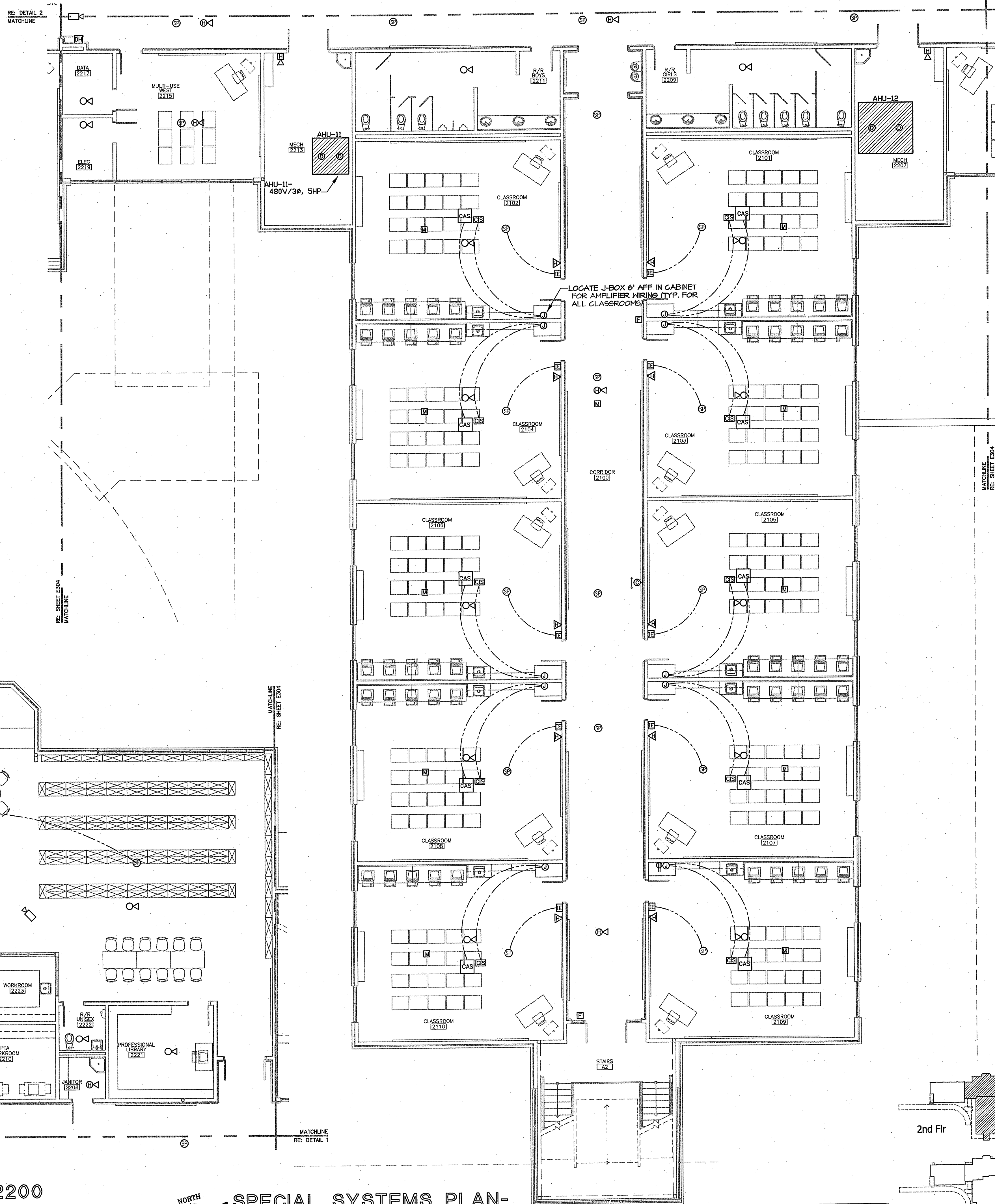


**SPECIAL SYSTEMS PLAN NOTES**

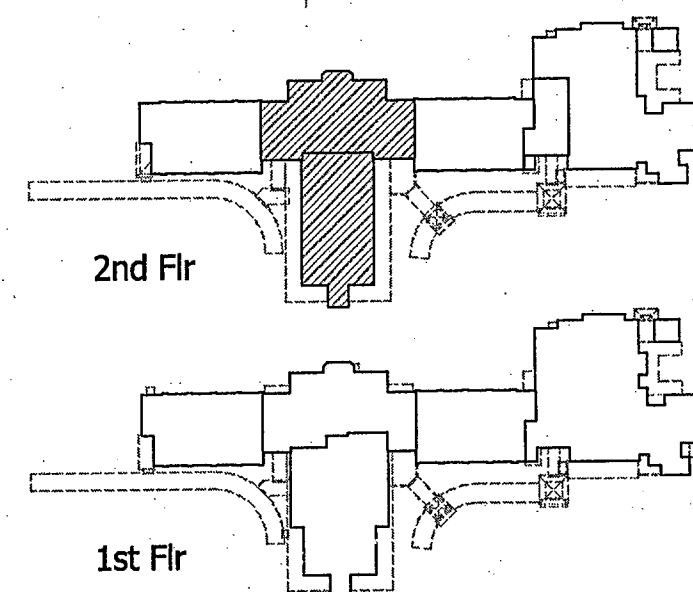
1. LOCATE ALL FIRE ALARM SYSTEM DEVICES PER ADA REQUIREMENTS.
2. COORDINATE THE LOCATION OF ALL CEILING MOUNTED DEVICES WITH THE ARCHITECTURAL REFLECTED CEILING PLAN.
3. SECURITY SYSTEM FURNISHED, INSTALLED AND CONNECTED BY ELECTRICAL CONTRACTOR.
4. ALL MOTION DETECTOR TEST SWITCHES SHALL BE TURNED OFF PRIOR TO TURNING THE SECURITY SYSTEM OVER TO THE OWNER.
5. COORDINATE THE EXACT LOCATION OF SECURITY SYSTEM MOTION DETECTORS AND KEYPADS WITH THE OWNER PRIOR TO ROUGH-IN.
6. COORDINATE THE EXACT LOCATION OF SECURITY SYSTEM MOTION DETECTORS AND KEYPADS WITH THE OWNER PRIOR TO ROUGH-IN.
7. INSTALL WIRE GUARDS ON ALL DEVICES IN GYMNASIUM 100.
8. INSTALL WIRE GUARD CAGE ON ALL EXTERIOR SPEAKERS.
9. ROUTE ONE (1) GREEN CAT 6 CABLE ABOVE THE CEILING JOIST FROM EACH CAMERA LOCATION SHOWN TO THE NEAREST DATA ROOM; LEAVE 12" OF SLACK CABLE AT EACH END FOR THE INTERIOR CAMERA LOCATIONS; LEAVE 12" OF SLACK CABLE AT THE DATA ROOM & 20' OF SLACK CABLE AT THE CAMERA FOR THE EXTERIOR CAMERA LOCATIONS. LOCATE J-BOXES FOR EXTERIOR CAMERAS (TOTAL OF 4) 10' AFF- VERIFY EXACT LOCATION WITH THE ARCHITECT PRIOR TO ROUGH-IN.
10. COORDINATE EXACT LOCATION OF ALL CLOCKS WITH THE ARCHITECT PRIOR TO ROUGH-IN.



**2 SPECIAL SYSTEMS PLAN-  
SECOND FLOOR SECTION 2200**  
SCALE: 1/8" = 1'-0"



**1 SPECIAL SYSTEMS PLAN-  
FIRST FLOOR WING 2100**  
SCALE: 1/8" = 1'-0"



**ASAP**  
**Daniel T. Calongne**  
 REGISTERED PROFESSIONAL ARCHITECT  
 STATE OF LOUISIANA  
 REG. NO. 15220  
 PROJECT NO. 0825

**ASAP**  
**Gasaway Gasaway Bankston**  
 Architects + Planners  
 1007 W. THOMAS ST., SUITE G  
 HAMMOND, LA 70401  
 985.345.5047  
 985.345.5040  
 FAX 985.345.5040

**JOSEPH B. LANCASTER**  
**ELEMENTARY SCHOOL**  
 ST. TAMMANY PARISH SCHOOL BOARD  
 MADISONVILLE, LOUISIANA  
 STPSB PROJECT #0825

THIS DRAWING IS AN INSTRUMENT OF SERVICE, IS AND SHALL REMAIN THE PROPERTY OF THE ARCHITECT AND SHALL NOT BE REPRODUCED, PUBLISHED OR USED IN ANY WAY WITHOUT THE EXPRESS PERMISSION OF THE ARCHITECT.

PROJECT NO. 0825  
 DATE 06.25.09

SHEET NO. E305