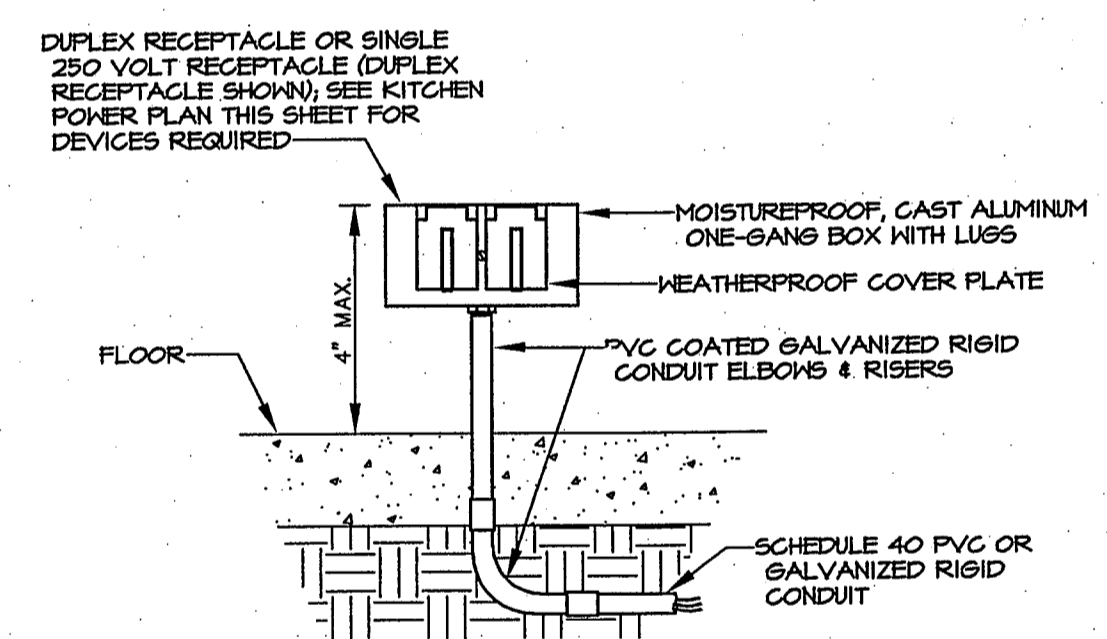


1 ENLARGED POWER PLAN-KITCHEN AREA
SCALE: 1/4" = 1'-0"

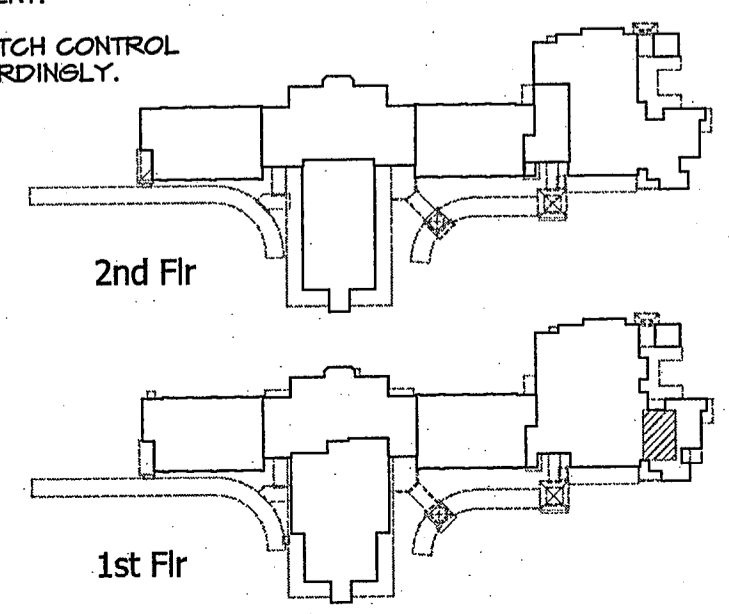
KITCHEN EQUIPMENT SCHEDULE										
ITEM NO	EQUIPMENT NAME	VOLTS	PHASE	AMPS	HP	KW	DIRECT PLUG	NEMA	ELECTRICAL AFF. (IN)	ELECTRICAL REMARKS
1a	SERVING LINE	208	1	23.2			Y	6-30		FURNISH CORD AND PLUG
2	MILK COOLER	120	1	5	1/5		Y	5-20		
3a	REFRIGERATOR	120	1	8.3			Y	5-20		LOCATE FLUSH IN FLOOR
4	HOT FOOD CABINET	120/208	1	19.75			N	L14-30		FURNISH CORD & PLUG; MOUNT IN CEILING
7	FOOD MIXER	120	1	19			Y	5-30		FURNISH CORD AND PLUG
8	FOOD CUTTER MIXER	208	3		5		Y	L21-30	24	
9	FOOD PROCESSOR	120	1		1/2		Y	5-20	48	FURNISH CORD AND PLUG
10	FOOD SLICER	120	1	7	1/2		Y	5-20	48	
11	FOOD CUTTER	120	1		1/2		Y	5-20	48	
12	CAN OPENER	120	1				Y	5-20	48	FURNISH CORD AND PLUG
19	DISHWASHER	120	1		3/4		Y	5-20		20A CIRCUIT; FURNISH CORD & PLUG
20a	DOUBLE CONVECTION OVEN	120	1	7.4			Y	5-20		
22	TILTING BRASING PAN	120	1	5			Y	5-20		FURNISH CORD & PLUG
23	COMBO STEAMER/OVEN	120	1				Y	5-20		20A CIRCUIT; FURNISH CORD & PLUG
24a	FRYER	120	1	10			Y	5-20		FURNISH CORD & PLUG
27a	WALK-IN COOLER									
	LIGHTS/DOOR HEATER	120	1	1.5						
	EVAPORATOR	120	1	11.7						
	CONDENSER	208	3		1					
27b	WALK-IN FREEZER									
	LIGHTS/DOOR HEATER	120	1	1.9						
	EVAPORATOR	120	1	16						
	CONDENSER	208	3		2.5					

- KITCHEN POWER PLAN NOTES**
1. VERIFY THE EXACT LOCATION AND REQUIREMENTS OF ALL KITCHEN EQUIPMENT WITH THE MANUFACTURER/INSTALLER PRIOR TO ROUGH-IN.
 2. FURNISH ALL KITCHEN EQUIPMENT WITH CORDS & PLUGS IF NOT FURNISHED WITH ONE FROM THE MANUFACTURER.
 3. INTERCONNECT THE KITCHEN EQUIPMENT BELOW THE HOOD AND THE HOOD SUPPLY FAN TO THE HOOD EXTINGUISHING SYSTEM SO THAT WHEN THE HOOD SYSTEM IS ACTIVATED, THAT KITCHEN EQUIPMENT AND SUPPLY FAN WILL STOP OPERATING.
 4. VERIFY THE EXACT LOCATIONS OF ALL DEVICES SHOWN WITH THE ARCHITECT PRIOR TO ROUGH-IN.



2 DETAIL OF FLOOR MOUNTED RECEPTACLE
NOT TO SCALE

- KITCHEN POWER PLAN KEYNOTES**
1. LOCATE DUPLEX RECEPTACLE FOR ENG; COORDINATE WITH THE PLUMBING CONTRACTOR.
 2. LOCATE DUPLEX RECEPTACLE 48" AFF.
 3. FLOOR MOUNT RECEPTACLE; SEE DETAIL 2 THIS SHEET.
 4. J-BOX FOR CONNECTION OF WALK-IN LIGHTS; COORDINATE WITH MANUFACTURER/INSTALLER.
 5. LOCATE DOOR SWITCH IN DOOR FRAME - WHEN THE DOOR IS OPENED, THE AIR CURTAIN SHALL OPERATE; ROUTE ALL WIRING CONCEALED IN WALL & DOOR FRAME.
 6. J-BOX FOR CONNECTION OF WALK-IN FREEZER DOOR/DRAIN HEATER.
 7. LOCATE J-BOX ABOVE CEILING FOR CONNECTION OF FUTURE ITEM 3a.
 8. LOCATE DUPLEX RECEPTACLE BEHIND ENG; COORDINATE WITH PLUMBING CONTRACTOR.
 9. LOCATE DUPLEX RECEPTACLE 48" AFF FOR FUTURE EQUIPMENT.
 10. COORDINATE EXACT LOCATION OF HOOD FANS & LIGHT SWITCH CONTROL PANEL WITH THE HOOD SYSTEM INSTALLER & LOCATE ACCORDINGLY.



ASUCCI ASSOCIATES
7111 Greenwood Blvd., Suite D
Baton Rouge, Louisiana 70809
voice (225) 922-3223 fax (225) 922-9414

GGP
Gasaway | Gasaway | Bankston
Architects + Planners
1001 W. THOMAS ST., SUITE G
HAMMOND, LA 70401
985.345.5047
FAX 985.345.5040

JOSEPH B. LANCASTER
ELEMENTARY SCHOOL
ST. TAMMANY PARISH SCHOOL BOARD
MADISONVILLE, LOUISIANA
STPSB PROJECT #0825

PROJ. NO. **0825**
DATE **06.25.09**

PROFESSIONAL OF RECORD
DANIEL T. CALONGNE
REG. NO. 15220
REGISTERED PROFESSIONAL ELECTRICAL ENGINEER

E400

THIS DRAWING IS AN INSTRUMENT OF SERVICE, IS AND SHALL REMAIN THE PROPERTY OF THE ARCHITECT AND SHALL NOT BE REPRODUCED, PUBLISHED OR USED IN ANY WAY WITHOUT THE EXPRESS PERMISSION OF THE ARCHITECT.