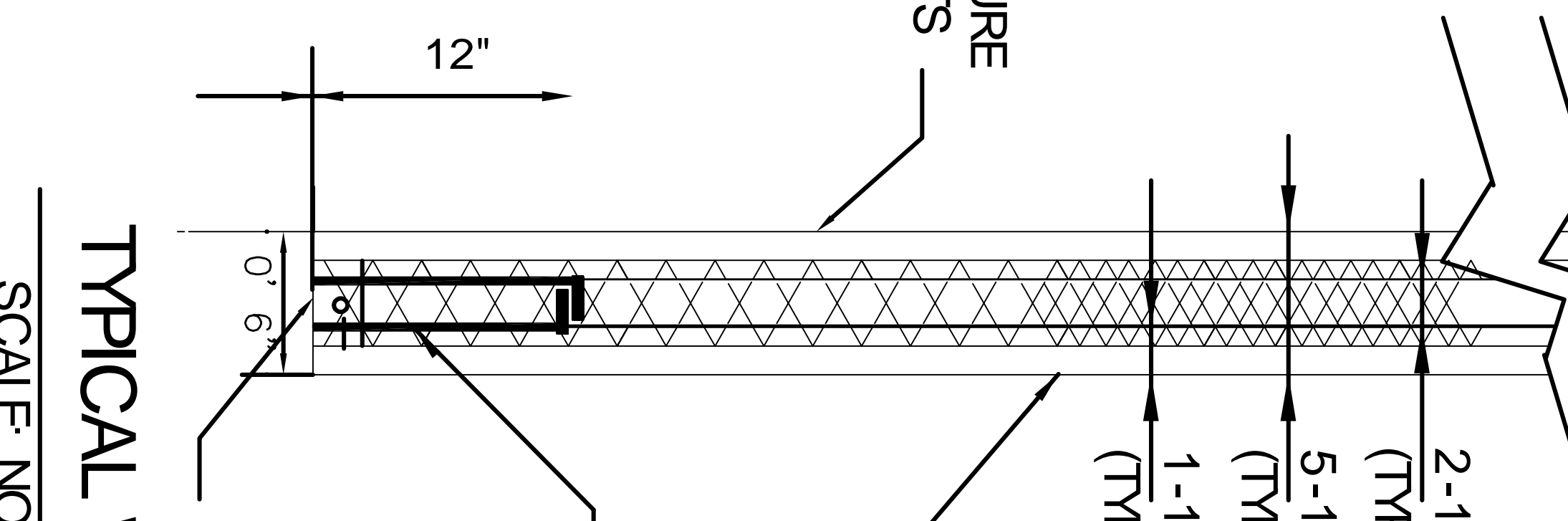
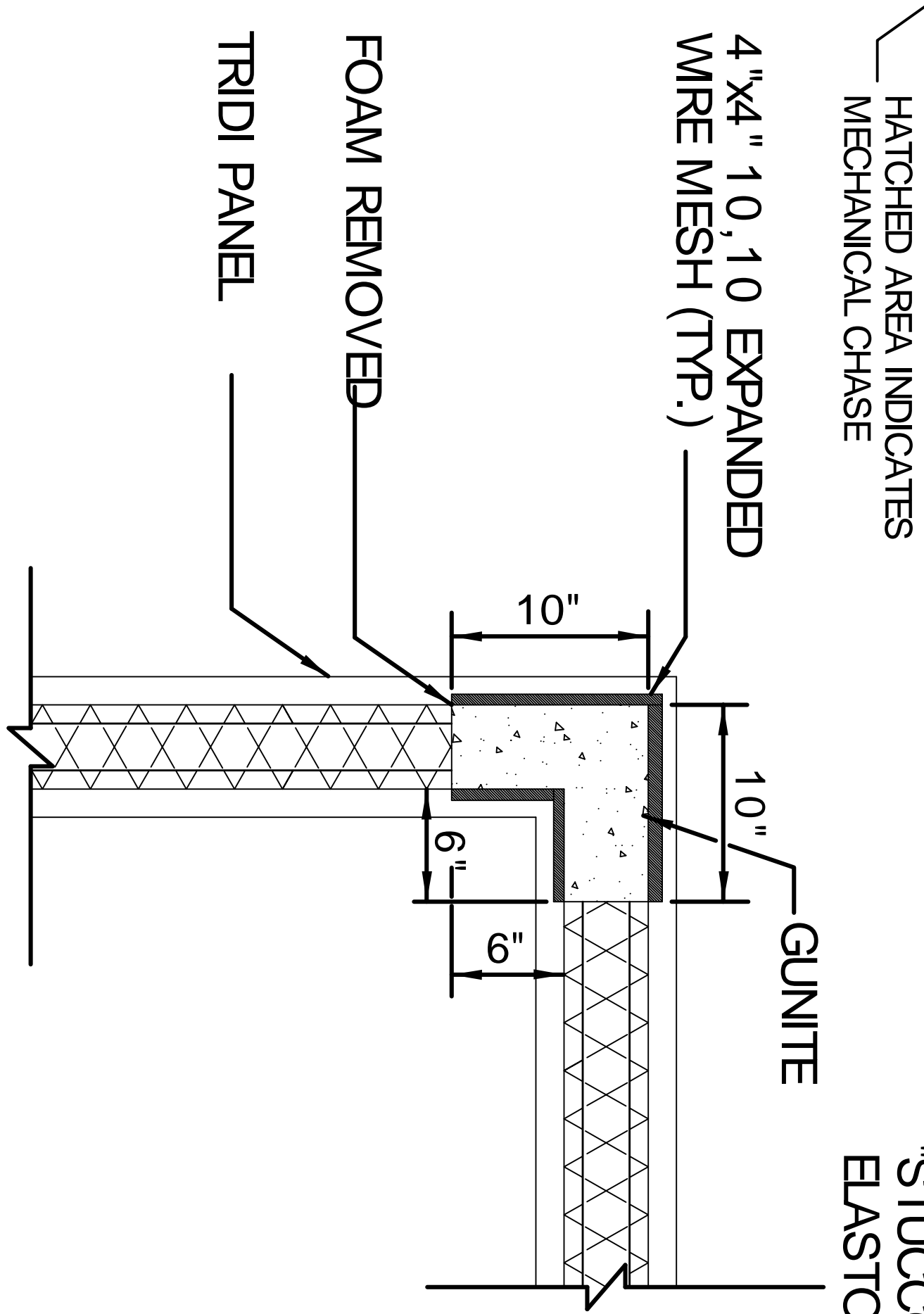
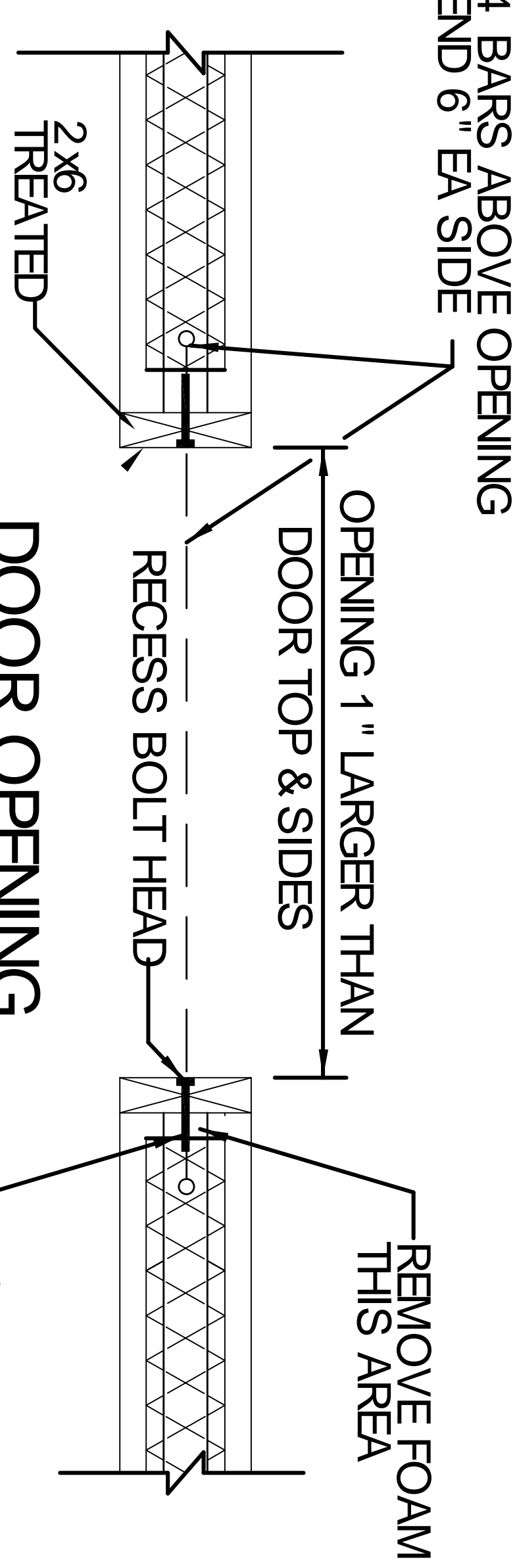


FLOOR PLAN

SCALE 1/4" = 1'-0"



CORNER CONNECTION (TYPICAL)

SCALE: NONE

RATINGS

IBC BASIC WIND SPEED -(3 SECOND GUST)
WIND -140 MPH (WHEN ANCHORED PER HUD REQUIREMENTS)

SNOW - 100 PSF

INSULATION

EXTERIOR WALLS	R= 42
ROOF / CEILING	R= 29
FLOOR	R= 10

SPRINKLE PER NFPA 101 INCLUDING ATTIC COMPONENT RATINGS

EXTERIOR WALLS	1 HR
ROOF-	NONE
FLOOR-	1 HR
DOORS -	1 HR
WINDOWS	1 HR

NOTES:

- WHERE FOAM IS REMOVED FROM ANY SECTION OF PANEL, USE EXPANDED METAL LATH FOR BACK UP WHEN SHOOTING GUNITE.
- LAP STEEL BARS MINIMUM OF 16" AT SPLICES.
- SHOTCRETE SHALL BE MINIMUM 4000 PSI.
- REBAR SHALL BE fy 60000 PSI
- WELD CAP ON OPEN ENDS OF ALL OPEN STEEL TUBES
- ALL FRAME WELDING SHALL BE CONTINUOUS, WITH 1/4" FILLET, UNLESS SHOWN OTHERWISE.
- ROOF TRUSSES ROOF AND CEILING JOIST, AND CONNECTIONS TO LGT. GA. METAL SHALL BE WITH APPROPRIATE STAINLESS SHIT METAL SCREWS. BRACE ROOF IN LONGTUDINAL DIRECTION WITH X BRACING EVERY OTHER RAFTER. ATTACH 1 X4 PURLINS W/2- 1 1/2" #6 SCREWS EA RAFTER

DETAIL

SCALE = NONE

