

**DAMMON**  
ENGINEERING, INC.

CHIEF ENGINEER  
EMMETT  
DAMMON, P.E.  
CHIEF ARCHITECT  
ROBERT  
WILTSE

1095 FLORIDA AVENUE  
SLIDELL, LA 70458  
OFFICE: 985-649-5832  
FAX: 985-641-3950

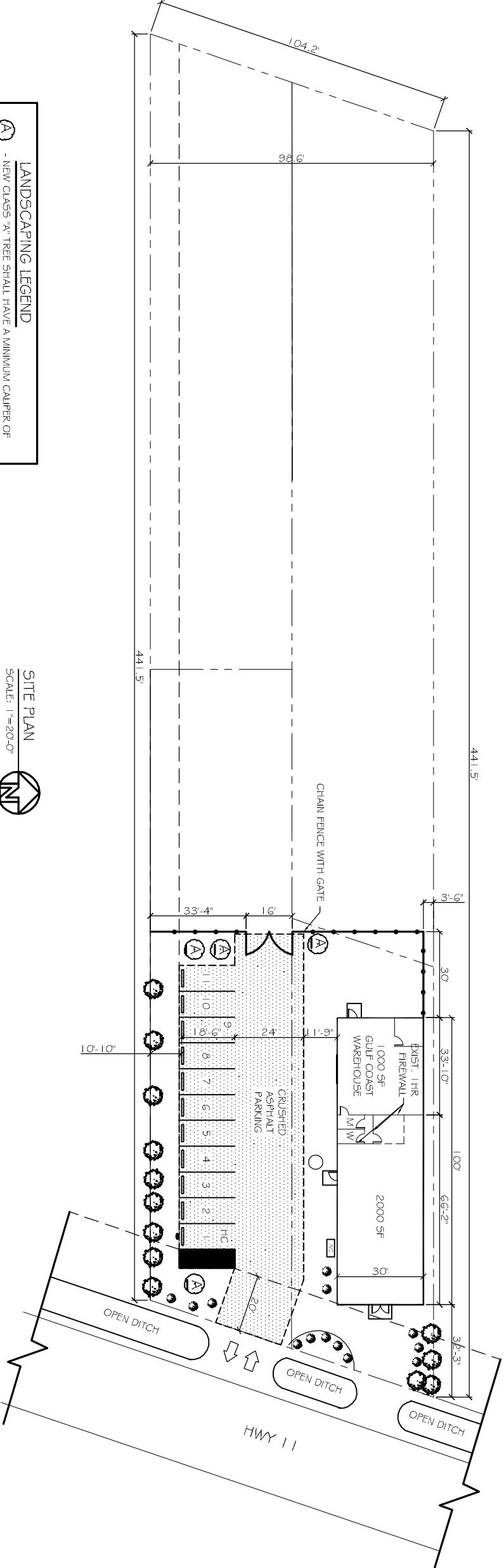
WEBSITE:  
WWW.DAMMONENGINEERING.COM  
EVAL:  
DAMMONENG@BELLOUTH.NET

ARCHITECTURE  
ENGINEERING  
STUDIES  
PLANNING  
INVESTIGATION  
EXPERT WITNESS

DAMMON BLDG.  
60181 HWY 11 N.  
SLIDELL, LA

SITE  
PLAN

REV:	
SCALE:	AS NOTED
JOB#:	
DATE:	12-27-10
SHEET	C-1
OF	



SITE PLAN  
SCALE: 1"=20'-0"



- LANDSCAPING LEGEND**
- (A) - NEW CLASS "A" TREE SHALL HAVE A MINIMUM CALIPER OF AT LEAST 2-1/2" (MEASURED 6" ABOVE ROOT BALL), A MIN. HEIGHT OF 10'-12' AT PLANTING, AND AN OVERALL HEIGHT OF 50' AT MATURITY. (OAK)
  - (B) - SHRUBS 10' O.C. SHALL HAVE A MIN. HEIGHT OF 2' AT TIME OF PLANTING
  - (BY) - EXISTING CREPE MYRTLE