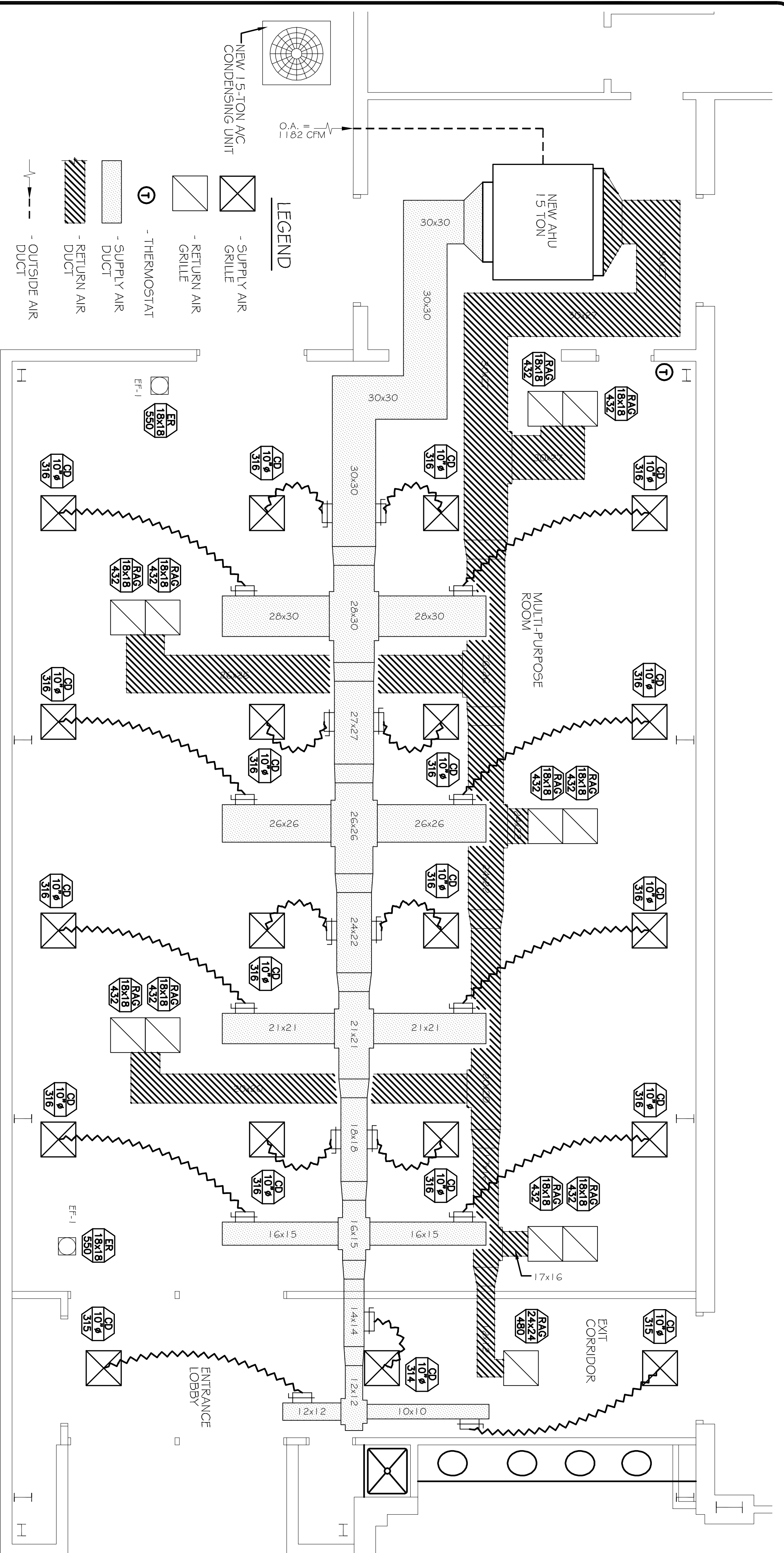


MECHANICAL NOTES

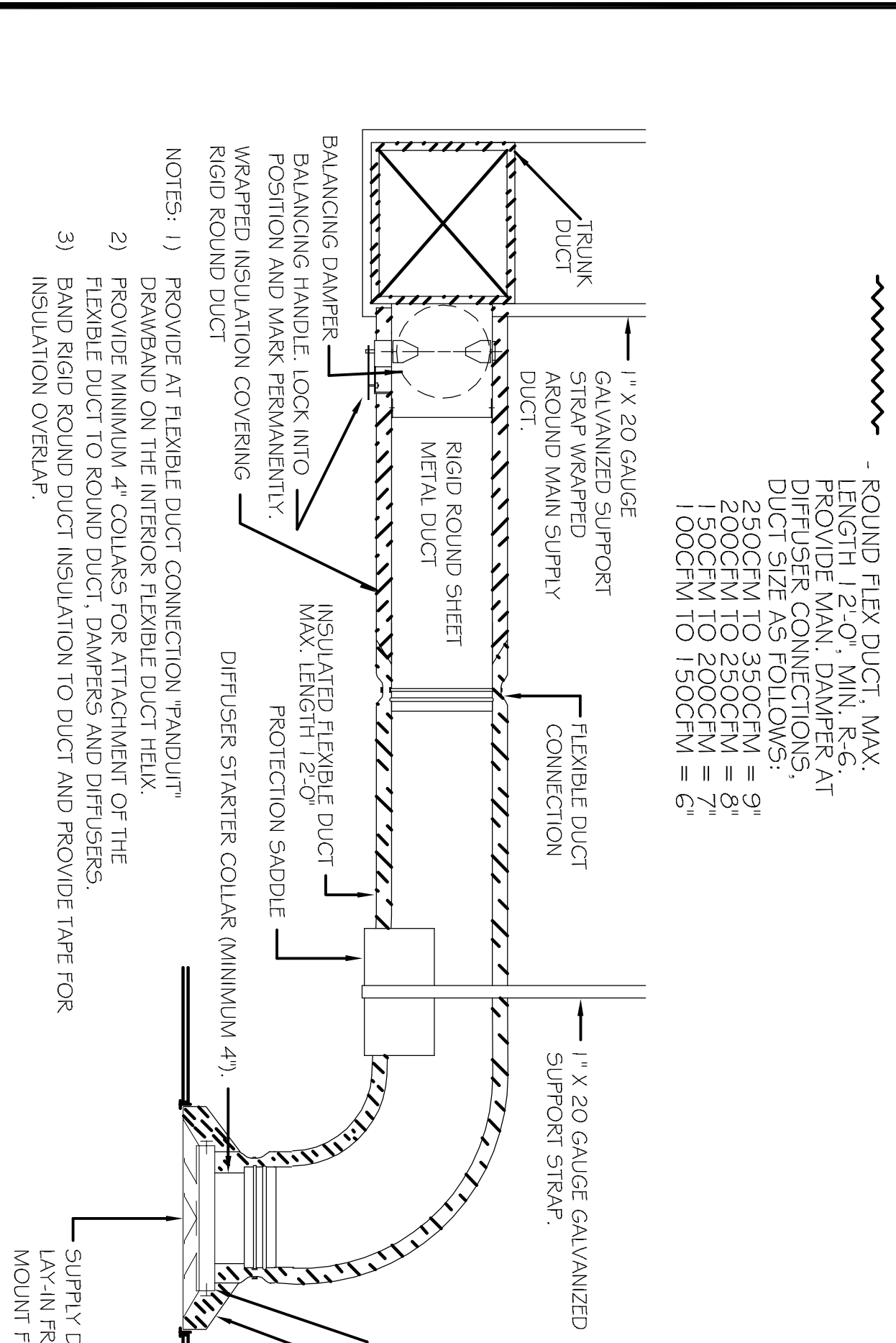
- CONTRACTOR SHALL VERIFY THAT ALL EQUIPMENT, AS SHOWN ON THESE DRAWINGS, WILL NOT CONFLICT WITH ANY DRAINS, SCUTTERS, JOISTS, ETC.
- ALL ROOF MOUNTED EQUIPMENT AND PENETRATIONS SHALL BE FLASHED A MINIMUM OF 12" ABOVE THE ROOF VIA ROOF CURBS AND PRE SEALS. PROVIDE WHITE SUPPLY OF PRE SEALS FOR ELECTRICAL PENETRATIONS.
- ALL OUTSIDE AIR INTAKES SHALL BE A MINIMUM OF 10'-0" FROM ANY EXHAUST FAN OR FLUING VENT. FRESH AIR SHALL BE FILTERED THROUGH EXTERIOR WALL DUCT SUPPLIED WITH A CONTROL DAMPER TO SHUT WHEN SYSTEM IS NOT RUNNING.
- MECHANICAL SPACES SHOWN ON THESE DRAWINGS ARE DRAWN DISCREETLY. CONTRACTOR TO VERIFY WITH DIFFUSER LOCATIONS AND COORDINATE AS REQUIRED.
- REFER TO STRUCTURAL DRAWINGS TO COORDINATE LOCATION(S) & MOUNTING OF MECHANICAL EQUIPMENT.
- THE MECHANICAL CONTRACTOR SHALL BE RESPONSIBLE FOR ADVISING ALL WARRANTIES ON EQUIPMENT WHICH HE INSTALLS. THIS INCLUDES ALL CONDENSERS, REFRIGERANT LINES, AND OTHER ITEMS FURNISHED BY OTHERS AS WELL AS THOSE FURNISHED BY HIM.
- CONDENSATE & OVERFLOW DRAIN LINES SHALL BE PVC 3/4" AND SHALL BE INSTALLED COMPLETELY SEPARATE TO SANITARY SEWER. DRAINS TO BE RUN TO FLUERS WITH PRETREATMENT OF AIR HANDLING UNITS.
- PROVIDE VIBRATION ISOLATION DEVICES AND FLEXIBLE CONNECTIONS TO ALL MOVING MACHINERY.
- DUCTWORK TO BE GALVANIZED SHEET METAL PER SMACK STANDARDS. LINE WITH REDDIPRE COATED 1.07, 1.5 POUNDS PER CUIC FOOT DUCT INSULATION.
- ROUND FLEXIBLE DUCT TO BE UL-181, CLASS I, AIR DUCT MATERIALS AND BE INSULATED WITH A MINIMUM R-VALUE OF 6.
- ALL DUCT DIMENSIONS SHOWN ON DRAWINGS ARE CLEAR INSIDE DIMENSIONS. DUCTS SHALL BE SIZED TO LIMIT MAIN DUCTS TO 1000 CFM & SECONDARY DUCTS TO 600 CFM.
- ALL SUPPLY AIR VENTS SHALL BE EQUIPPED WITH AIR CONTROL DAMPERS.
- THE CONTRACTOR SHALL PROVIDE COMPLETE INFORMATION AND COOPERATION TO THE OTHER CONTRACTORS AND PROVIDE AS REQUIRED FOR COMPLETION AND COORDINATION OF THE COMPLETE PROJECT.
- THIS CONTRACTOR SHALL COORDINATE WITH THE GENERAL CONTRACTOR AND ALL OTHER TRADES FOR ALL REQUIRED OPENINGS IN FOUNDATIONS, FLOORS, WALLS AND ROOF. CUTTING AND PATCHING SHALL BE HELD TO A MINIMUM.
- TEMP. SENSORS SHALL BE LOCATED GENERALLY AS SHOWN BUT THEIR EXACT LOCATION SHALL BE FIELD COORDINATED TO AVOID INTERFERENCE WITH WALL MOUNTED ITEMS. MOUNT SENSORS IN COMPLIANCE WITH ADA CODE SECTION 4.27. ALL THERMOSTATS SHALL BE COORDINATED WITH OWNER AT JOB SITE.
- ALL AIR HANDLING SYSTEMS TO BE BALANCED TO ASSURE PROPER AIR FLOWS PER PLANS.
- ALL AIR HANDLING SYSTEMS TO BE BALANCED TO ASSURE PROPER AIR FLOWS PER PLANS.
- CONTRACTOR TO INSULATE BACKSIDE OF ALL DIFFUSERS WITH 2" MINIMUM OWENS-CORNING FIBERGLASS ALL SERVICE FACED DUCT WEAIR.
- CONTRACTOR TO COORDINATE ALL DUCTWORK TRANSITIONS AS REQUIRED TO ATTACH DUCTWORK TO HVAC EQUIPMENT AND AIR DEVICES.
- ALL ROUND DUCT AND FLEX DUCT RUN CUTS SHALL BE THE SAME DIAMETER AS DIFFUSER UNLESS NOTED OTHERWISE.
- PROVIDE RECTANGULAR TO ROUND TRANSITIONS FOR ALL DIFFUSERS AS NEEDED.
- VERIFY EXISTING CONDITIONS IN FIELD PRIOR TO BEGINNING WORK.
- PROVIDE AND INSTALL WATER PROOF GRILLE VENT IN PROPER ROOF LOCATION FOR PLUMBING FIXTURE EXHAUST.
- COORDINATE CEILING AIR DEVICE LOCATIONS WITH LIGHTING PLAN AND ARCHITECT'S REFLECTED CEILING PLAN.
- RETURN DUCTWORK SHALL BE LINED WITH 1-INCH ACOUSTICAL INSULATION.
- IN ALL SYSTEMS OVER 2,000 CFM AND LESS THAN 15,000 CFM, SMOKE DETECTORS SHALL BE INSTALLED IN THE RETURN AIR SYSTEM. DETECTORS SHALL BE INSTALLED IN THE RETURN AIR SYSTEM UNDER 2,000 CFM. PROVIDE U.L. LISTED 125°F FRESH-AIR RETURN AIR OF EACH SYSTEM TO SHUT DOWN FAN IN THE EVENT OF FIRE.
- PROVIDE AND INSTALL SMOKE DETECTORS, AS APPROVED BY LOCAL AHS, PLACE NEAR RA AND SA OPENINGS OF AHU AND PROVIDE WITH ACCESS PANEL, WIRING BY ELECTRICAL CONTRACTOR.
- PROVIDE U.L. LISTED PRE DRYERS WHERE REQUIRED AT ALL DUCT PENETRATIONS OF FIRE RATED ASSEMBLIES AND WHERE REQUIRED BY CODE, INCLUDING OUTSIDE AIR INTAKES.
- PROVIDE AND INSTALL WATER PROOF GRILLE VENT ON ROOF FOR TOILET EXHAUST.
- REFRIGERANT LINES SHALL BE SIZED BY UNIT MANUFACTURER AND INSTALLED ACCORDING TO MANUFACTURERS INSTRUCTIONS.
- INSTALL FIRE DAMPER WHERE 5 A. AND R A. DUCTS PENETRATE 1 HR. CONSTRUCTION.
- ALL ELECTRICAL, MECHANICAL AND PLUMBING PENETRATING FIRE PARTITIONS SHALL BE FIRE CAULKED. PENETRATIONS THROUGH RATED CONSTRUCTION SHALL BE SEALED WITH A MATERIAL CAPABLE OF PREVENTING THE PASSAGE OF FLAMES AND HOT GASES WHEN TESTED IN ACCORDANCE WITH ASTM E814.



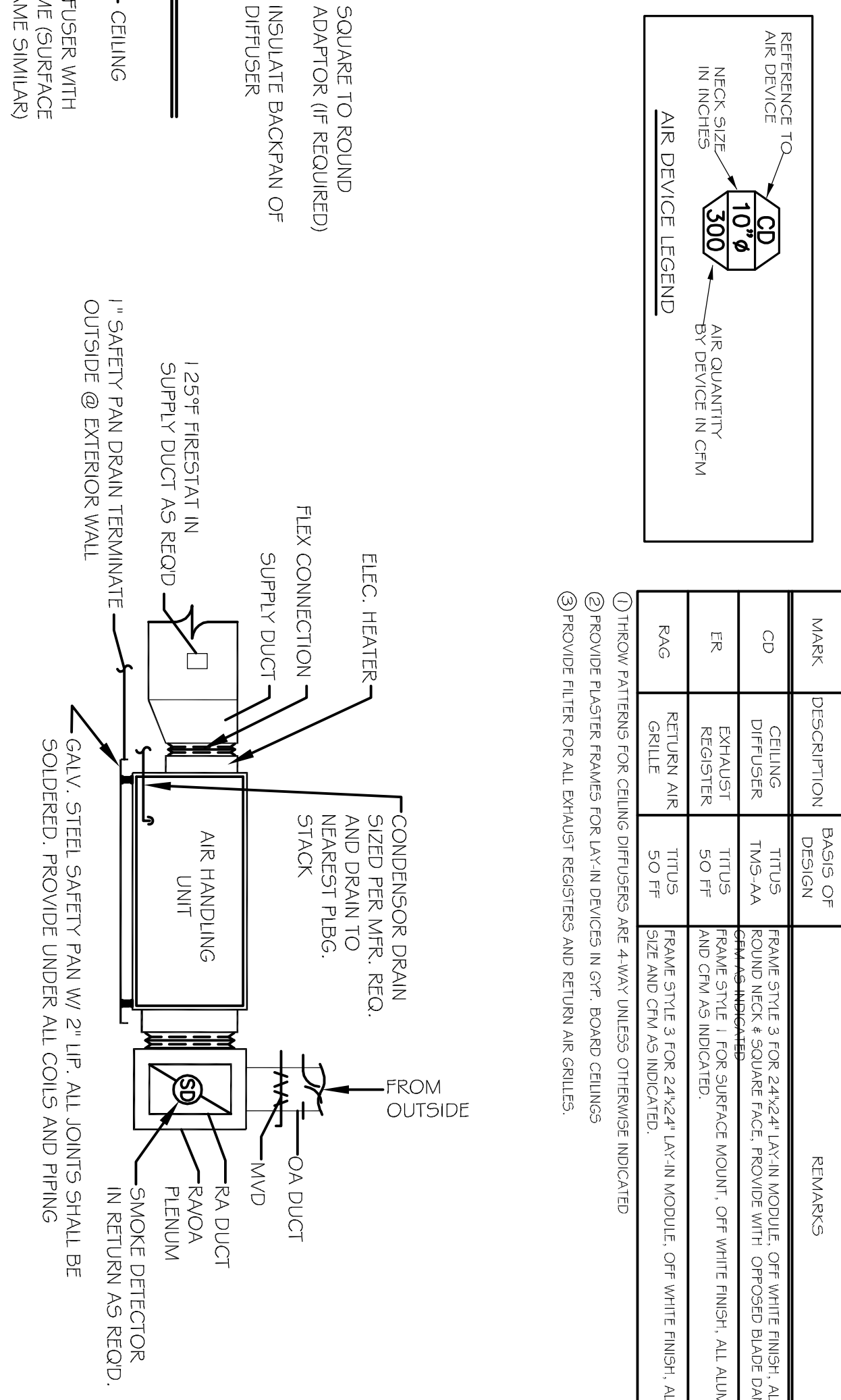
MECHANICAL PLAN
SCALE: 1/4" = 1'-0"

MARK	DESCRIPTION	BASIS OF DESIGN	REMARKS
CD	CEILING DIFFUSER	TITUS	ROUND NECK & SQUARE FACE. PROVIDE WITH OFFSHOUL DUCT DAMPER. NECK SIZE AND ER REGISTER 50 FF AND CFM AS INDICATED.
ER	EXHAUST REGISTER	TITUS	ROUND NECK & SQUARE FACE. PROVIDE WITH OFFSHOUL DUCT DAMPER. NECK SIZE AND CFM AS INDICATED.
RA	RETURN AIR REGISTER	TITUS	ROUND NECK & SQUARE FACE. PROVIDE WITH OFFSHOUL DUCT DAMPER. NECK SIZE AND CFM AS INDICATED.
RD	RETURN AIR REGISTER	TITUS	ROUND NECK & SQUARE FACE. PROVIDE WITH OFFSHOUL DUCT DAMPER. NECK SIZE AND CFM AS INDICATED.
GR	GRILLE	TITUS	ROUND NECK & SQUARE FACE. PROVIDE WITH OFFSHOUL DUCT DAMPER. NECK SIZE AND CFM AS INDICATED.

- THESE PATTERNS FOR CEILING DIFFUSERS ARE 4' X 4' UNLESS OTHERWISE INDICATED.
- PROVIDE PASTER FRAMES FOR LAVIN DRIVES IN GYM. ROUND GRILLES
- PROVIDE FILTER FOR ALL EXHAUST REGISTERS AND RETURN AIR GRILLES.



DIFFUSER CONNECTION DETAIL-FLEX DUCT
SCALE: N.T.S.



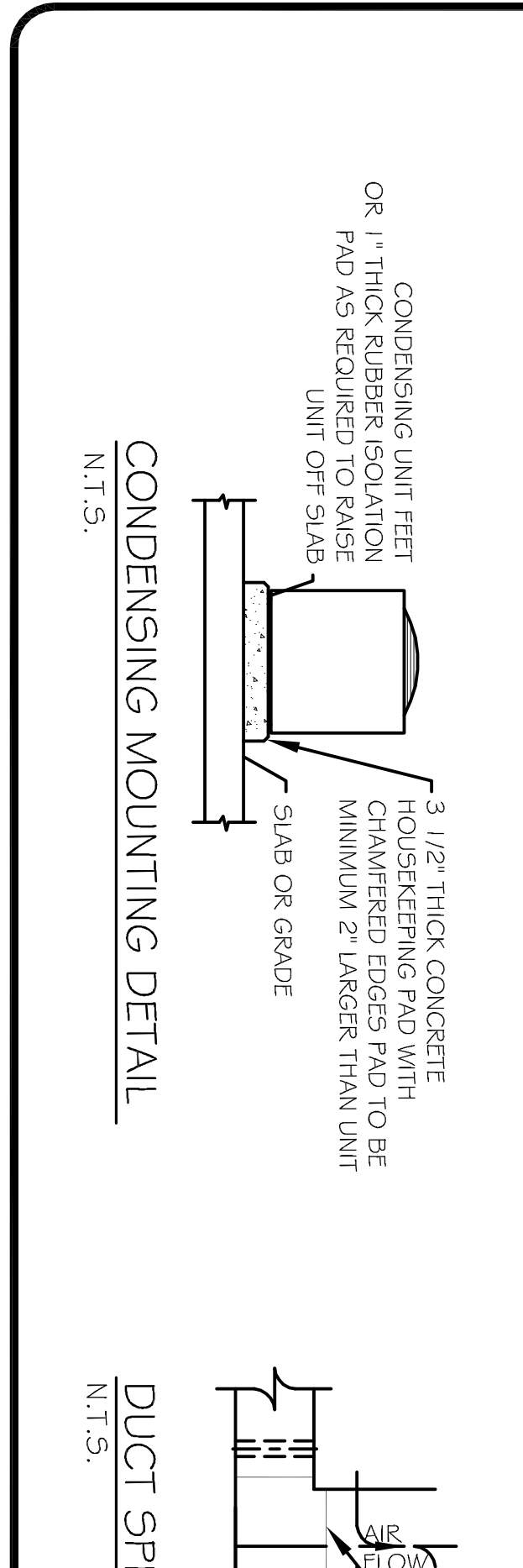
TYPICAL HORIZONTAL AHU DETAIL
SCALE: N.T.S.

MARK	AREA SERVED	CFM	T.S.P. IN WG	MOTOR DATA HP RPM V/PH/Hz	CONTROLLED BY	BASIS OF DESIGN	REMARKS
EF-1	AUDITORIUM	600	0.25	1/10 1550 120/1/60	AHU	RAE RAN 100	①②③

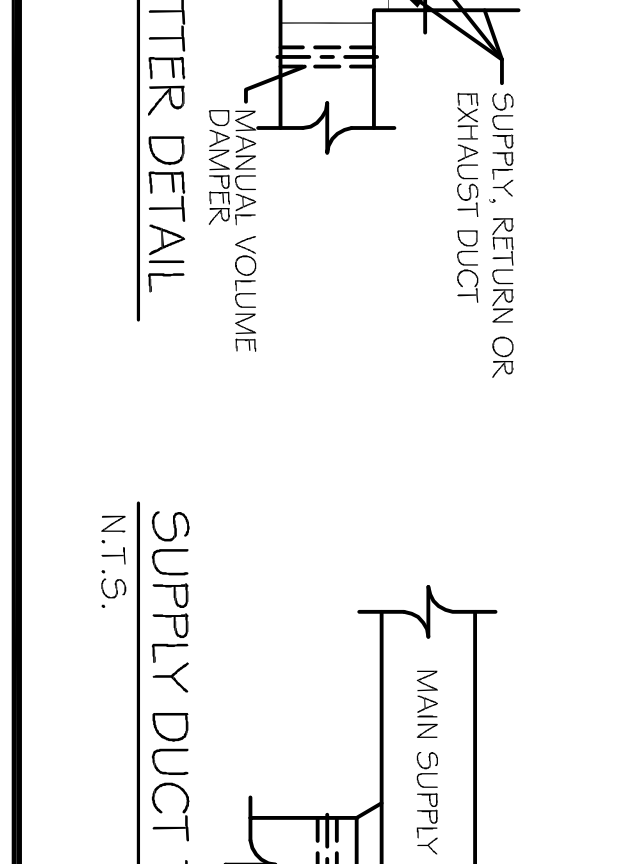
AIR BALANCE SCHEDULE	
MARK	CFM
OUTSIDE AIR FLOW (CFM)	1182
RETURN AIR FLOW (CFM)	491.0
SUPPLY AIR FLOW (CFM)	6000
EXHAUST AIR FLOW (CFM)	550
BUILDING PRESSURE (CFM)	1182
QUANTITIES	1
TOTAL PRESSURIZATIONS	1182
RESULTING BUILDING PRESSURIZATION (CFM) +23"	1182

AHU UNIT SCHEDULE							
TOTAL BTU	CFM	O.A.	HEAT (KW)	VOLTAGE (V)	WICK	CCT BIKES	COMMENTS
1,80,000 BTU (15 TON)	6,000	1182	29.92	240V/3Ø	101.5	FG-2,4,6	NOTE: ALL AC TO BE SHUT-NEW AHU #1

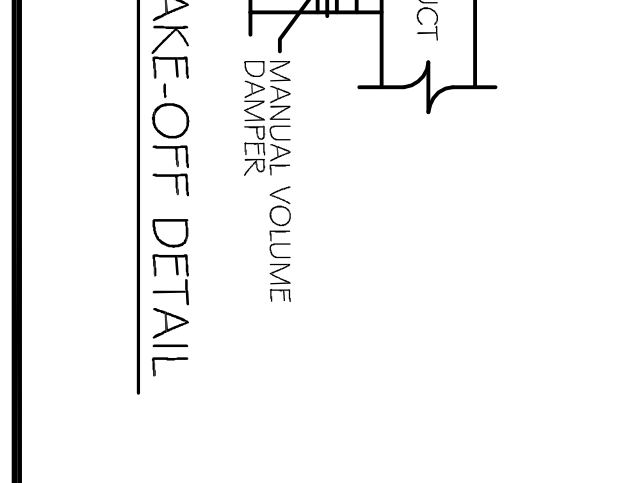
FAN SCHEDULE							
MARK	AREA SERVED	CFM	T.S.P. IN WG	MOTOR DATA HP RPM V/PH/Hz	CONTROLLED BY	BASIS OF DESIGN	REMARKS
EF-1	AUDITORIUM	600	0.25	1/10 1550 120/1/60	AHU	RAE RAN 100	①②③



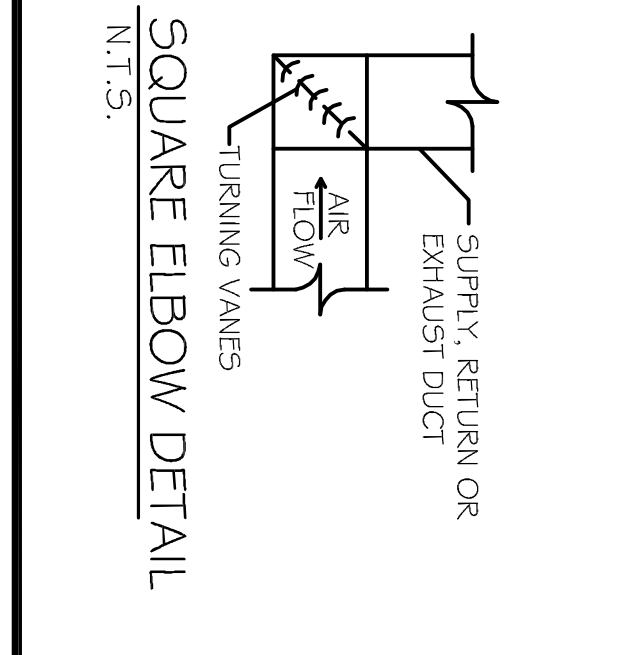
CONDENSING UNIT FEET OR 1 1/2 THICK RUBBER ISOLATION PAD AS REQUIRED TO BASE UNIT OFF SLAB
CONDENSING UNIT FEET OR 1 1/2 THICK CONCRETE HOUSING PAD WITH CHAMFERED EDGES PAD TO BE MINIMUM 2" LARGER THAN UNIT



DUCT SPLITTER DETAIL
SCALE: N.T.S.



SUPPLY DUCT TAKE-OFF DETAIL
SCALE: N.T.S.



SQUARE ELBOW DETAIL
SCALE: N.T.S.

In joint ventures with:

DAMMON ENGINEERING, INC.

Architects & Engineers

Chief Architect: Kevin J. Koenen, NCARB
Chief Engineer: Brian Mesch, PE
www.dammonengineering.com
dammoneng@aol.com
Slidell, LA 70458
Ph: 983.641.9950

DRAWN	J.T.L.
CHECKED	DATE
6/8/14	SCALE
NOTED	JOB NO.
SHEET	M-1
OF	9-SHEETS

Slidell Little Theatre

2024 Nellie Drive
Slidell, Louisiana 70458

FRANK E. GERARVE, JR., ARCHITECT, L.L.C.

A Professional Architectural Limited Liability Company
Designers Planners Engineers

9108 CHRETIEN POINT PLACE,
Telephone: (504) 737-2821

RIVER RIDGE, LOUISIANA 70123
Facsimile: (504) 737-2822

REVISIONS BY

These documents are and shall remain the property of the architect and shall not be used for any other project without the written consent of the architect. The removal of the architect's seal or stamp from these documents unless otherwise provided by written approval of the architect shall be a violation of the AIA Code of Ethics. These documents shall be subject to the penalties, fines and/or imprisonment as stated by Louisiana Law.