

Sponsored by the ATC Endowment Fund • [Applied Technology Council](#) • 201 Redwood Shores Parkway, Suite 240 • Redwood City, California 94065 • (650) 595-1542

### Chlorine Contact Time

Tank Volume: 120 gallons      90 gallons useful liquid storage

Southern Comfort Lounge :      40 seats \* 25 gallons per seat =      1000 gallons/day

Tattoo Parlor                    :      2 Employees \* 20 gal/day/emp =      40 gallons/day

Used Tire Store                :      2 Employees \* 20 gal/day/emp =      40 gallons/day

Total                                :    1080 gallons/day

12 hour operation                =      1.5 gallons usage per minute

1.5 gal/minute \* 30 minutes = 45 gallons of storage for 30 minute contact time (required)

90 Gallons of storage will exceed the 30 minute contact time required.

AS a group

Bob 30" - 625 - 0 -  
36" 375 - 0 -

Require

All three businesses together ~~have the potential~~ of requiring registration on the drinking water inventory. The proposal in this submittal is to modernize the water system for the 3 customers. This shall be done by:

- 1) Removing the water pump, controls, disinfection facility, and storage tank from the Southern Comfort Pump House.
- 2) Removing the demand pumps, controls, and storage facilities from the Used Tire Store and Tatoo Parlor.
- 3) Constructing a well house at the well head site.
- 4) Installing a water pump, disinfection facility, a 120 Gallon hydropneumatic storage tank (to meet the 30 minute contact time requirement) controls and associated water system appurtenances at the well site.
- 5) Replacing all 4" sewer piping within a 50' radius of the well with schedule 40 PVC in accord with LSSC XII 327 - A - 2 - Footnote 1.

6) Install backflow preventors at each business

In essence, the water system shall be centralized at the well head and the distribution shall supply water to the three businesses. Each business shall be outfitted with approved sampling taps.

The attached submittal contains:

- 1) A complete application package is submitted for your review.
- 2) A diagram indicating the current layout including possible sources of contamination.
- 3) A diagram indicating the proposed reconfiguration and modernization plan
- 4) A product sheet for the Flowtec Model FP7250 Hydropneumatic Tank is provided. The specifications sheet does not specifically designate ASME code requirement construction; however, this type of tank is designed for potable water systems and used in many systems.
- 5) Bypass piping for the Hydropneumatic Tank shall be installed. (see system diagram)
- 6) As this is an extremely small water supply, the Hydropneumatic Tank will not have automatic controls to maintain water-to-air ratio. The air shall be manually injected using an access valve to be installed on the air tank.
- 7) See attached calculation sheet for chlorine contact time.
- 8) The MSDA sheets for AquaChlor 12.5% are provided in the submittal.
- 9) Sodium Hypochlorite shall be stored in the pump house.
- 10) Secondary containment for the chlorine supply tank shall be provided.
- 11) The certified operator shall take the chlorine residuals.
- 12) The water system shall be disinfected in accord with LAC 51, Part XII, 351 and tested in accord with LAC 51, Part XII, 353.

FP 7250

The Chlorine injection point shall be after the check valve but before the storage tank. Respectfully,

Brian A. Mistich, P.E.

Dammon Engineering

554 Old Spanish Trail

Slidell, LA 70458

985-649-5832



SEARCH

Products Resource Center About Where to Buy

FP7230-08

Home / Flotec Products / FP7230-08

Bob Pearson  
601 209 4677  
Monica 504 461 3795

Print



Model FP7230

Air-Over-Water Pressure Tank (Tall, Vertical) - 42 Gallons

Epoxy-lined standard water tanks are excellent corrosion resistant tanks for home water systems applications such as retention tank, holding tank and pressure tank.

KEY FEATURES

- Replaces any standard galvanized, glass-lined or epoxy-lined tank
- Precision press fit design minimizes gaps between components, reducing the possibility of corrosion and seam leaks.
- Tough polyester exterior paint.
- Air volume control tap standard on all sizes

WARRANTY

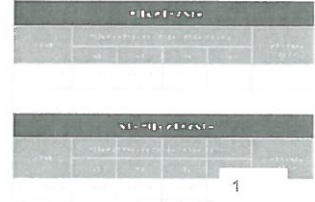
1 year limited warranty

SPECIFICATIONS

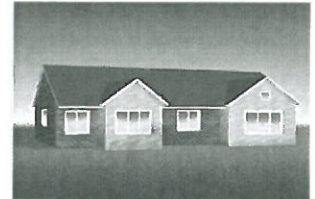
RESOURCES

- BODY CONSTRUCTION:** Heavy Gauge Steel
- BODY FINISH:** Electrostatically Applied Baked On Polyester
- STYLE:** Vertical Upright
- TANK CAPACITY:** 42 gal
- TANK DIAMETER:** 16"
- TANK HEIGHT:** 53-1/2"
- PIPE TAP SIZE:** 1-1/4" NPT

Performance



Interactive Guide

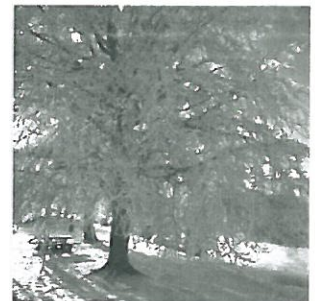


VIRTUAL HOUSE

Use our interactive water solutions guide to find products for all your home waterflow needs. Take the tour to see how our products work throughout your home.

LAUNCH

Winterizing Your Pump



Learn helpful tips to keep your pump performing properly throughout the winter months

GET TIPS

Contact Us

