

FIRST FLOOR LEASING OFFICE HVAC PLAN
SCALE: 1/4" = 1'-0"

MECHANICAL SPECIFICATIONS 3 TON HEAT PUMP	
EQUIPMENT SELECTIONS	
INDOOR HEAT PUMP	ADP BU3610
AIR FLOW	1200 CFM
ELECTRICAL SPECIFICATIONS	240V-1Ø
UNIT M.C.A. (INCLUDING HEAT)	60.0 AMPS
REV. CYCLE HEAT CAPACITY	34120 BTUH
AUX. HEAT CAPACITY	10.0 KW (41.6A)
OUTDOOR HEAT PUMP	
DUCCANE HP10B36	
ELECTRICAL SPECIFICATIONS	240V-1Ø
UNIT M.C.A.	23.9 MCA
COOLING CAPACITY	34,400 BTUH S.E.E.R. 10.0

MECHANICAL SPECIFICATIONS 4 TON HEAT PUMP	
EQUIPMENT SELECTIONS	
INDOOR HEAT PUMP	DUCCANE DBP48CA
AIR FLOW	1600 CFM
ELECTRICAL SPECIFICATIONS	240V-1Ø
UNIT M.C.A. (INCLUDING HEAT)	60.0 AMPS
REV. CYCLE HEAT CAPACITY	47,000 BTUH
AUX. HEAT CAPACITY	10.0 KW
OUTDOOR HEAT PUMP	
DUCCANE HP10B48	
ELECTRICAL SPECIFICATIONS	240V-1Ø
UNIT M.C.A.	32.2 MCA
COOLING CAPACITY	45,500 BTUH S.E.E.R. 10.0

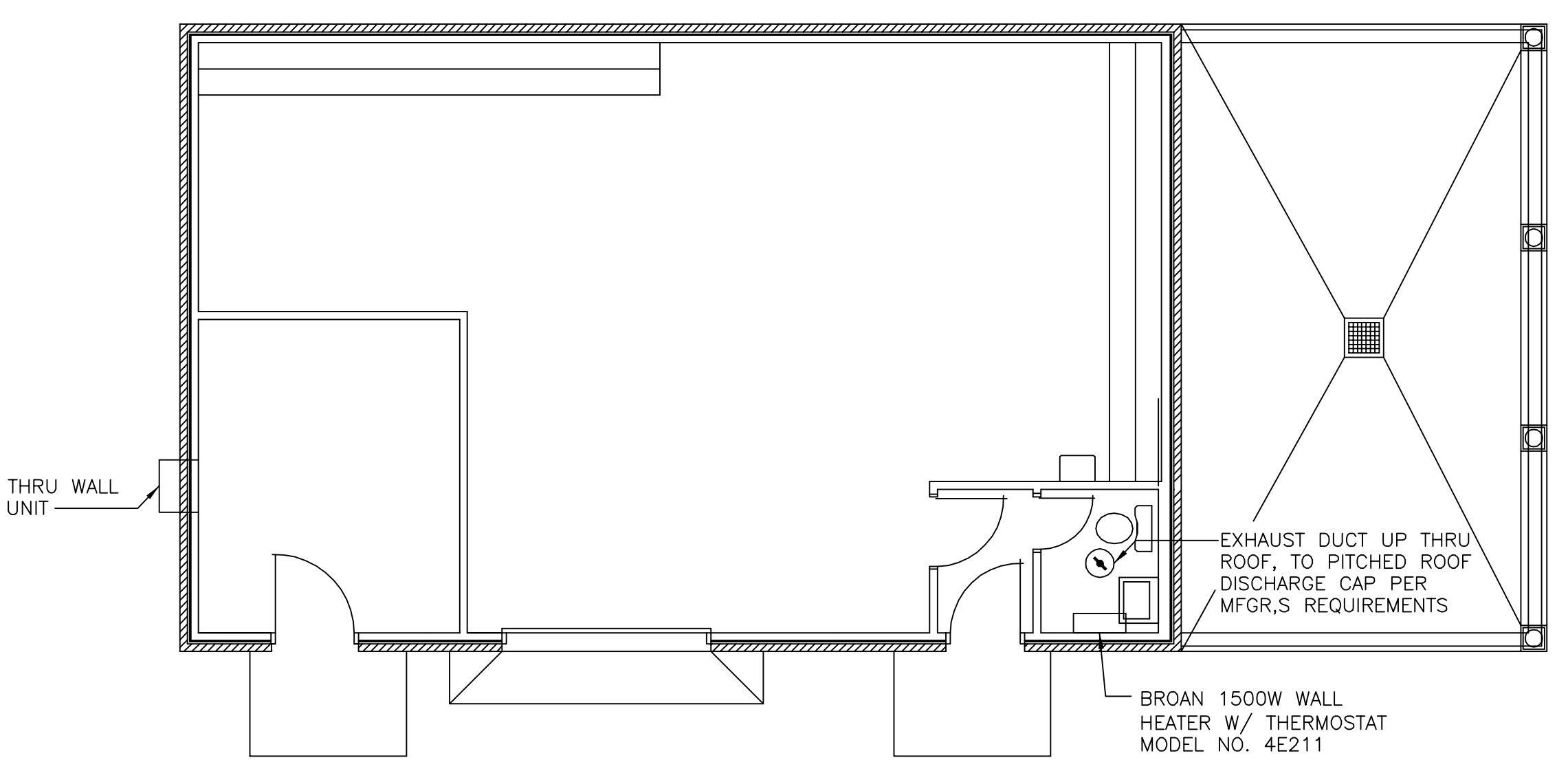
MECHANICAL EQUIPMENT SCHEDULE	
WALL MOUNTED HEATER:	NUTONE MODEL 9315T, 750W W/ADJUSTABLE CONTROL, MOUNT 6'-0" A.F.F.
VENTILATION FAN:	NUTONE MODEL 8870 W/VS-69 COMBINATION TIMER/ON/OFF SWITCH, BACK DRAFT DAMPER & WEATHER AND INSECT PROOF CAP. FIELD VERIFY.

NOTES

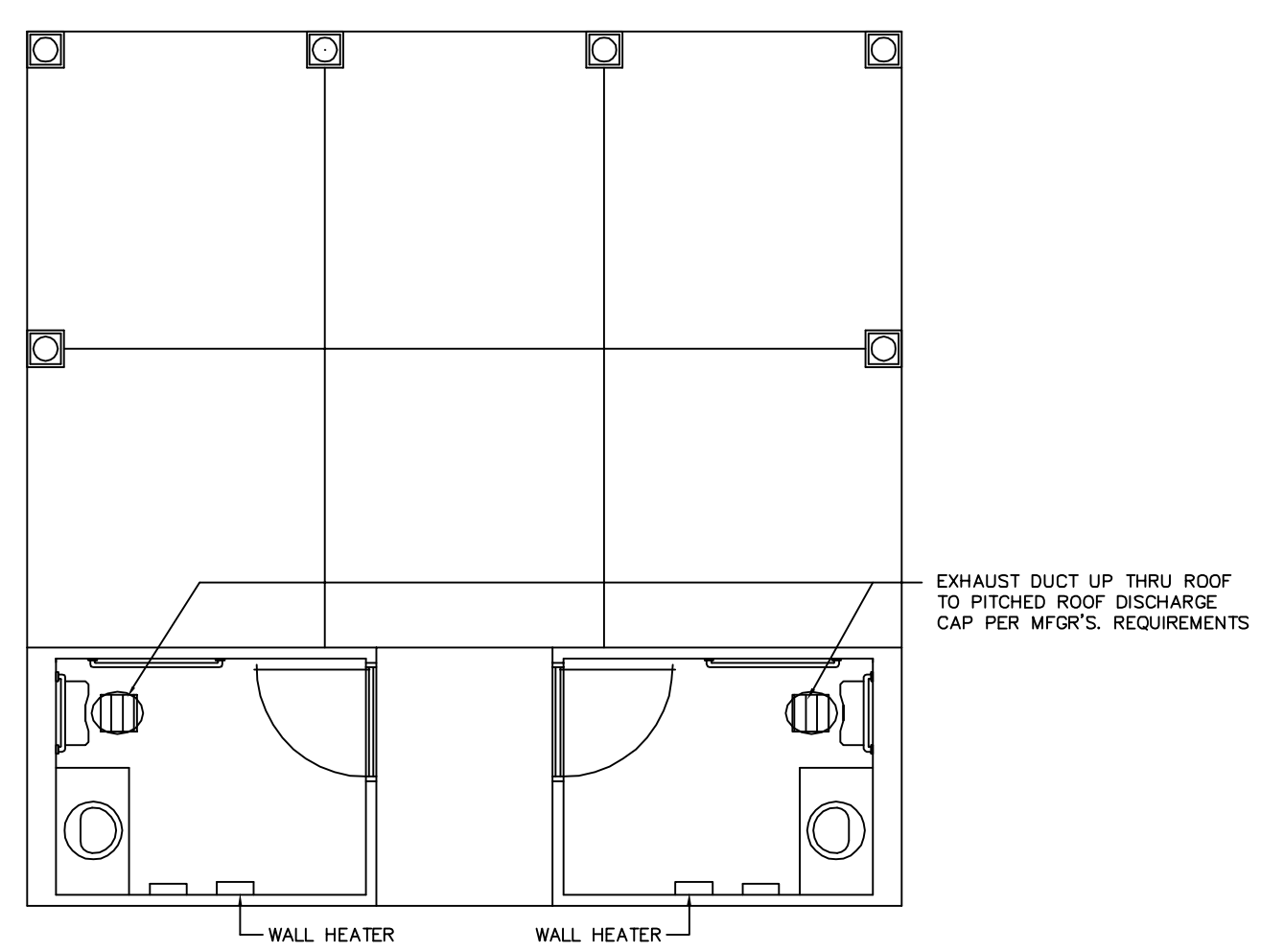
- EXHAUST FAN EQUAL TO BROAN MODEL NO. L100 100 CFM OR EQUAL. FAN SHALL BE CONTROLLED BY SWITCH ON WALL AT LIGHT SWITCH. PROVIDE BACK DRAFT DAMPER AND FIRE DAMPER.
- PROVIDE AND INSTALL WATER PROOF GRILLE IN OUTSIDE WALL FOR TOILET EXHAUST.
- DRYER DISCHARGE GRILLE PER MFG.'S REQUIREMENTS. BACK DRAFT DAMPER MUST BE WEATHER AND INSECT PROOF.
- EXHAUST DISCHARGE GRILLE PER MFG.'S REQUIREMENTS.
- ALL SIZES SHOWN FOR DUCTWORK IS CLEAR INSIDE DIMENSIONS
- ROUND FLEXIBLE DUCT TO BE UL-181, CLASS I, AIR DUCT MATERIAL.
- PROVIDE U.L. LISTED 1250°F FIRESTAT IN RETURN AIR OF EACH SYSTEM UNDER 2000 CFM TO SHUT DOWN FAN IN THE EVENT OF A FIRE.
- ALL SUPPLY AIR VENTS SHALL BE EQUIPPED WITH FIRE DAMPERS (CONNECTED TO THE BUILDING FIRE ALARM SYSTEM) AND AIR CONTROL DAMPERS.
- ALL AIR HANDLING SYSTEMS SHALL BE BALANCED TO ASSURE PROPER AIR FLOWS PER PLAN.
- ALL THERMOSTATS TO BE AUTOMATIC CHANGEOVER WITH HEAT-OFF-COOL SWITCH
- LOCATION OF OUTDOOR UNITS AS PER ARCHITECTS RECOMMENDATION. MECHANICAL CONTRACTOR SHALL PROVIDE A 4" CONCRETE REINFORCED PAD FOR EACH CONDENSING UNIT.
- REFRIGERANT LINES SHALL BE SIZED BY UNIT MANUFACTURER AND INSTALLED ACCORDING TO INSTRUCTIONS.
- THE HVAC SYSTEM SHALL BE CONSTRUCTED IN ACCORDANCE WITH NFPA 101(1997), SECTION 7-2.

LEGEND

- SUPPLY AIR VENT
- ↘ FIRE DAMPER
- BATHROOM EXHAUST
- ⊕ THERMOSTAT



MAINTENANCE BUILDING HVAC PLAN
SCALE: 1/4" = 1'-0"

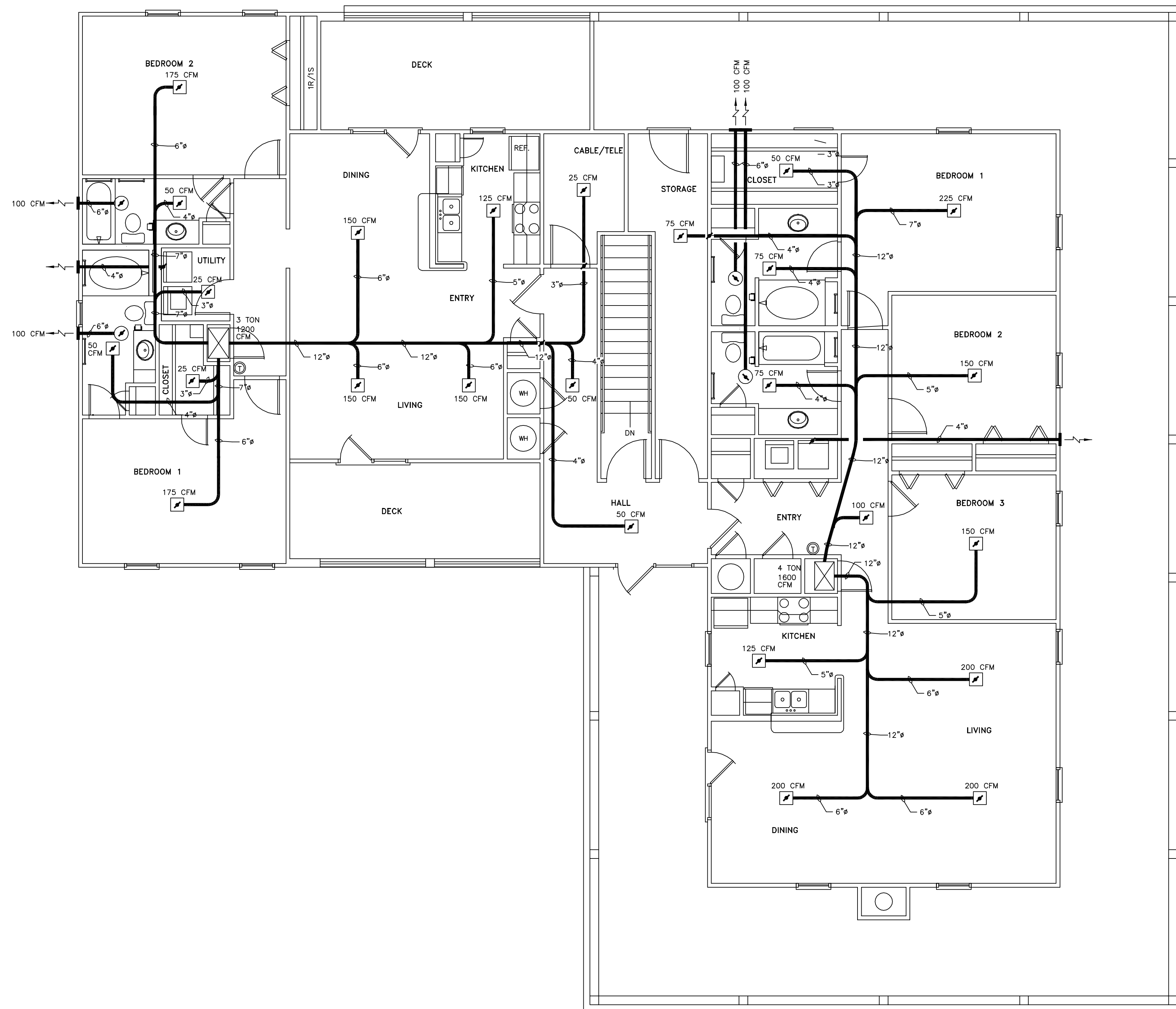


GAZEBO BUILDING HVAC PLAN
SCALE: 1/4" = 1'-0"

THE BRYAN COMPANY
ISLAND PARK
APARTMENT COMMUNITY
SHREVEPORT, LA.

ISLAND PARK
DAMMON ENGINEERING INC.
ARCHITECTS - ENGINEERS
819 ROBERT ROAD
SLIDELL, LA. 70458

SCALE: AS NOTED
FILE: --
JOB No.: --
DATE: 03-29-04
SHEET
M-1
OF --



- LEGEND**
- SUPPLY AIR VENT
 - ▤ FIRE DAMPER
 - BATHROOM EXHAUST
 - ⊕ THERMOSTAT

MECHANICAL SPECIFICATIONS
3 TON HEAT PUMP

EQUIPMENT SELECTIONS

INDOOR HEAT PUMP _____ ADP_BU3610 _____

AIR FLOW _____ 1200 CFM _____

ELECTRICAL SPECIFICATIONS _____ 240V-1ϕ _____

UNIT M.C.A. (INCLUDING HEAT) _____ 60.0 AMPS _____

REV. CYCLE HEAT CAPACITY _____ 34120 BTUH _____

AUX.HEAT CAPACITY _____ 10.0 KW (41.6A) _____

OUTDOOR HEAT PUMP _____ DUCANE HP10B36 _____

ELECTRICAL SPECIFICATIONS _____ 240V-1ϕ _____

UNIT M.C.A. _____ 23.9 MCA _____

COOLING CAPACITY _____ 34,400 BTUH _____ S.E.E.R. 10.0 _____

MECHANICAL SPECIFICATIONS
4 TON HEAT PUMP

EQUIPMENT SELECTIONS

INDOOR HEAT PUMP _____ DUCANE DBP48CA _____

AIR FLOW _____ 1600 CFM _____

ELECTRICAL SPECIFICATIONS _____ 240V-1ϕ _____

UNIT M.C.A. (INCLUDING HEAT) _____ 60.0 AMPS _____

REV. CYCLE HEAT CAPACITY _____ 47,000 BTUH _____

AUX.HEAT CAPACITY _____ 10.0 KW _____

OUTDOOR HEAT PUMP _____ DUCANE HP10B48 _____

ELECTRICAL SPECIFICATIONS _____ 240V-1ϕ _____

UNIT M.C.A. _____ 32.2 MCA _____

COOLING CAPACITY _____ 45,500 BTUH _____ S.E.E.R. 10.0 _____

SECOND FLOOR LEASING OFFICE HVAC PLAN
SCALE: 1/4" = 1'-0"

THE BRYAN COMPANY
ISLAND PARK
APARTMENT COMMUNITY
SHREVEPORT, LA.

ISLAND PARK
DAMMON ENGINEERING, INC.
ARCHITECTS - ENGINEERS
819 ROBERT ROAD
SLIDELL, LA. 70458

SCALE: AS NOTED

FILE: -

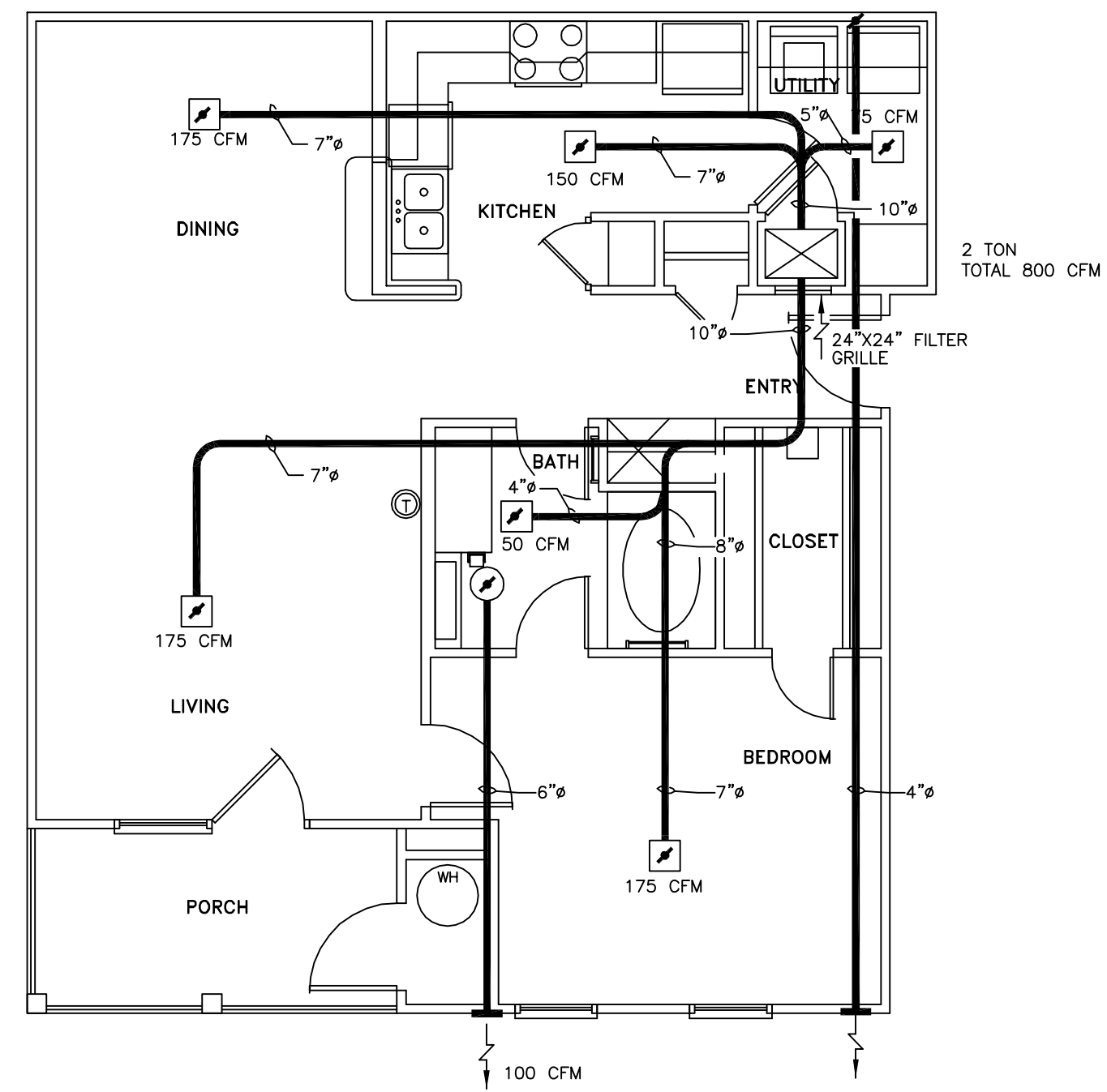
JOB No.: -

DATE: 03-29-04

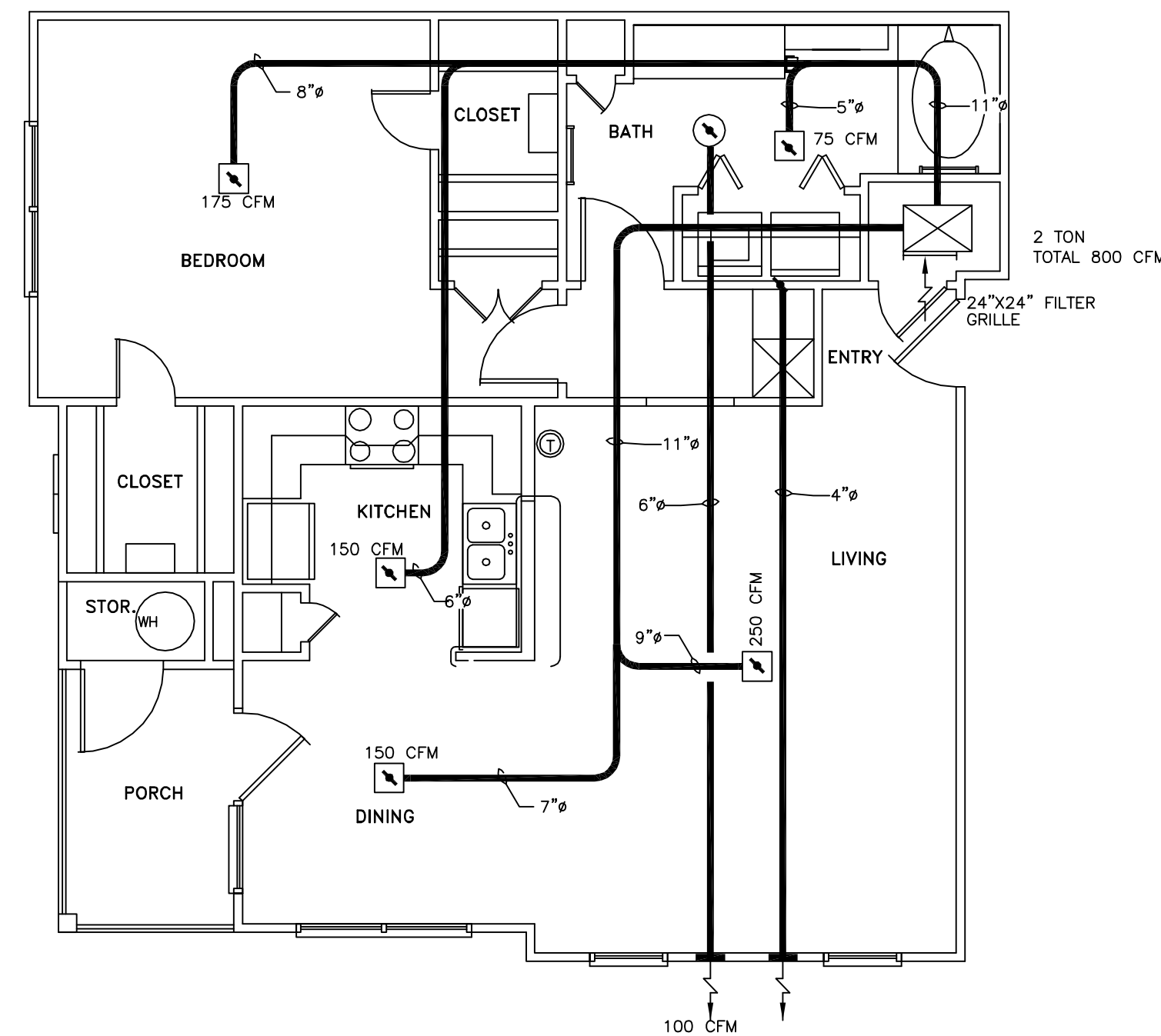
SHEET

M-2

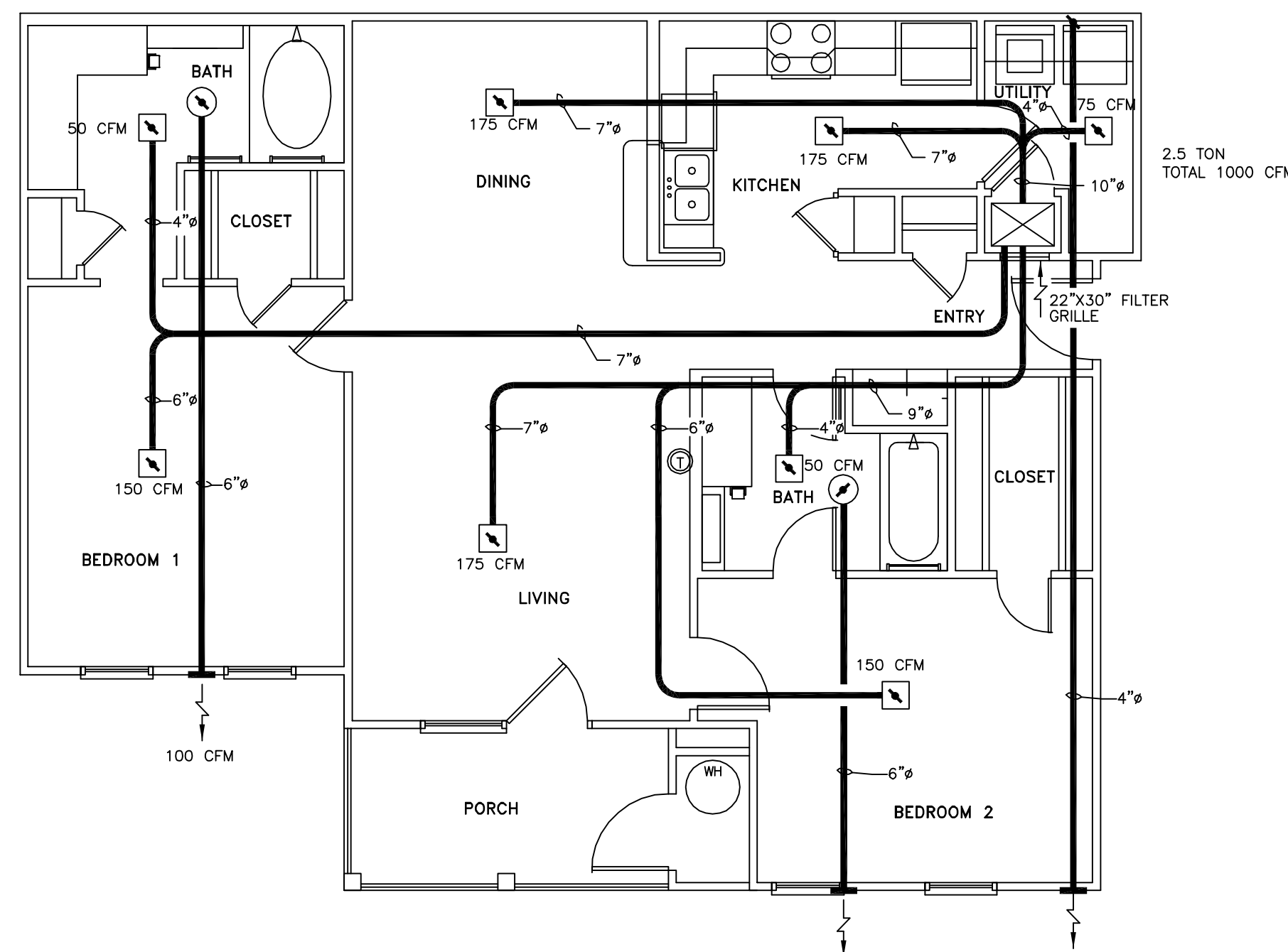
OF -



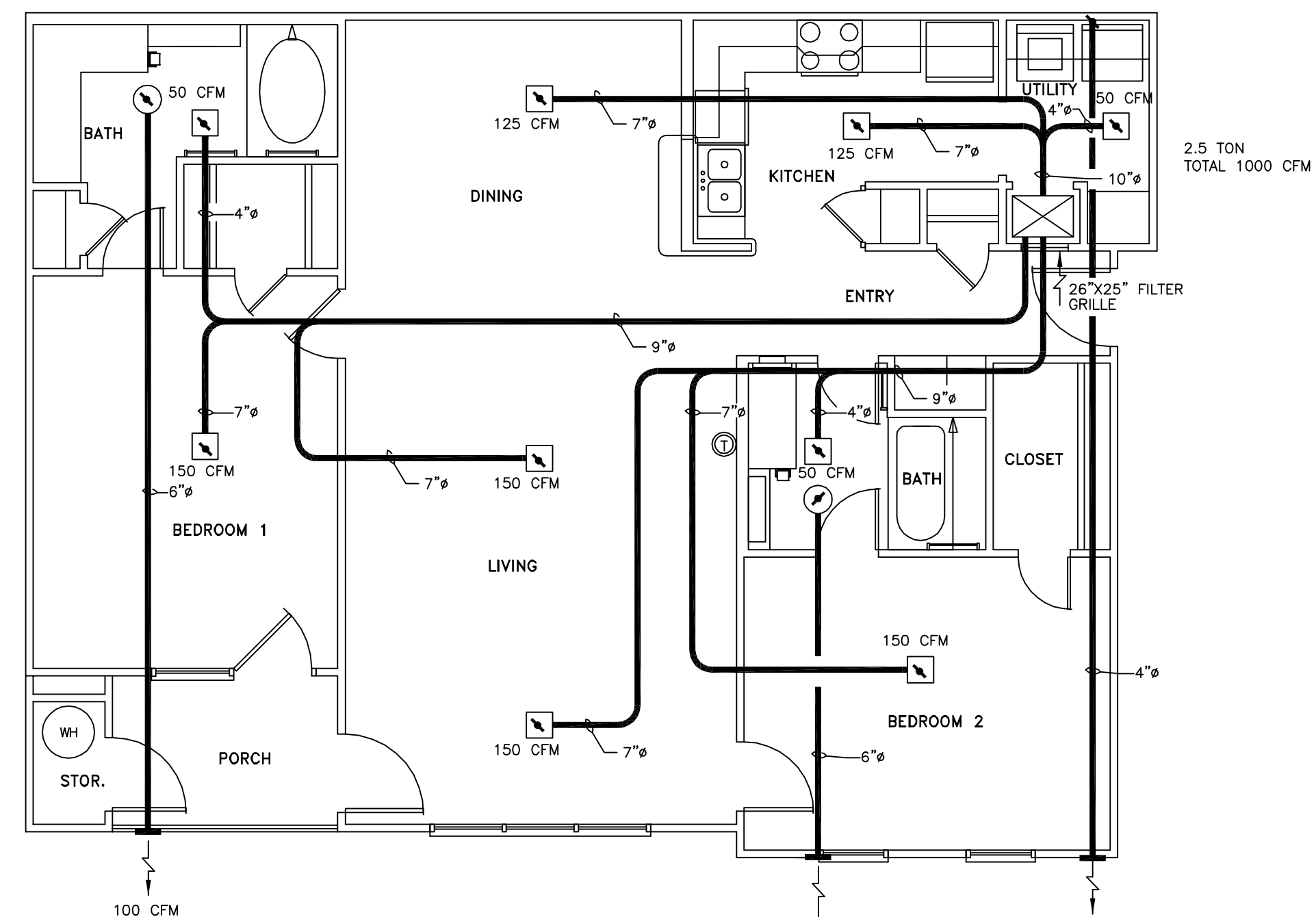
HVAC PLAN UNIT 1A
SCALE: 1/4" = 1'-0"



HVAC PLAN UNIT 1B
SCALE: 1/4" = 1'-0"



HVAC PLAN UNIT 2A
SCALE: 1/4" = 1'-0"



HVAC PLAN UNIT 2B
SCALE: 1/4" = 1'-0"

LEGEND

- SUPPLY AIR VENT
- ↘ FIRE DAMPER
- BATHROOM EXHAUST
- ⊕ THERMOSTAT

MECHANICAL SPECIFICATIONS
2 TON HEAT PUMP

EQUIPMENT SELECTIONS

INDOOR HEAT PUMP	ADP_BU24210
AIR FLOW	800 CFM
ELECTRICAL SPECIFICATIONS	240V-1ϕ
UNIT M.C.A. (INCLUDING HEAT)	55.0 AMPS
REV. CYCLE HEAT CAPACITY	34120 BTUH
AUX. HEAT CAPACITY	10.0 KW (41.6A)
OUTDOOR HEAT PUMP	DUCANE_HP10B24
ELECTRICAL SPECIFICATIONS	240V-1ϕ
UNIT M.C.A.	16.3 MCA
COOLING CAPACITY	24,000 BTUH S.E.E.R. 10.0

MECHANICAL SPECIFICATIONS
2.5 TON HEAT PUMP

EQUIPMENT SELECTIONS

INDOOR HEAT PUMP	ADP_BU30210
AIR FLOW	1000 CFM
ELECTRICAL SPECIFICATIONS	240V-1ϕ
UNIT M.C.A. (INCLUDING HEAT)	56.0 AMPS
REV. CYCLE HEAT CAPACITY	34120 BTUH
AUX. HEAT CAPACITY	10.0 KW (41.6A)
OUTDOOR HEAT PUMP	DUCANE_HP10B30
ELECTRICAL SPECIFICATIONS	240V-1ϕ
UNIT M.C.A.	21.4 MCA
COOLING CAPACITY	30,000 BTUH S.E.E.R. 10.0

THE BRYAN COMPANY

ISLAND PARK
APARTMENT COMMUNITY
SHREVEPORT, LA.

ISLAND PARK

DAMMON ENGINEERING, INC.
ARCHITECTS - ENGINEERS
819 ROBERT ROAD
SLIDELL, LA. 70458

SCALE: AS NOTED

FILE: -

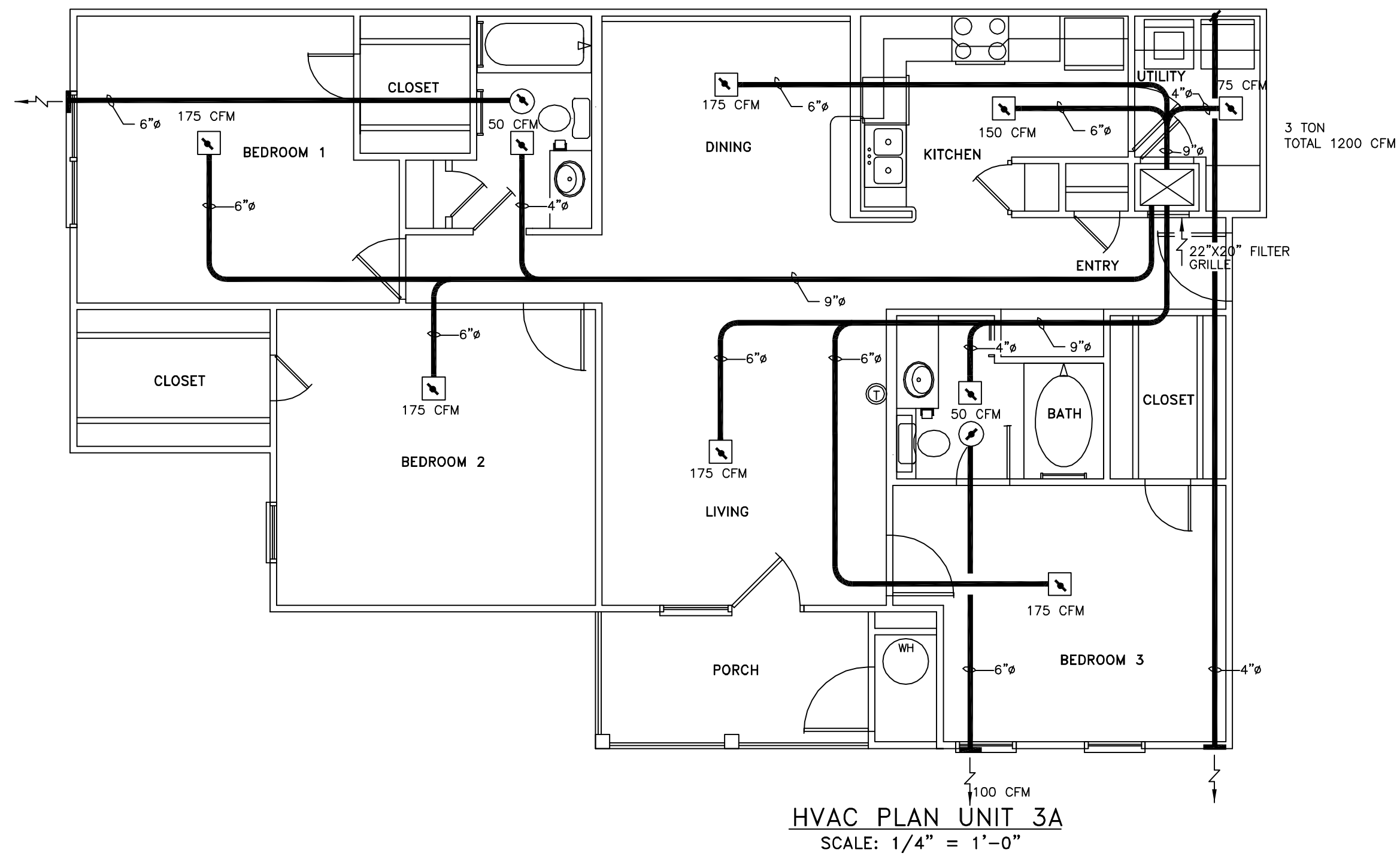
JOB No.: -

DATE: 03-29-04

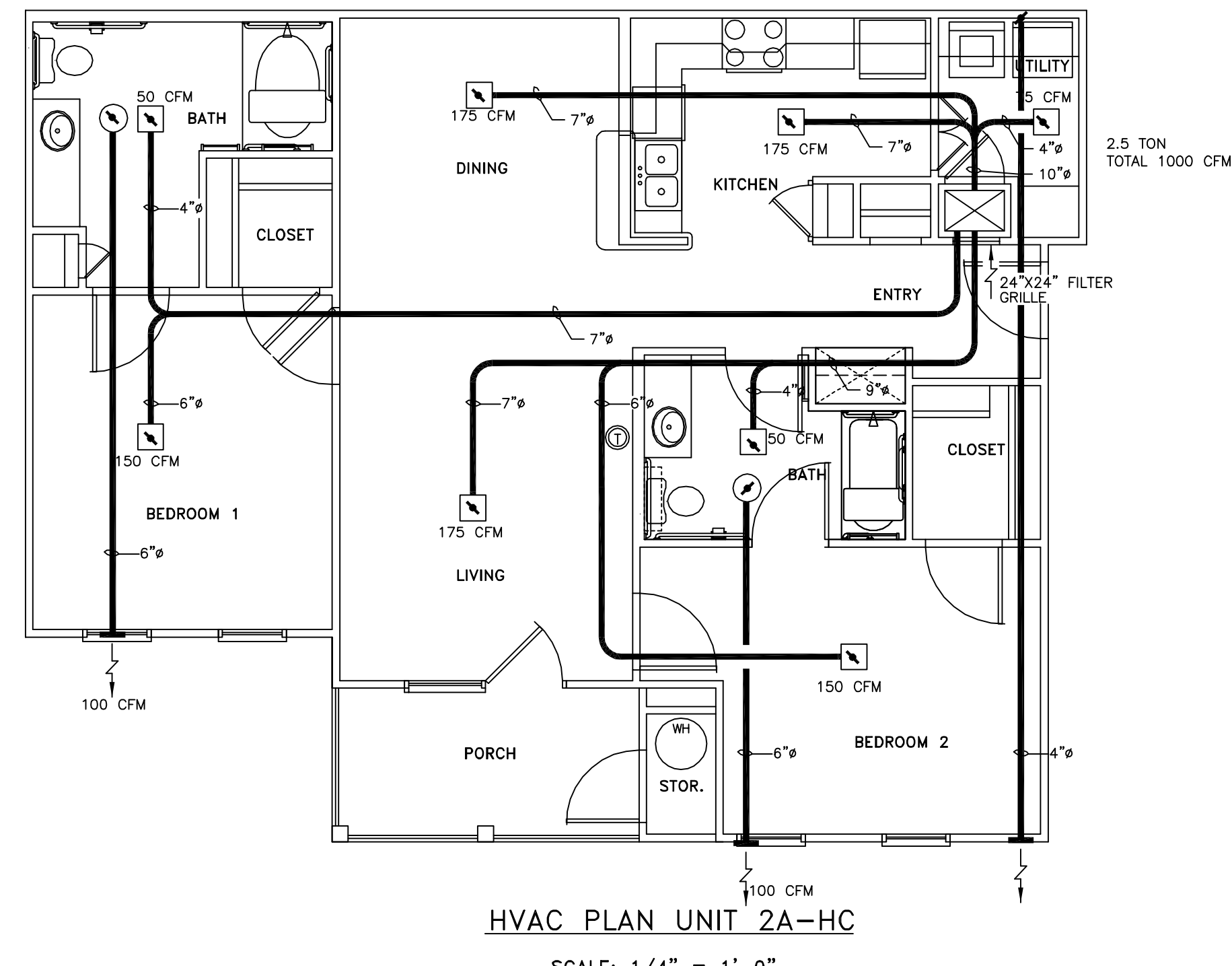
SHEET

M-3

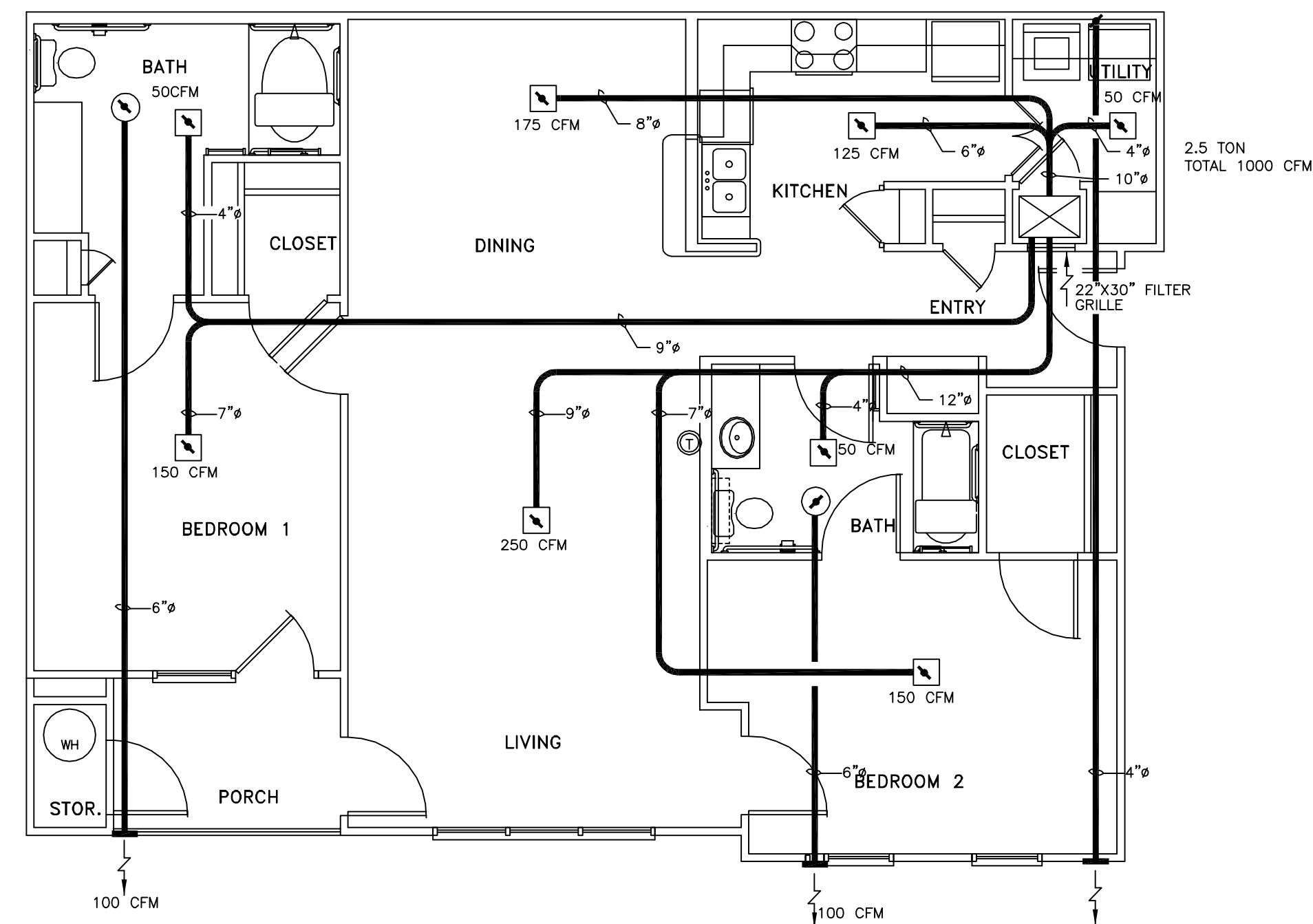
OF -



HVAC PLAN UNIT 3A
SCALE: 1/4" = 1'-0"



HVAC PLAN UNIT 2A-HC
SCALE: 1/4" = 1'-0"



HVAC PLAN UNIT 2B-HC
SCALE: 1/4" = 1'-0"

LEGEND

- SUPPLY AIR VENT
- ↘ FIRE DAMPER
- BATHROOM EXHAUST
- ⊕ THERMOSTAT

MECHANICAL SPECIFICATIONS
2.5 TON HEAT PUMP

EQUIPMENT SELECTIONS

INDOOR HEAT PUMP _____ ADP_BU30210
 AIR FLOW _____ 1000 CFM
 ELECTRICAL SPECIFICATIONS _____ 240V-1ϕ
 UNIT M.C.A. (INCLUDING HEAT) _____ 56.0 AMPS
 REV. CYCLE HEAT CAPACITY _____ 34120 BTUH
 AUX.HEAT CAPACITY _____ 10.0 KW (41.6A)

OUTDOOR HEAT PUMP _____ DUCANE_HP10B30
 ELECTRICAL SPECIFICATIONS _____ 240V-1ϕ
 UNIT M.C.A. _____ 21.4 MCA
 COOLING CAPACITY _____ 30,000 BTUH S.E.E.R. 10.0

MECHANICAL SPECIFICATIONS
3 TON HEAT PUMP

EQUIPMENT SELECTIONS

INDOOR HEAT PUMP _____ ADP_BU3610
 AIR FLOW _____ 1200 CFM
 ELECTRICAL SPECIFICATIONS _____ 240V-1ϕ
 UNIT M.C.A. (INCLUDING HEAT) _____ 60.0 AMPS
 REV. CYCLE HEAT CAPACITY _____ 34120 BTUH
 AUX.HEAT CAPACITY _____ 10.0 KW

OUTDOOR HEAT PUMP _____ DUCANE_HP10B36
 ELECTRICAL SPECIFICATIONS _____ 240V-1ϕ
 UNIT M.C.A. _____ 23.9 MCA
 COOLING CAPACITY _____ 34,400 BTUH S.E.E.R. 10.0

THE BRYAN COMPANY
 ISLAND PARK
 APARTMENT COMMUNITY
 SHREVEPORT, LA.

ISLAND PARK
 DAMMON ENGINEERING INC
 ARCHITECTS - ENGINEERS
 819 ROBERT ROAD
 SLIDELL, LA. 70458

SCALE: AS NOTED

FILE: -

JOB No.: -

DATE: 03-29-04

SHEET

M-4

OF -