



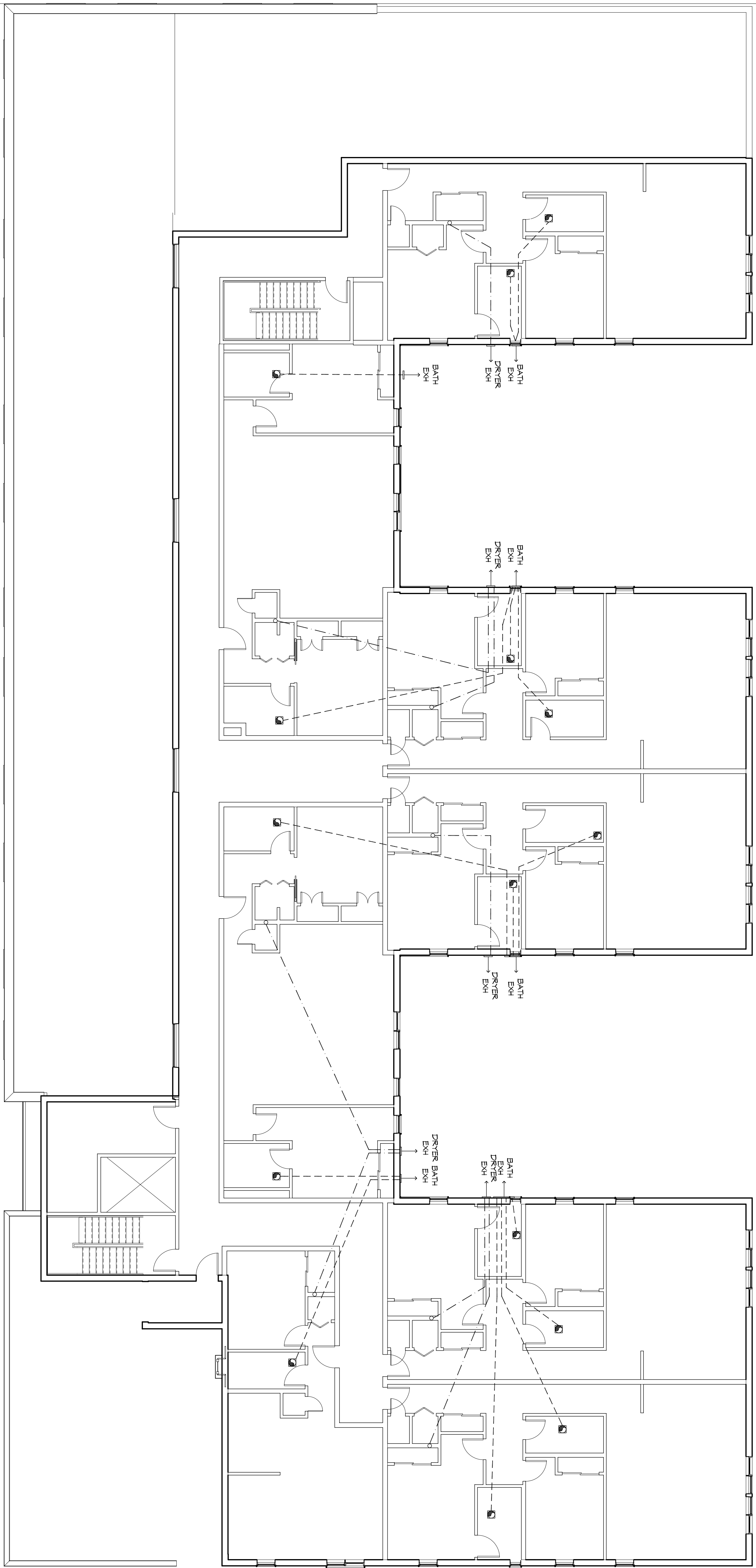


GENERAL HVAC NOTES

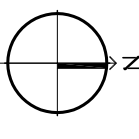
1. CONCEALED DUCTWORK TO BE GALVANIZED SHEET METAL LINED WITH FIBERGLASS GLASS DUCT LINER, MIN R-6. INSTALLED PER SMACNA STANDARDS.
2. EXPOSED DUCTWORK TO BE GALVANIZED SHEET METAL LINED WITH FIBERGLASS GLASS DUCT LINER, MIN R-6. INSTALLED PER SMACNA STANDARDS.
3. ROUND FLEXIBLE DUCT TO BE UL-181, CLASS 1, AIR DUCT MATERIALS.
4. DUCT SIZES SHOWN ARE CLEAR INSIDE DIMENSIONS.
5. IN ALL SYSTEMS OVER 2000 CFM AND LESS THAN 15,000 CFM, SMOKE DETECTORS SHALL BE INSTALLED IN ACCORDANCE WITH NFPA 72E IN THE RETURN DUCT DOWNSTREAM OF THE AIR HANDLING UNIT AND ALL FILTERS TO AUTOMATICALLY STOP THE FAN.
6. PROVIDE UL LISTED 125 F° FRESH AIR RETURN AIR OF EACH SYSTEM UNDER 2000 CFM TO SHUT DOWN THE FAN IN THE EVENT OF FIRE.
7. PROVIDE UL RATED FIRE DAMPERS WHERE REQUIRED AT ALL DUCT PENETRATIONS THROUGH ROOF OR FLOOR. FIRE DAMPERS SHALL BE CONSTRUCTION INCLUDING OUTSIDE AIR INTAKES AND EXHAUST FANS AND FIVE FEET OF AIR HANDLING UNITS.
8. COMPENSATE DRAINS TO BE P-1/2" PIPE RUN TO PLUMBERS P-TRAP WITHIN FIVE FEET OF AIR HANDLING UNITS.
9. ALL AIR HANDLING SYSTEMS TO BE BALANCED TO ASSURE PROPER AIR FLOW PER PLANS.
10. ALL THERMOSTATS TO BE AUTOMATIC CHANGED/OVER WITH HEAT SWITCH.
11. EXHAUST FAN SHALL BE CONTROLLED BY A SWITCH ON THE WALL IN THE SAME LOCATION AS LIGHT SWITCHES. PROVIDE BACK DRIFT DAMPER.
12. PROVIDE AND INSTALL WATER PROOF GULLIE VENT IN PROPER ROOF LOCATION FOR FLOORING THROUGH EXHAUST.
13. ALL SPLIT AIR VENTS SHALL BE EQUIPPED WITH AIR CONTROL DAMPERS AT THE RESISTERS.
14. LOCATE OUTDOOR UNITS AS SHOWN ON ARCHITECTURAL DRAWINGS.
15. REFRIGERANT LINES SHALL BE SIZED BY UNIT MANUFACTURER AND INSTALLED ACCORDING TO MANUFACTURER'S INSTRUCTIONS.
16. FRESH AIR SHALL BE SUPPLIED TO EACH AIR HANDLER THROUGH EXTERIOR WALL DUCT SUPPLIED WITH A CONTROL DAMPER.
17. ALL ELECTRICAL, MECHANICAL, AND PLUMBING PENETRATING FRIEZE WALLS SHALL BE PROTECTED WITH A FRIEZE WALL. ALL PENETRATIONS SHALL BE SEALED WITH AN INTERIOR CAPABLE OF PREVENTING THE PASSAGE OF FLAMES AND HOT GASES WHEN TESTED IN ACCORDANCE WITH ASTM-E814.
18. ALL MECHANICAL SYMBOLS ARE DRAWN DIAGRAMMATICALLY. CONTRACTOR TO VERIFY WITH OWNER LOCATIONS OF VENTS, DAMPERS, REGISTER, ETC.
19. FLEXIBLE DUCTWORK LENGTH NOT TO EXCEED 12'-0".
20. REFER TO REFLECTED CEILING PLAN FOR FINAL GRILLE AND DIFFUSER LOCATIONS AND COORDINATE AS REQUIRED.
21. FINAL LOCATION OF TEMPERATURE CONTROLS TO BE COORDINATED WITH OWNER AT JOB SITE.
22. PROVIDE AND INSTALL SMOKE DETECTORS AS APPROVED BY LOCAL A.H.U.S. PLACE NEAR R/A AND S/A OPENINGS OF AHU AND PROVIDE WITH ACCESS PANEL, MARKING BY ELECTRICAL CONTRACTOR.
23. FRESH AIR INTAKES ARE REQUIRED TO HAVE NOTICED OR GRAVITY DAMPERS TO SHUT OFF WHEN SYSTEM IS NOT RUNNING.
24. PROVIDE BIRD SCREENS AT ALL EXTERIOR MECHANICAL PENETRATIONS.
25. COORDINATE WALL MOUNTED THERMOSTAT LOCATIONS WITH ALL OWNER FURNISHED ITEMS EITHER WALL MOUNTED OR FLOOR MOUNTED AGAINST PARTITIONS. REFER TO ARCHITECTURAL DRAWINGS.
26. SEE ROOF PLAN FOR ALL ROOF PENETRATIONS.
27. PROVIDE MIN. 18 GA GALVANIZED SHEET METAL TO BLANK-OFF GABLE VENTS WHERE INTAKE/EXHAUST DUCTS OCCUR.

LEGEND

-  EXHAUST FAN
-  DRYER EXHAUST, HARD PIPE
-  BATH EXHAUST, HARD PIPE
-  BATH DUCT



BATH EXHAUST FAN			
FAN NO.	CFM	VOLTAGE	TYPE
EF-1	75	120	VENT


MECHANICAL EXHAUST THIRD FLOOR
 SCALE

In Joint venture with:

DAMMON

ENGINEERING, INC.

Architects & Engineers

Chief Engineer: Brian Miskich, PE
 5140 Old Spanish Trail
 Suite 111, LA 70958
 www.dammonengineering.com
 info@dammonengineering.com
 PH: 985.649.3832
 F: 985.641.9590

1581 MAGAZINE STREET
 New Orleans, Louisiana 70130

architecture + planning +
 interiors
 1119 Tchoupitoulas
 Street
 New Orleans, LA 70130
 504.593.9074 tel
 www.studiocto.com

Revisions:
 Permit Documents
 MECHANICAL EXHAUST THIRD FLOOR
 7/16/2015

Issue Purpose:
 Date:

Drawn by:
 Author:
 Sheet:
 Comments:

M106

©2014 STUDIOCTO