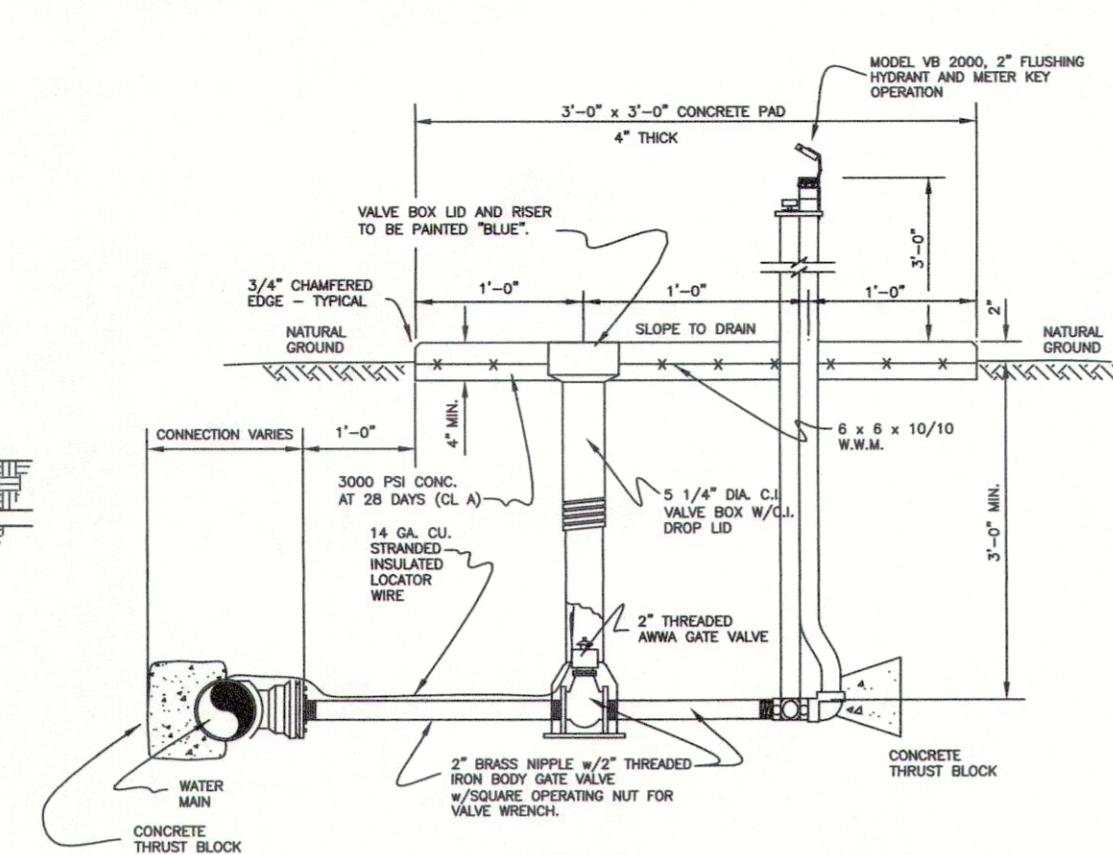


NOTES:

1. ALL BACKFLOW PREVENTERS SHALL BE INSPECTED BY UTILITY COMPANY AND NEED LICENSED STATE CERTIFIED TESTER TO TEST AT INSTALLATION AND A CERTIFICATE SENT TO THE UTILITY COMPANY. TESTS WILL BE REQUIRED ANNUALLY THEREAFTER BY OWNER AND SENT TO THE UTILITY COMPANY.
2. BACKFLOW PREVENTERS SHALL BE REQUIRED ON ALL COMMERCIAL CONNECTIONS UNLESS PRIOR APPROVAL FROM UTILITIES, INC. OF LOUISIANA/LOUISIANA WATER SERVICE, INC. HAS BEEN GRANTED.
3. ALL METERS OVER 2" WILL NEED TO BE COMPOUND METERS.
4. NO METERS LARGER THAN A SINGLE 1" METER WILL BE ALLOWED ON 1" SERVICE LINES.
5. ALL BACKFLOW PREVENTERS ARE BUILDER/CUSTOMER RESPONSIBILITY.

**COMMERCIAL METER w/ REDUCED PRESSURE BACK FLOW PREVENTER**

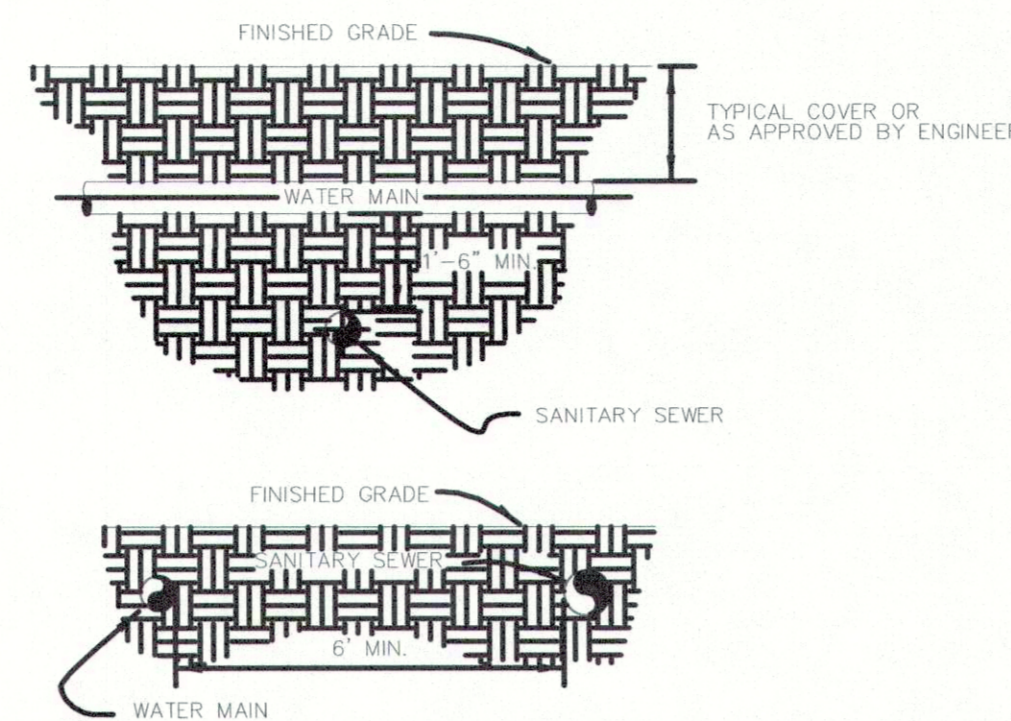
**TYPICAL RISER DETAIL**  
SCALE: N.T.S.



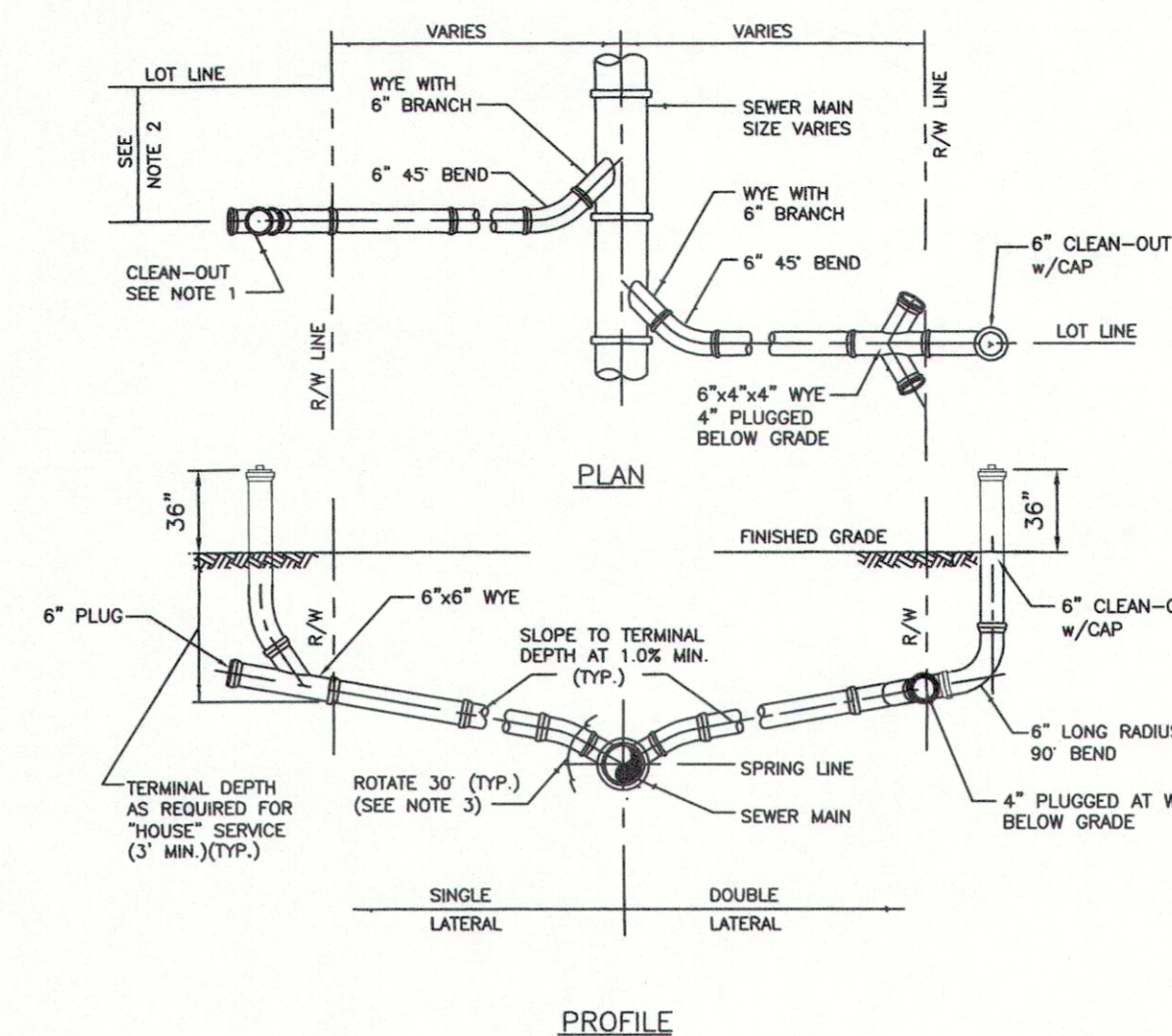
**ABOVE GROUND FLUSH HYDRANT**  
SCALE: N.T.S.

**ABOVE GROUND FLUSH HYDRANT**  
SCALE: N.T.S.

NOTES:  
1. NO GALVANIZED FITTINGS OR PIPES PERMITTED.  
2. ALL NO LEAD BRASS FITTINGS SHALL BE 2" FPT INLET AND 2 1/2" NST OUTLET.  
3. FLUSHING HYDRANT ASSEMBLY SHALL BE WATER PLUS CORPORATION. (CONSULT UTILITY CO. FOR SUPPLIER)

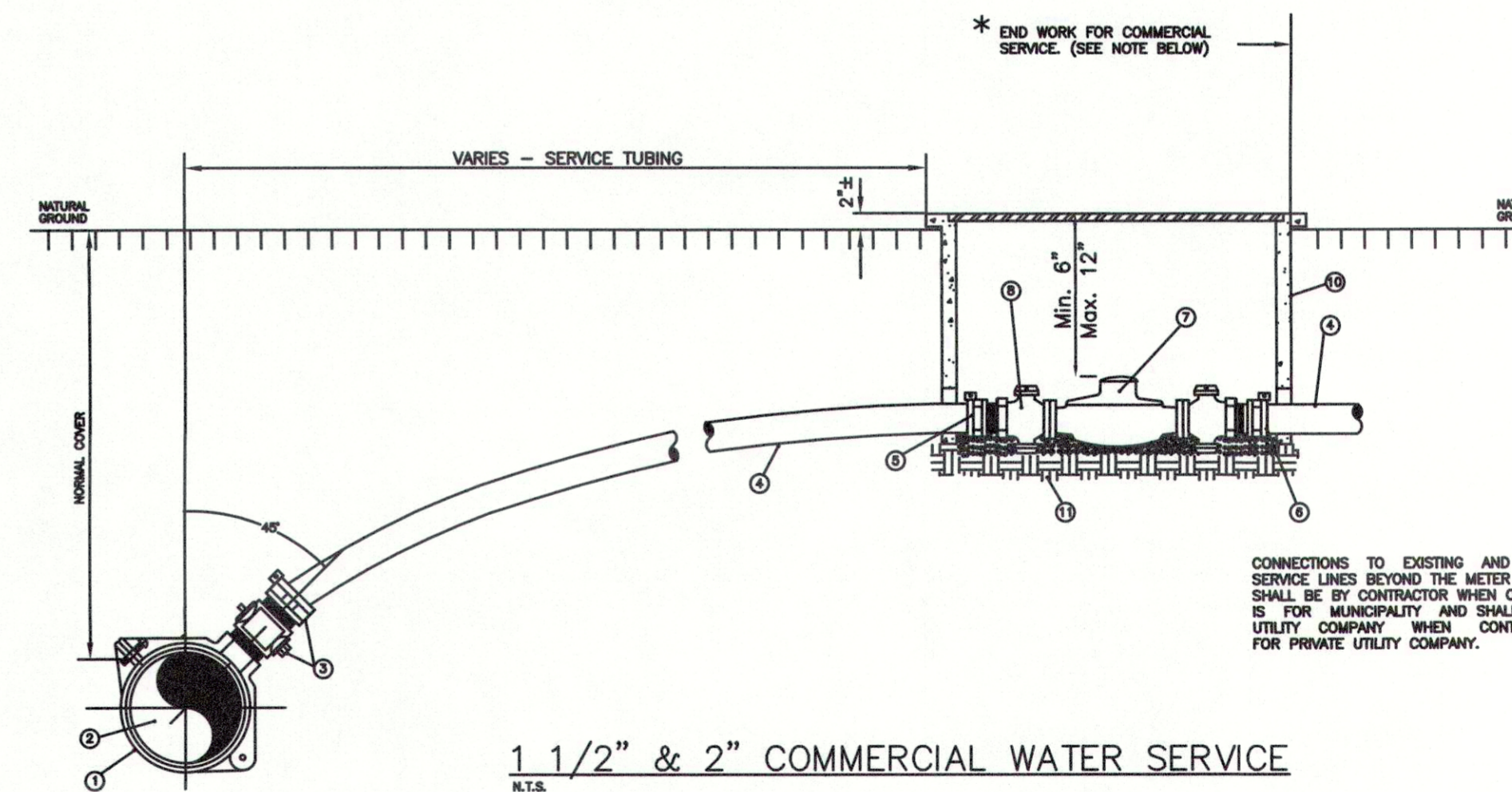


**WATER/SANITARY SEWER CLEARANCES**  
SCALE: N.T.S.



**SANITARY SERVICE LATERAL DETAIL**  
SCALE: N.T.S.

- LEGEND:
- 1 BRASS SADDLE OR S.SINO LEAD - SINGLE STRAP NEOPRENE COATED
  - 2 WATER MAIN
  - 3 CORPORATION STOP L.P.T. THREAD - BRASS
  - 4 SERVICE TUBING - 2" PE 3408 SDR-9
  - 5 PACK JOINT COUPLING OR EQUIVALENT
  - 6 METER-AS SPECIFIED BY UTILITY OWNER & SUPPLIED AND INSTALLED BY CUSTOMER
  - 7 LOCKING BRASS CURB STOP
  - 8 CONCRETE METER BOXES WITH CAST IRON NON-LOCKING LID
  - 9 UNDISTURBED SOIL OR COMPACTED BACKFILL



NOTES:

1. ALL FITTINGS SHALL BE NO LEAD BRASS WITH COMPRESSION/PACK JOINT TYPE OR EQUIVALENT CONNECTIONS.
2. NO SERVICE LINE SHALL TERMINATE UNDER A DRIVEWAY.
3. EACH SERVICE SHALL TERMINATE AT A CURB STOP(S) WHICH SHALL BE BURIED APPROXIMATELY 6" BELOW FINAL GRADE AND SHALL BE CLEARLY MARKED WITH 2"x2"x18" STAKE WITH THE TOP PAINTED BLUE AND MARKED WITH THE NUMBER OF THE LOT(S) TO BE SERVICE.
4. ALL WATER SERVICES AND METER BOXES SHALL BE LOCATED INSIDE THE RIGHT-OF-WAY LINE.
5. CORP. STOPS AND CURB STOPS SHALL BE NO LEAD BRASS EQUIPPED WITH CONNECTION COMPATIBLE TO CONNECTING SERVICE TYPE AS MANUFACTURED BY MUELLER CO. OR APPROVED EQUAL.
6. COMMERCIAL WATER SERVICE CUSTOMERS SHALL BE RESPONSIBLE FOR PROVIDING AND INSTALLING WATER METERS.
7. ALL METERS OVER 2" WILL NEED TO BE COMPOUND METERS.
8. NO METERS LARGER THAN A SINGLE 1" METER WILL BE ALLOWED ON 1" SERVICE LINES.

**3" & SMALLER COMMERCIAL WATER SERVICE CONNECTION**

**WATER SERVICE CONNECTION**  
SCALE: N.T.S.

**GENERAL SITE NOTES**

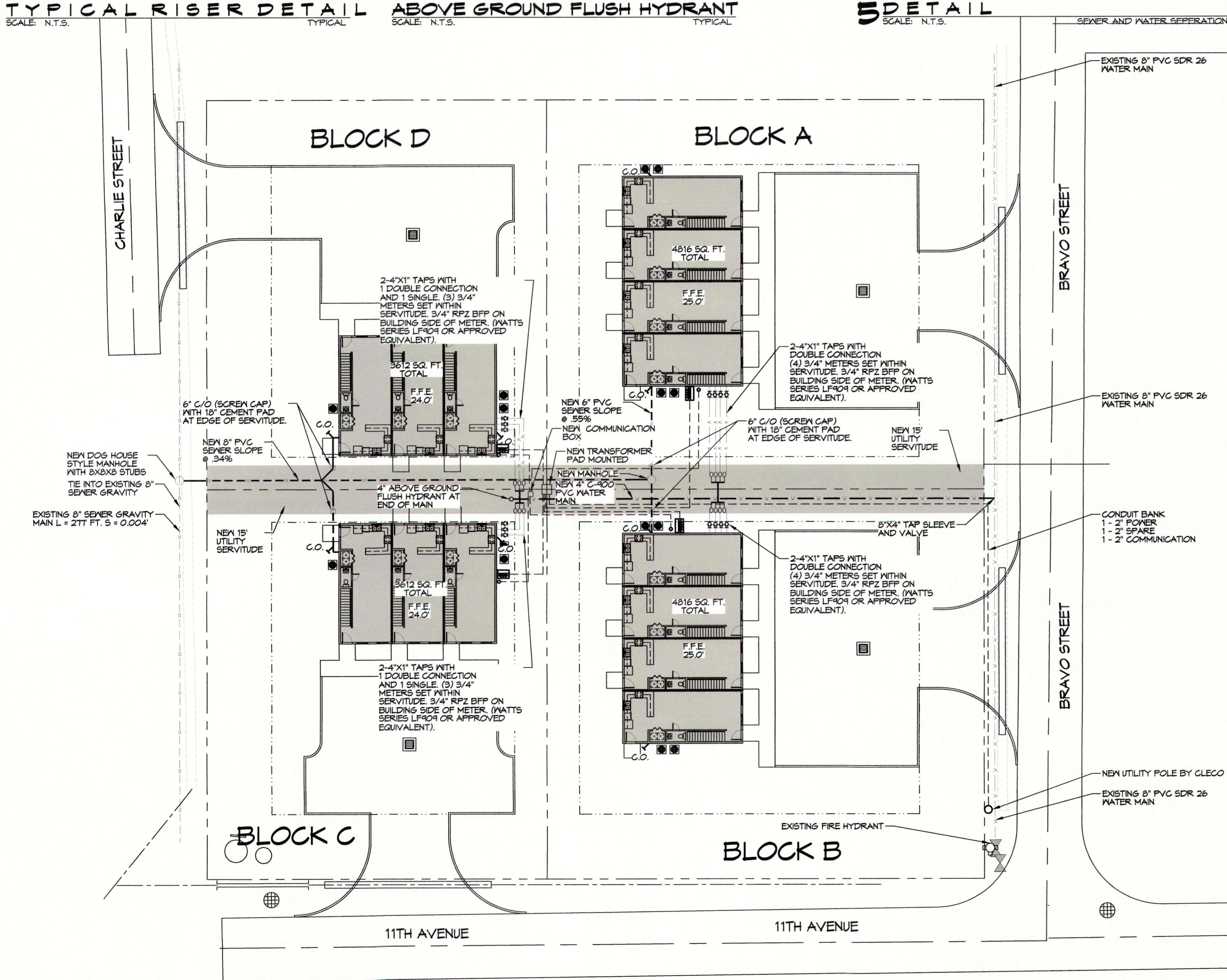
1. PROVIDE ALL LABOR, MATERIAL AND EQUIPMENT FOR A COMPLETE OPERATING SYSTEM. CONTRACTOR IS TO FIELD VERIFY ALL EXISTING UTILITY LOCATIONS, ELEVATIONS, AND INVERTS PRIOR TO COMMENCING ANY WORK. CONTRACTOR SHALL PAY NECESSARY FEES FOR THE UTILITIES CONNECTIONS.
2. CONTRACTOR TO BE RESPONSIBLE TO VERIFY ANY INVERTS AND SET NEW INVERTS OF SEWAGE AND DRAINAGE PIPES.
3. ALL WORK AND MATERIAL TO COMPLY STRICTLY TO THE LATEST LOCAL CITY, PARISH, STATE, AND NATIONAL GOVERNING CODES.
4. SEWAGE LINES 3" AND SMALLER SHALL BE SLOPED 1/4" PER FOOT AND LINES THAT ARE 4" AND LARGER SHALL BE SLOPED 1/8" PER FOOT.
5. CONTRACTOR SHALL CONTACT LOUISIANA ONE CALL PRIOR TO COMMENCEMENT OF SITE EXCAVATION.
6. CONTRACTOR SHALL FOLLOW UTILITIES INC UTILITY CONSTRUCTION MANUAL.

**SITE UTILITIES LEGEND**

- - - - - NEW WATER LINE
- - - - - NEW SEWER LINE
- - - - - NEW ELECTRICAL LINE
- - - - - NEW POWER OVERHEAD LINE

**FOR TAPS**

CONTACT ALVIN KENNEDY WITH UTILITIES INC. OF LOUISIANA FOR TAP CONNECTIONS. 985-849-6646 #12.



ALVIN KENNEDY/UIL 5/8/2020 APPROVED FOR CONSTRUCTION

**2 SITE UTILITY PLAN**  
SCALE: 1" = 20'-0"

**DAMMON ENGINEERING, INC.**  
LOUISIANA & MISSISSIPPI  
Chief Engineer: Brian Misch, PE  
554 Old Spanish Trail  
Slidell, LA 70458  
www.dammonengineering.com  
info@dammonengineering.com  
PH: 985-649-5832

#	DESCRIPTION	DATE

SEAL: 2/11/2020

**NEW APARTMENTS - 4-PLEX  
BLOCK A, PHASE I**  
**BRAVO STREET, LLC**  
10215 BRAVO ST.  
COVINGTON, LA 70435  
JOB NO: 2396 DATE: 05-26-2020  
DRAWN BY: CACD CHECKED BY: BAN

SHEET TITLE:  
SITE UTILITY PLAN  
DRAWING NUMBER:  
**C102**  
SHEET No: 3 of 14