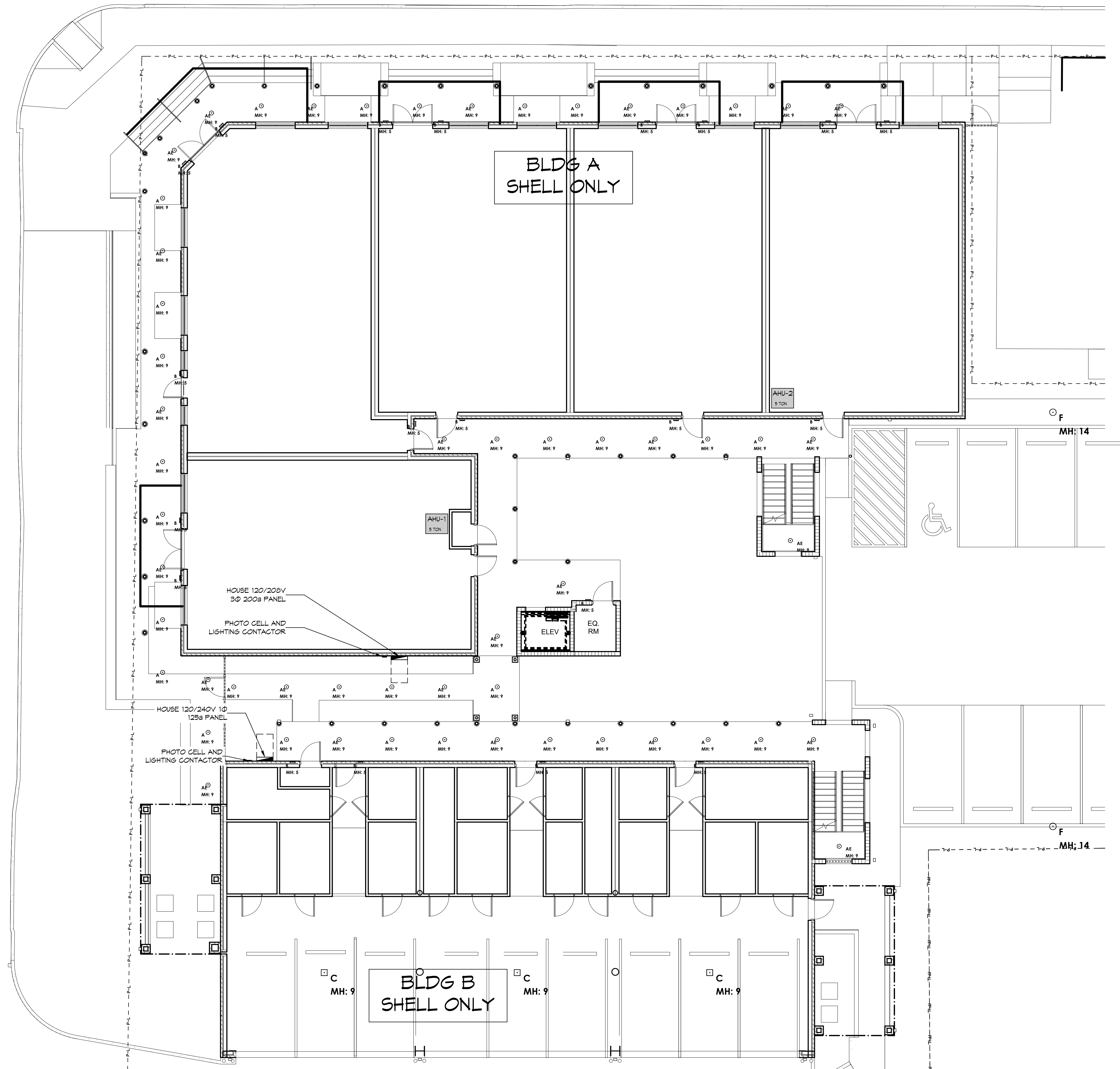


Symbol	Label	Qty	Arrangement	Description	LLF	Lum. Lumens	Lum. Watts
⊕	A	33	Single	ATLANTIC: COM6-SYL11-35K-U / 6CM10-CL	0.900	939	9.5
⊖	AE	24	Single	ATLANTIC: COM6-SYL11-35K-U-EM6 / 6CM10-CL	0.900	939	9.5
⊕	B	22	Single	BROWNLEE: 7601-B12-TRIM-35K	0.900	958	12.26
⊕	C	3	Single	PORTOR: PT-CAT2-HW-3CP [40W; 4K]	0.900	6254	39.7709
⊖	D	5	Single	NLS LIGHTING: ORX-2-T3-16L-1-40K7-UNV-MOUNT-COLOR-CONTROLS	0.900	5582	51
⊖	F	2	Single	NLS LIGHTING: ORX-2-T4-16L-1-40K7-UNV-MOUNT-COLOR-CONTROLS	0.900	5545	51

**GENERAL LIGHTING NOTES**

1. ALL WORK SHALL COMPLY WITH APPLICABLE NATIONAL, STATE, AND LOCAL CODES, RULES, REGULATIONS, AND REQUIREMENTS OF THE SERVICE UTILITY COMPANY.
2. GENERAL CONTRACTOR SHALL NOTIFY THE ARCHITECT IMMEDIATELY IF ANY CONFLICTS OCCUR BETWEEN LIGHTING AND ANY OTHER TRADE. DO NOT PROCEED WITH INSTALLATION IN THAT AREA UNTIL CONFLICT HAS BEEN RESOLVED TO THE SATISFACTION OF THE ARCHITECT AND ENGINEER.
3. REFER TO ARCHITECTURAL DRAWINGS FOR EXACT LOCATION AND MOUNTING INSTRUCTIONS FOR ALL LIGHT FIXTURES. NOTIFY THE ARCHITECT AND ENGINEER OF ANY DISCREPANCIES BETWEEN THESE PLANS AND THE ARCHITECTURAL PLANS RELATING TO QUANTITY, TYPE AND LOCATION OF DEVICES AND/OR FIXTURES.
4. WHEN SPECIFIC LIGHT FIXTURE HAS BEEN SPECIFIED IN THE FIXTURE SCHEDULE, ELECTRICAL CONTRACTOR SHALL PROVIDE COMPLETE ASSEMBLY INCLUSIVE ALL PARTS AND HARDWARE TO INSURE PROPER FUNCTIONING FIXTURE.
5. ALL CONDUCTORS SHALL BE A MINIMUM OF #12 AWG UNLESS NOTED OTHERWISE.
6. ALL 120V RUNS LONGER THAN 60 FEET SHALL BE #10 AWG AND 277V RUNS LONGER THAN 150 FEET SHALL BE #10 AWG UNLESS NOTED OTHERWISE.
7. ALL CONDUCTORS SHALL BE COPPER.
8. WHERE CONDUCTOR SIZES ARE NOTED ON DRAWINGS, THAT WIRE SIZE SHALL BE THROUGH THE ENTIRE RUN UNLESS OTHERWISE NOTED.
9. ALL EMERGENCY EXIT LIGHT FIXTURES SHALL HAVE 90 MINUTE BATTERY BACKUP WITH INTEGRAL TEST BUTTON AND SHALL BURN CONTINUOUSLY.
10. TYPES NM AND NMC CABLES SHALL NOT BE PERMITTED TO BE EXPOSED IN DROPPED OR SUSPENDED CEILINGS.

**DAMMON ENGINEERING, INC.**  
 LOUISIANA & MISSISSIPPI  
 Chief Engineer: Brian A. Mistich, PE  
 554 Old Spanish Trail  
 Slidell, LA 70458  
 www.dammonengineering.com  
 info@dammonengineering.com  
 PH: 985.649.5832



#	DESCRIPTION	DATE



**SHELL BUILDING**  
**S Q U A R E 5**  
**OFFICE AND RETAIL MIXED USE AND**  
**RESIDENTIAL CONDOMINIUMS**  
 BOSTON STREET AND VERMONT STREET,  
 COVINGTON, LA 70433  
 JOB No: 2442 DATE: 3/7/2024  
 DRAWN BY: BAY CHECKED BY: DFP

SHEET TITLE:  
**FIRST FLOOR LIGHTING PLAN**

DRAWING NUMBER:  
**E103**  
 SHEET No: 17 of #

**5 FIRST FLOOR LIGHTING PLAN**  
 SCALE: 1/8" = 1'-0"

**LIGHTING KEY NOTES**  
 PROVIDE CONNECTION TO UN-SWITCHED HOT OF LIGHTING CIRCUIT AND SHALL HAVE 90 MINUTE EMERGENCY BATTERY BACKUP