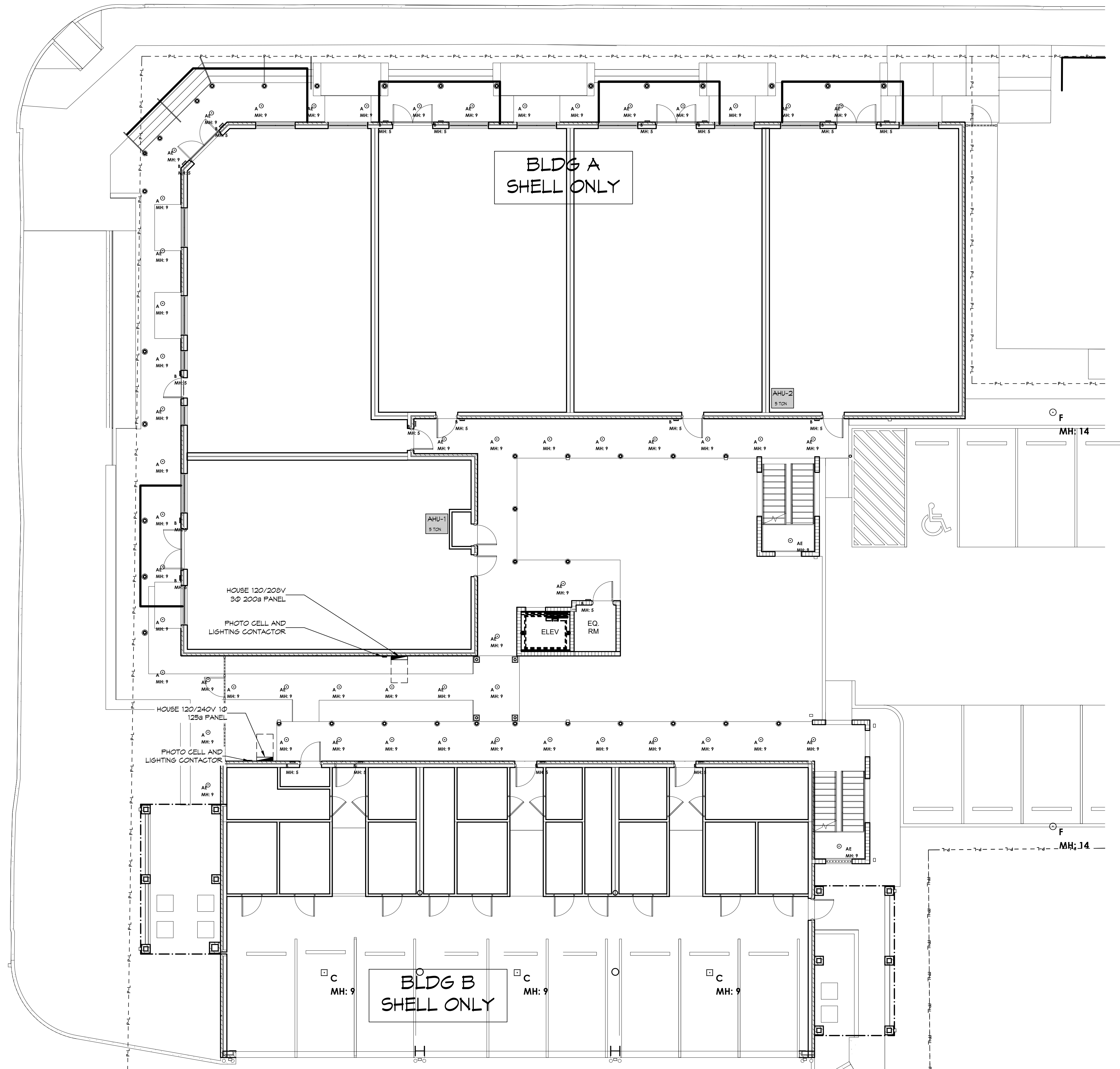


Symbol	Label	Qty	Arrangement	Description	LLF	Lum. Lumens	Lum. Watts
⊕	A	33	Single	ATLANTIC: COM6-SYL11-35K-U / 6CM10-CL	0.900	939	9.5
⊖	AE	24	Single	ATLANTIC: COM6-SYL11-35K-U-EM6 / 6CM10-CL	0.900	939	9.5
⊕	B	22	Single	BROWNLEE: 7601-B12-TRIM-35K	0.900	958	12.26
⊕	C	3	Single	PORTOR: PT-CAT2-HW-3CP [40W; 4K]	0.900	6254	39.7709
⊖	D	5	Single	NLS LIGHTING: ORX-2-T3-16L-1-40K7-UNV-MOUNT-COLOR-CONTROLS	0.900	5582	51
⊖	F	2	Single	NLS LIGHTING: ORX-2-T4-16L-1-40K7-UNV-MOUNT-COLOR-CONTROLS	0.900	5545	51

GENERAL LIGHTING NOTES

1. ALL WORK SHALL COMPLY WITH APPLICABLE NATIONAL, STATE, AND LOCAL CODES, RULES, REGULATIONS, AND REQUIREMENTS OF THE SERVICE UTILITY COMPANY.
2. GENERAL CONTRACTOR SHALL NOTIFY THE ARCHITECT IMMEDIATELY IF ANY CONFLICTS OCCUR BETWEEN LIGHTING AND ANY OTHER TRADE. DO NOT PROCEED WITH INSTALLATION IN THAT AREA UNTIL CONFLICT HAS BEEN RESOLVED TO THE SATISFACTION OF THE ARCHITECT AND ENGINEER.
3. REFER TO ARCHITECTURAL DRAWINGS FOR EXACT LOCATION AND MOUNTING INSTRUCTIONS FOR ALL LIGHT FIXTURES. NOTIFY THE ARCHITECT AND ENGINEER OF ANY DISCREPANCIES BETWEEN THESE PLANS AND THE ARCHITECTURAL PLANS RELATING TO QUANTITY, TYPE AND LOCATION OF DEVICES AND/OR FIXTURES.
4. WHEN SPECIFIC LIGHT FIXTURE HAS BEEN SPECIFIED IN THE FIXTURE SCHEDULE, ELECTRICAL CONTRACTOR SHALL PROVIDE COMPLETE ASSEMBLY INCLUSIVE ALL PARTS AND HARDWARE TO INSURE PROPER FUNCTIONING FIXTURE.
5. ALL CONDUCTORS SHALL BE A MINIMUM OF #12 AWG UNLESS NOTED OTHERWISE.
6. ALL 120V RUNS LONGER THAN 60 FEET SHALL BE #10 AWG AND 277V RUNS LONGER THAN 150 FEET SHALL BE #10 AWG UNLESS NOTED OTHERWISE.
7. ALL CONDUCTORS SHALL BE COPPER.
8. WHERE CONDUCTOR SIZES ARE NOTED ON DRAWINGS, THAT WIRE SIZE SHALL BE THROUGH THE ENTIRE RUN UNLESS OTHERWISE NOTED.
9. ALL EMERGENCY EXIT LIGHT FIXTURES SHALL HAVE 90 MINUTE BATTERY BACKUP WITH INTEGRAL TEST BUTTON AND SHALL BURN CONTINUOUSLY.
10. TYPES NM AND NMC CABLES SHALL NOT BE PERMITTED TO BE EXPOSED IN DROPPED OR SUSPENDED CEILINGS.

DAMMON ENGINEERING, INC.
 LOUISIANA & MISSISSIPPI
 Chief Engineer: Brian A. Mistich, PE
 554 Old Spanish Trail
 Slidell, LA 70458
 www.dammonengineering.com
 info@dammonengineering.com
 PH: 985.649.5832



5 FIRST FLOOR LIGHTING PLAN
 SCALE: 1/8" = 1'-0"

LIGHTING KEY NOTES
 PROVIDE CONNECTION TO UN-SWITCHED HOT OF LIGHTING CIRCUIT AND SHALL HAVE 90 MINUTE EMERGENCY BATTERY BACKUP

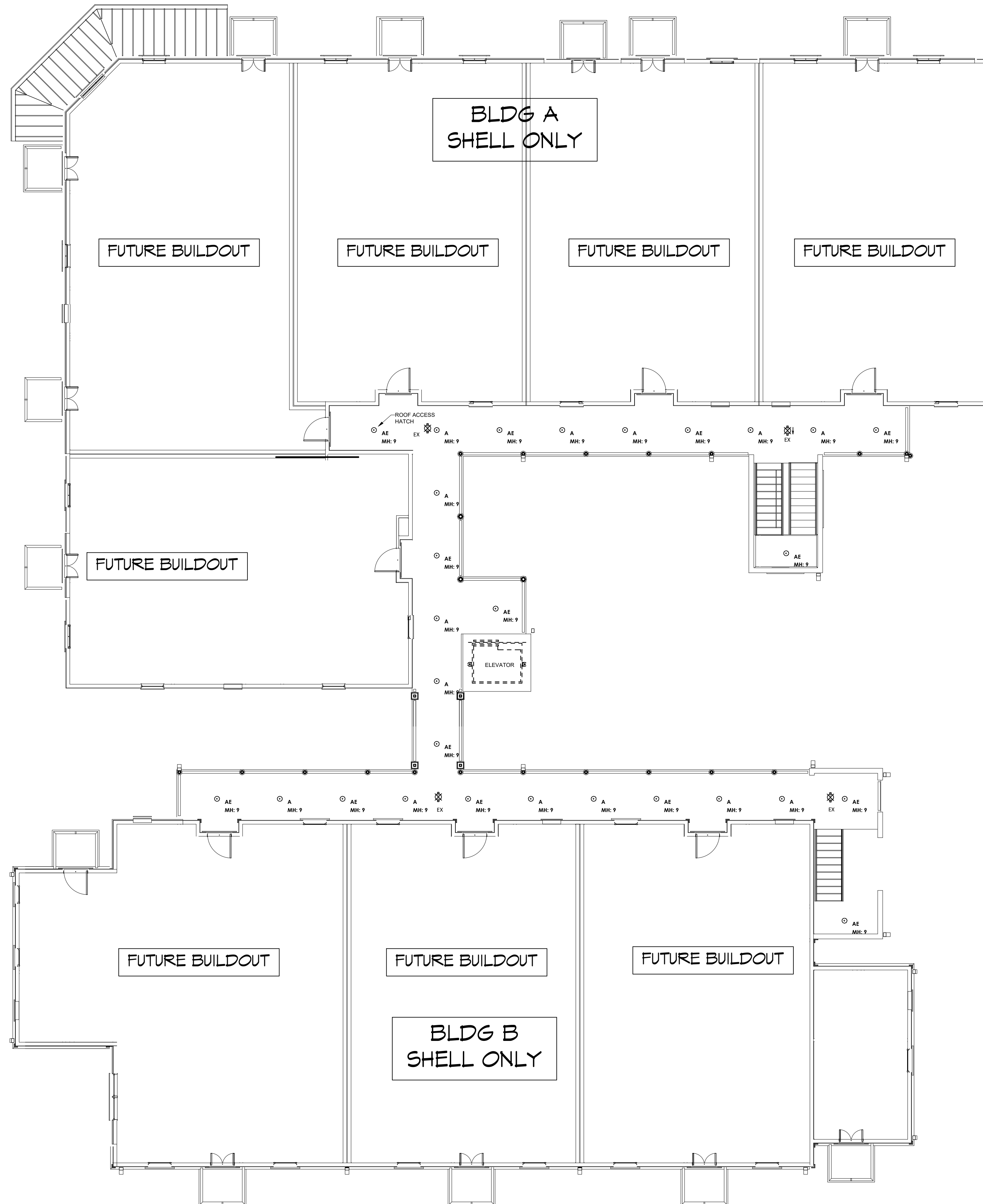
#	DESCRIPTION	DATE



SHELL BUILDING
S Q U A R E 5
OFFICE AND RETAIL MIXED USE AND
RESIDENTIAL CONDOMINIUMS
 BOSTON STREET AND VERMONT STREET,
 COVINGTON, LA 70458
 JOB No: 2442 DATE: 3/7/2024
 DRAWN BY: BAY CHECKED BY: DFP

SHEET TITLE:
FIRST FLOOR LIGHTING PLAN
 DRAWING NUMBER:
E103
 SHEET No: 17 of #

Symbol	Label	Qty	Arrangement	Description	LLF	Lum. Lumens	Lum. Watts
⊙	A	14	Single	ATLANTIC: COM6-SYL11-35K-U / 6CM10-CL	0.900	939	9.5
⊙	AE	12	Single	ATLANTIC: COM6-SYL11-35K-U-EM6 / 6CM10-CL	0.900	939	9.5
⊗	EX	4	Single	SURE-LIGHT: EUS70R			



GENERAL LIGHTING NOTES

1. ALL WORK SHALL COMPLY WITH APPLICABLE NATIONAL, STATE, AND LOCAL CODES, RULES, REGULATIONS, AND REQUIREMENTS OF THE SERVICE UTILITY COMPANY.
2. GENERAL CONTRACTOR SHALL NOTIFY THE ARCHITECT IMMEDIATELY IF ANY CONFLICTS OCCUR BETWEEN LIGHTING AND ANY OTHER TRADE. DO NOT PROCEED WITH INSTALLATION IN THAT AREA UNTIL CONFLICT HAS BEEN RESOLVED TO THE SATISFACTION OF THE ARCHITECT AND ENGINEER.
3. REFER TO ARCHITECTURAL DRAWINGS FOR EXACT LOCATION AND MOUNTING INSTRUCTIONS FOR ALL LIGHT FIXTURES. NOTIFY THE ARCHITECT AND ENGINEER OF ANY DISCREPANCIES BETWEEN THESE PLANS AND THE ARCHITECTURAL PLANS RELATING TO QUANTITY, TYPE AND LOCATION OF DEVICES AND/OR FIXTURES.
4. WHEN SPECIFIC LIGHT FIXTURE HAS BEEN SPECIFIED IN THE FIXTURE SCHEDULE, ELECTRICAL CONTRACTOR SHALL PROVIDE COMPLETE ASSEMBLY INCLUSIVE ALL PARTS AND HARDWARE TO INSURE PROPER FUNCTIONING FIXTURE.
5. ALL CONDUCTORS SHALL BE A MINIMUM OF #12 AWG UNLESS NOTED OTHERWISE.
6. ALL 120V RUNS LONGER THAN 60 FEET SHALL BE #10 AWG AND 277V RUNS LONGER THAN 150 FEET SHALL BE #10 AWG UNLESS NOTED OTHERWISE.
7. ALL CONDUCTORS SHALL BE COPPER.
8. WHERE CONDUCTOR SIZES ARE NOTED ON DRAWINGS, THAT WIRE SIZE SHALL BE THROUGH THE ENTIRE RUN UNLESS OTHERWISE NOTED.
9. ALL EMERGENCY EXIT LIGHT FIXTURES SHALL HAVE 90 MINUTE BATTERY BACKUP WITH INTEGRAL TEST BUTTON AND SHALL BURN CONTINUOUSLY.
10. TYPES NM AND NMC CABLES SHALL NOT BE PERMITTED TO BE EXPOSED IN DROPPED OR SUSPENDED CEILINGS.

DAMMON ENGINEERING, INC.
LOUISIANA & MISSISSIPPI

www.dammonengineering.com
info@dammonengineering.com
Ph: 985.649.5832

Chief Engineer: Brian Mistich, PE
554 Old Spanish Trail
Slidell, LA 70458

#	DESCRIPTION	DATE

SEAL:

SHELL BUILDING
S Q U A R E 5
OFFICE AND RETAIL MIXED USE AND
RESIDENTIAL CONDOMINIUMS

BOSTON STREET AND VERMONT STREET,
COVINGTON, LA 70458

JOB No: 2442 DATE: 3/7/2024
DRAWN BY: BAY CHECKED BY: DFP

SHEET TITLE:
THIRD FLOOR LIGHTING
PLAN

DRAWING NUMBER:

E105

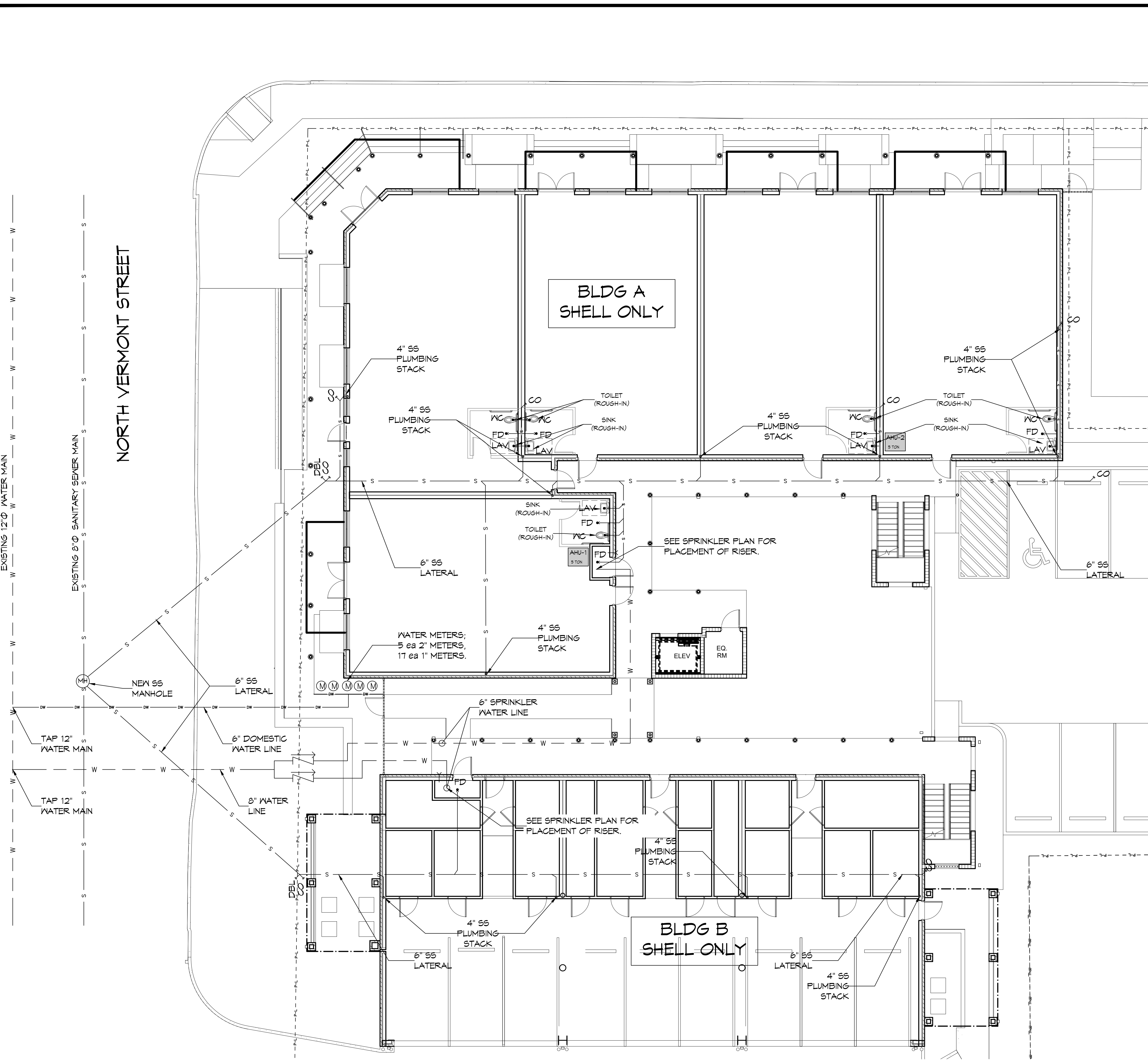
SHEET No: of #

7TH FLOOR LIGHTING PLAN
SCALE: 1/8" = 1'-0"

LIGHTING KEY NOTES

▶ PROVIDE CONNECTION TO UN-SWITCHED HOT OF LIGHTING CIRCUIT AND SHALL HAVE 90 MINUTE EMERGENCY BATTERY BACKUP

FILE NAME: J:\Projects\2024\240101\240101.dwg DATE: 4/11/2024 10:33:33 AM



GENERAL PLUMBING NOTES

- PLUMBING LINES SHOWN ARE DRAWN DIAGRAMMATIC IN NATURE AND REPRESENT CONCEPTUAL ROUTING ONLY. CONTRACTOR IS RESPONSIBLE FOR FIELD VERIFICATION OF ALL ACTUAL CONDITIONS.
- PROVIDE ALL LABOR, MATERIAL, TRANSPORTATION, SUPERVISION, CLEAN-UP, SERVICES, AND EQUIPMENT FOR A COMPLETE OPERATING SYSTEM. THE SYSTEM SHALL INCLUDE HOT AND COLD WATER PIPING, SEWER AND VENT PIPING, INSULATION, WATER HEATER, HANGERS, VALVES, SUPPORTS WITHOUT ANY RESTRICTIONS TO VOLUME. CUT AND PATCH AS REQUIRED TO INSTALL PIPES.
- ALL WORK AND MATERIAL SHALL CONFORM STRICTLY TO THE LATEST LOCAL CITY, PARISH, STATE AND NATIONAL GOVERNING CODES. MUST MEET LA STATE PLUMBING CODE 2013 REQUIREMENTS.
- CONTRACTOR IS TO FIELD VERIFY ALL EXISTING UTILITY LOCATIONS, ELEVATIONS AND SIZES PRIOR TO COMMENCING ANY WORK. CONTRACTOR SHALL PAY NECESSARY FEES FOR THE UTILITIES CONNECTIONS.
- CONTRACTOR IS RESPONSIBLE TO VERIFY THE EXISTING INVERTS AND SET NEW INVERTS OF SEWERAGE AND DRAINAGE PIPES.
- SEWERAGE LINES 3-INCH AND SMALLER SHALL BE SLOPED 1/4" PER FOOT AND LINES 4-INCH AND LARGER SHALL BE 1/8" PER FOOT.
- TEST ALL PIPING AT REQUIRED PRESSURE.
- ALL PLUMBING SHALL BE CLOSELY COORDINATED WITH STRUCTURAL, MECHANICAL SYSTEM AND ELECTRICAL SYSTEMS TO INSURE NO TRADES WILL CONFLICT WITH EACH OTHER.
- DO NOT SCALE DRAWINGS. SEE ARCHITECTURAL DRAWINGS FOR EXACT LOCATIONS OF DOORS, WINDOWS, WALLS, FIXTURES, ETC.
- ALL WATER MAINS AND PIPING NOT SHOWN FOR CLARITY, ALL LOCATIONS FIELD VERIFIED.
- DOMESTIC HOT AND COLD WATER PIPING AND FITTINGS UNDER SLAB SHALL BE ASTM B88 COPPER WATER TUBE, TYPE K, SOFT ANNEALED. NO JOINTS SHALL BE ALLOWED UNDER THE SLAB.
- DOMESTIC WATER PIPING AND FITTINGS ABOVE THE SLAB SHALL BE ASTM B88 COPPER WATER TUBE, TYPE L, HARD DRAWN WITH COPPER PRESSURE TYPE FITTINGS, ANSI B16.22. THE JOINTS SHALL BE SOLDERED TYPE USING ASTM B32, ALLOY GRADE 95A (95-3) SOLDER.
- SOL, WASTE, VENT PIPING AND FITTINGS ABOVE THE SLAB SHALL BE SERVICE WEIGHT CAST IRON PIPE WITH BELL AND SPIGOT ENDS AND ONE PIECE NEOPRENE INSERT TYPE GASKET. USE PVC SCHEDULE 40 OR ABS DWV PIPES AND FITTINGS WHERE PERMITTED BY CODE.
- ALL WATER PIPING AND FITTINGS ABOVE THE FLOOR SHALL BE INSULATED WITH 1/2" THICK FIBERGLASS INSULATION AND JACKET.
- ALL ELECTRICAL, MECHANICAL AND PLUMBING ELEMENTS PENETRATING FIRE PARTITIONS SHALL BE FIRE CAULKED. (PENETRATIONS THROUGH RATED CONSTRUCTION SHALL BE SEALED WITH A MATERIAL CAPABLE OF PREVENTING THE PASSAGE OF FLAMES AND HOT GASES WHEN TESTED IN ACCORDANCE WITH ASTM-E814.)
- SEE ROOF PLAN FOR PLUMBING ROOF PENETRATIONS. ROUTE VENT PIPES IN ATTIC AS NECESSARY.
- ALL VENTS THROUGH ROOF (VTR) SHALL BE LOCATED A MINIMUM OF 10'-0" FROM ANY MECHANICAL OR NATURAL AIR INTAKE.

PLUMBING ABBREVIATIONS

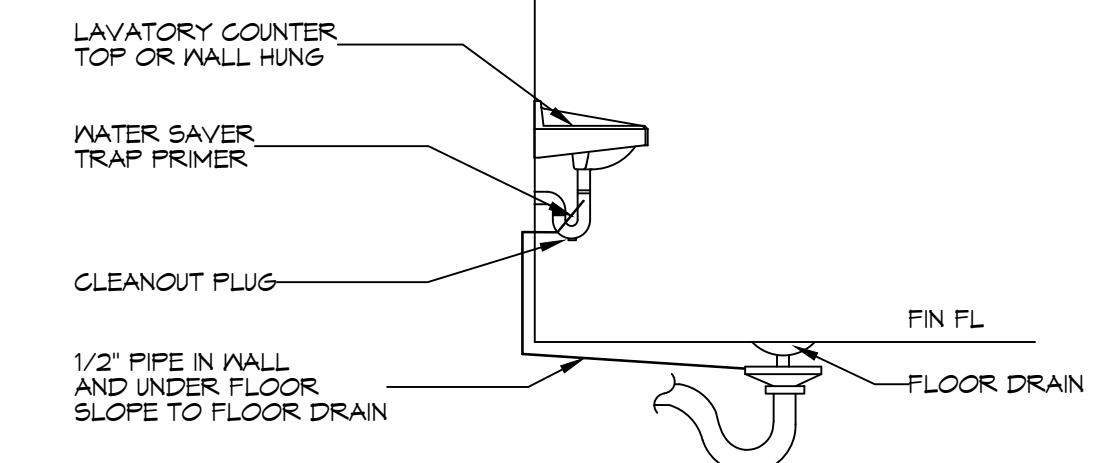
LAV	LAVATORY
WC	WATER CLOSET
WASHER	WASHING MACHINE
WH	WATER HEATER
SINK	SINK
FD	FLOOR DRAIN

PLUMBING LEGEND

- () PLUMBING CONNECTION
- PLUMBING STACK
- S — GRAVITY FED SANITARY SEWER LINE
- DW — POTABLE DOMESTIC WATER LINE
- W — WATER LINE
- — — — — CHECK VALVE/BACKFLOW PREVENTER. SEE CIVIL SHEET FOR DETAILS.

PLUMBING CONSTRUCTION NOTES

- 1ST FLOOR OF BUILDING 'A' & 'B' SHALL RECEIVE SUB GRADE PLUMBING. NO BUILD-OUT(S) UNDER THIS PLAN.



(A) FLOOR DRAIN TRAP PRIMER
TYPICAL DETAILS
 SCALE: N.T.S.

1ST FLOOR PLUMBING PLAN
 SCALE: 1/8" = 1'-0"

DAMMON
ENGINEERING, INC.
 LOUISIANA & MISSISSIPPI
 Chief Engineer: Brian A. Mistich, PE
 554 Old Spanish Trail
 Slidell, LA 70458
 www.dammonengineering.com
 info@dammonengineering.com
 PH: 985.649.5832

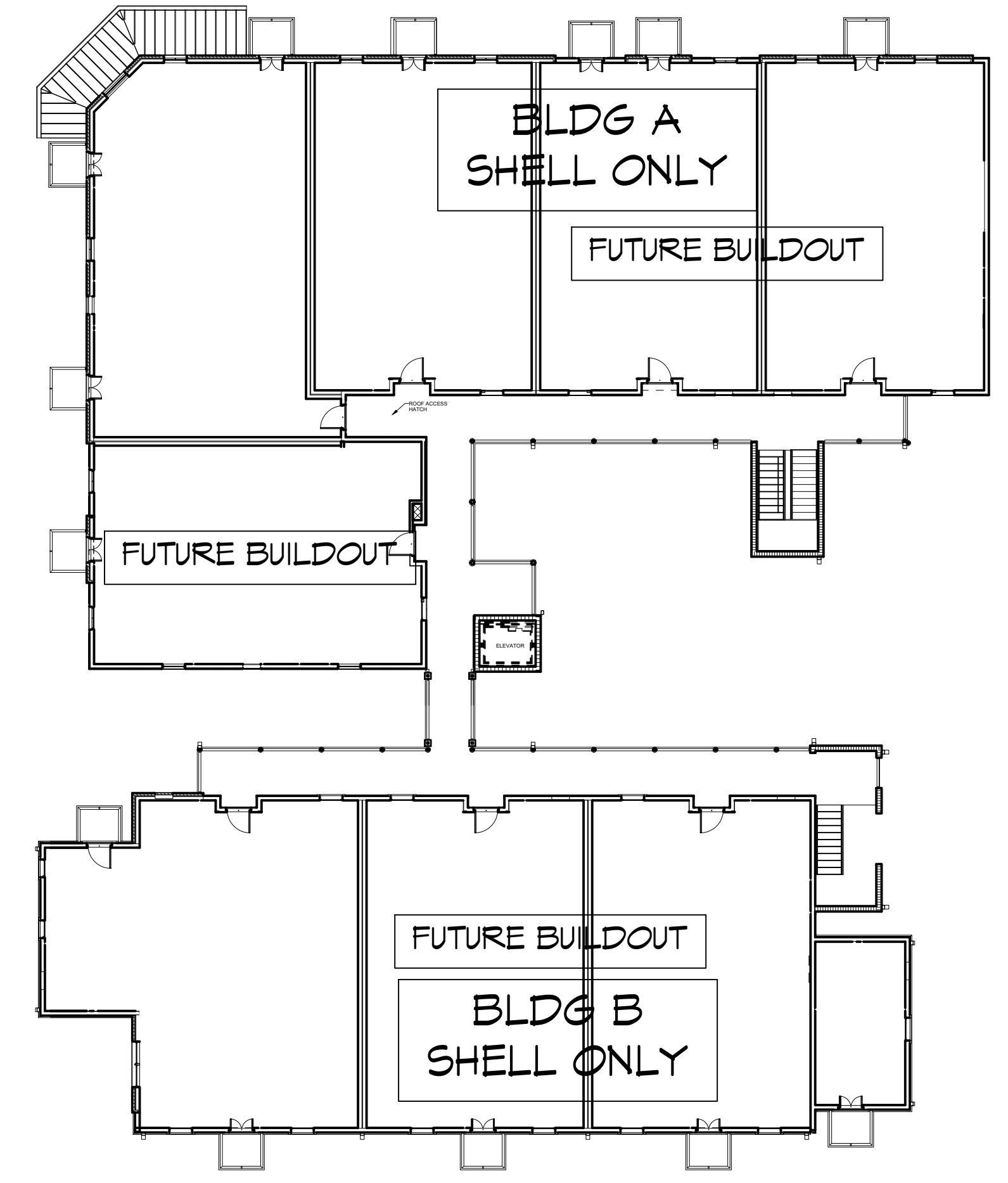
DATE	DESCRIPTION

SEAL:

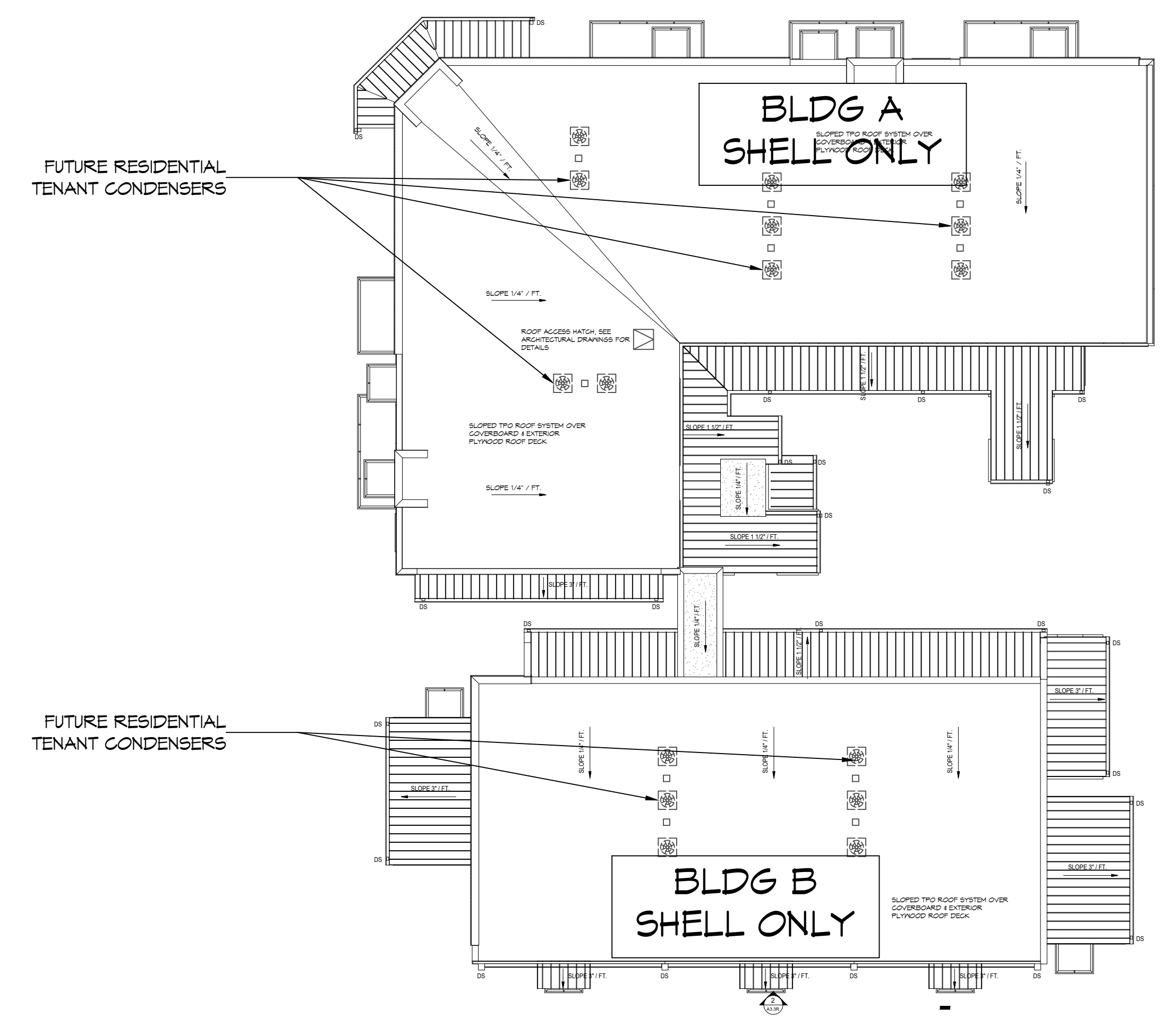
SHELL BUILDING
S Q U A R E B
OFFICE AND RETAIL MIXED USE AND
RESIDENTIAL CONDOMINIUMS
 BOSTON STREET AND VERMONT STREET,
 COVINGTON, LA 70458
 JOB No: 2442 DATE: 3/7/2024
 DRAWN BY: BAK CHECKED BY: CKD

SHEET TITLE:
FIRST FLOOR PLUMBING PLAN
 DRAWING NUMBER:
P101
 SHEET No: 17 of #

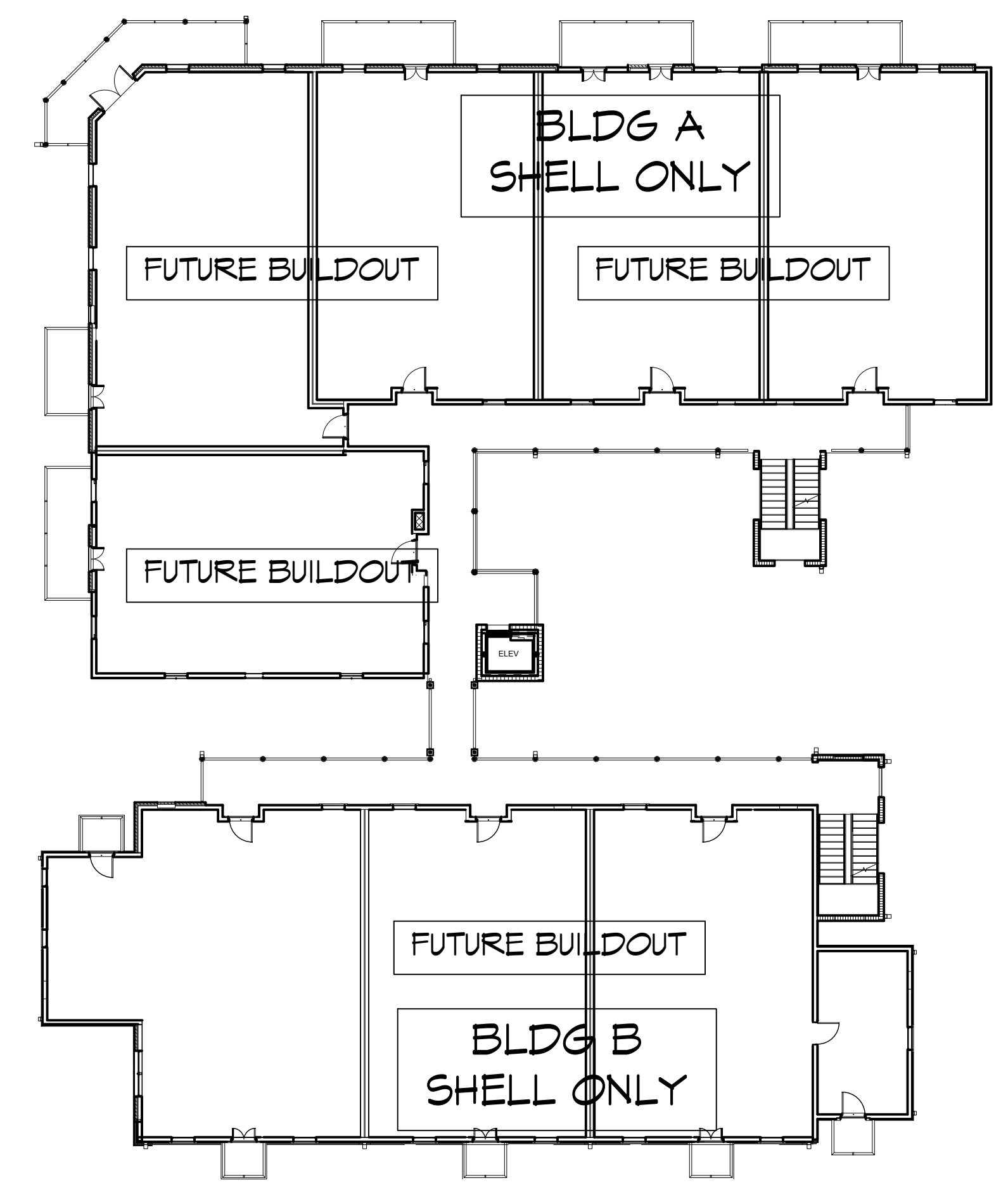
FILE NAME: \\s:\projects\2402 - Wash - 3 - 2402\Drawings\3rd Floor Plumbing.dwg - 2nd Fl. Plumbing.dwg - 3rd Fl. Plumbing.dwg - 4th Fl. Plumbing.dwg - 5th Fl. Plumbing.dwg - 6th Fl. Plumbing.dwg - 7th Fl. Plumbing.dwg - 8th Fl. Plumbing.dwg - 9th Fl. Plumbing.dwg - 10th Fl. Plumbing.dwg - 11th Fl. Plumbing.dwg - 12th Fl. Plumbing.dwg - 13th Fl. Plumbing.dwg - 14th Fl. Plumbing.dwg - 15th Fl. Plumbing.dwg - 16th Fl. Plumbing.dwg - 17th Fl. Plumbing.dwg - 18th Fl. Plumbing.dwg - 19th Fl. Plumbing.dwg - 20th Fl. Plumbing.dwg - 21st Fl. Plumbing.dwg - 22nd Fl. Plumbing.dwg - 23rd Fl. Plumbing.dwg - 24th Fl. Plumbing.dwg - 25th Fl. Plumbing.dwg - 26th Fl. Plumbing.dwg - 27th Fl. Plumbing.dwg - 28th Fl. Plumbing.dwg - 29th Fl. Plumbing.dwg - 30th Fl. Plumbing.dwg - 31st Fl. Plumbing.dwg - 32nd Fl. Plumbing.dwg - 33rd Fl. Plumbing.dwg - 34th Fl. Plumbing.dwg - 35th Fl. Plumbing.dwg - 36th Fl. Plumbing.dwg - 37th Fl. Plumbing.dwg - 38th Fl. Plumbing.dwg - 39th Fl. Plumbing.dwg - 40th Fl. Plumbing.dwg - 41st Fl. Plumbing.dwg - 42nd Fl. Plumbing.dwg - 43rd Fl. Plumbing.dwg - 44th Fl. Plumbing.dwg - 45th Fl. Plumbing.dwg - 46th Fl. Plumbing.dwg - 47th Fl. Plumbing.dwg - 48th Fl. Plumbing.dwg - 49th Fl. Plumbing.dwg - 50th Fl. Plumbing.dwg - 51st Fl. Plumbing.dwg - 52nd Fl. Plumbing.dwg - 53rd Fl. Plumbing.dwg - 54th Fl. Plumbing.dwg - 55th Fl. Plumbing.dwg - 56th Fl. Plumbing.dwg - 57th Fl. Plumbing.dwg - 58th Fl. Plumbing.dwg - 59th Fl. Plumbing.dwg - 60th Fl. Plumbing.dwg - 61st Fl. Plumbing.dwg - 62nd Fl. Plumbing.dwg - 63rd Fl. Plumbing.dwg - 64th Fl. Plumbing.dwg - 65th Fl. Plumbing.dwg - 66th Fl. Plumbing.dwg - 67th Fl. Plumbing.dwg - 68th Fl. Plumbing.dwg - 69th Fl. Plumbing.dwg - 70th Fl. Plumbing.dwg - 71st Fl. Plumbing.dwg - 72nd Fl. Plumbing.dwg - 73rd Fl. Plumbing.dwg - 74th Fl. Plumbing.dwg - 75th Fl. Plumbing.dwg - 76th Fl. Plumbing.dwg - 77th Fl. Plumbing.dwg - 78th Fl. Plumbing.dwg - 79th Fl. Plumbing.dwg - 80th Fl. Plumbing.dwg - 81st Fl. Plumbing.dwg - 82nd Fl. Plumbing.dwg - 83rd Fl. Plumbing.dwg - 84th Fl. Plumbing.dwg - 85th Fl. Plumbing.dwg - 86th Fl. Plumbing.dwg - 87th Fl. Plumbing.dwg - 88th Fl. Plumbing.dwg - 89th Fl. Plumbing.dwg - 90th Fl. Plumbing.dwg - 91st Fl. Plumbing.dwg - 92nd Fl. Plumbing.dwg - 93rd Fl. Plumbing.dwg - 94th Fl. Plumbing.dwg - 95th Fl. Plumbing.dwg - 96th Fl. Plumbing.dwg - 97th Fl. Plumbing.dwg - 98th Fl. Plumbing.dwg - 99th Fl. Plumbing.dwg - 100th Fl. Plumbing.dwg



3 3RD FLOOR PLUMBING PLAN
SCALE: 1/16" = 1'-0"



4 ROOF PLUMBING PLAN
SCALE: 1/16" = 1'-0"



2 2ND FLOOR PLUMBING PLAN
SCALE: 1/16" = 1'-0"

GENERAL POWER NOTES
1. THESE RESIDENTIAL FLOORS TO BE DESIGNED AND PERMITTED SEPARATELY

DAMMON ENGINEERING, INC.
LOUISIANA & MISSISSIPPI
Chief Engineer: Brian Mistich, PE
554 Old Spanish Trail
Slidell, LA 70458
www.dammonengineering.com
info@dammonengineering.com
PH: 985.649.5832

#	DESCRIPTION	REVISIONS	DATE

SEAL:
STATE OF LOUISIANA
BRIAN A. MISTICH
LICENSE NO. 30181
4/17/2024
BAM

SHELL BUILDING
SQUARE 5
OFFICE AND RETAIL MIXED USE AND
RESIDENTIAL CONDOMINIUMS
BOSTON STREET AND VERMONT STREET,
COVINGTON, LA 70439
JOB No: 2442 DATE: 3/7/2024
DRAWN BY: PFP CHECKED BY: BAM

SHEET TITLE:
FUTURE BUILDOUT
PLUMBING PLANS

DRAWING NUMBER:
P102
SHEET No: 17 of #