

**DAMMON**  
ENGINEERING, INC.

CHIEF ENGINEER  
EMMETT  
DAMMON, P.E.

CHIEF ARCHITECT  
ROBERT  
WILTSE

1095 FLORIDA AVENUE  
SLIDELL, LA. 70458  
OFFICE: 985-649-5832  
FAX: 985-641-5950

WEBSITE:  
WWW.DAMMONENGINEERING.COM

EMAIL:  
DAMMONENG@BELLSOUTH.NET

ARCHITECTURE  
ENGINEERING  
STUDIES  
PLANNING  
INVESTIGATION  
EXPERT WITNESS

ANDERSON  
MEMORY CARE  
RON DUHE  
4104 DAUPHINE ST.  
SLIDEL, LA

MWFRS  
NOTES

REV:

SCALE: AS NOTED

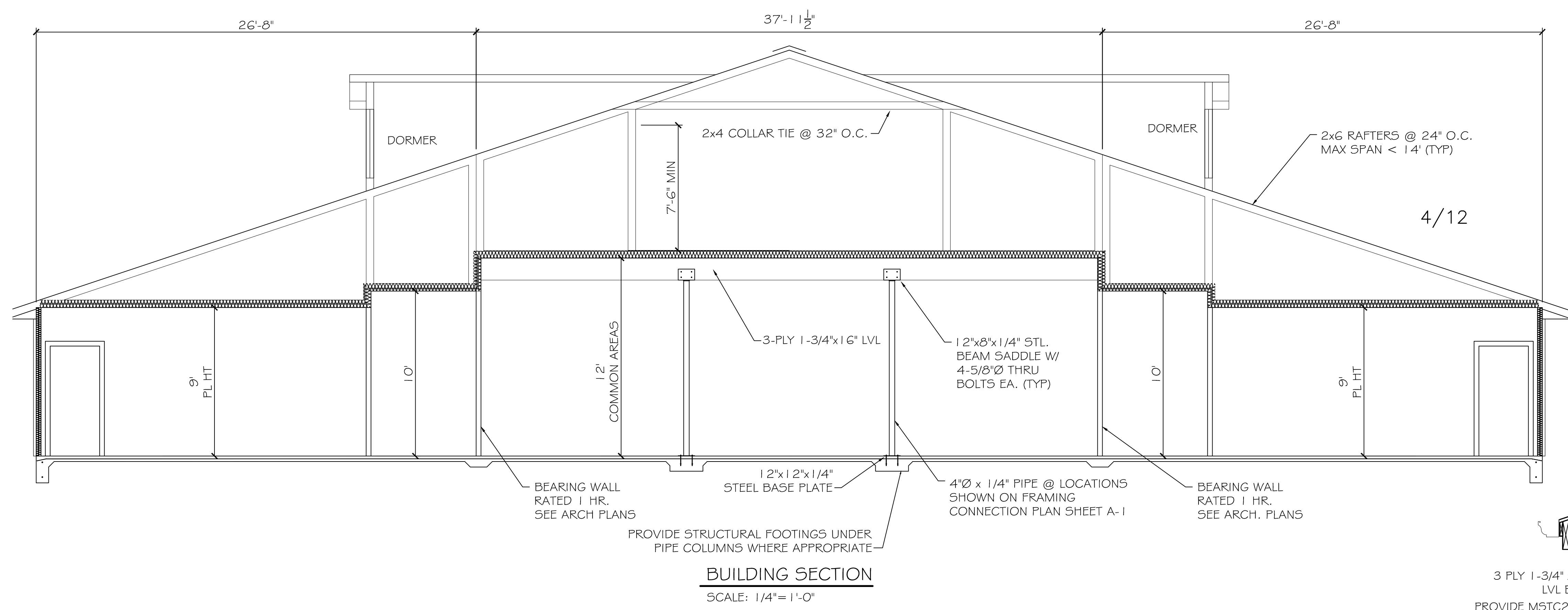
JOB#:

DATE: 07-15-10

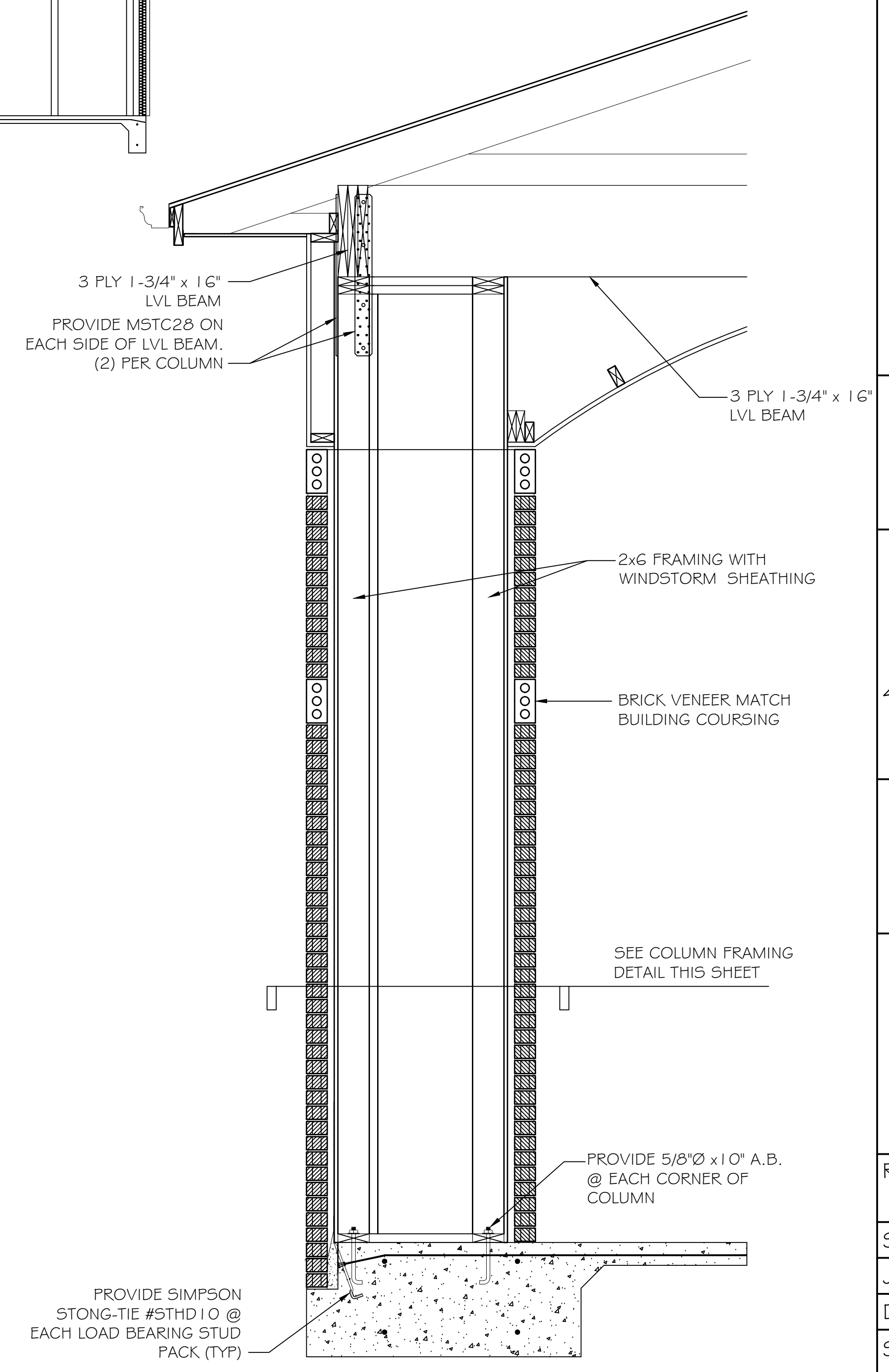
SHEET

**A-3**

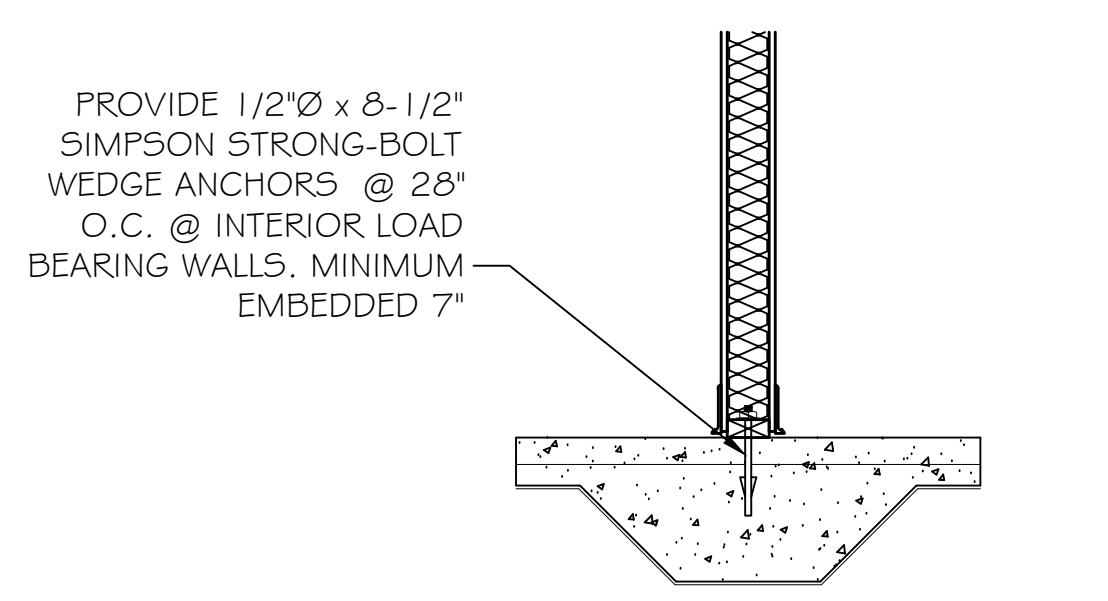
OF



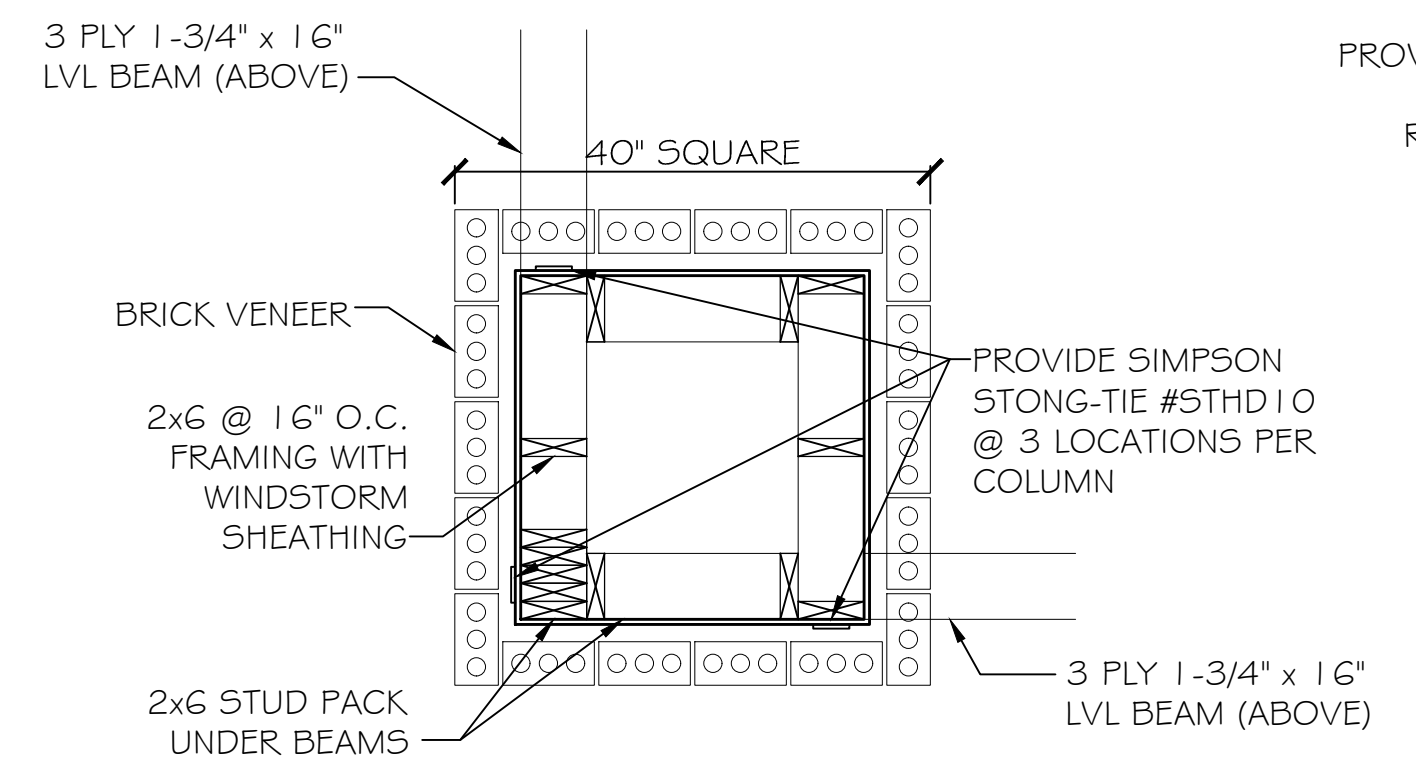
**BUILDING SECTION**  
SCALE: 1/4"=1'-0"



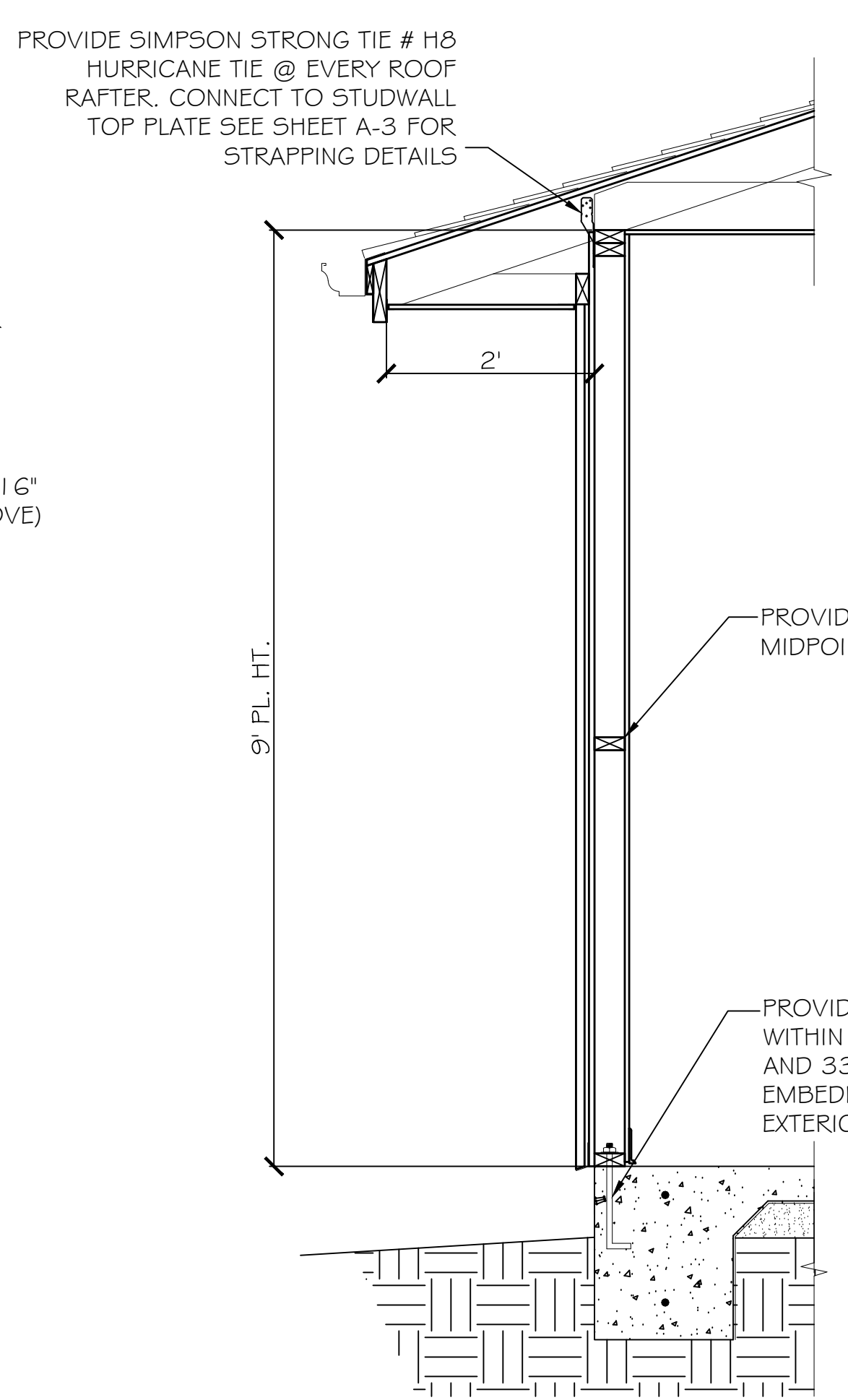
**PORTE COCHERE COLUMN SECTION**  
SCALE: 3/4"=1'-0"



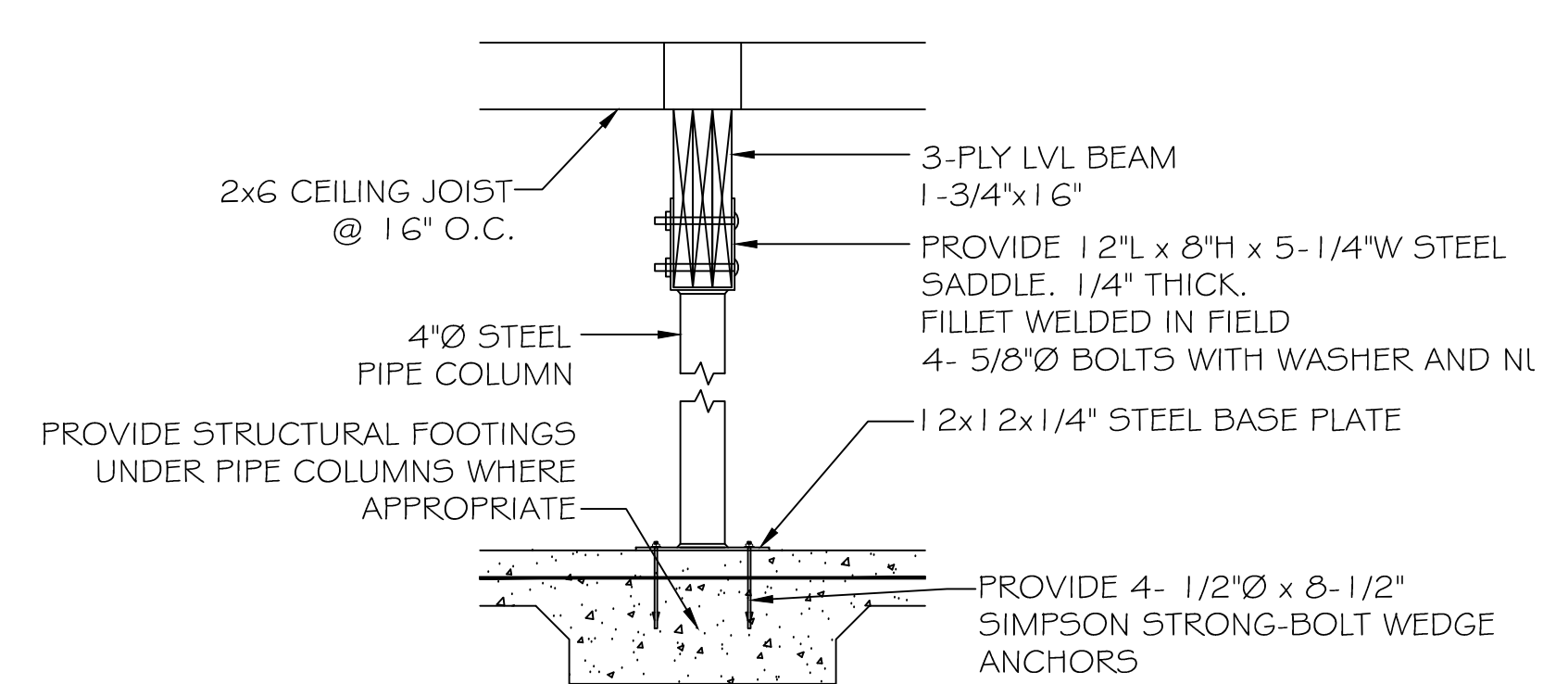
(MWFRS COMPONENTS ONLY SHOWN)  
**INTERIOR LOAD BEARING WALL SECTION**  
SCALE: 3/4"=1'-0"



**PORTE COCHERE COLUMN FRAMING DETAIL**  
SCALE: 3/4"=1'-0"



(MWFRS COMPONENTS ONLY SHOWN)  
**EXTERIOR WALL SECTION**  
SCALE: 3/4"=1'-0"



**INTERIOR LVL BEAM SADDLE DETAIL**  
SCALE: N.T.S.