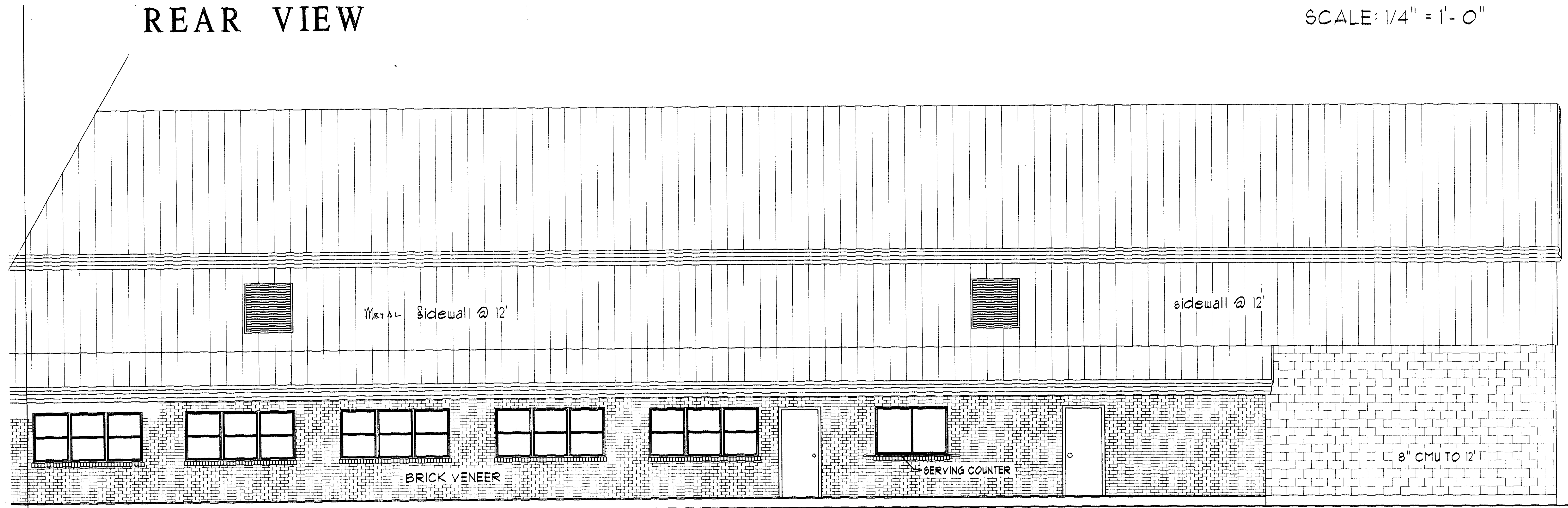


LEFT EXPANSION

RIGHT EXPANSION

REAR VIEW

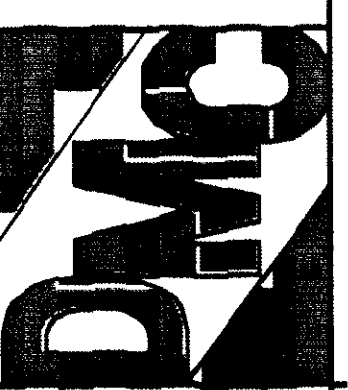
SCALE: 1/4" = 1'-0"



RIGHT VIEW

SCALE: 1/4" = 1'-0"

DON MCNATH CONSTRUCTION  
 2990 GAUSE BLVD EAST  
 SLIDELL LOUISIANA  
 504-641-4070



CHRIST EPISCOPAL SCHOOL  
 GYM EXPANSION  
 LA HWY #21 & CHRISTWOOD BLVD  
 COVINGTON, LOUISIANA

SQUARE FOOTAGE	
AREAS OF EXPANSION	
RIGHT EXPANSION	2,496
LEFT EXPANSION	2,496
REAR EXPANSION	1,820
TOTAL EXPANSION	6,812

DATE: 1 APRIL 00

JOB NO. 00-18

SHEET

8  
 OF SHEETS