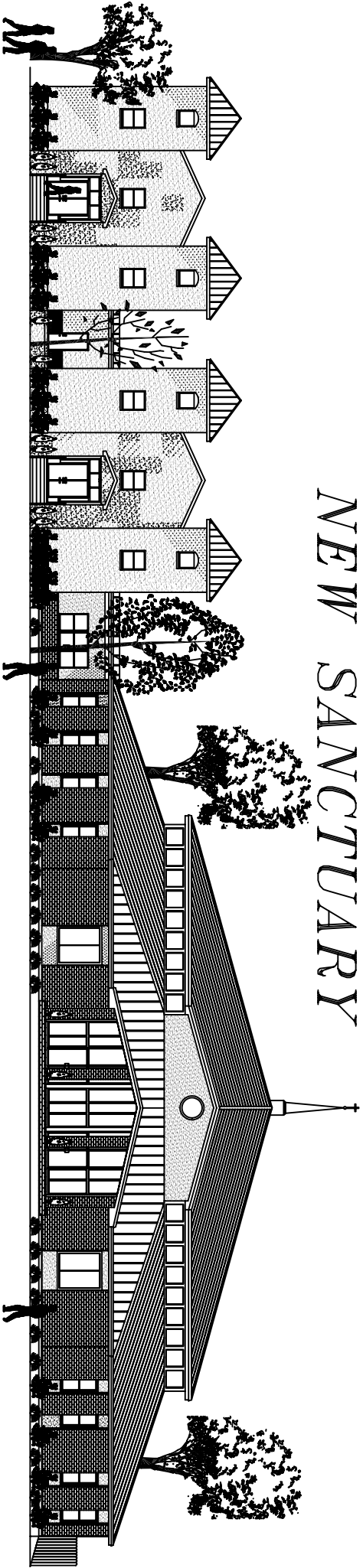


# STARLIGHT MISSIONARY BAPTIST CHURCH NEW SANCTUARY



## DRAWING INDEX

C-1	TREE LOCATION	A-7	SECTIONS AND DETAILS
C-2	SITE PLAN	A-8	ROOF PLAN
C-3	DRAINAGE PLAN	A-9	MEDIA DEVICES PLAN
C-4	PAVING AND DRAINAGE PLAN	A-10	LINE-OF-SIGHT SECTION
C-6	PARKING AND PAVING PLAN	A-11	FIREWALL PLANS
L-1	LANDSCAPE PLAN	M-1	FIRST FLOOR MECHANICAL
S-1	FOUNDATION PLAN	M-2	BALCONY MECHANICAL
P-1	FRAMING PLAN	M-3	MECHANICAL SCHEDULE
A-1	1ST FLOOR PLAN	P-1	PLUMBING PLAN
A-2	2ND FLOOR PLAN	P-2	PLUMBING RISER DIAGRAM
A-3	ELEVATIONS	E-1	LIGHTING PLAN
A-4	ELEVATIONS	E-2	POWER PLAN
A-5	REAR SECTION	E-3	BALCONY ELECTRICAL PLAN
A-6	FRONT SECTION		

## 2100 SECOND STREET SLIDELL, LOUISIANA

### INTERNATIONAL BUILDING CODE

OCCUPANCY: B-NONSEPARATED USE

AREA	9,539 SQ. FT.
ASSEMBLY (A-3)	3,748 SQ. FT.
BUSINESS (B)	1,438 SQ. FT.
BALCONY	
TOTAL	14,325 SQ. FT.

CONSTRUCTION TYPE: II B

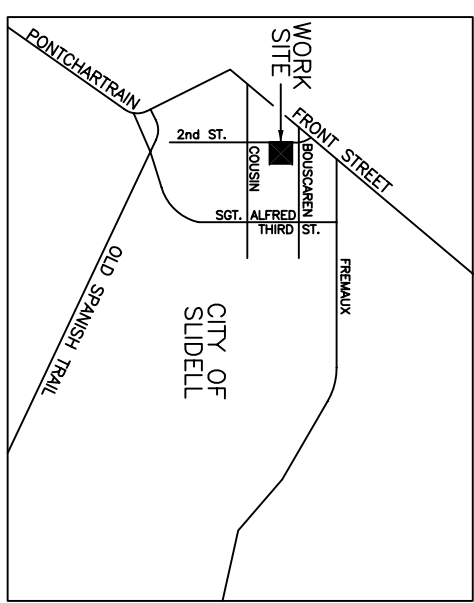
(TABLE 503) ALLOWABLE 23,000 SQ. FT. FOUR STORES

(TABLE 601) FIRE RESISTANCE RATINGS:  
STRUCTURAL MEMBERS - 2 HRS.  
ROOF CONSTRUCTION - 0 HRS.  
FLOOR CONSTRUCTION - 0 HRS.  
EXTERIOR WALLS - 0 HRS.  
EXTERIOR WALLS - 0 HRS.

(TABLE 602) FIRE RESISTANCE RATING FOR EXTERIOR WALLS - 0 HRS. - ALL EXTERIOR WALLS  
MAX. AREA OF WALL OPENINGS UNLIMITED - OPENINGS NOT PERMITTED UNLESS PROTECTED BY APPROVED THROUGHOUT.

(TABLE 704.8) MAX. AREA OF WALL OPENINGS UNLIMITED - OPENINGS NOT PERMITTED UNLESS PROTECTED BY APPROVED THROUGHOUT.

(IBC 1603.1.4) THIS BUILDING SHALL BE DESIGNED IN ACCORDANCE WITH IBC SECTION 1609 AS A PARTIALLY ENCLOSED BUILDING USING THE FOLLOWING INFORMATION:  
(IBC FIG. 1609) - BASIC WIND SPEED (3 SECOND GUSTS) - 130 MPH  
(TABLE 1604.5) - CATEGORY I BUILDING, I=1, IS=1, WM=1  
(IBC 1609.4) - EXPOSURE B  
- ACCORDANCE WITH IBC 1609.6



# DAMMON ENGINEERING, INC.

1095 FLORIDA AVENUE 985-649-5832 SLIDELL, LA. 70458  
DAMMONENGINEERING.COM

