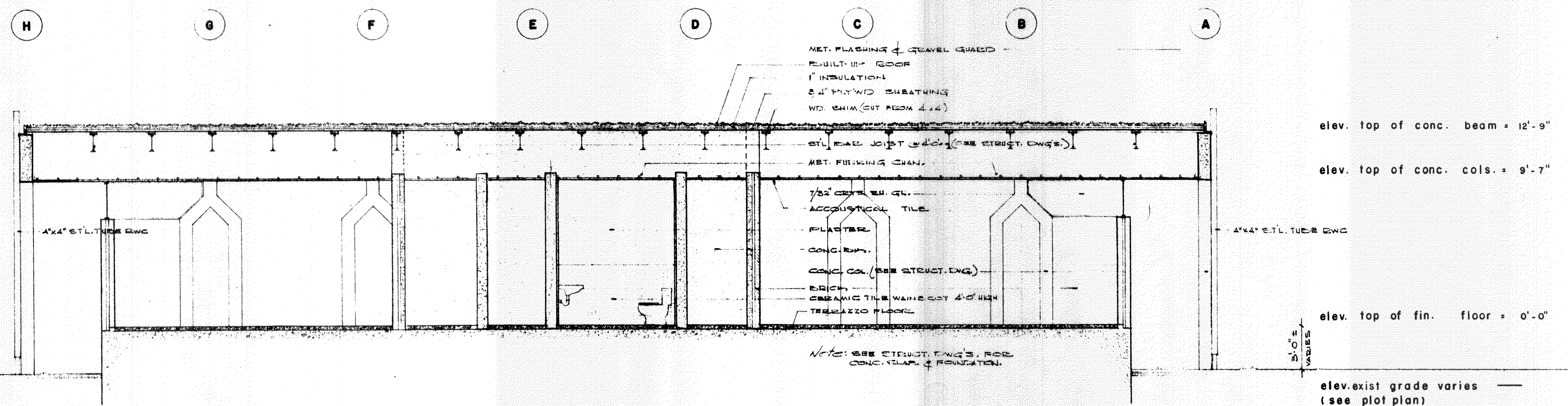


west elevation

1/8" = 1'-0"



section D D

1/4" = 1'-0"

our lady of lourdes catholic church and rectory
slidell, louisiana

lawrence and samuels architects metairie, louisiana

date	1-12-51
scale	AS NOTED
drawn	MB
checked	JHL
revised	

sheet no. **A-3**
7 of 45