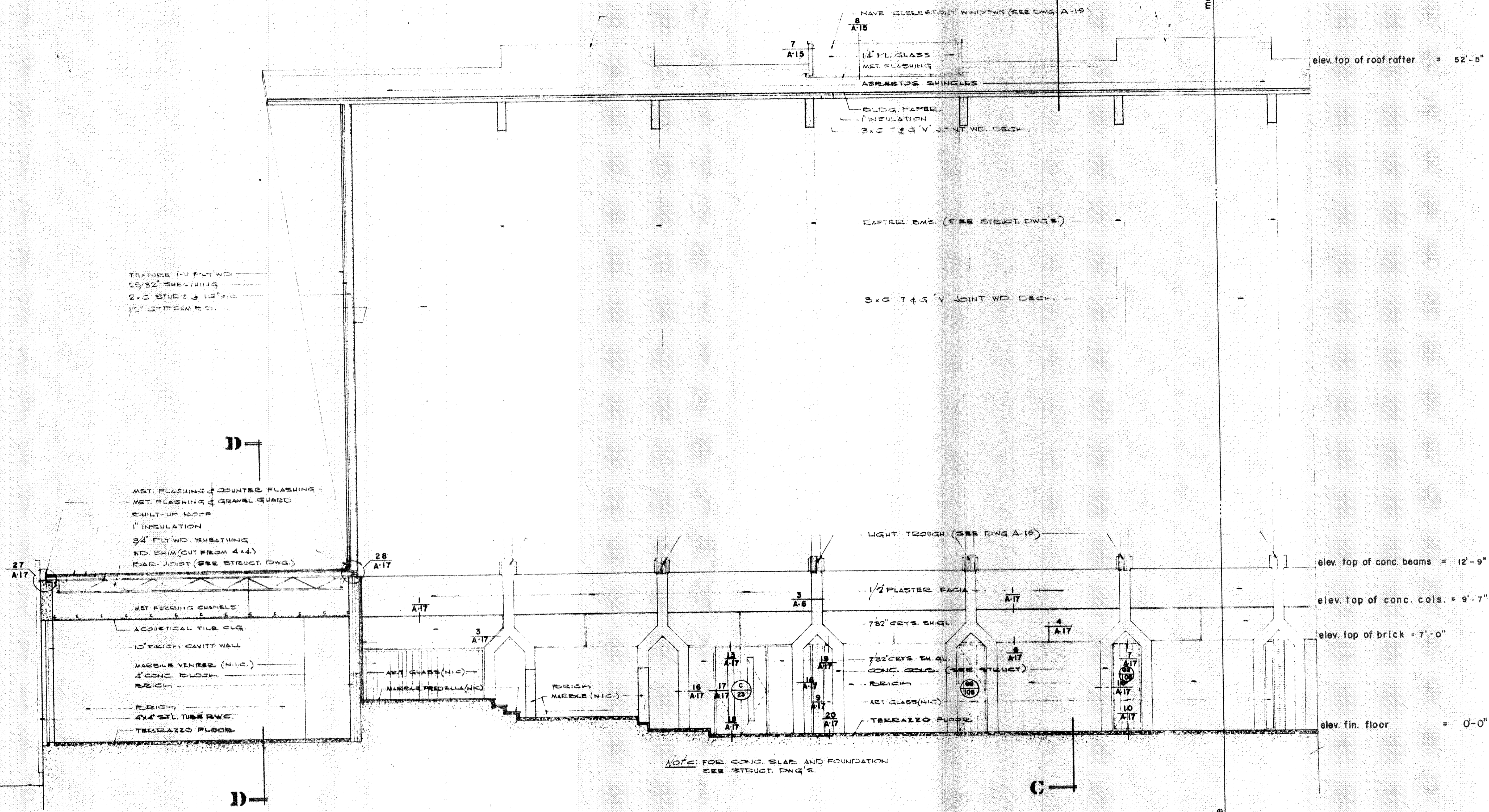


2 3 4 5 6 7 8 9 10

south north

match line



section AA (south portion)

1/4" = 1'-0"

elev. top of roof rafter = 52'-5"

elev. top of conc. beams = 12'-9"

elev. top of conc. cols. = 9'-7"

elev. top of brick = 7'-0"

elev. fin. floor = 0'-0"

Note: FOR CONC. SLAB AND FOUNDATION SEE STRUCT. DWG'S.

our lady of lourdes catholic church and rectory
slidell, louisiana

lawrence and saunders architects
metairie, louisiana

date 1-12-51

scale 1/4"=1'-0"

drawn G.M.E.

checked J.M.L.

revised

sheet no.

A-10

of 15