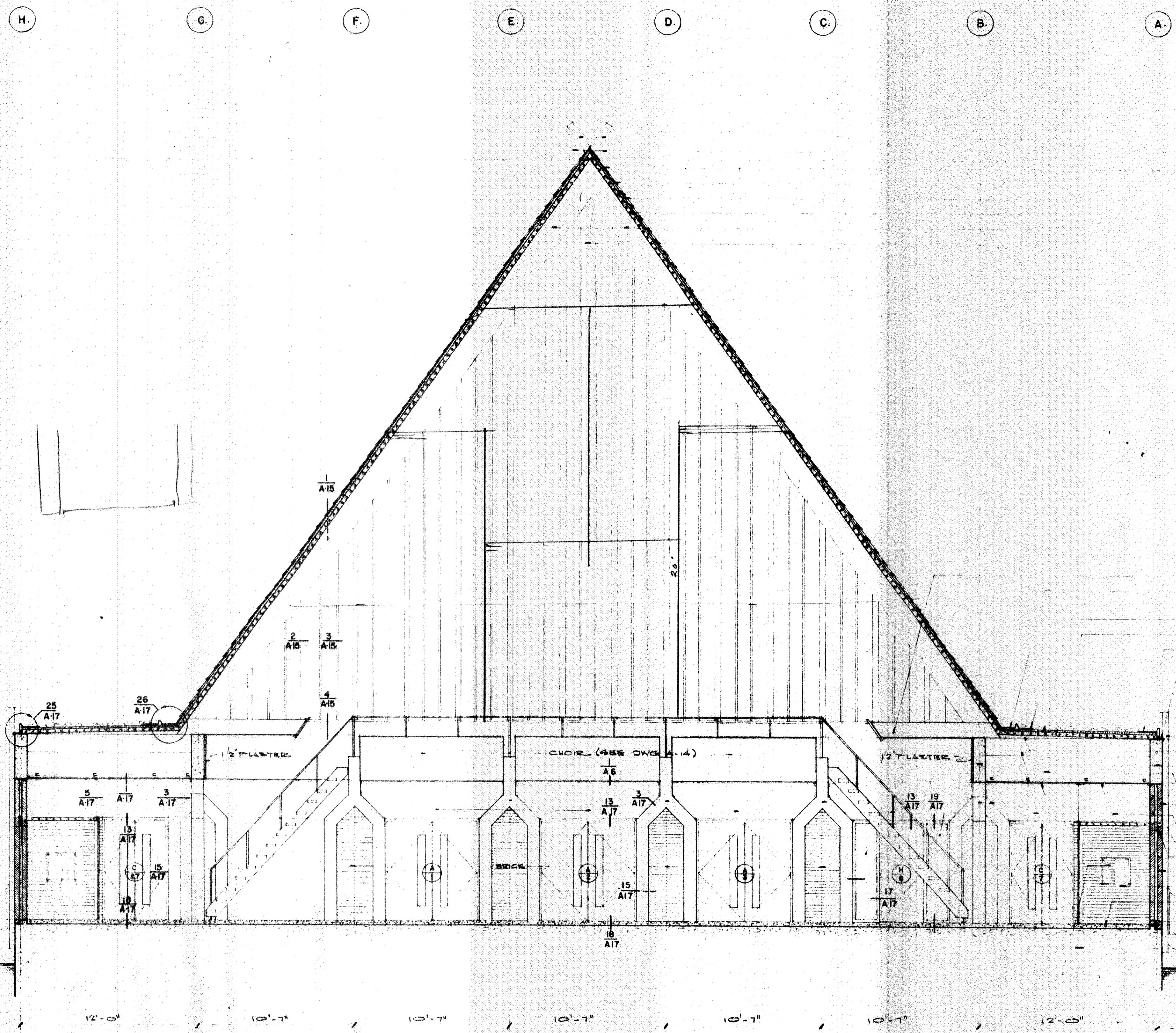


elev. top of roof rafters = 52'-5"

elev. top of conc. beams = 12'-9"
elev. top of conc. columns = 9'-7"
elev. top of brick walls = 7'-0"
elev. fin. floor = 0'-0"
elev. exist. grade varies (see plot plan)



METAL FLASHING
CLEARESTORY WINDOWS (SEE DWG. A-15)
ASBESTOS SHINGLES
BUDG. PAPER
1" RIGID INSULATION
2X2 1/2" JT. T&G WOOD DECK
LAMINATED WOOD RAFTERS
ART GUSSES (N.I.C.) ST'L. FRAME SEE DWG. A-15

WOOD LIGHT TROUGH (SEE DWG. A-15)
METAL FLASHING
BUILT UP ROOF
1" RIGID INSULATION
2X2 1/2" JT. T&G WOOD DECK
METAL GRAVEL GUARD
ALUMINUM FLASHING

1/4" METAL R.W.C.
WOOD SHIM
CONC. BEAMS (SEE STRUCT. DWGS)
DUCT SPACE
SUSPENDED PLASTER CLG.
CONC. COLS (SEE STRUCT. DWGS)
FIXED GLASS W/ALUM. FRAMES
CEMENT FILL
TERRAZZO
METAL FABRIC FLASHING
STAIR "A" (SEE DWG. A-16)
CONC. SLAB & FOUNDATION (SEE STRUCT. DWGS)

NOTE: MATERIALS ON OPP. SIDE OF BLDG. ARE SHOWN AS NOTED ON THIS SIDE OF BLDG.
PROFESSIONAL WINDOWS.

section B - B

scale 1/4" = 1'-0"

Our lady of lourdes catholic church and rectory
Shreveport, Louisiana

date 1-12-51
scale 1/4" = 1'-0"

sheet no. A-11

drawn by
checked by
approved by