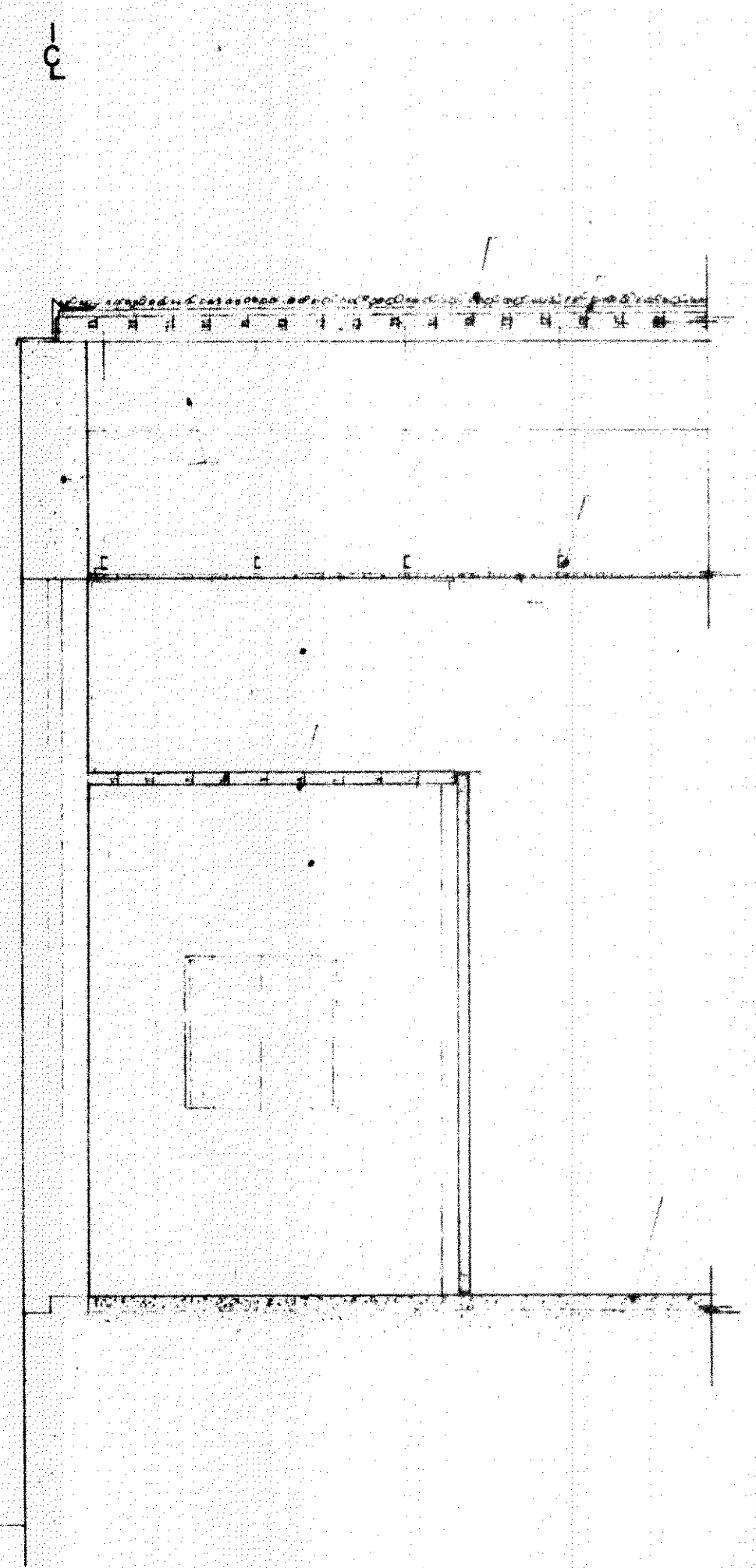


plan of confessionals

1/2" = 1'-0"



BUILT-UP FLOOR
INSULATION
2x6 W/ 1/2" WOOD BRICK

CONC. SLAB (SEE DETAIL)
BURSTING CHANNEL

MBT. LATH & PLASTER
7/8" CONC. CH. BR.
2x6 W/ 1/2" WOOD BRICK
WOOD NAILED

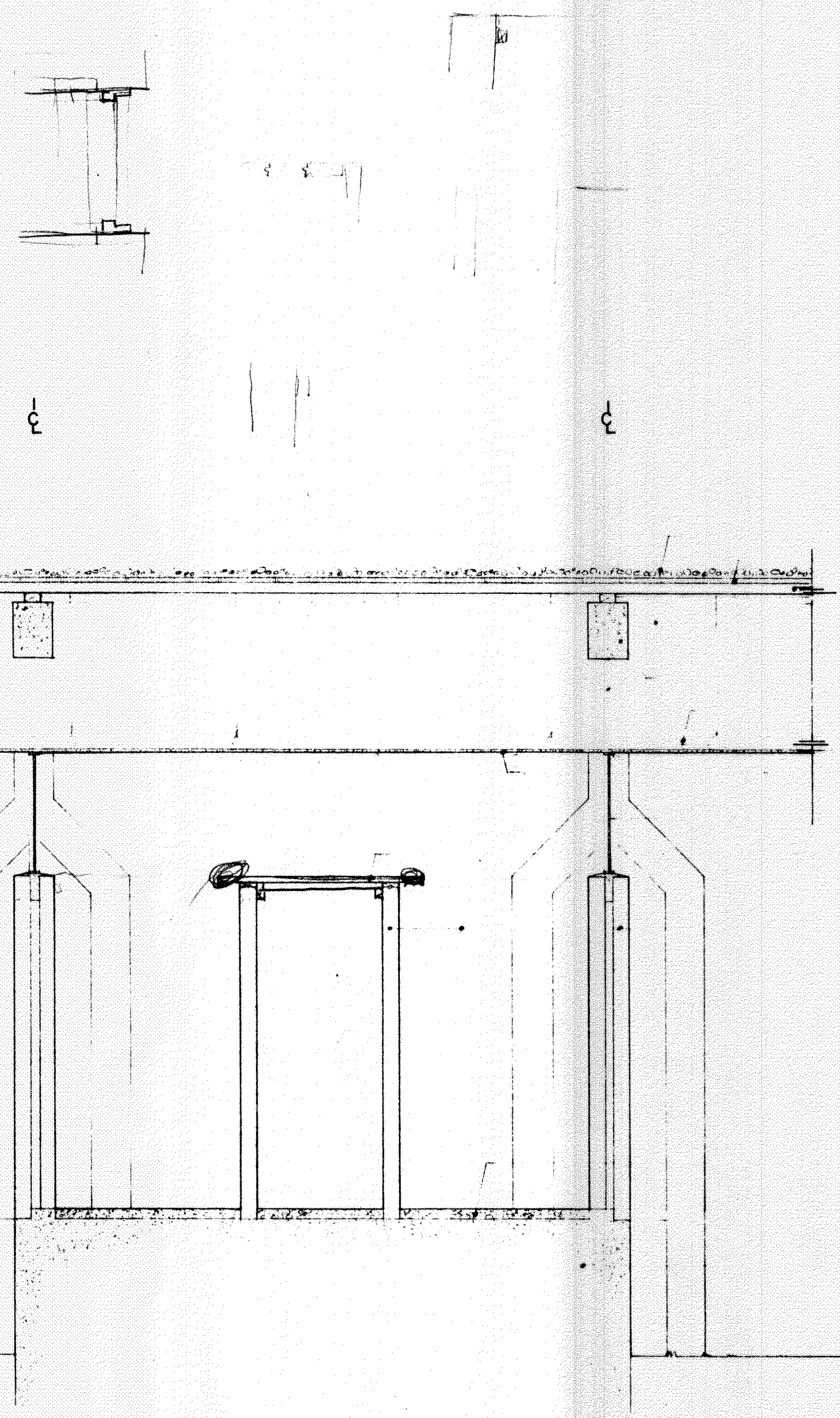
BRICK

TRUSS

AS NOTED SEE DETAIL DWG'S FOR CONC. SLAB & FOUNDATION.

section "a" "a"

1/2" = 1'-0"



BUILT-UP FLOOR
INSULATION
2x6 W/ 1/2" WOOD BRICK

elev. top of conc. beam 12'-9"

CONC. SLAB (SEE DETAIL)
BURSTING CHANNEL

MBT. LATH & PLASTER
7/8" CONC. CH. BR.
2x6 W/ 1/2" WOOD BRICK

elev. top of conc. col. 9'-7"

top of brick 7'-0"

BRICK

TRUSS

fin. floor elev. 0'-0"

AS NOTED SEE DETAIL DWG'S FOR CONC. SLAB & FOUNDATION.

section "b" "b"

1/2" = 1'-0"

our lady of lourdes catholic church and rectory
slidell, louisiana

lawrence and saunders architects
metairie, louisiana

date	1-12-61
scale	AS NOTED
drawn	JHL
checked	JHL
revised	

sheet no. **A-13**
12 of 15