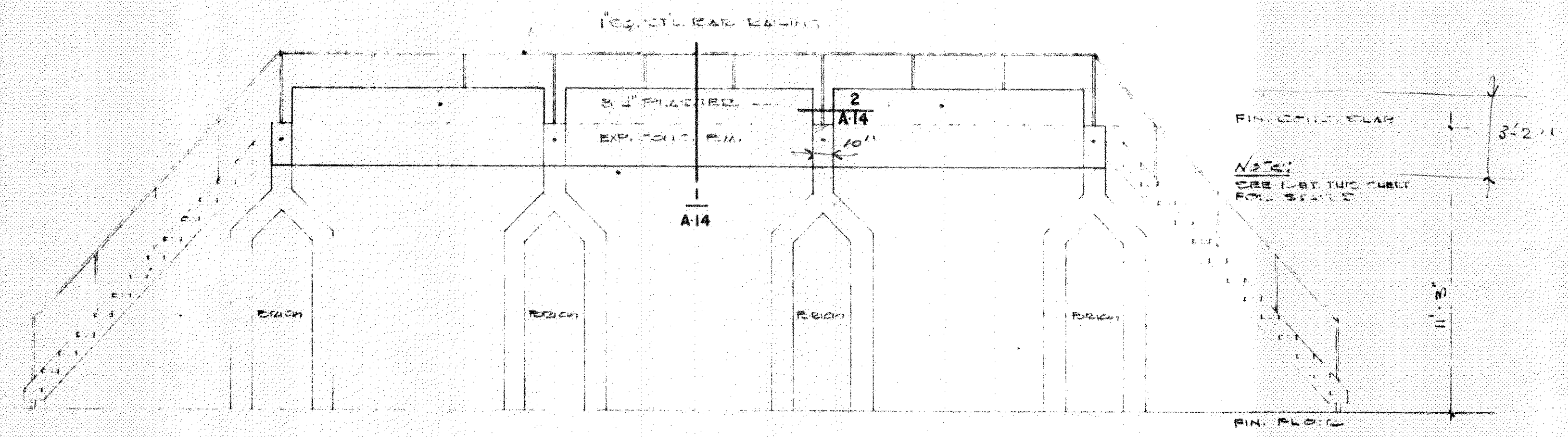


choir plan

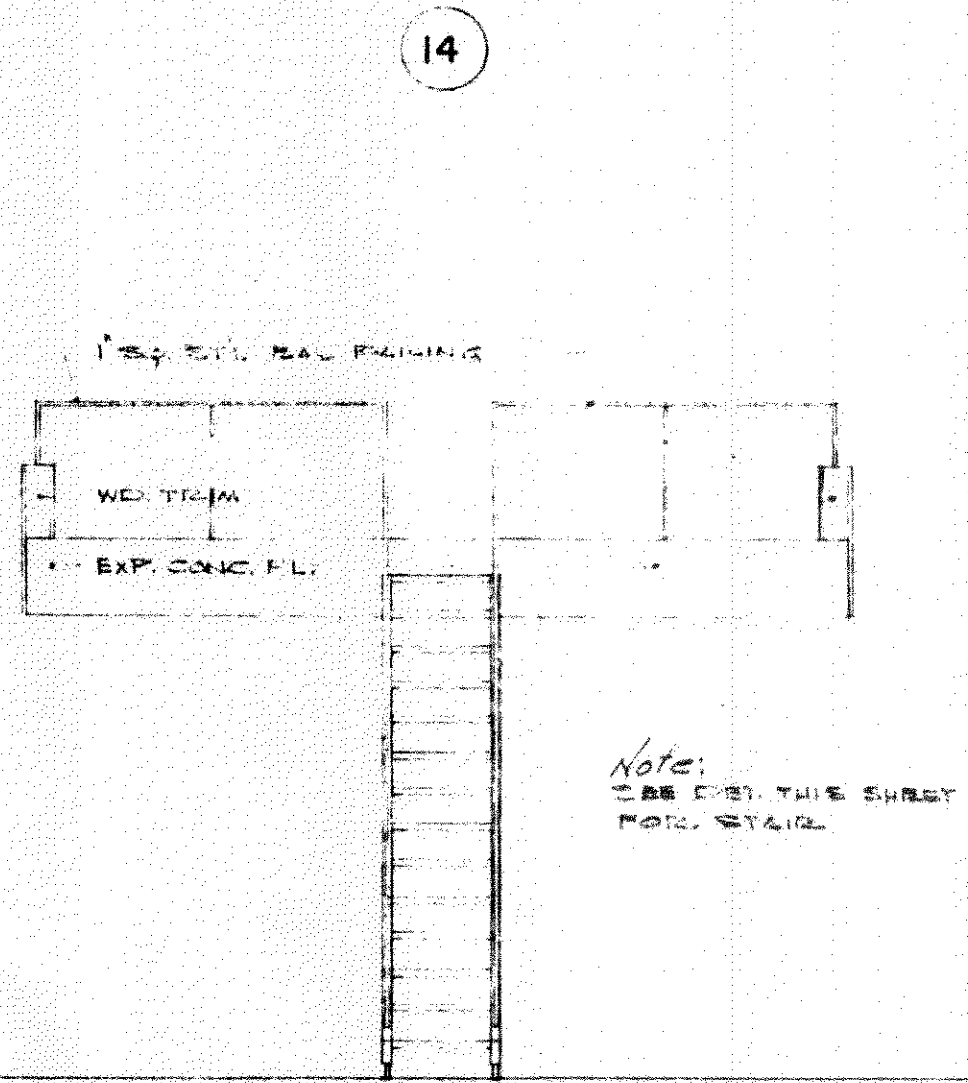
1/4" = 1'-0"



elevation

opposite side similar

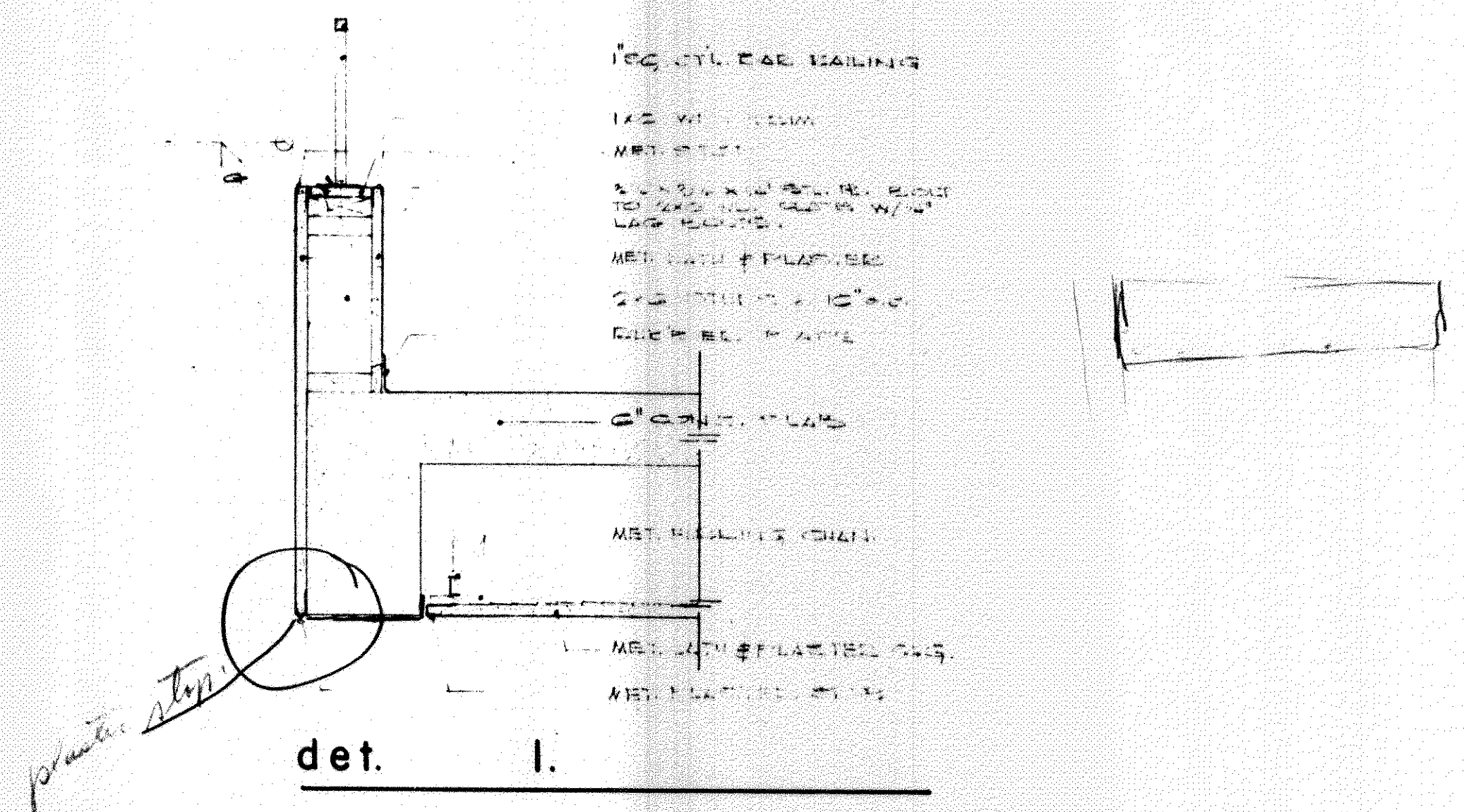
1/4" = 1'-0"



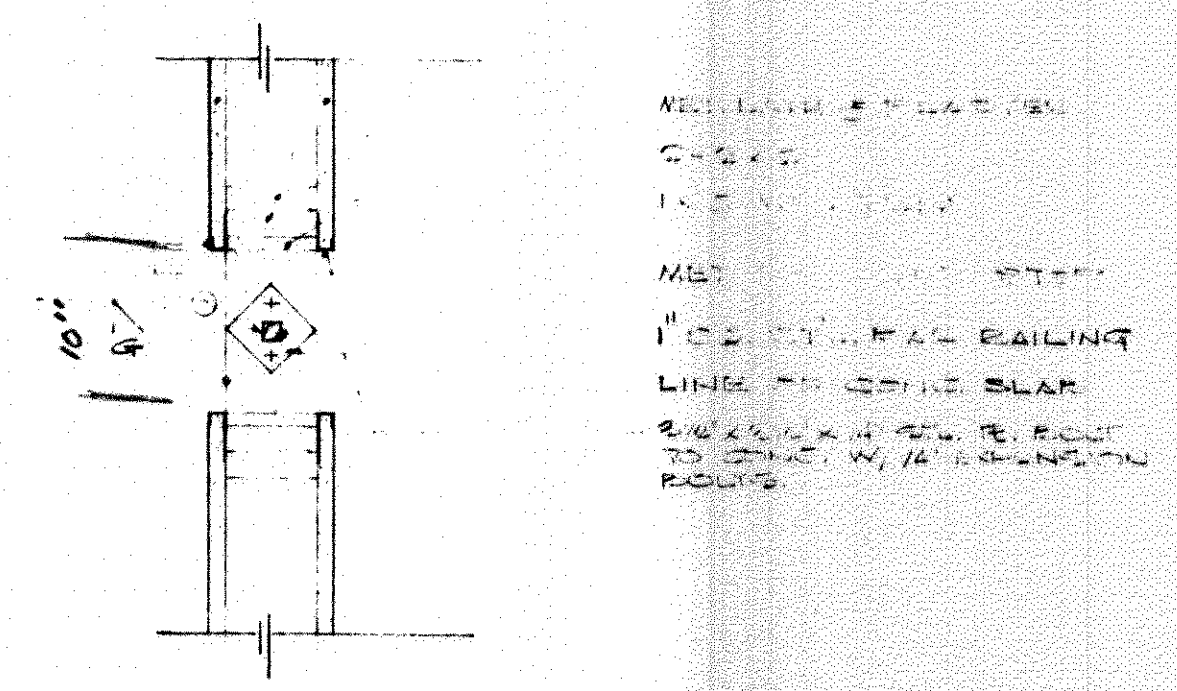
elevation

opposite side similar

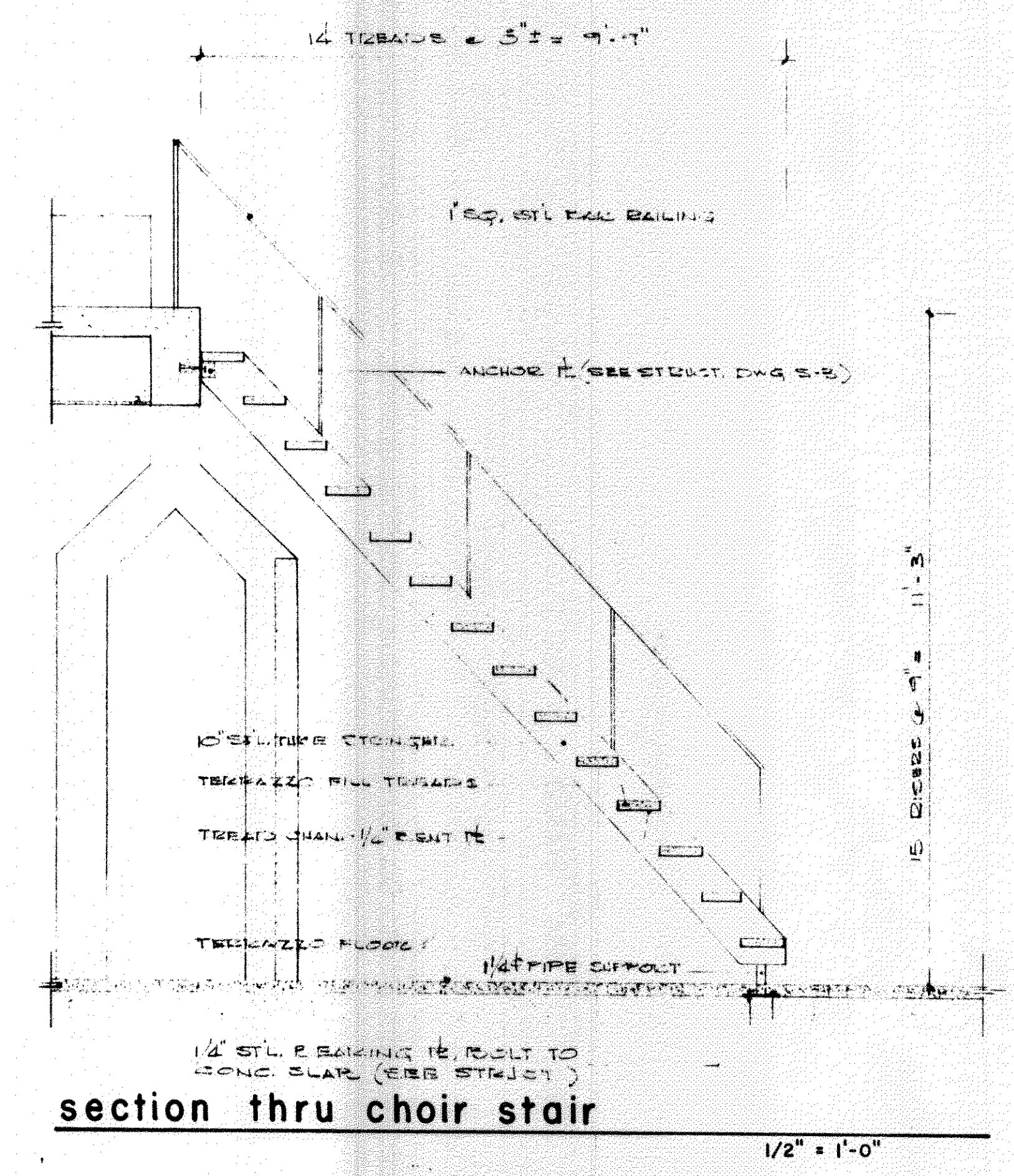
1/4" = 1'-0"



det. 1.

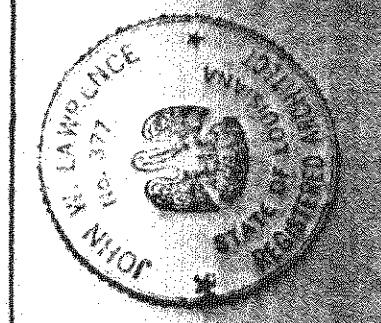


det. 2.



section thru choir stair

1/2" = 1'-0"



our lady of lourdes catholic church and rectory
slidell, louisiana

lawrence and summers architects
metairie, louisiana

date	1-12-51
scale	AS NOTED
drawn	AKK
checked	JWL
revised	

sheet no. **A-14**
13 of 25