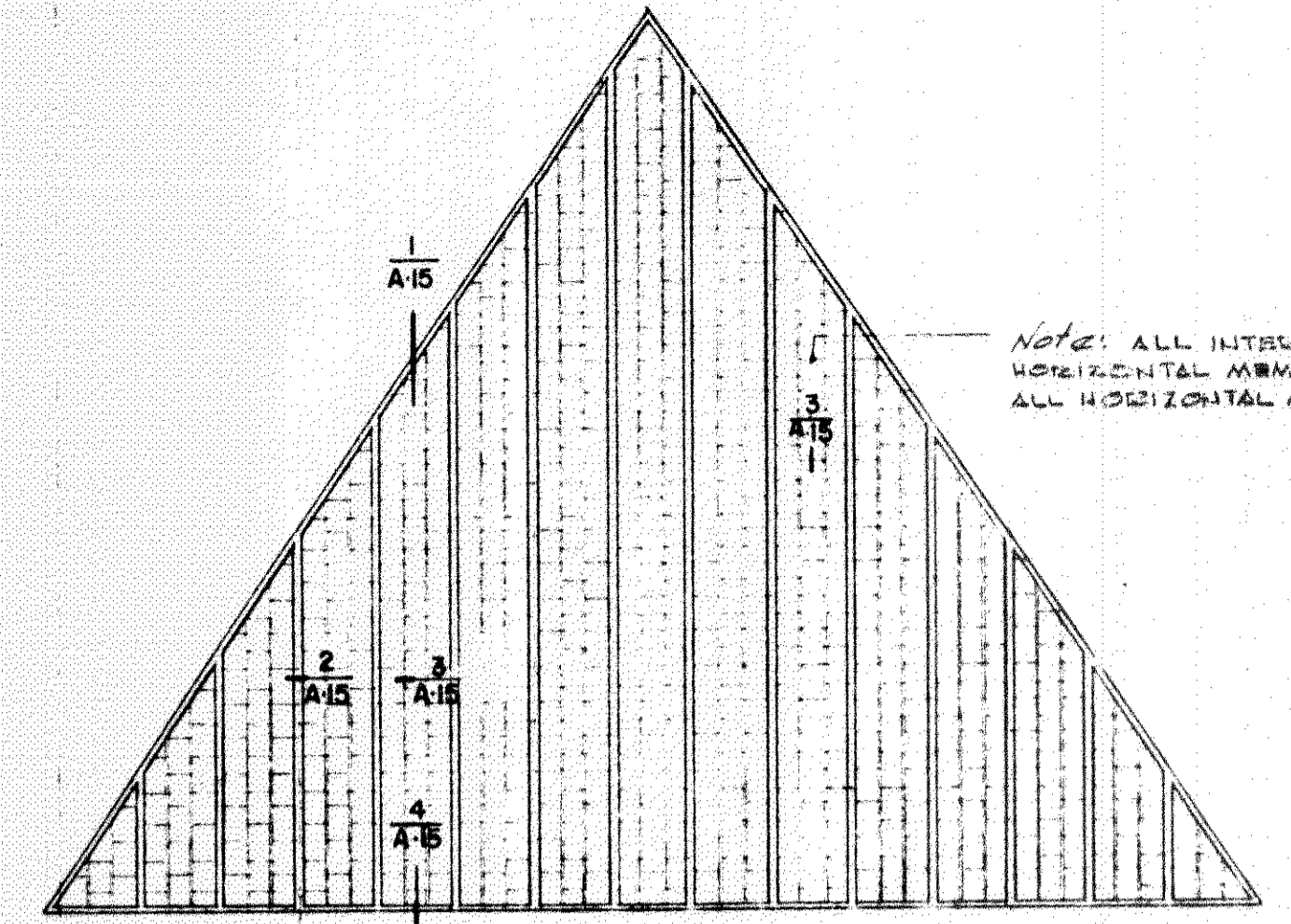
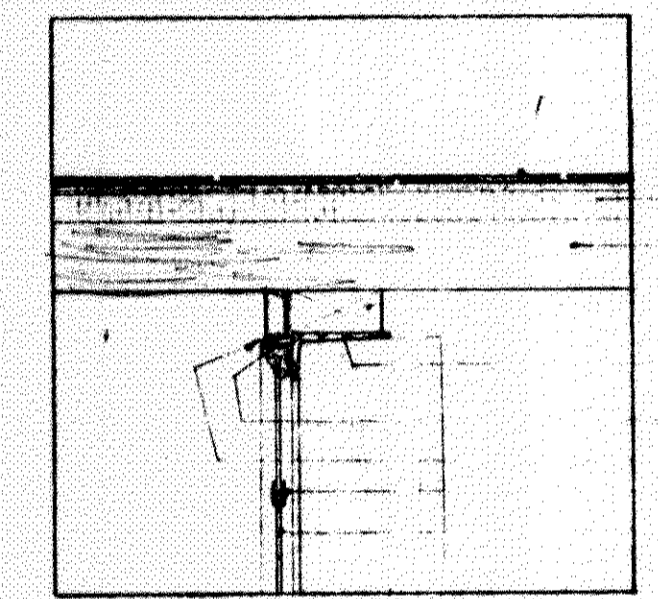


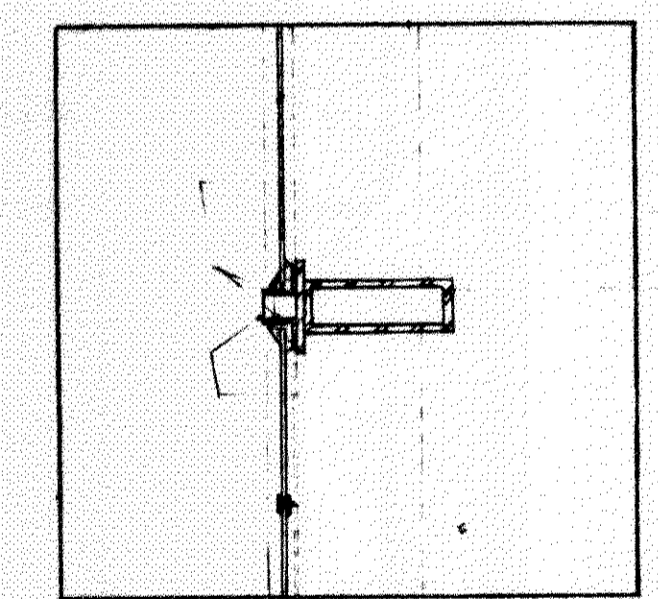
G F E D C B



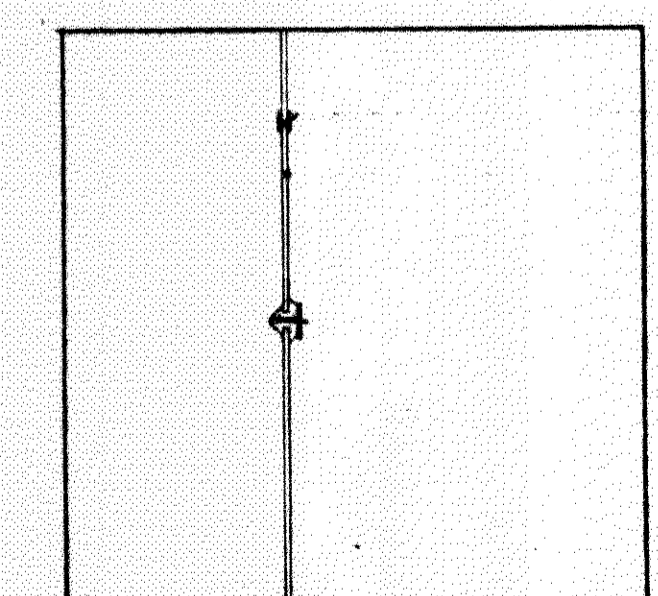
elevation north gable
1/8" = 1'-0"



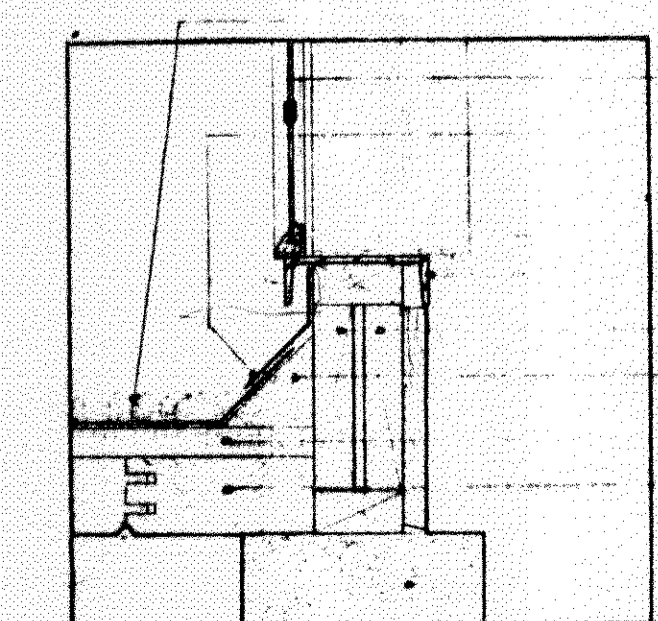
- ASBESTOS SHINGLES
- 1" INSULATION
- 2" T&G WD. DECK
- 2x4 WD. BLOCK
- 3x4 STL. ANGLE
- 1/4" x 1/4" STL. ANGLE
- MET. FLASHING
- LEAD CAMB
- ART GLASS



- ART GLASS
- 1/4" x 1/4" STEEL TEE
- 6x2 STL. TUBE
- ALUM. PANEL
- LEAD CAMB

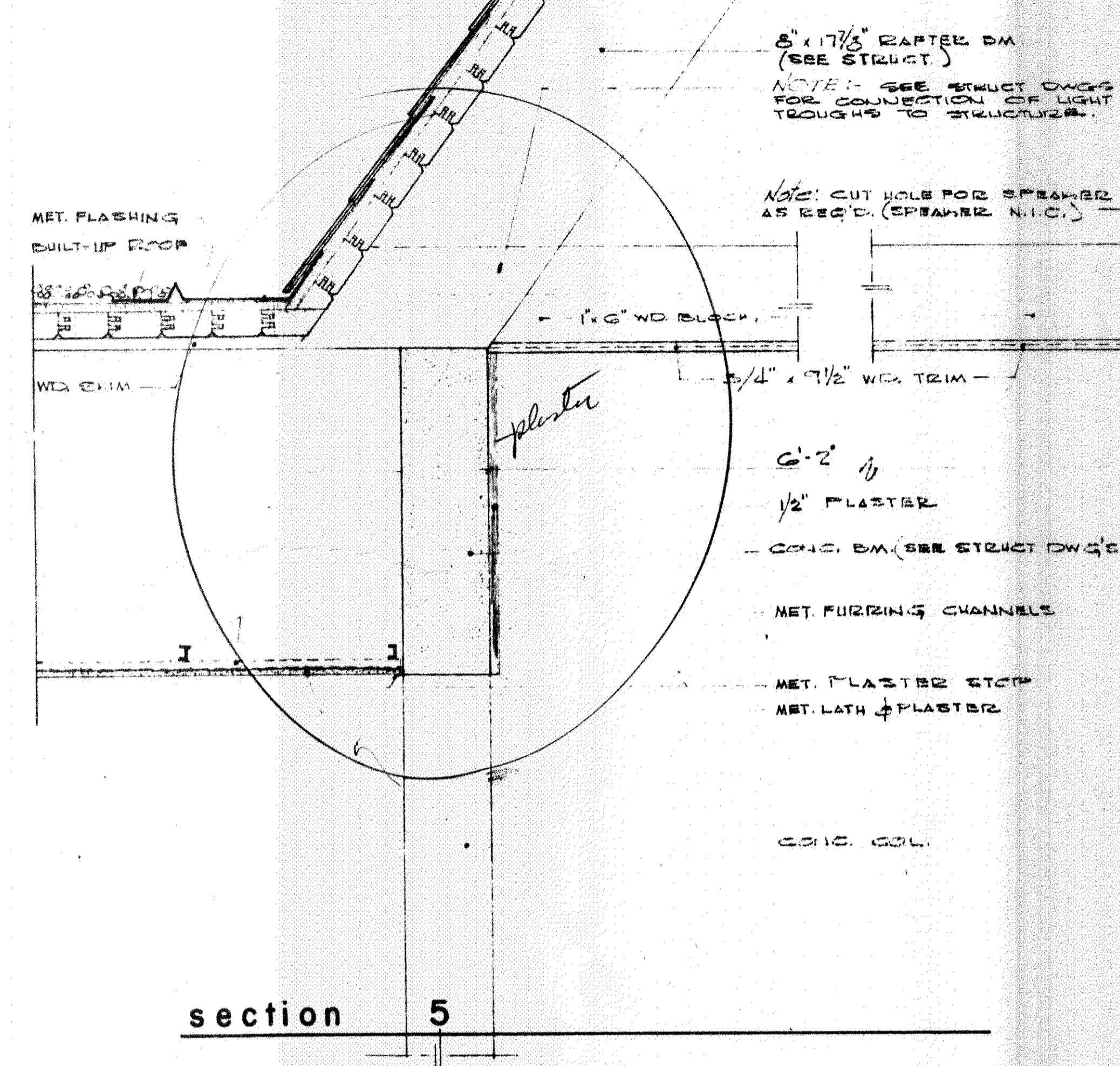


- LEAD CAMB
- ART GLASS
- 1/4" x 1/4" STL. TEE



- BUILT-UP ROOF
- ART GLASS
- MET. FLASHING
- 1/4" x 1/4" STL. ANGLE
- 2x4s
- WD. CANT STRIP
- 1" INSULATION
- 2" T&G WD. DECK
- CONC. F.M.

- ASBESTOS SHINGLES
- BLDG. PAPER
- 1" INSULATION
- 3x6 T&G WD. DECK

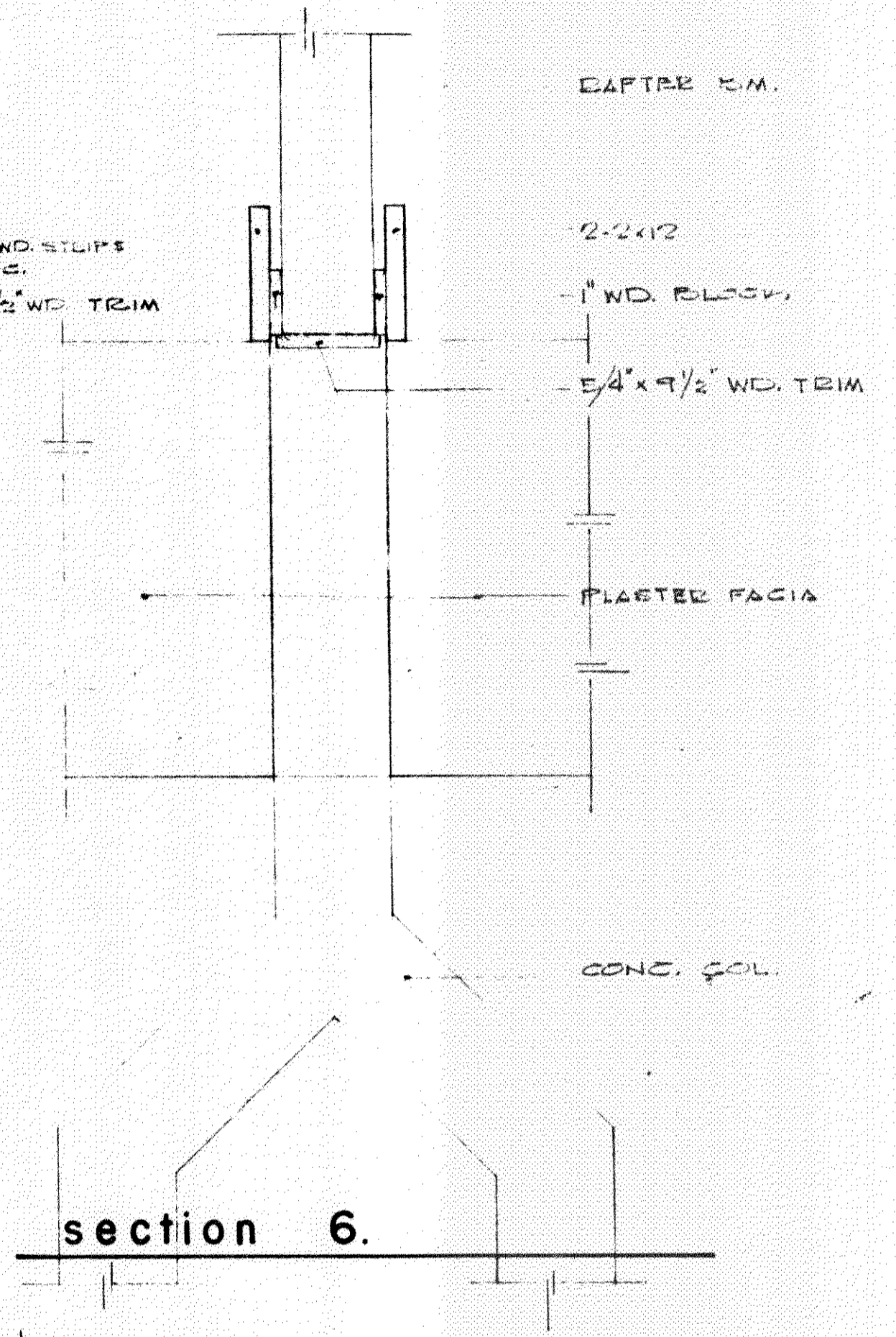


section 5
details of light trough -- sanctuary

6" x 17/8" RAFTER DM (SEE STRUCT)
NOTE: SEE STRUCT DWGS FOR CONNECTION OF LIGHT TROUGH TO STRUCTURE.

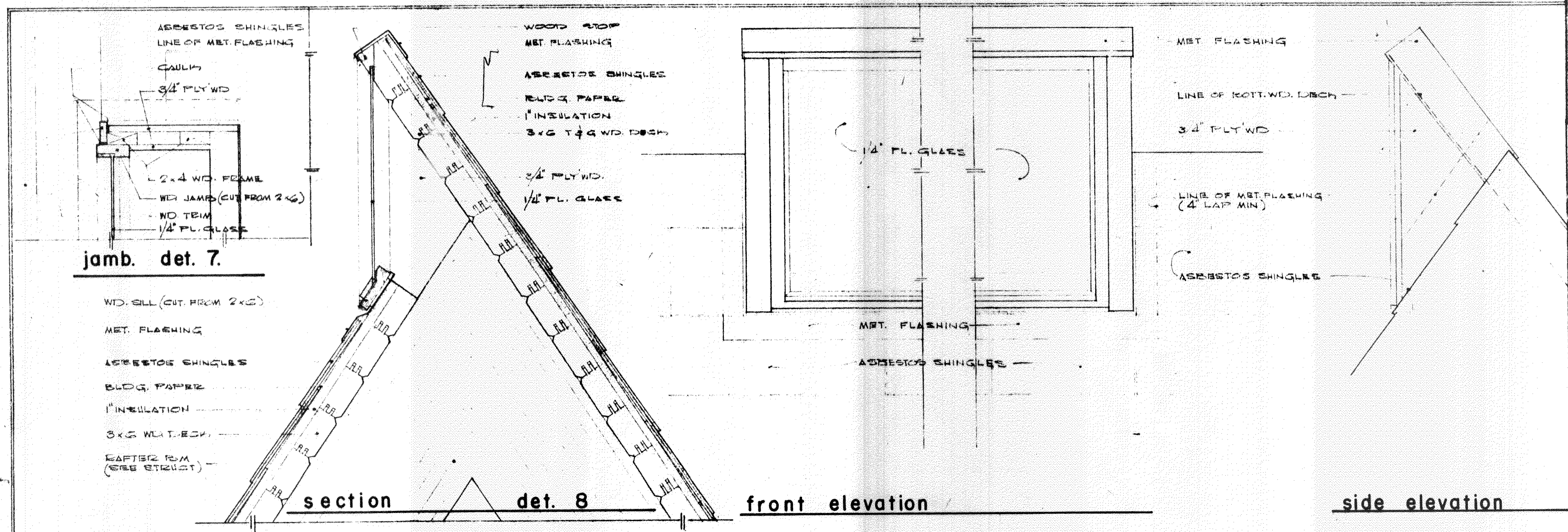
NOTE: CUT HOLE FOR SPEAKER AS REQ'D. (SPEAKER N.I.C.)

- 6x2
- 1/2" PLASTER
- CONC. DM (SEE STRUCT DWGS)
- MET. FURRING CHANNELS
- MET. PLASTER STOP
- MET. LATH & PLASTER
- CONC. SOL.



section 6
1" = 1'-0"

- RAFTER R.M.
- 2x4x12
- 1" WD. BLOCK
- 5/4" x 9/2" WD. TRIM
- PLASTER FACIA
- CONC. SOL.



section, elevations, and details nave clerestory window
1 1/2" = 1'-0"

jamb. det. 7

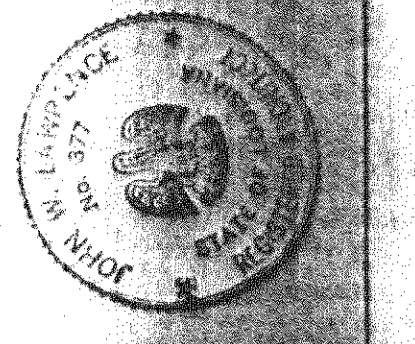
- WD. SILL (CUT FROM 2x6)
- MET. FLASHING
- ASBESTOS SHINGLES
- BLDG. PAPER
- 1" INSULATION
- 3x6 WD. DECK
- RAFTER R.M. (SEE STRUCT)

section det. 8

front elevation

side elevation

Note: SEE STRUCT DWGS FOR WELDING SYMBOLS.



our lady of lourdes catholic church and rectory
slidell, louisiana
lawrence and sanders architects
metairie, louisiana

sheet no.	A-15
date	1-12-61
scale	AS NOTED
drawn	AKK
checked	J.M.
revised	