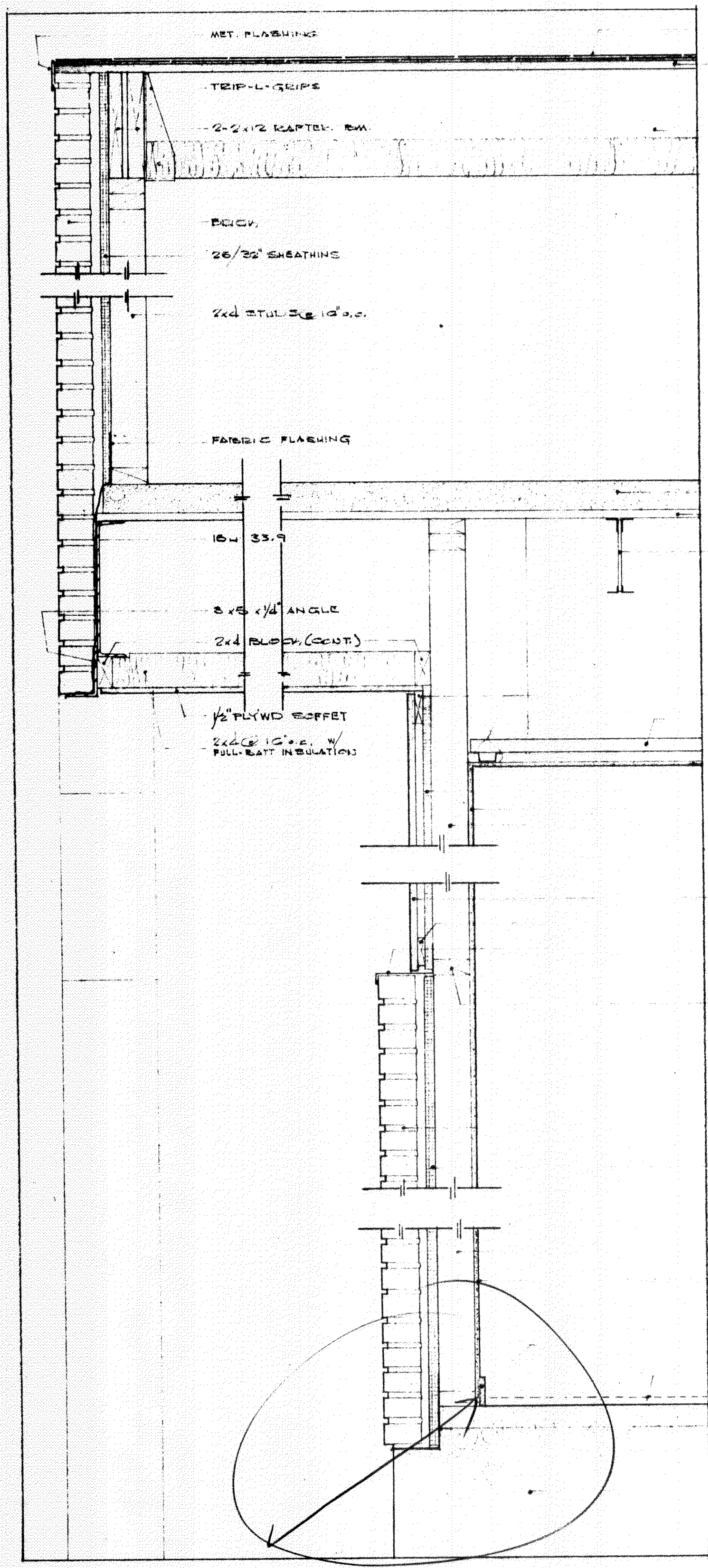
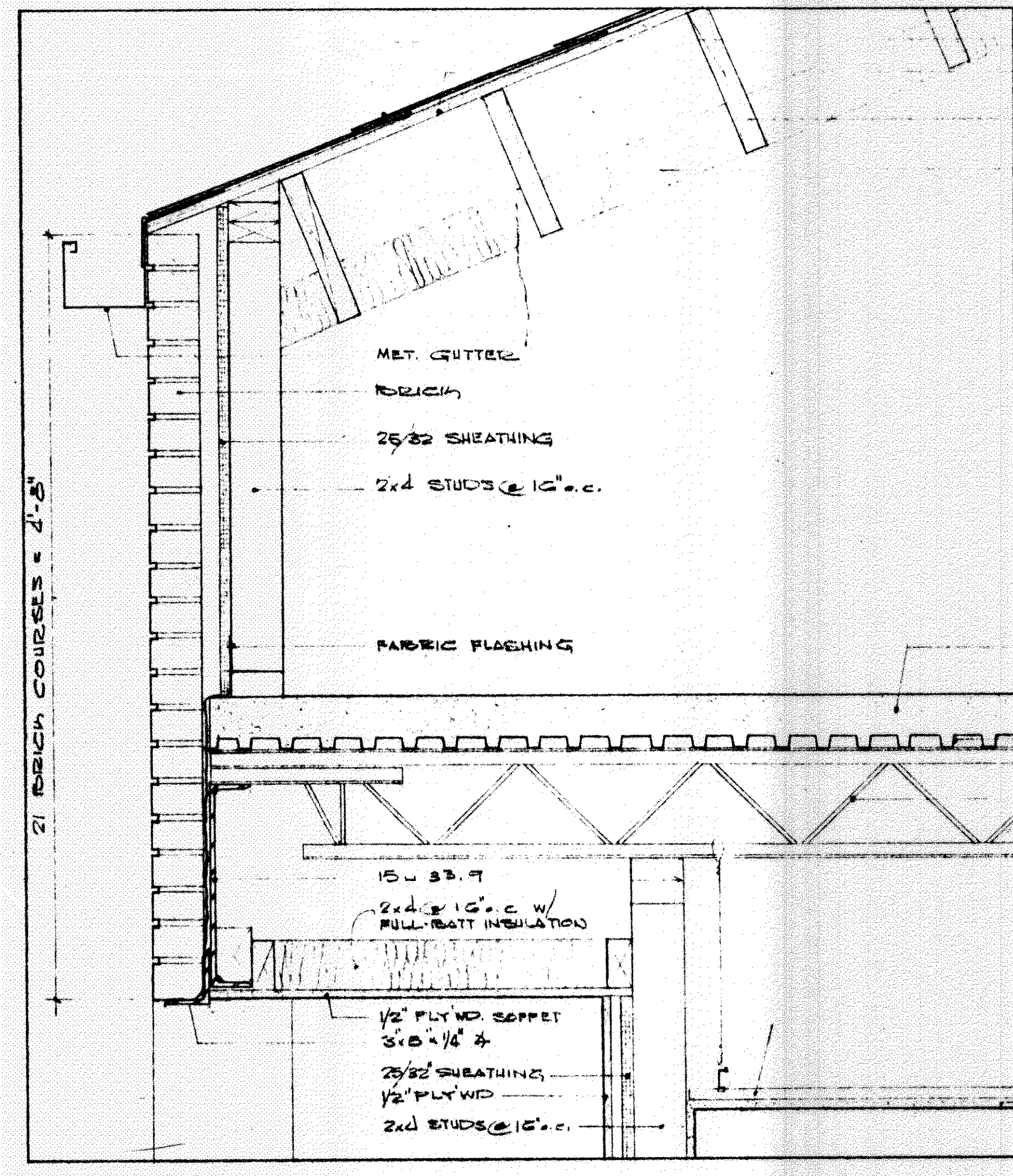


our lady of lourdes catholic church and rectory
slidell, louisiana

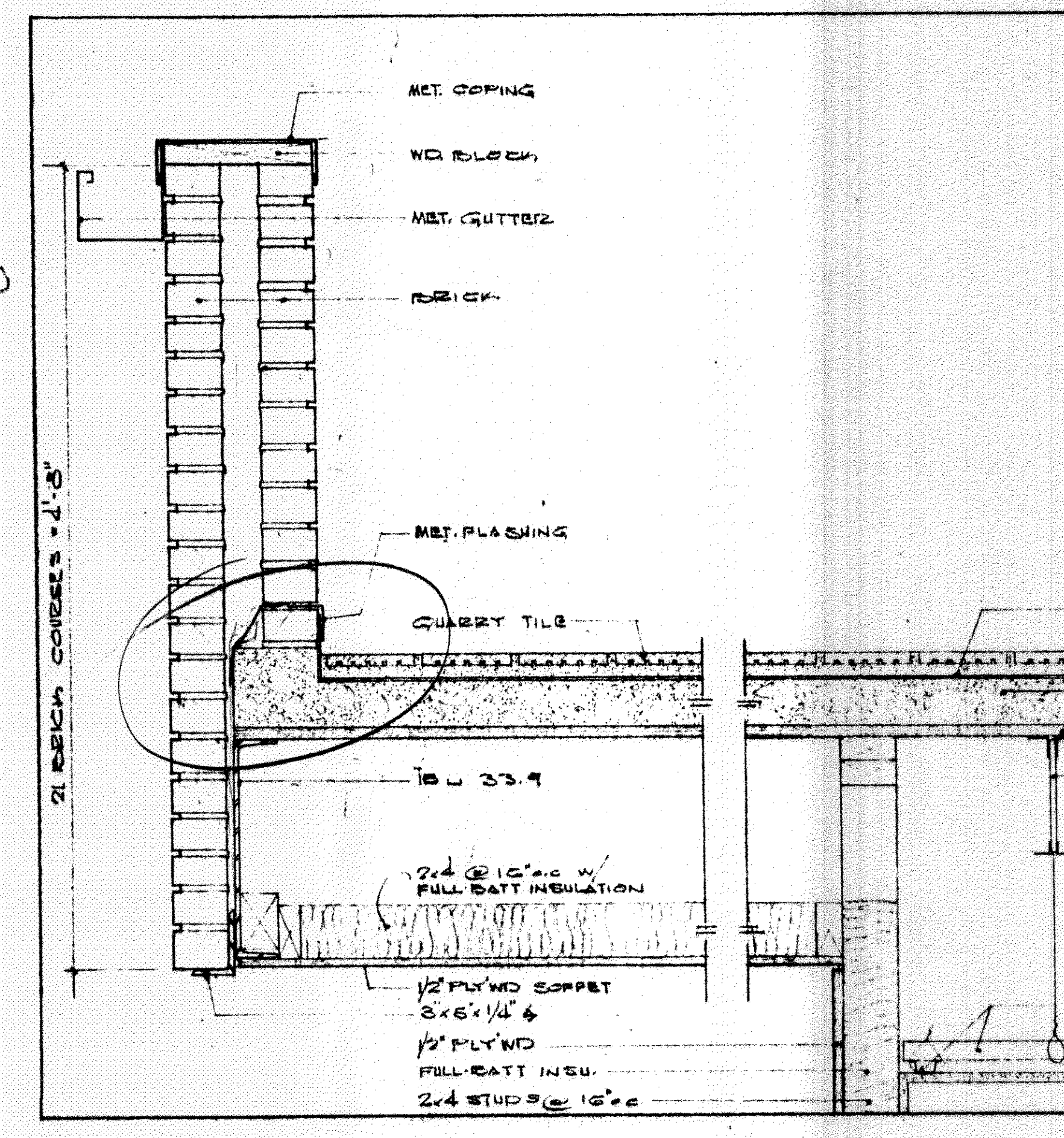
Lorraine and Associates, Inc. Architects, Louisiana



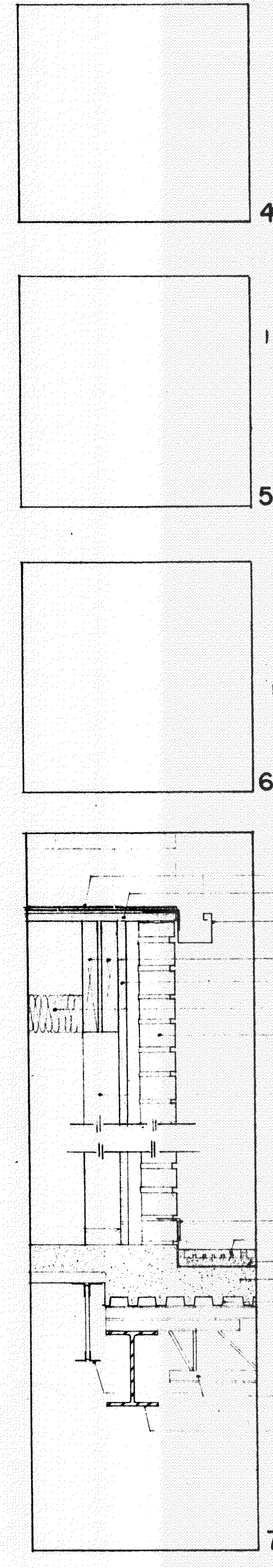
- ASBESTOS SHINGLES
- 3/4" PLYWD SHEATHING
- 2x12 JOIST @ 16" o.c.
- FULL-BATT INSULATION
- 4" CONC. SLAB
- MET. DECK
- BAR JOIST
- 1/2" PLYWD SOFFET
- PURRING CHANNEL
- 1/2" GYP. SOFF. B.D.
- 25/32 SHEATHING
- 1/2" GYP. SOFF. B.D.
- 2x4 STUDS @ 16"
- 1/2" PLYWD
- 1x2 PURRING
- MET. FLASHING
- 2x4 FLASHING (CONT. BETWEEN STUDS)
- BRICK
- 25/32 SHEATHING
- 2x4 STUDS @ 16" o.c.
- 1/2" GYP. SOFF. B.D.
- WD. BASE
- CANTY (BY OWNER)
- FABRIC FLASHING
- CONC. FOUNDATION (SEE STRUCT. ENGR'S)



- ASBESTOS SHINGLES
- 3/4" PLYWD SHEATHING
- 2x12 JOIST @ 16" o.c.
- FULL-BATT INSULATION
- 4" CONC. SLAB
- MET. DECK
- BAR JOIST
- MET. PURRING CHAN.
- 1/2" GYP. SOFF. B.D.



- MET. PURRING CHAN.
- 1/2" GYP. SOFF. B.D.



- ASBESTOS SHINGLES
- 3/4" PLYWD SHEATHING
- MET. GUTTER
- 2-2x12 WD. RAFT.
- 25/32 SHEATHING
- FULL-BATT INSULA.
- BRICK
- 2x4 STUDS @ 16" o.c.
- MET. FLASHING
- QUARRY TILE
- MET. PAN
- 4" CONC. SLAB
- MET. DECK
- MET. FLASHING
- QUARRY TILE
- CONC. SLAB
- MET. DECK
- BAR JOIST
- MET. PURRING CHAN.
- 2x4 BTL RAFT.

sheet no. **A-26**

date 1-12-61

scale 1/2" = 1'-0"

drawn *[Signature]*

checked *[Signature]*

revised