

DAMMON
ENGINEERING, INC.

EMMETT
DAMMON

ARCHITECT
ROBERT
WILTSE

1095 FLORIDA AVENUE
SLIDELL, LA. 70458
985-649-5832

WEBSITE:
WWW.DAMMONENGINEERING.COM

EMAIL:
DAMMONENG@BELLSOUTH.NET

ARCHITECTURE
ENGINEERING
STUDIES
PLANNING
INVESTIGATION
EXPERT WITNESS

**NEW
BAPTIST
CHURCH**

BEULAH LAND
BAPTIST CHURCH
2436 ST. MAURICE AVE.
NEW ORLEANS, LA

**REFLECTED
CEILING
PLAN**

REV:

SCALE: AS NOTED

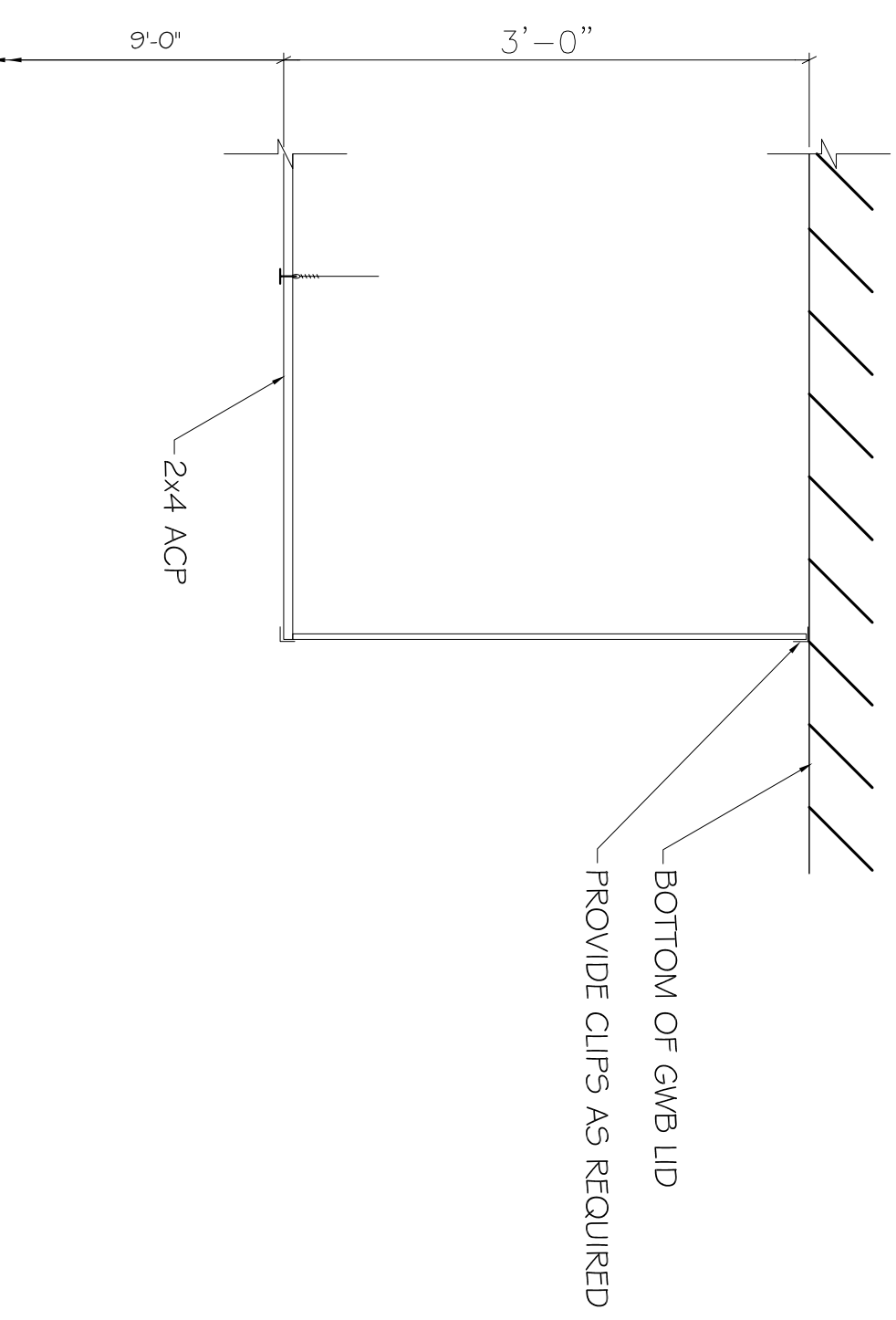
JOB#: 1910

DATE: 12-14-07

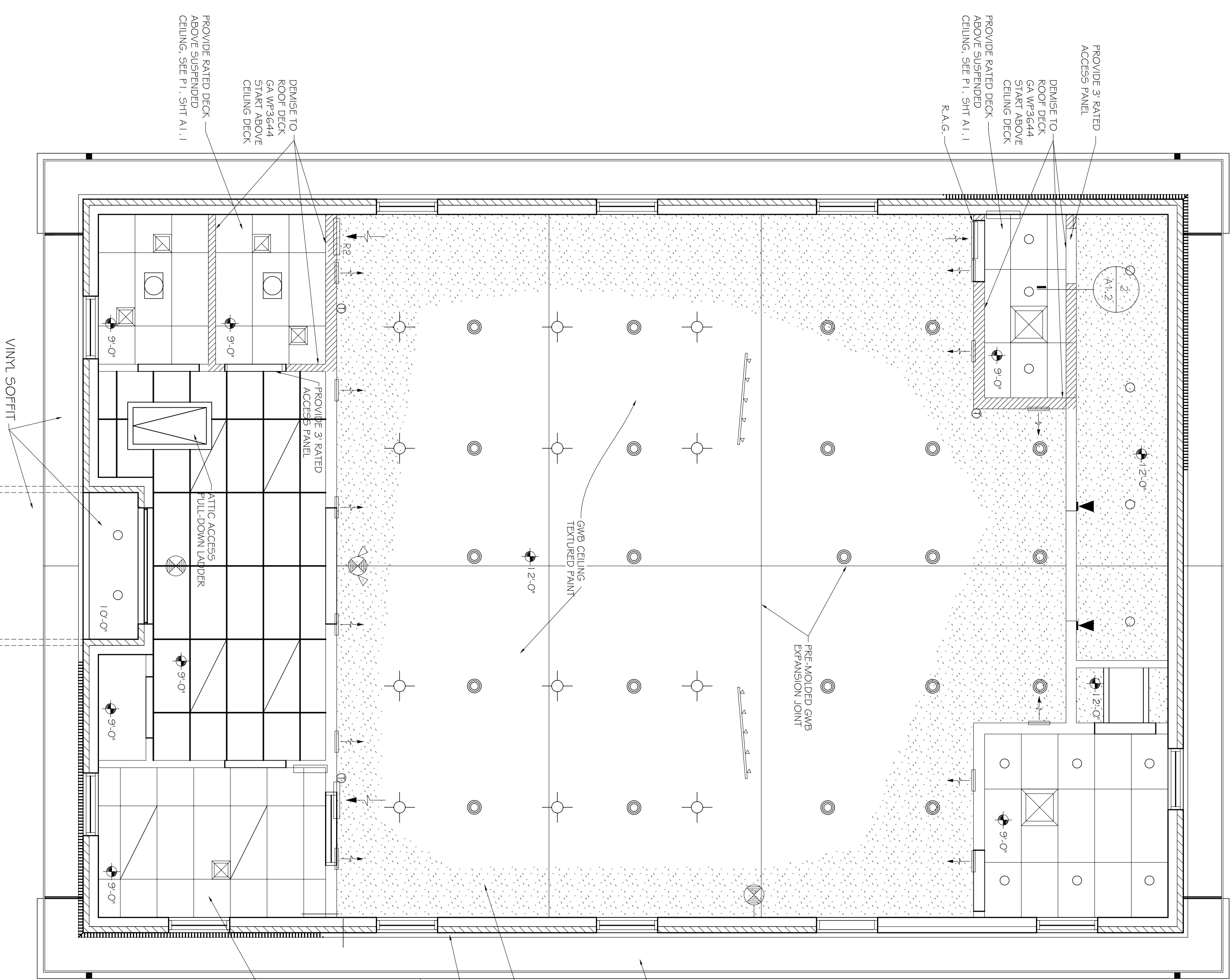
SHEET 6

A-2

OF 20



DETAIL
2
SCALE: 1"=1'-0"



REFLECTED CEILING PLAN
1
SCALE: 1/4"=1'-0"

1
A1.1

- CAN LIGHT w/ FLOOD LIGHT - DIMABLE
- PENDANT LIGHT - DIMABLE
- RECESSED CAN LIGHT
- EXHAUST FAN/LIGHT COMBO
- EXIT SIGN
- EXIT SIGN/EMERGENCY LIGHT COMBO
- SWIVEL HEAD LIGHT - DIMABLE

2x4 ACP & GRID
15/16" INT. GRID - WHITE
W/ US6 - RADAR SQUARE
EDGE

ALUMINUM
DOWNSPOUT 4

CONT. 3" VINYL VENT

STIPPLE REPRESENTS
GWB CEILING
TEXTURED PAINT

VINYL SOFFIT

GWB CEILING
TEXTURED PAINT

PRE-MOLDED GWB
EXPANSION JOINT

PROVIDE RATED DECK
ABOVE SUSPENDED
CEILING, SEE PT. 1, SH1 A1.1

DRIP TO
ROOF DECK
GA WP3644
STAIR ABOVE
CEILING DECK

PROVIDE RATED DECK
ABOVE SUSPENDED
CEILING, SEE PT. 1, SH1 A1.1

PROVIDE 3" RATED
ACCESS PANEL

DRIP TO
ROOF DECK
GA WP3644
STAIR ABOVE
CEILING DECK

PROVIDE RATED DECK
ABOVE SUSPENDED
CEILING, SEE PT. 1, SH1 A1.1

R.A.G.

VINYL SOFFIT