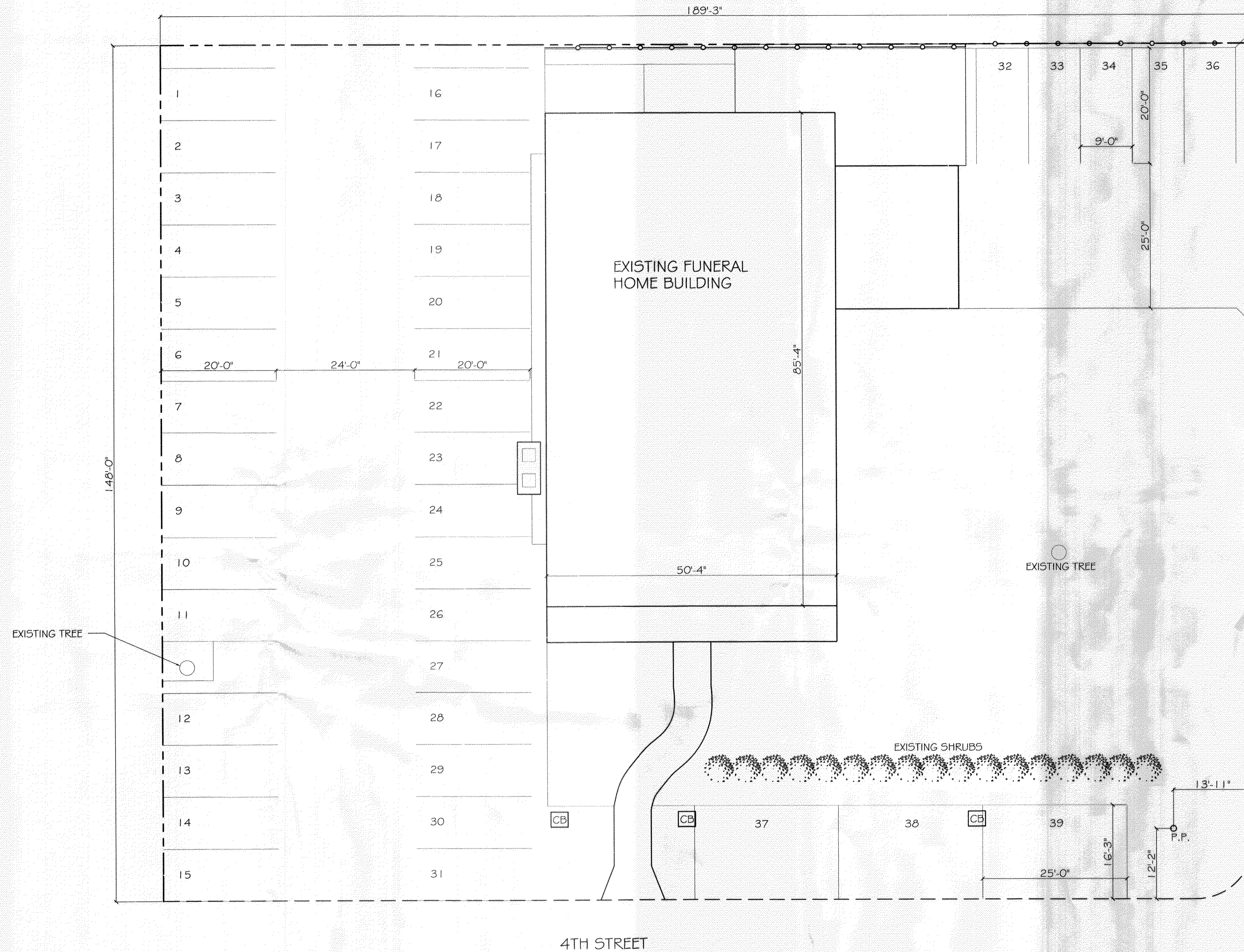
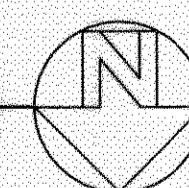


LEGEND

- ESTIMATED PROPERTY LINE
- - - EXISTING EDGE OF STREET
- ==== EXISTING EDGE OF CONCRETE
- — — EXISTING BUILDING OUTLINE
- ○ ○ ○ ○ EXISTING FENCE



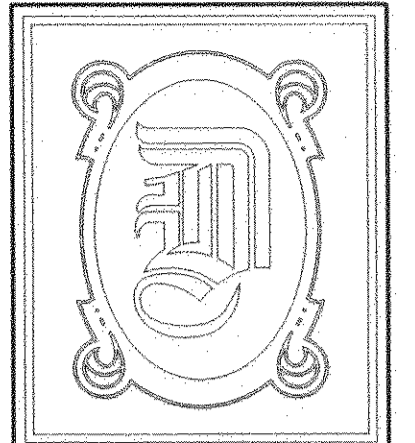
EXISTING SITE OFF-STREET PARKING
SCALE: 1"=10'-0"



NOTE

PARKING AGREEMENT WITH FUNERAL HOME LOCATED ON SOUTH SIDE OF FOURTH STREET.

376923
REVIEWED FOR
STATE FIRE MARSHAL
AS PER REVIEW LETTER
BY: WILLIAM D. JONES, ARCHITECT, CBO
William D. Jones



**DAMMON
ENGINEERING, INC.**

CHIEF ENGINEER
EMMETT
DAMMON, P.E.

CHIEF ARCHITECT
ROBERT
WILTSE

1095 FLORIDA AVENUE
SLIDELL, LA. 70458
OFFICE: 985-649-5832
FAX: 985-641-5950

WEBSITE:
WWW.DAMMONENGINEERING.COM

EMAIL:
DAMMONENG@BELLSOUTH.NET

- ARCHITECTURE
- ENGINEERING
- STUDIES
- PLANNING
- INVESTIGATION
- EXPERT WITNESS

NEW
CHURCH

TABERNACLE
BAPTIST CHURCH
2445 FOURTH AVE.
SLIDELL, LA

EXISTING
SITE
OFF-STREET
PARKING

William D. Jones

REV:

SCALE: AS NOTED

JOB#: 2050

DATE: 2-8-10

SHEET 4

C-3

OF 25