

PANEL: MDP-1  
LOCATION: TABERNACLE BAPTIST CHURCH ELECTRICAL CLOSET  
FEEDER SOURCE: CLECO

VOLTAGE: 120/240V, 400A 1Ø, 3W, WITH MAIN BRKR.  
SURFACE MOUNTED WEQUIPMENT GND BAR

CKT. NO.	THHN WIRE SIZE	LOAD DESCRIPTION LOCATION	BREAKER		LOAD (VA)	AØ	BØ	LOAD (VA)	BREAKER		LOAD DESCRIPTION LOCATION	THHN WIRE SIZE	CKT. NO.
			AMP	POLE					POLF	AMP			
1	#2	LP-1	100	2	8548		5000	2	60	AHU #1 10 KW	#6	2	
3	#2	LP-1	100	2	8396		5000	2	60	AHU #1 10 KW	#6	4	
5	#6	AHU #1 5 KW	30	2	2500		5000	2	60	AHU #2 10 KW	#6	6	
7	#6	AHU #1 5 KW	30	2	2500		5000	2	60	AHU #2 10 KW	#6	8	
9	#6	AHU #2 5 KW	30	2	2500		5000	2	60	AHU #3 10 KW	#6	10	
11	#6	AHU #2 5 KW	30	2	2500		5000	2	60	AHU #3 10 KW	#6	12	
13	#6	AHU #3 5 KW	30	2	2500		5000	2	60	AHU #4 10 KW	#6	14	
15	#6	AHU #3 5 KW	30	2	2500		5000	2	60	AHU #4 10 KW	#6	16	
17	#6	AHU #4 5 KW	30	2	2500		7200	2	60	A/C COMPRESSOR #1 4 TON	#8	18	
19	#6	AHU #4 5 KW	30	2	2500		7200	2	60	A/C COMPRESSOR #1 4 TON	#8	20	
21	#8	A/C COMPRESSOR #2 5 TON	60	2	7200		7200	2	60	A/C COMPRESSOR #3 5 TON	#8	22	
23	#8	A/C COMPRESSOR #2 5 TON	60	2	7200		7200	2	60	A/C COMPRESSOR #3 5 TON	#8	24	
25	#8	A/C COMPRESSOR #4 5 TON	60	2	7200		2400	2	20	WATER HEATER 20 GALLON	#12	26	
27	#8	A/C COMPRESSOR #4 5 TON	60	2	7200		2400	2	20	WATER HEATER 20 GALLON	#12	28	
29	#12	WOMENS RESTROOM 101 & JANITOR'S CLOSET 103 GFI RECEPTACLES	20	1	320		1120	1	20	WOMENS 101, MENS 102, LIGHTS BOOTH 104, SANCTUARY 105, & HVAC DECKS RECEPTACLES	#12	30	
31	#12	FOYER 100 RECEPTACLES	20	1	640		1120	1	20	SANCTUARY 105 RECEPTACLES	#12	32	
33	#12	SANCTUARY 105 RECEPTACLES	20	1	1120		160	1	20	PULPIT/CHOIR AREA FLOOR RECEPTACLE	#12	34	
35	#12	PULPIT/DRUMS AREA RECEPTACLES	20	1	320		320	1	20	PULPIT/PIANO/ORGAN AREA RECEPTACLES	#12	36	
37	#8	WATER HEATER 40 GALLON	30	2	3600		-	1	20	SPARE	#12	38	
39	#8	WATER HEATER 40 GALLON	30	2	3600		-	1	20	SPARE	#12	40	
41	#12	SPARE	20	1	-		-	1	20	SPARE	#12	42	

TOTAL CONNECTED LOAD (VA) = 151,664  
AØ = 76,068    BØ = 75,596

GROUND BUS  
GROUND WIRE (G)

SOLID NEUTRAL  
NEUTRAL WIRE (W)

PANEL: LP-1  
LOCATION: TABERNACLE BAPTIST CHURCH ELECTRICAL CLOSET  
FEEDER SOURCE: CLECO

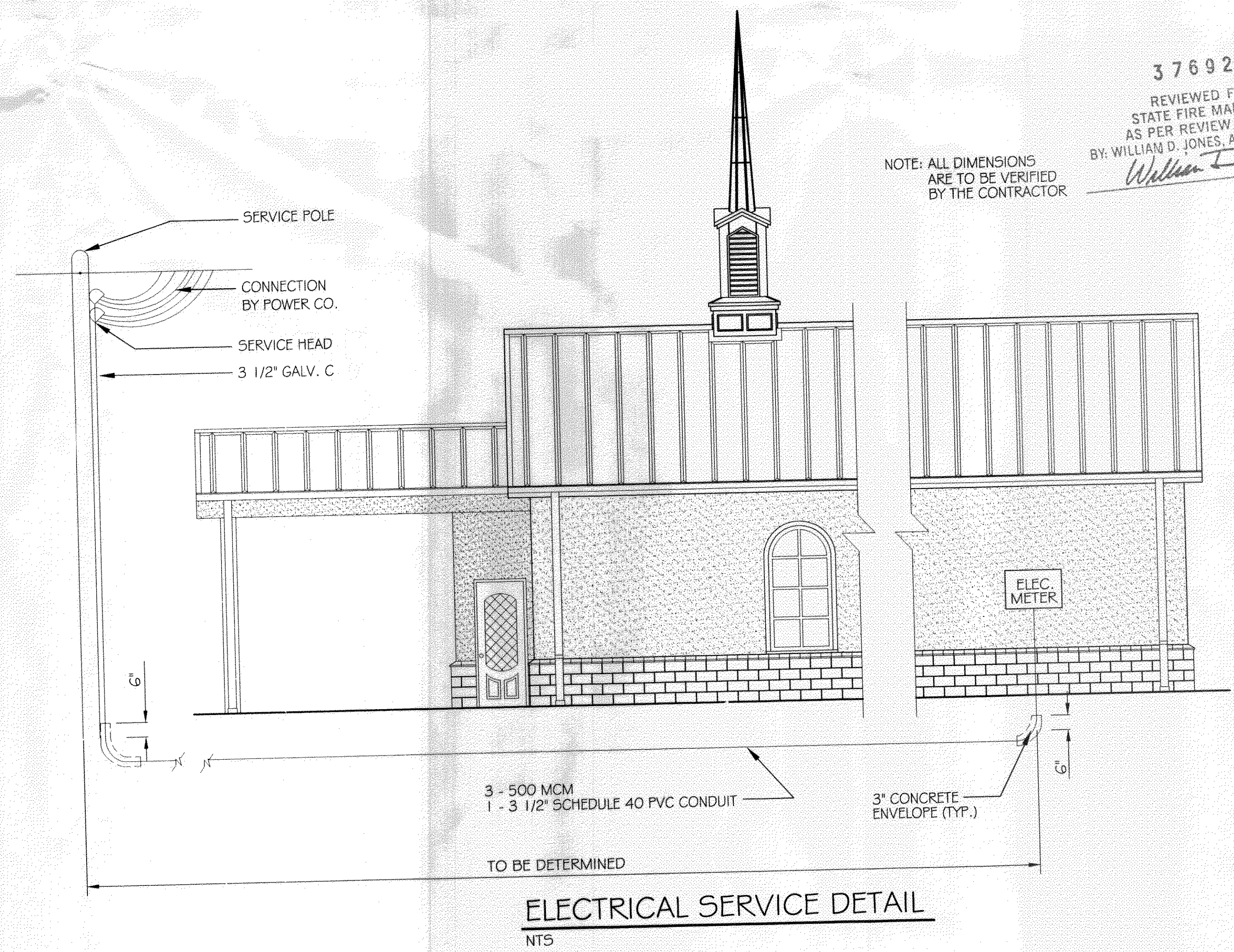
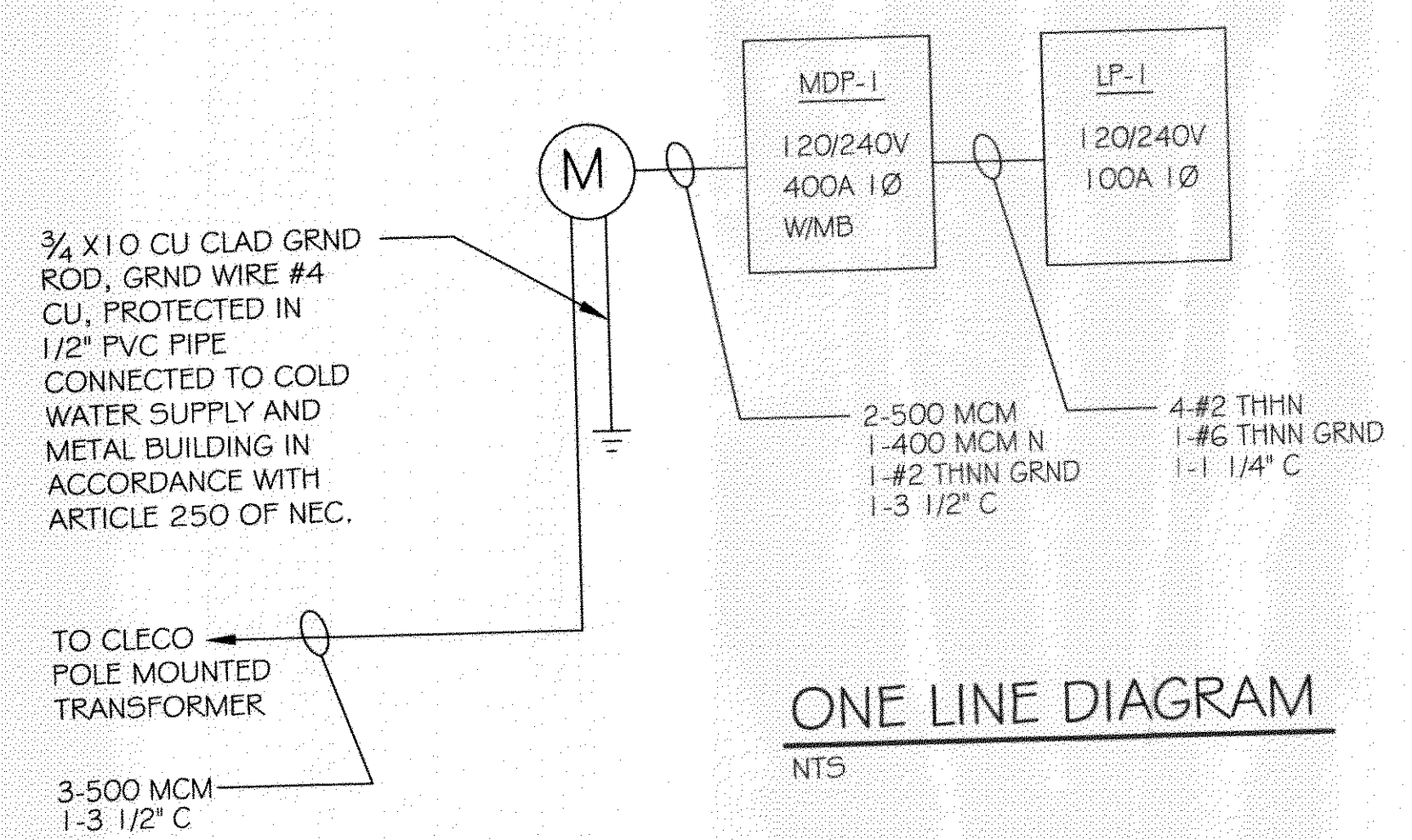
VOLTAGE: 120/240V, 100A 1Ø, 3W, MLO  
SURFACE MOUNTED WEQUIPMENT GND BAR

CKT. NO.	THHN WIRE SIZE	LOAD DESCRIPTION LOCATION	BREAKER		LOAD (VA)	AØ	BØ	LOAD (VA)	BREAKER		LOAD DESCRIPTION LOCATION	THHN WIRE SIZE	CKT. NO.
			AMP	POLE					POLE	AMP			
1	#12	CORRIDOR 110, WOMENS DRESSING 111, ALCOVE 107, & HVAC DECK RECEPTACLES	20	1	960		480	1	20	WOMENS 112 & KITCHENETTE 113 GFI RECEPTACLES	#12	2	
3	#12	REFRIGERATOR RECEPTACLE	20	1	160		800	1	20	MENS DRESSING 114, ALCOVE 108, & HVAC DECK RECEPTACLES	#12	4	
5	#12	MENS RESTROOM 115 GFI RECEPTACLE	20	1	160		960	1	20	EXTERIOR WEATHERPROOF GFI RECEPTACLES	#12	6	
7	#12	FOYER 100 LIGHTS	20	1	384		456	1	20	WOMENS RESTROOM 101 & JANITOR'S CLOSET 103 LIGHTS, LIGHT ABOVE DECK	#12	8	
9	#12	MENS RESTROOM 102 & SOUNDLIGHT BOOTH 104 LIGHTS, LIGHT ABOVE DECK	20	1	446		1200	1	20	DIRECTIONAL STAGE TRACK LIGHTS	#12	10	
11	#12	SANCTUARY 105 LIGHTS	20	1	1350		1350	1	20	SANCTUARY 105 LIGHTS	#12	12	
13	#12	SANCTUARY 105 LIGHTS	20	1	1350		1350	1	20	SANCTUARY 105 LIGHTS	#12	14	
15	#12	SANCTUARY LIGHTS AT PULPIT 106 AND STAGE AREAS	20	1	900		900	1	20	SANCTUARY LIGHTS AT PULPIT 106 AND STAGE AREAS	#12	16	
17	#12	SANCTUARY LIGHTS AT CHOIR STAGE AREA	20	1	540		540	1	20	SANCTUARY LIGHTS OVER BAPTISTRY 109	#12	18	
19	#12	ROOMS NUMBER 110, 111, 112, 113, 114, 115, & 116 LIGHTS	20	1	1300		720	1	20	EXTERIOR COVERED DROPOFF CAN LIGHTS	#12	20	
21	#12	EXTERIOR WALL MOUNTED FIXTURE LIGHTS AT DOOR EXITS/ENTRIES	20	1	500		34	1	20	EXIT AND EMERGENCY LIGHTS	#12	22	
23	#12	EMERGENCY/EXIT LIGHT COMBO UNITS	20	1	48		-	1	20	SPARE	#12	24	
25	#12	SPARE	20	1	-		-	1	20	SPARE	#12	26	
27	#12	SPARE	20	1	-		-	1	20	SPARE	#12	28	
29	#12	SPARE	20	1	-		-	1	20	SPARE	#12	30	
31	-	SPACE	-	-	-		-	-	-	SPACE	-	32	
33	-	SPACE	-	-	-		-	-	-	SPACE	-	34	
35	-	SPACE	-	-	-		-	-	-	SPACE	-	36	
37	-	SPACE	-	-	-		-	-	-	SPACE	-	38	
39	-	SPACE	-	-	-		-	-	-	SPACE	-	40	
41	-	SPACE	-	-	-		-	-	-	SPACE	-	42	

TOTAL CONNECTED LOAD (VA) = 16,944  
AØ = 8,548    BØ = 8,396

GROUND BUS  
GROUND WIRE (G)

SOLID NEUTRAL  
NEUTRAL WIRE (W)



376923  
REVIEWED FOR  
STATE FIRE MARSHAL  
AS PER REVIEW LETTER  
BY: WILLIAM D. JONES, ARCHITECT, CBO  
*William D. Jones*

**DAMMON ENGINEERING, INC.**  
CHIEF ENGINEER  
EMMETT DAMMON, P.E.  
CHIEF ARCHITECT  
ROBERT WILTSE  
1095 FLORIDA AVENUE  
SLIDELL, LA. 70458  
OFFICE: 985-649-5832  
FAX: 985-641-5950  
WEBSITE:  
WWW.DAMMONENGINEERING.COM  
EMAIL:  
DAMMONENG@BELLSOUTH.NET  
ARCHITECTURE  
ENGINEERING  
STUDIES  
PLANNING  
INVESTIGATION  
EXPERT WITNESS

NEW CHURCH  
TABERNACLE BAPTIST CHURCH  
2445 FOURTH AVE.  
SLIDELL, LA

ELECTRICAL SCHEDULES & ONE-LINE DIAGRAM

REV: *[Signature]*  
SCALE: AS NOTED  
JOB#: 2050  
DATE: 2-8-10  
SHEET 24