

**DAMMON**  
ENGINEERING, INC.

CHIEF ENGINEER  
EMMETT  
DAMMON, P.E.  
CHIEF ARCHITECT  
ROBERT  
WILTSE

1095 FLORIDA AVENUE  
SUDELL, LA. 70458  
OFFICE: 985-649-5832  
FAX: 985-641-5950

WEBSITE  
WWW.DAMMONENGINEERING.COM  
EMAIL:  
DAMMONENGS@BELLSouth.NET

ARCHITECTURE  
ENGINEERING  
STUDIES  
PLANNING  
INVESTIGATION  
EXPERT WITNESS

**NEW  
CHURCH**

TABERNACLE  
BAPTIST CHURCH  
2445 FOURTH ST.  
SUDELL, LA

**SITE  
DEMO**

REV:

SCALE: AS NOTED

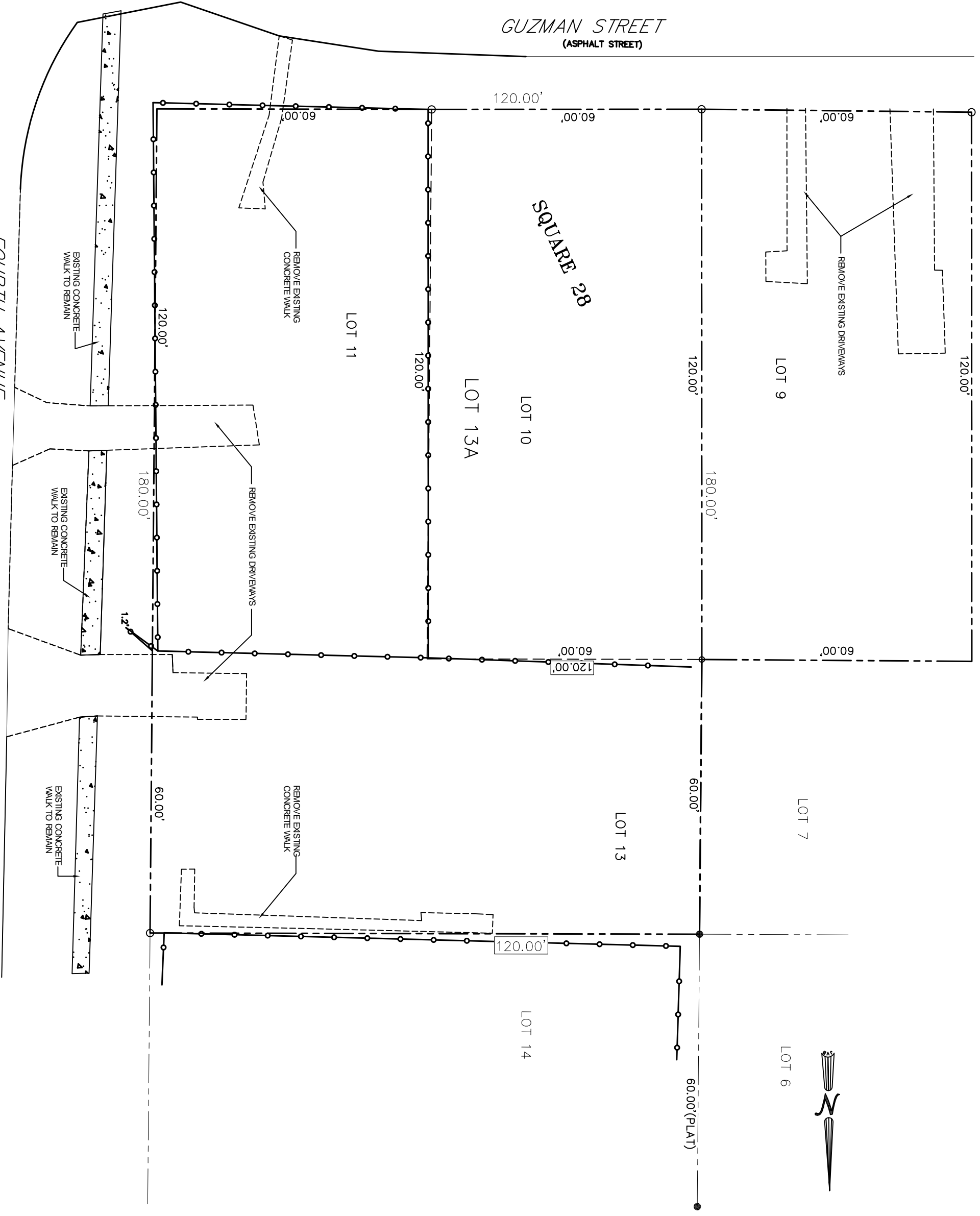
JOB#: 2050

DATE: 2-8-10

SHEET 10

**D-1**

OF 25



**SITE DEMOLITION PLAN**  
SCALE: 1" = 10'