

DAMMON
ENGINEERING, INC.

CHIEF ENGINEER
EMMETT
DAMMON, P.E.

CHIEF ARCHITECT
ROBERT
WILTSE

1095 FLORIDA AVENUE
SLIDELL, LA, 70458
OFFICE: 985-649-5632
FAX: 985-641-5950

WEBSITE:
WWW.DAMMONENGINEERING.COM
EMAIL:
DAMMONENGIN@BLSOUTH.NET

ARCHITECTURE
ENGINEERING
STUDIES
PLANNING
INVESTIGATION
EXPERT WITNESSES

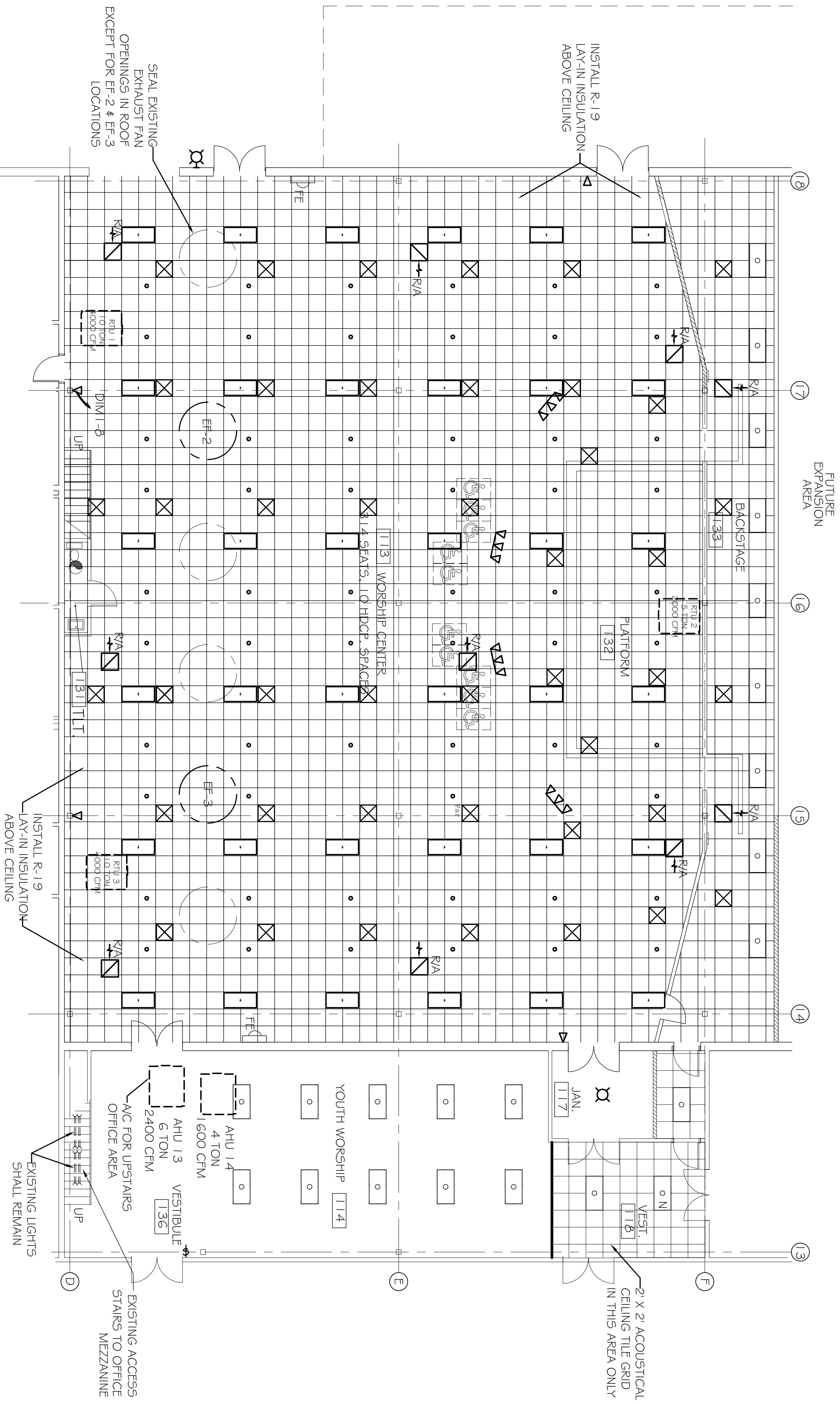
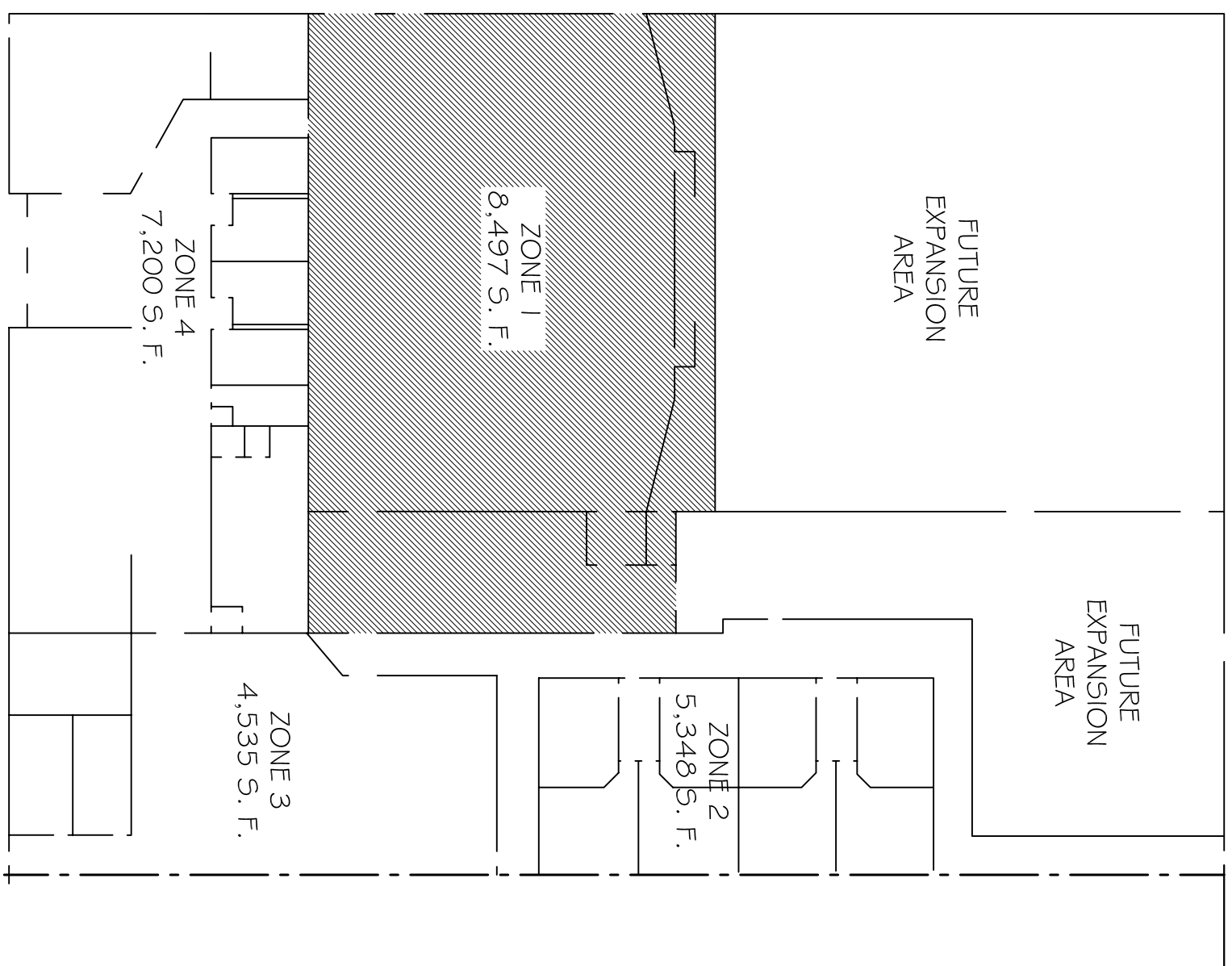
NORTHSHORE
CHURCH
KENSINGTON DR.
SLIDELL, LA

ZONE 1
REFLECTED CEILING
PLAN

REV: #1 06-08-09
SCALE: AS NOTED
JOB#: 1988
DATE: 09-30-08
SHEET

OF

E-1



ZONE 1 REFLECTED CEILING PLAN

SCALE: 1/8"=1'-0"

LEGEND

- -EXISTING REFLECTED CEILING
- - -NEW REFLECTED CEILING
- -24" X 24" SUPPLY AIR DUCT
- -24" X 24" RETURN AIR DUCT
- -24" X 48" 4 BULB FLUORESCENT FIXTURE (N= NIGHT LIGHT- ALWAYS ON)
- -CEILING MOUNTED FIXTURE
- -TRACK LIGHTING
- -EXTERIOR WALL SCONCE FIXTURE W/ 50 MIN. BATTERY BACKUP
- -FIRE EXTINGUISHER & CABINET- 10 LB. MULTI-USE
- -EXISTING 2 X 4 FLUORESCENT FIXTURE
- -EXISTING 2 BULB FLUORESCENT FIXTURE
- -EXISTING 2 X 4 FLUORESCENT FIXTURE
- -EXISTING HPS FIXTURE
- -EXISTING REFLECTED CEILING
- -NEW REFLECTED CEILING
- -24" X 24" SUPPLY AIR DUCT
- -24" X 24" RETURN AIR DUCT
- -24" X 48" 4 BULB FLUORESCENT FIXTURE (N= NIGHT LIGHT- ALWAYS ON)
- -CEILING MOUNTED FIXTURE
- -TRACK LIGHTING
- -EXTERIOR WALL SCONCE FIXTURE W/ 50 MIN. BATTERY BACKUP
- -FIRE EXTINGUISHER & CABINET- 10 LB. MULTI-USE