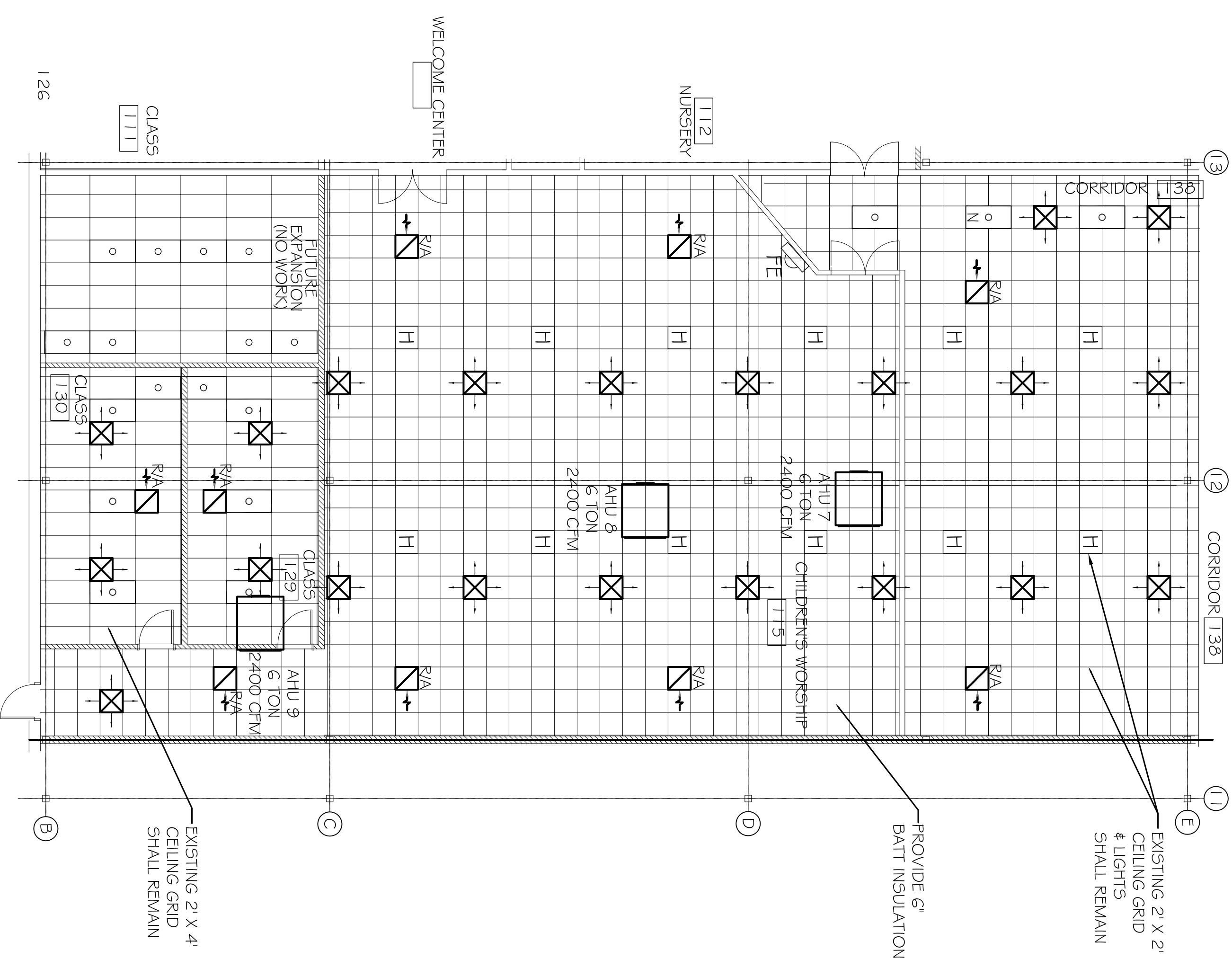
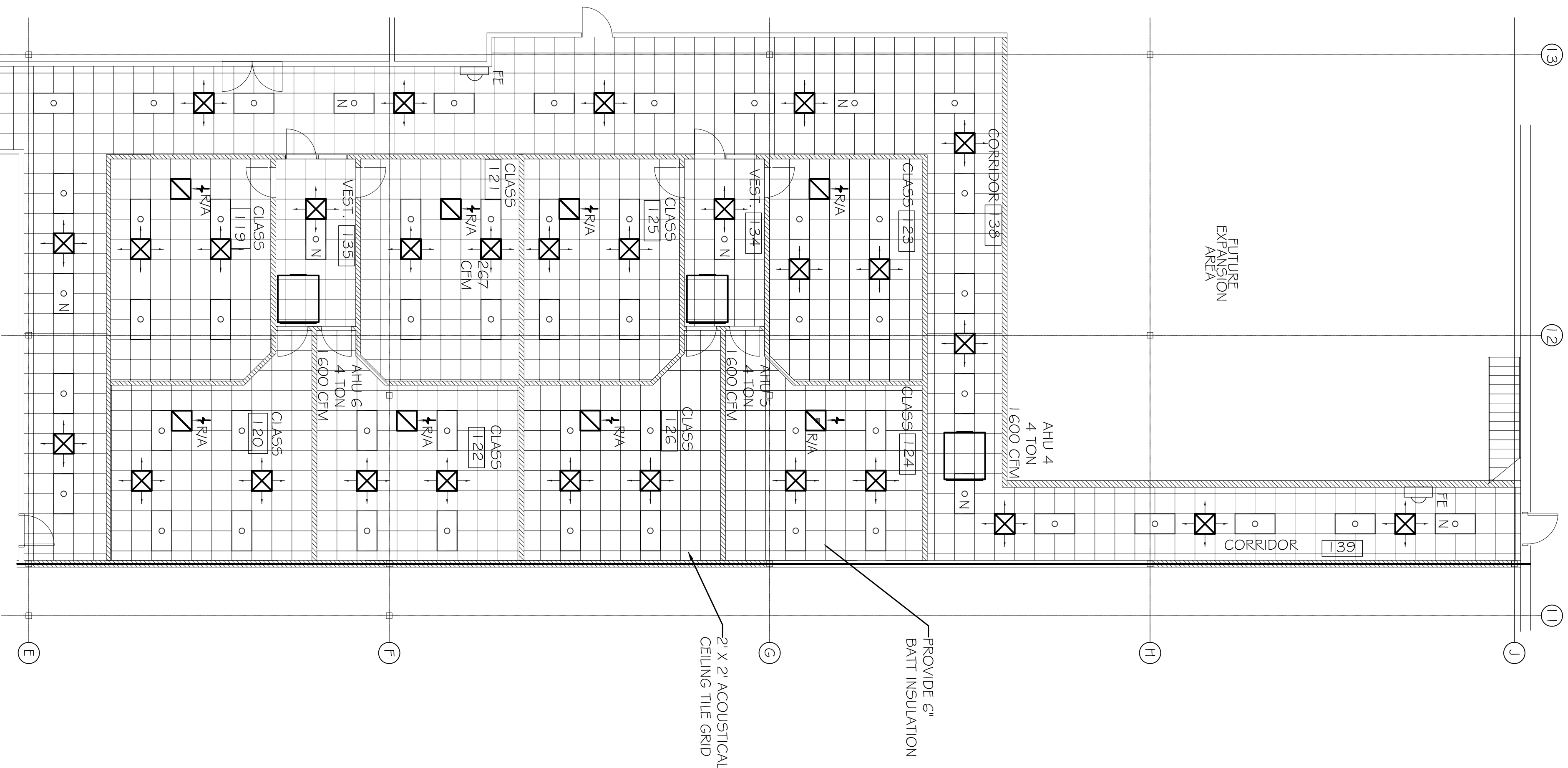


KEY PLAN
N.T.S.

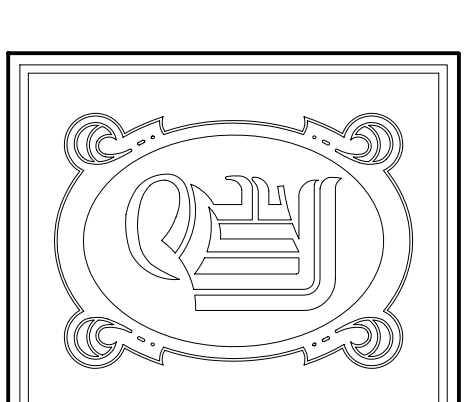


ZONE 3 REFLECTED CEILING PLAN
SCALE: 1/8"=1'-0"

LEGEND

- EXISTING 2 X 4 FLUORESCENT FIXTURE
- NEW REFLECTED CEILING
- EXISTING 2 BULB FLUORESCENT FIXTURE
- EXISTING 2 X 4 FLUORESCENT FIXTURE
- EXISTING HPS FIXTURE
- EXISTING 2 X 4 CEILING GRID SHALL REMAIN
- NEW 24" X 24" SUPPLY AIR DUCT
- 24" X 24" RETURN AIR DUCT
- 24" X 48" 4 BULB FLUORESCENT FIXTURE (N = NIGHT LIGHT - ALWAYS ON)
- CEILING MOUNTED FIXTURE
- TRACK LIGHTING
- EXTERIOR WALL SCONCE FIXTURE W/ 50 MIN. BATTERY BACKUP
- FIRE EXTINGUISHER & CABINET - 10 LB. MULTI-USE

ZONE 2 REFLECTED CEILING PLAN
SCALE: 1/8"=1'-0"



DAMMON ENGINEERING, INC.

CHIEF ENGINEER
EMMETT DAMMON, P.E.
CHIEF ARCHITECT
ROBERT WILTSE

1095 FLORIDA AVENUE
SLIDELL, LA, 70458
OFFICE: 985-649-5632
FAX: 985-641-5950

WEBSITE:
WWW.DAMMONENGINEERING.COM
EMAIL:
DAMMONENG@BELLCSOUTH.NET

ARCHITECTURE
ENGINEERING
STUDIES
PLANNING
INVESTIGATION
EXPERT WITNESSES

NORTHSHORE
CHURCH
KENSINGTON DR.
SLIDELL, LA

ZONES 2 & 3
REFLECTED CEILING
PLAN

REV:03-23-09
SCALE: AS NOTED
JOB#: 1988
DATE: 09-30-08
SHEET

E-2

OF