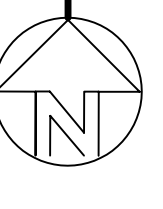
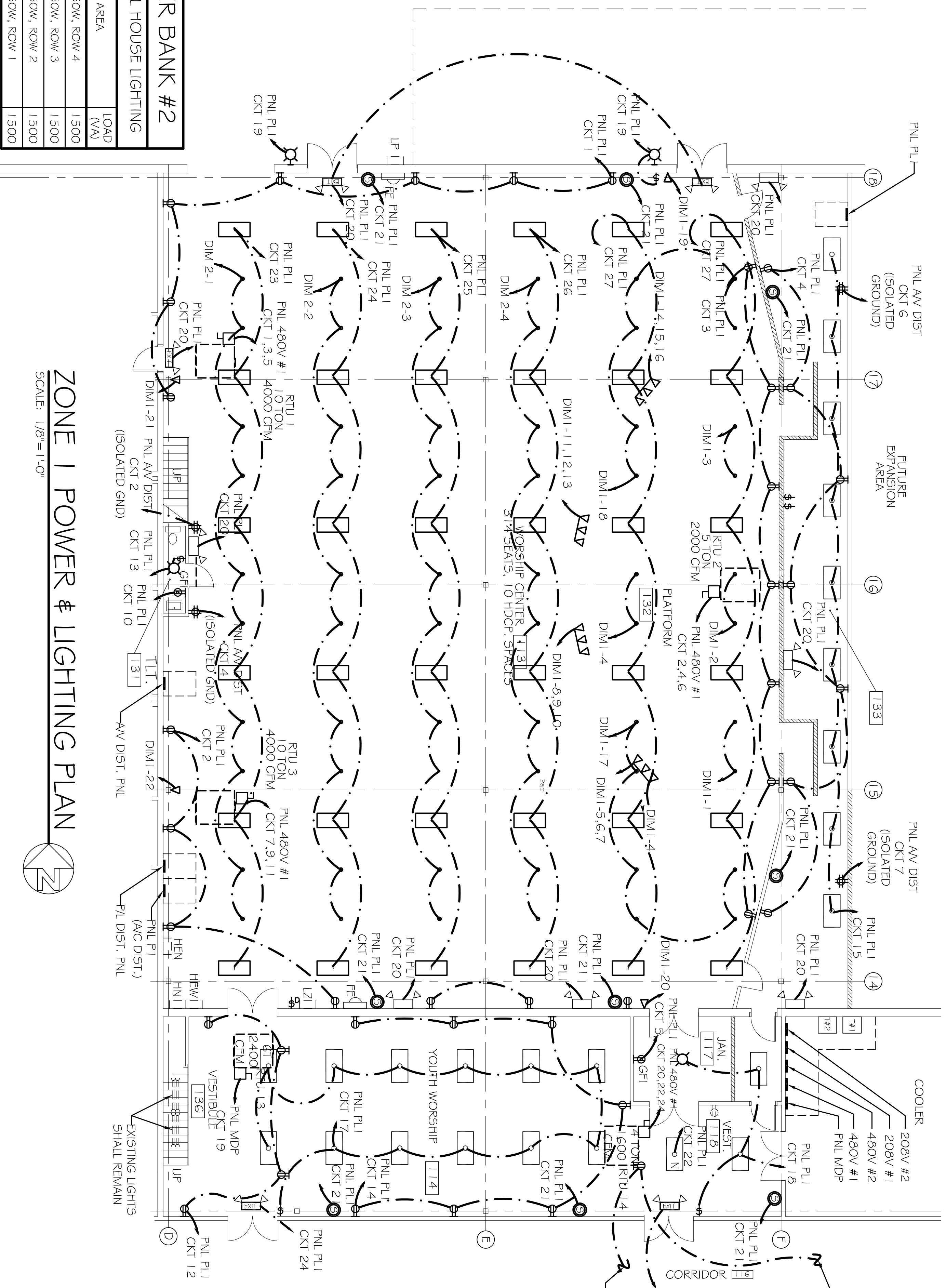


### ELECTRICAL KEY PLAN



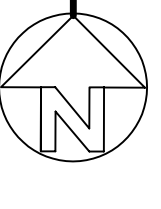
DIMMER BANK # 1		
CKT. NO	AREA	LOAD (VA)
1	PAR 38 STAGE LEFT, INNER	300
2	PAR 38 STAGE CENTER, REAR	300
3	PAR 38 STAGE RIGHT, INNER	300
4	PAR 38 STAGE CENTER, FRONT	300
5	STAGE TRACK LIGHT #1-1	150
6	STAGE TRACK LIGHT #1-2	150
7	STAGE TRACK LIGHT #1-3	150
8	STAGE TRACK LIGHT #2-1	150
9	STAGE TRACK LIGHT #2-2	150
10	STAGE TRACK LIGHT #2-3	150
11	STAGE TRACK LIGHT #3-1	150
12	STAGE TRACK LIGHT #3-2	150
13	STAGE TRACK LIGHT #3-3	150
14	STAGE TRACK LIGHT #4-1	150
15	STAGE TRACK LIGHT #4-2	150
16	STAGE TRACK LIGHT #4-3	150
17	PAR 38 STAGE LEFT, OUT	900
18	PAR 38 STAGE RIGHT, OUT	900
19	LEFT WALL FRONT	200
20	RIGHT WALL FRONT	200
21	LEFT WALL REAR	200
22	RIGHT WALL REAR	200
23		
24		
TOTAL =		3000
5G00W = 15.5A @ 120V/208V-3Ø-4W		

DIMMER BANK #2		
CKT. NO	AREA	LOAD (VA)
1	PAR 38 150W, ROW 4	1500
2	PAR 38 150W, ROW 3	1500
3	PAR 38 150W, ROW 2	1500
4	PAR 38 150W, ROW 1	1500



### ZONE 1 POWER & LIGHTING PLAN

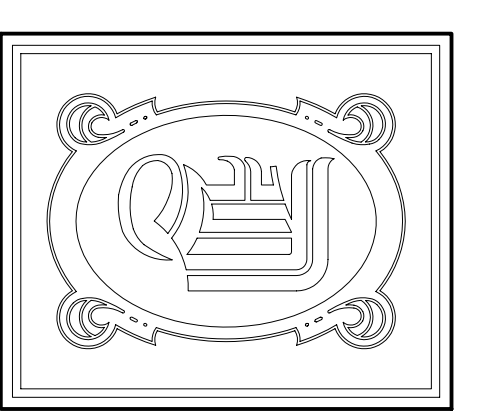
SCALE: 1/8"=1'-0"



### LEGEND

NOTE:  
FIRE ALARM SYSTEM SHALL BE INSTALLED BY A  
CERTIFIED FIRE ALARM COMPANY.

- ⊕ -EXISTING DUPLEX OUTLET
- ⊕ -EXISTING DUPLEX GFI OUTLET
- ⊕ -EXISTING DUPLEX WEATHERPROOF GFI OUTLET
- ⊕ -EXISTING QUAD OUTLET
- ⊕ -EXISTING 208V OUTLET
- ⊕ -EXISTING WEATHERPROOF 208V OUTLET
- ⊕ -EXISTING DISCONNECT
- ⊕ -EXISTING POWER, LIGHTING PANEL
- ⊕ -EXISTING SWITCH
- ⊕ -EXISTING 3 WAY SWITCH
- ⊕ -EXISTING 2 X 4 FLUORESCENT FIXTURE
- ⊕ -EXISTING 2 X 4 FLUORESCENT FIXTURE
- ⊕ -EXISTING 2 X 4 FLUORESCENT FIXTURE
- ⊕ -EXISTING EXIT/ EMERGENCY LIGHT
- ⊕ -EXISTING HALIDE LIGHT
- ⊕ -EXISTING HPS FIXTURE
- ⊕ -EXISTING TELEPHONE/ DATA OUTLET
- ⊕ -SWITCH
- ⊕ -DIMMER SWITCH
- ⊕ 2 X 4 FLUORESCENT FIXTURE
- ⊕ IN INDICATES NIGHT LIGHT - ALWAYS ON
- ⊕ -CEILING MOUNTED FIXTURE
- ⊕ -EXTERIOR WALL SCONCE FIXTURE W/ 90 MIN. BATTERY BACKUP
- ⊕ -PENDANT LIGHT
- ⊕ -TRACK LIGHTING
- ⊕ -REVERSIBLE CEILING FAN (REVERSIBLE @ WALL SWITCH)
- ⊕ -EXTERIOR WALL SCONCE FIXTURE W/ 90 MIN. BACKUP
- ⊕ EXIT LIGHT W/ 90 MIN. BACKUP
- ⊕ EXIT/ EMERGENCY LIGHT W/ 90 MIN. BACKUP (ARROW INDICATES DIRECTIONAL EXIT SIGN)
- ⊕ EMERGENCY LIGHT W/ 90 MIN. BACKUP
- ⊕ -CABLE TV OUTLET
- ⊕ -TELEPHONE OUTLET
- ⊕ -SMOKE DETECTOR
- ⊕ -VENT
- ⊕ -FIRE EXTINGUISHER AND CABINET - 10 LB. MULTI-USE



**DAMMON ENGINEERING, INC.**  
 CHIEF ENGINEER  
 EMANUETT DAMMON, P.E.  
 CHIEF ARCHITECT  
 ROBERT WILITSE

1095 FLORIDA AVENUE  
 SLIDELL, LA, 70450  
 OFFICE: 985-649-5632  
 FAX: 985-641-5950  
 WWW.DAMMONENGINEERING.COM  
 EMAIL: DAMMONENG@BELL-SOUTH.NET

ARCHITECTURE  
 ENGINEERING  
 STUDIES  
 PLANNING  
 INVESTIGATION  
 EXPERT WITNESSES

NORTHSHORE CHURCH  
 KENSINGTON DR.  
 SLIDELL, LA

ZONE 1 POWER & LIGHTING PLAN

REV:03-23-09  
 SCALE: AS NOTED  
 JOB#: 1988  
 DATE: 09-30-08  
 SHEET  
**E-4**  
 OF