

DAMMON ENGINEERING, INC.
 CHIEF ENGINEER
 EMMETT DAMMON, P.E.

CHIEF ARCHITECT
 ROBERT WILTSE

1095 FLORIDA AVENUE
 SLIDELL, LA, 70458
 OFFICE: 985-649-5832
 FAX: 985-641-5950

WEBSITE:
 WWW.DAMMONENGINEERING.COM
 EMAIL:
 DAMMONENG@BELLFLOWER.NET

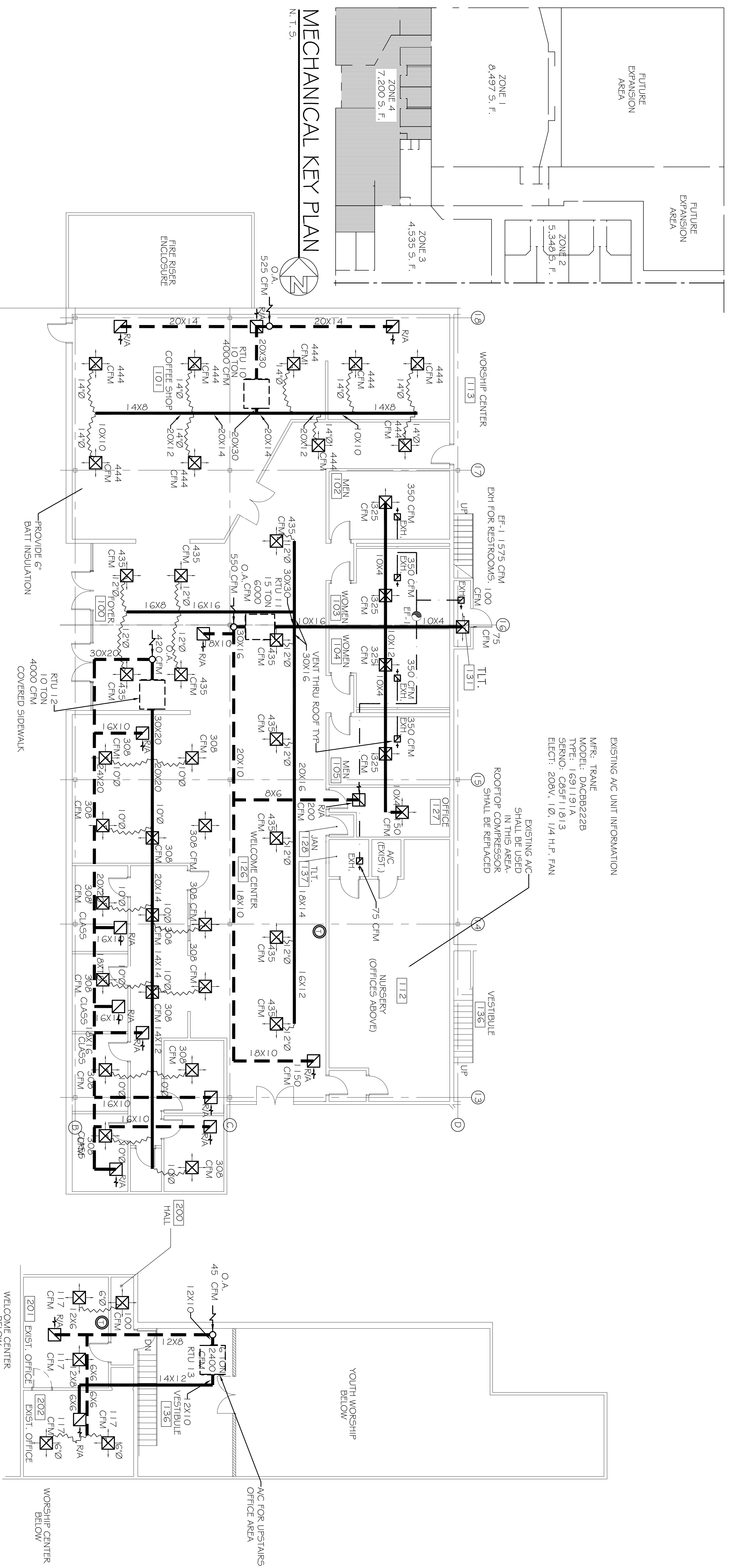
ARCHITECTURE
 ENGINEERING
 STUDIES
 PLANNING
 INVESTIGATION
 EXPERT WITNESSES

NORTHSHORE CHURCH
 KENSINGTON DR.
 SLIDELL, LA

ZONE 4, OFFICES
 MECHANICAL PLANS

REV: #1 06-08-09
 SCALE: AS NOTED
 JOB#: 1988
 DATE: 09-30-08
 SHEET

M-3



EXISTING A/C UNIT INFORMATION
 MFR: TRANE
 MODEL: DACBD222B
 TYPE: 1691191A
 SERNO: C85F11813
 ELECT: 208V, 1Ø, 1/4 H.P. FAN

EXISTING A/C SHALL BE USED IN THIS AREA - ROOFTOP COMPRESSOR SHALL BE REPLACED

NOTE:
 ALL HVAC EQUIPMENT SHOWN IS NEW. EXISTING HVAC EQUIPMENT SHALL BE REMOVED PRIOR TO CONSTRUCTION.

ZONE 4 MECHANICAL PLAN
 SCALE: 1/8" = 1'-0"

MEZZANINE OFFICES MECHANICAL PLAN
 SCALE: 1/8" = 1'-0"

- LEGEND**
- SUPPLY AIR DUCT
 - RETURN AIR DUCT
 - - - EXHAUST DUCT
 - ~ ~ ~ ROUND FLEXIBLE DUCT
 - ⊠ -24 X 24 SUPPLY AIR GRILLE
 - ⊠ -24 X 24 RETURN AIR GRILLE
 - ⊙ -THERMOSTAT
 - -VENT