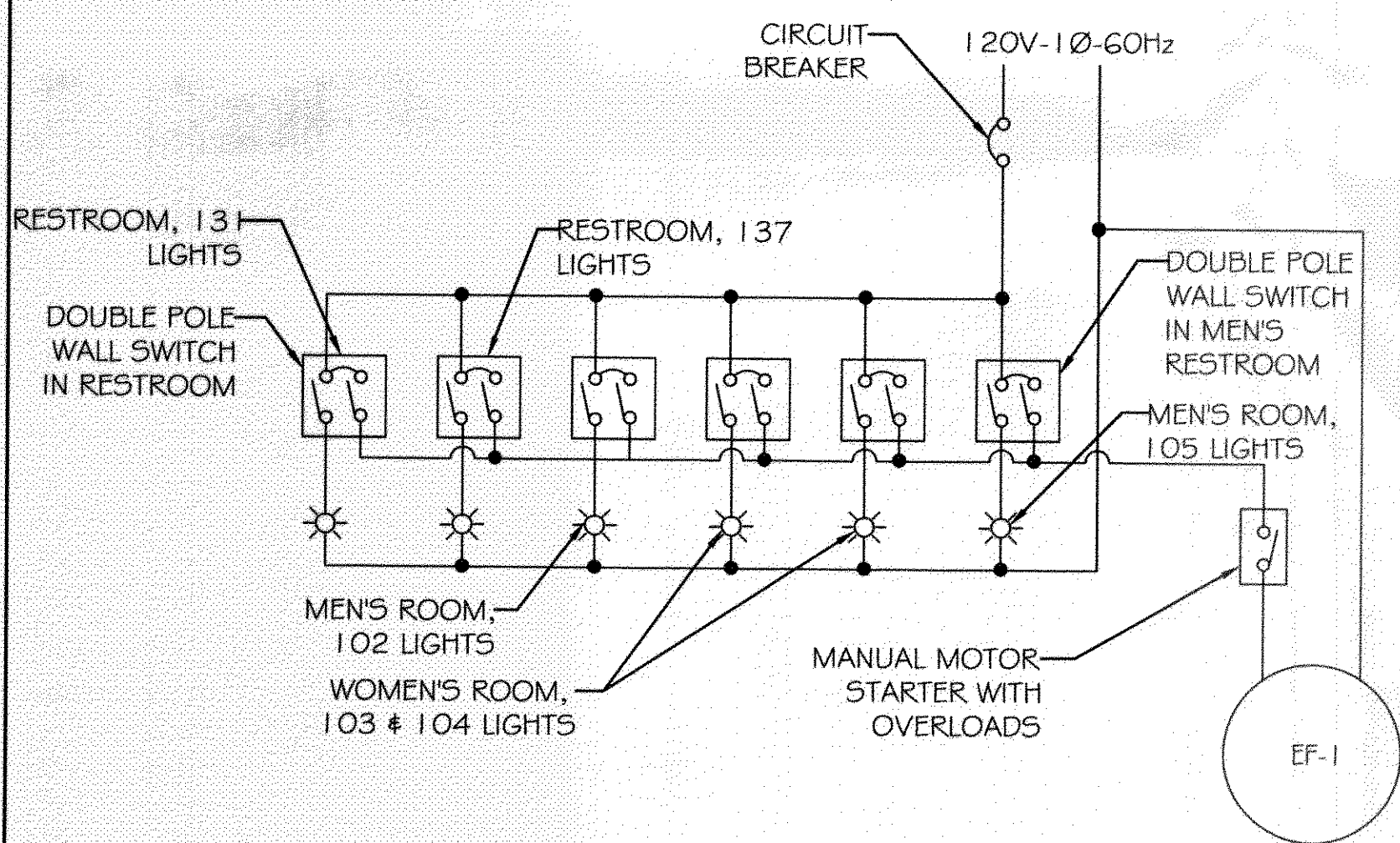
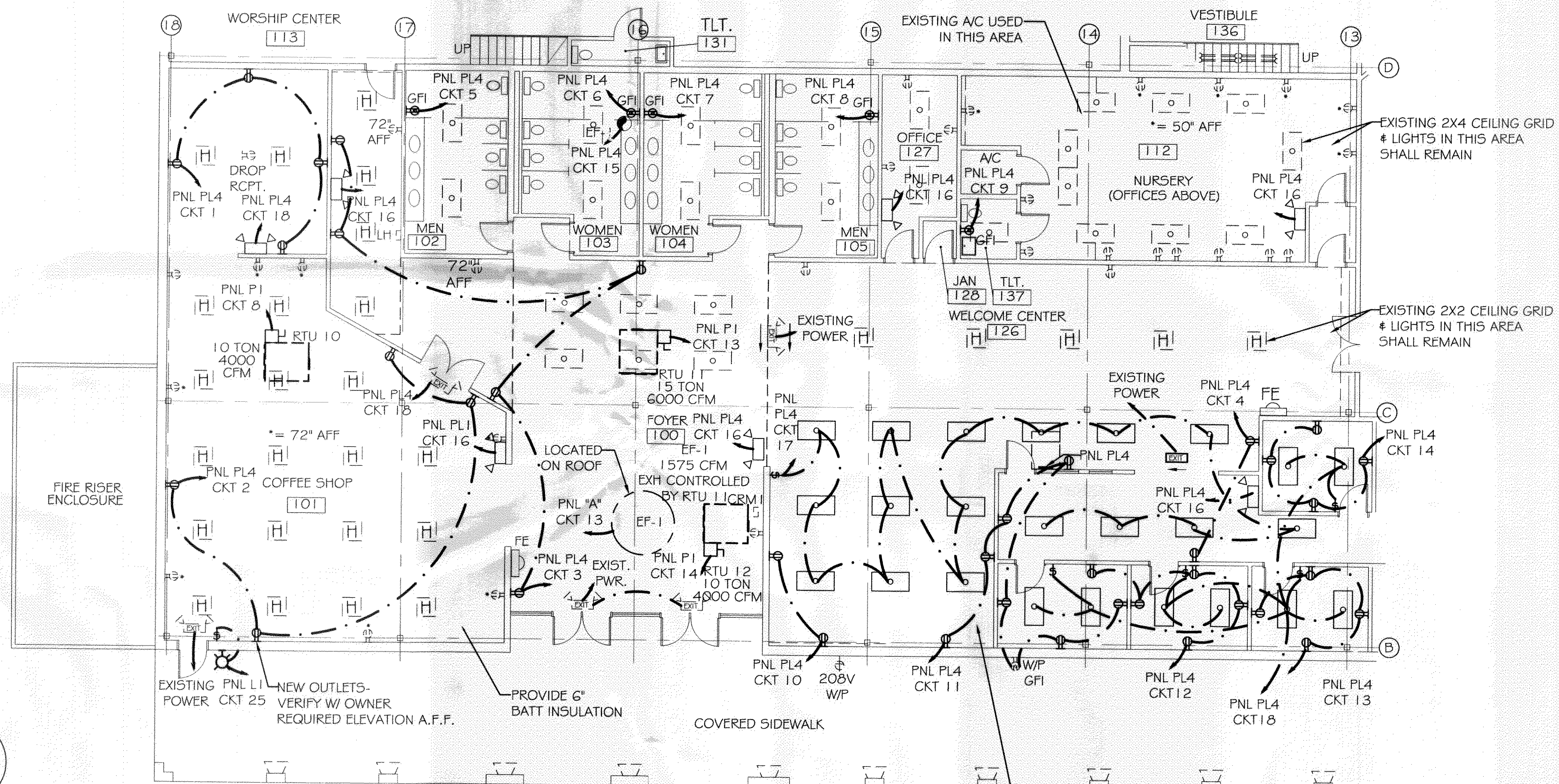


ELECTRICAL KEY PLAN
N. T. S.



**REST ROOM EXHAUST FAN/
LIGHTING DIAGRAM**
N. T. S.



NOTE:
ALL HVAC EQUIPMENT SHOWN IS NEW. EXISTING HVAC EQUIPMENT SHALL BE REMOVED PRIOR TO CONSTRUCTION, UNLESS OTHERWISE NOTED.
PROVIDE EQUIPMENT REQUIRED TO OPERATE 120V HEAT VENT EF-1 F10M LIGHT SWITCH. LOCATE SWITCH PER OWNER.

ZONE 4 POWER & LIGHTING PLAN
SCALE: 1/8"=1'-0"

LEGEND

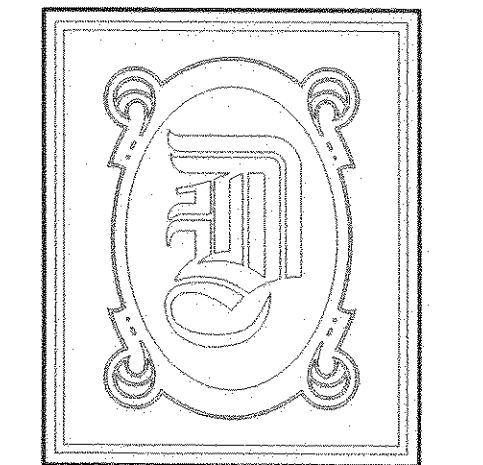
- ⊕ - EXISTING DUPLEX OUTLET
- GFI ⊕ - EXISTING DUPLEX GFI OUTLET
- W/P ⊕ - EXISTING DUPLEX WEATHERPROOF GFI OUTLET
- GFI ⊕ - EXISTING QUAD OUTLET
- 208V ⊕ - EXISTING 208V OUTLET
- 208V W/P ⊕ - EXISTING WEATHERPROOF 208V OUTLET
- ⊕ - EXISTING DISCONNECT
- HENL ⊕ - EXISTING POWER, LIGHTING PANEL

- ⊕ - EXISTING SWITCH
- ⊕ - EXISTING 3 WAY SWITCH
- ⊕ - EXISTING 2 X 4 FLUORESCENT FIXTURE
- ⊕ - EXISTING 2 BULB FLUORESCENT FIXTURE
- ⊕ - EXISTING 2 X 4 FLUORESCENT FIXTURE
- ⊕ - EXISTING EXIT/ EMERGENCY LIGHT
- ⊕ - EXISTING HALIDE LIGHT
- ⊕ - EXISTING HPS FIXTURE
- ⊕ - EXISTING TELEPHONE/ DATA OUTLET

- ⊕ - DUPLEX OUTLET
- GFI ⊕ - DUPLEX GFI OUTLET
- W/P ⊕ - DUPLEX WEATHERPROOF GFI OUTLET
- GFI ⊕ - QUAD OUTLET
- 208V ⊕ - 208V OUTLET
- ⊕ - FUSED DISCONNECT
- [PNL] ⊕ - POWER, LIGHTING PANEL

- ⊕ - SWITCH
- ⊕ - DIMMER SWITCH
- ⊕ - 3 WAY SWITCH
- ⊕ - 2 X 4 FLUORESCENT FIXTURE (N* INDICATES NIGHT LIGHT- ALWAYS ON)
- ⊕ - CEILING MOUNTED FIXTURE
- ⊕ - EXTERIOR WALL SCONCE FIXTURE W/ 90 MIN. BATTERY BACKUP
- ⊕ - PENDANT LIGHT
- ⊕ - TRACK LIGHTING
- ⊕ - REVERSIBLE CEILING FAN (REVERSIBLE @ WALL SWITCH)
- ⊕ - EXTERIOR WALL SCONCE FIXTURE W. 90 MIN. BACKUP

- ⊕ - EXIT LIGHT W/ 90 MIN. BACKUP (ARROW INDICATES DIRECTIONAL EXIT SIGN)
- ⊕ - EXIT/ EMERGENCY LIGHT W/ 90 MIN. BATTERY BACKUP (ARROW INDICATES DIRECTIONAL EXIT SIGN)
- ⊕ - EMERGENCY LIGHT W/ 90 MIN. BACKUP
- ⊕ - CABLE TV OUTLET
- ⊕ - TELEPHONE OUTLET
- ⊕ - SMOKE DETECTOR
- ⊕ - VENT
- ⊕ - FIRE EXTINGUISHER AND CABINET- 10 LB. MULTI-USE



DAMMON ENGINEERING, INC.

CHIEF ENGINEER
EMMETT DAMMON, P.E.

CHIEF ARCHITECT
ROBERT WILTSE

1095 FLORIDA AVENUE
SLIDELL, LA. 70458
OFFICE: 985-649-5832
FAX: 985-641-5950

WEBSITE:
WWW.DAMMONENGINEERING.COM

EMAIL:
DAMMONENG@BELLSOUTH.NET

ARCHITECTURE
ENGINEERING
STUDIES
PLANNING
INVESTIGATION
EXPERT WITNESS

NORTHSHORE
CHURCH
KENSINGTON DR.
SLIDELL, LA

ZONE 4 POWER
& LIGHTING
PLAN

[Signature]

REV:03-23-09

SCALE: AS NOTED

JOB#: 1988

DATE: 09-30-08

SHEET

E-6

OF