

DAMMON ENGINEERING, INC.

CHIEF ENGINEER
EMMETT DAMMON, P.E.

CHIEF ARCHITECT
ROBERT WILTSE

554 OLD SPANISH TRAIL
SLIDELL, LA. 70458
OFFICE: 985-649-5832
FAX: 985-641-5950

WEBSITE:
WWW.DAMMONENGINEERING.COM

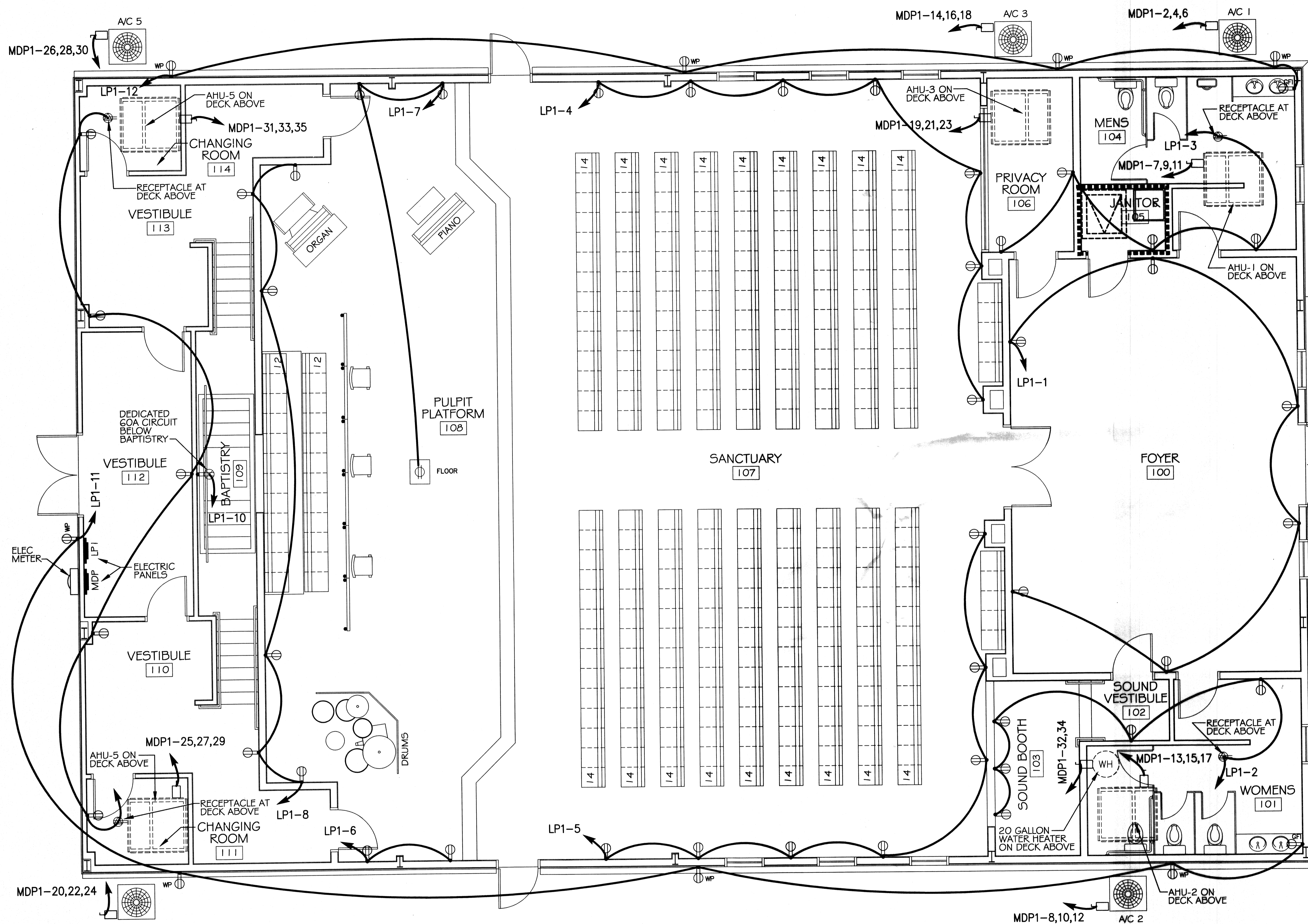
EMAIL:
DAMMONENG@BELLSOUTH.NET

ARCHITECTURE
ENGINEERING
STUDIES
PLANNING
INVESTIGATION
EXPERT WITNESS

NEW CHURCH

FIRST BAPTIST CHURCH
64541 HWY 3081
PEARL RIVER, LA
70452

POWER PLAN



LEGEND

- ⊕ - RECEPTACLE 20A 115V
- ⊕ - GFI RECEPTACLE 20A
- ⊕ - WEATHER PROOF GFI RECEPTACLE 20A
- ⊕ - RECEPTACLE 20A AT DECK ABOVE
- ⊕ - FLOOR RECEPTACLE 20A
- ⊕ - DEDICATED BAPTISTRY CIRCUIT IN WALL BENEATH BAPTISTRY, 20A 115V
- ⊕ - DISCONNECT
- ⊕ - POWER PANEL
- ⊕ - RATED WALL

ELECTRICAL POWER PLAN
SCALE: 1/4" = 1'

CLECO Power LLC - Electrical Load Summary

Project Name: First Baptist Church
Project Address: 64541 Highway 3081
City / Town: St. Tammany Parish - Pearl River, Louisiana

Intended Use: Church
Requested Service: 208/120 Volts 3Φ Phase 4 Wires
Service Entrance Size: 400 Amps
HVAC Tonnage: 37.5 Tons
Largest Motor: N/A HP (Note: Motors above 20 hp may require reduced Voltage starting and are never recommended for use with 120/240V, 3 Φ, 4W services.)

Total Building Square Footage: 5,700 Square Feet
Individual Unit Square Footage: N/A Square Feet (Multiple Occupancy)
Individual Unit Designation: N/A (Multiple Occupancy)

LOAD SOURCE	1Φ - kVA	3Φ - kVA	or	1Φ - kW	3Φ - kW
Building Lighting	-	13.8	or	-	-
Electric Water Heating	-	7.2	or	-	-
Heat Pumps	-	-	or	-	-
Supplemental Heat System	-	-	or	-	-
Air Conditioning	-	62.1	or	-	-
Electrical Heating (Primary) - AHUs	-	81.1	or	-	-
Cooking	-	-	or	-	-
Refrigeration	-	-	or	-	-
Receptacles (Standard)	-	9.6	or	-	-
Receptacles (Computer)	-	-	or	-	-
Total Motors (Exclude HVAC)	-	-	or	-	-
Parking Lot / Exterior Lighting	-	-	or	-	-
Miscellaneous	-	-	or	-	-
Other (Specify)	-	-	or	-	-

DATE: 09 2011
#30-7460
STATE OF LOUISIANA
AS PER REVIEWED BY JAMES T. BARNER

REV: Robert Wiltse

SCALE: AS NOTED

JOB#: 2108

DATE: 04-26-11

SHEET 11

E-1