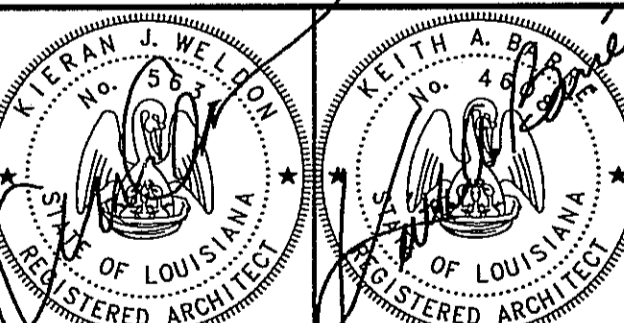
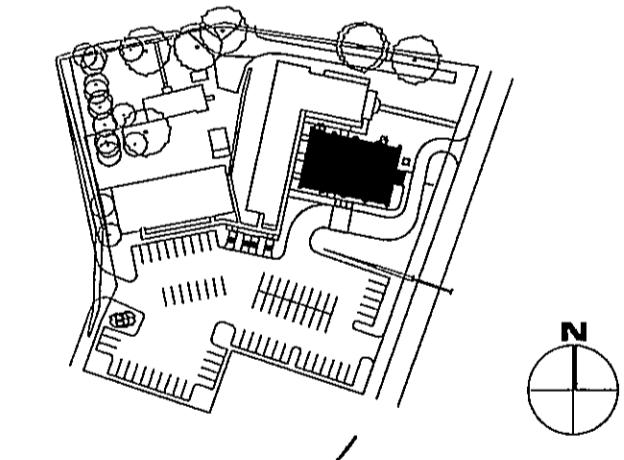


A NEW CHURCH BUILDING FOR
FIRST BAPTIST CHURCH PEARL RIVER

FIRST BAPTIST CHURCH
 64541 HIGHWAY 3081
 PEARL RIVER, LOUISIANA 70452

KEY PLAN - FLOOR



THESE DRAWINGS ARE THE SOLE PROPERTY OF FAUNTLEROY LATHAM WELDON BARRÉ ARCHITECTS, APC, AND ARE ISSUED AS INSTRUMENTS OF SERVICE. THESE DRAWINGS SHALL NOT BE COPIED, REPRODUCED OR USED IN ANY MANNER WITHOUT WRITTEN CONSENT OF FAUNTLEROY LATHAM WELDON BARRÉ ARCHITECTS, APC.

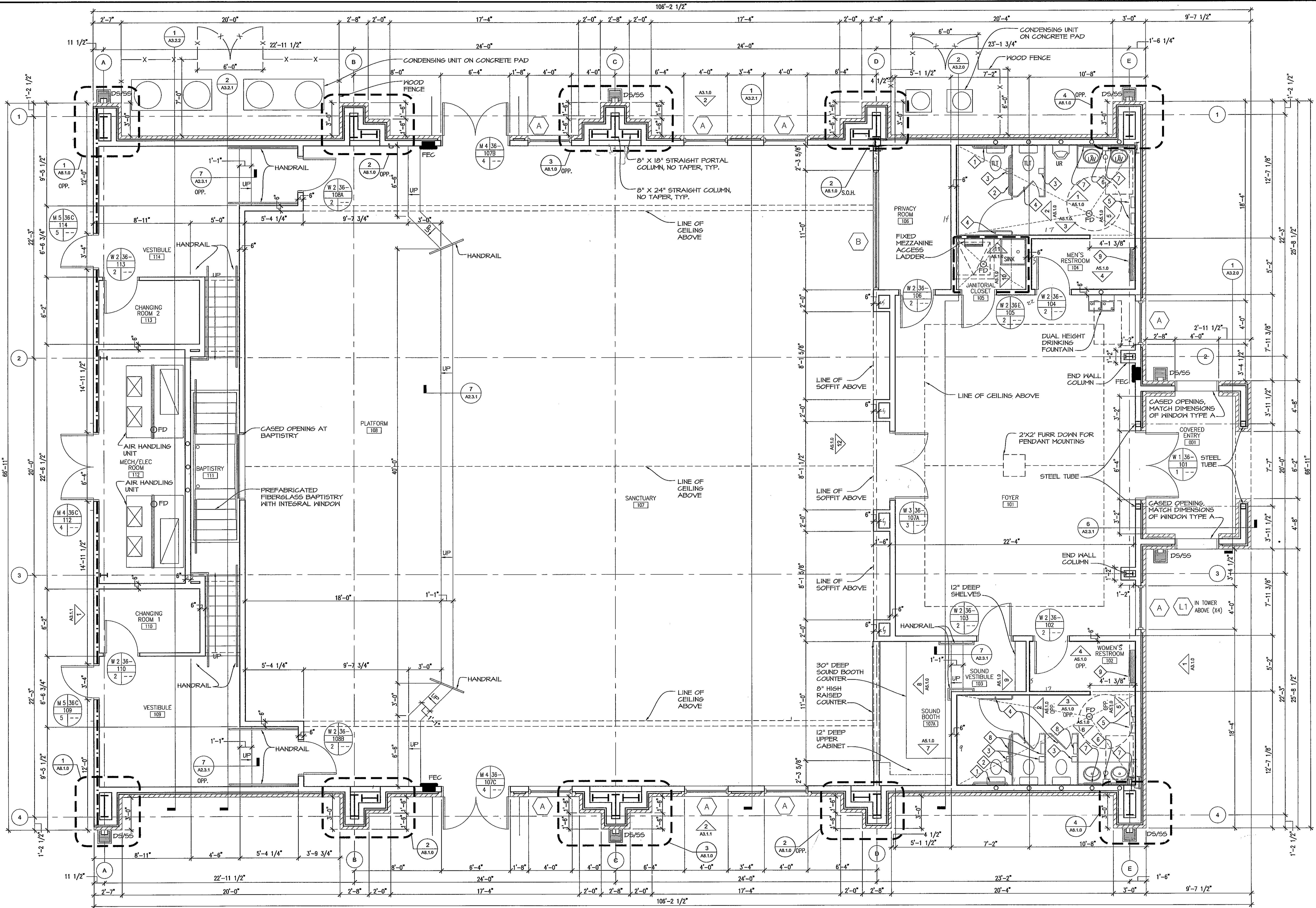
Issue	Date	Remark

FLOOR PLAN

CONSTRUCTION DOCUMENTS

Job No	209073.02	Sheet No	
Drawn by	NSP		
Checked by	KJW		
Date	18.JAN.11		

A2.1.0



1 FLOOR PLAN
 A2.1.0 SCALE: 1/4" = 1'-0"

- NOTES**
- CONNECT DOWNSPOUTS TO SUBSURFACE DRAINAGE.
 - ALL INTERIOR PARTITION WALLS TO EXTEND TO UNDERSIDE OF STRUCTURE EXCEPT WHERE WALLS ARE BEARING WALLS BELOW MEZZANINE. SEE HATCHED AREA SHEET A2.1.1.
 - ALL INTERIOR SMOKE PARTITIONS AND FIRE RATED PARTITIONS TO EXTEND TO UNDERSIDE OF ROOF DECK.

- LEGEND**
- METAL STUDS
 - BRICK
 - SMOKE PARTITION PER NFPA 8.4 AND IBC SECTION 710
 - 1 HOUR RATING - UL DESIGN NO. U419
 - 5/8" TYPE-X GYPSUM SHEATHING ON EXTERIOR SIDE, 5/8" TYPE-X GYPSUM BOARD ON INTERIOR SIDE

- TOILET ACCESSORIES: THIS SHEET ONLY**
- 1 36" GRAB BAR
 - 2 42" GRAB BAR
 - 3 TOILET PAPER DISPENSER, O.F.C.I.
 - 4 ROBE HOOK
 - 5 PAPER TOWEL DISPENSER, O.F.C.I.
 - 6 SOAP DISPENSER, O.F.C.I.
 - 7 18" X 36" MIRROR, STAINLESS STEEL FRAME
 - 8 SANITARY NAPKIN DISPOSAL
 - 9 BABY CHANGING STATION