

**DAMMON**  
ENGINEERING, INC.

CHIEF ENGINEER  
EMMETT  
DAMMON, P.E.

CHIEF ARCHITECT  
ROBERT  
WILTSE

554 OLD SPANISH TRAIL  
SLIDELL, LA. 70458  
OFFICE: 985-649-5832  
FAX: 985-641-5950

WEBSITE:  
WWW.DAMMONENGINEERING.COM

EMAIL:  
DAMMONENG@BELLSOUTH.NET

ARCHITECTURE

ENGINEERING

STUDIES

PLANNING

INVESTIGATION

EXPERT WITNESS

LIVING THE WORD  
INTERNATIONAL

2528  
OLD SPANISH TRAIL  
SLIDELL, LA  
70461

MECHANICAL  
PLAN

REV:

SCALE: AS NOTED

JOB#: 2128

DATE: XX-XX-07

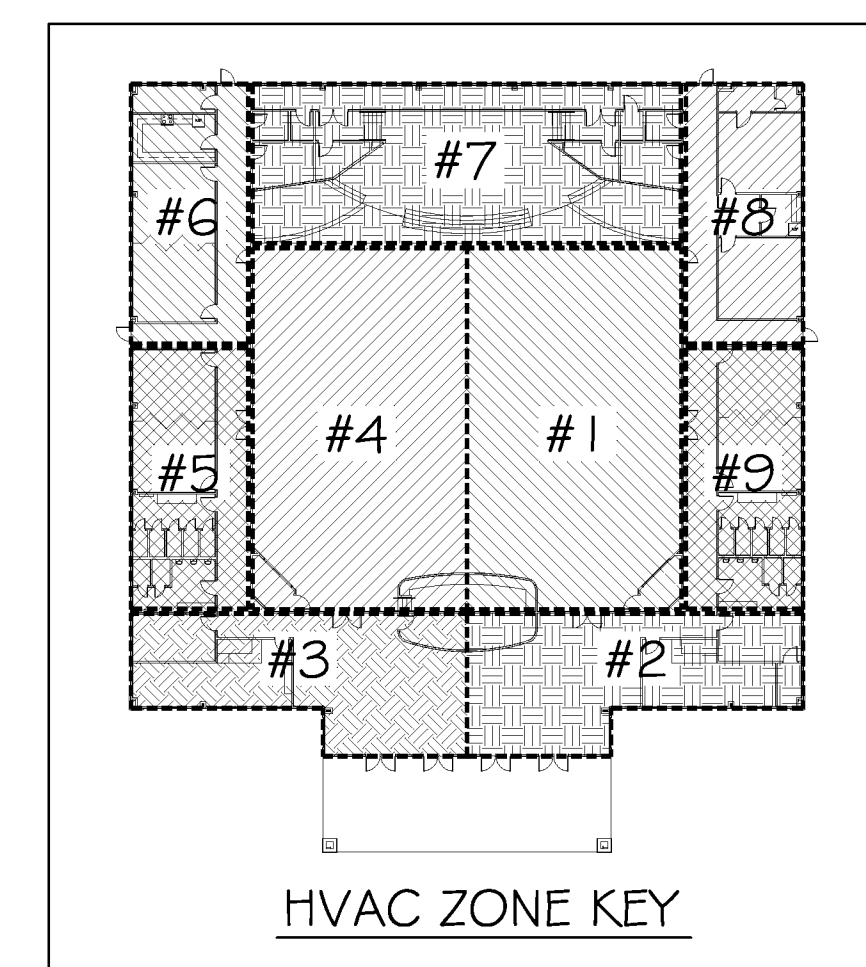
SHEET

M-1

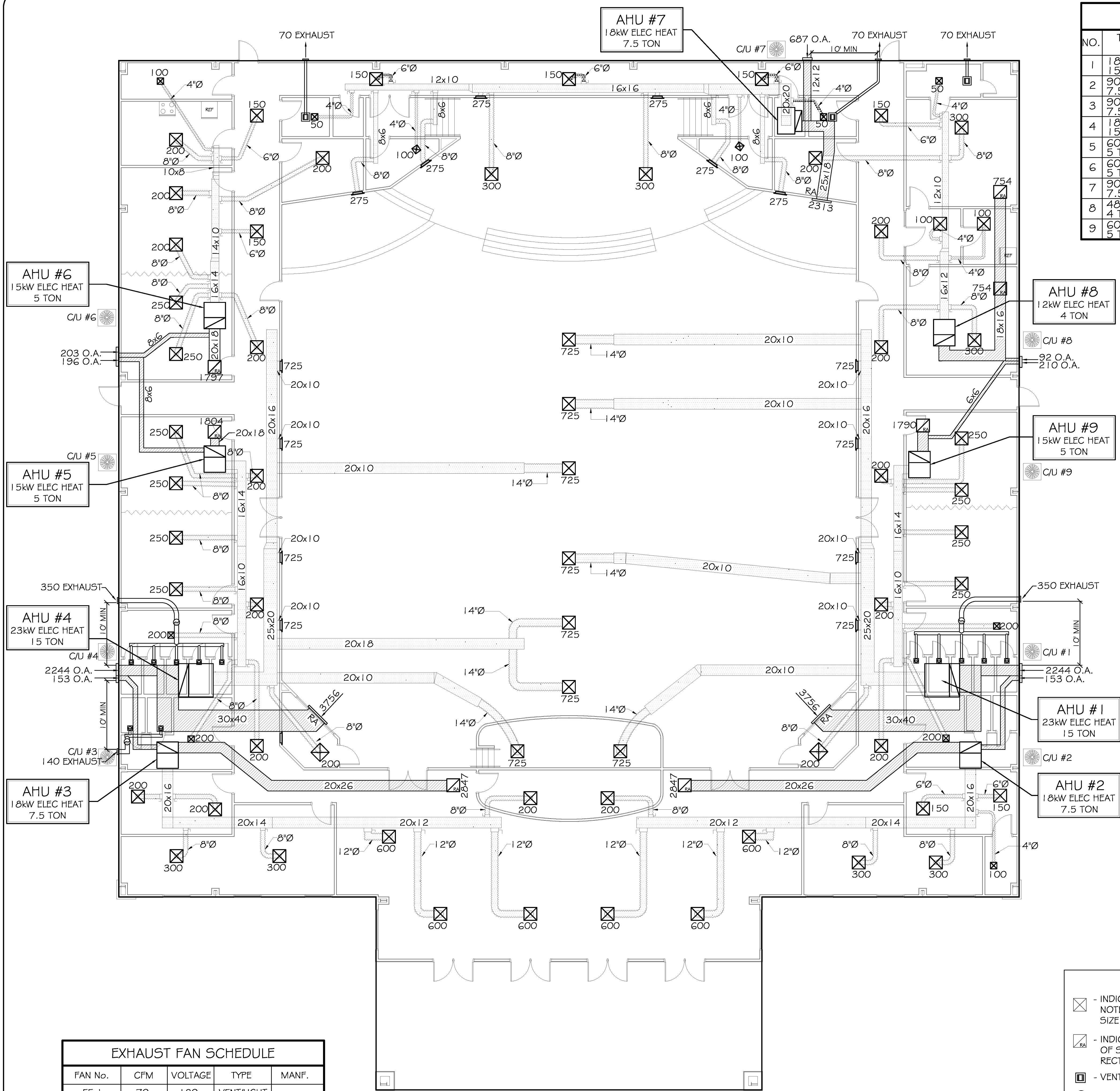
OF

| A/C UNIT SCHEDULE TOTAL HVAC TONS = 71.5 |                   |       |      |            |            |     |          |
|--|-------------------|-------|------|------------|------------|-----|----------|
| NO.                                      | TOTAL BTU         | CFM   | O.A. | HEAT ELEC. | ELECTRICAL |     | COMMENTS |
|  |                   |       |      |            | VOLTAGE    | MCA |          |
| 1  | 180,000<br>15 TON | 6,000 | 1170 | 23 KW      | 208V, 3Ø   | -   | PNLI     |
| 2  | 90,000<br>7.5 TON | 3,000 | 153  | 18 KW      | 208V, 3Ø   | -   |          |
| 3  | 90,000<br>7.5 TON | 3,000 | 153  | 18 KW      | 208V, 3Ø   | -   |          |
| 4  | 180,000<br>15 TON | 6,000 | 1170 | 23 KW      | 208V, 3Ø   | -   |          |
| 5  | 60,000<br>5 TON   | 2,000 | 196  | 15 KW      | 208V, 3Ø   | -   |          |
| 6  | 60,000<br>5 TON   | 2,000 | 203  | 15 KW      | 208V, 3Ø   | -   |          |
| 7  | 90,000<br>7.5 TON | 3,000 | 687  | 18 KW      | 208V, 3Ø   | -   |          |
| 8  | 48,000<br>4 TON   | 1,600 | 91   | 15 KW      | 208V, 3Ø   | -   |          |
| 9  | 60,000<br>5 TON   | 2,000 | 210  | 15 KW      | 208V, 3Ø   | -   |          |

| FRESH AIR REQUIREMENTS<br>PER IMC 2009 TABLE 403.3 |      |                 |             |            |          |  |
|--|------|-----------------|-------------|------------|----------|--|
| ROOM NAME  | SF   | OCC/<br>1000 SF | CFM/<br>OCC | CFM/<br>SF | TOTAL OA |  |
| AHU #1   |      |                 |             |            | 1170     |  |
| SANCTUARY  | 1772 | 120             | 5           | 0.06       | 1170     |  |
| AHU #2   |      |                 |             |            | 153      |  |
| OFFICES  | 500  | 5               | 5           | 0.06       | 43       |  |
| MAIN ENTRY   | 1000 | 10              | 5           | 0.06       | 110      |  |
| AHU #3   |      |                 |             |            | 153      |  |
| OFFICES  | 500  | 5               | 5           | 0.06       | 43       |  |
| MAIN ENTRY   | 1000 | 10              | 5           | 0.06       | 110      |  |
| AHU #4   |      |                 |             |            | 1170     |  |
| SANCTUARY  | 1772 | 120             | 5           | 0.06       | 1170     |  |
| AHU #5   |      |                 |             |            | 196      |  |
| CONFERENCE RM                                      | 510  | 50              | 5           | 0.06       | 160      |  |
| CORRIDOR   | 600  | -               | -           | 0.06       | 36       |  |
| AHU #6   |      |                 |             |            | 203      |  |
| CONFERENCE RM                                      | 560  | 50              | 5           | 0.06       | 174      |  |
| CORRIDOR   | 340  | -               | -           | 0.06       | 20       |  |
| OFFICES  | 110  | 5               | 5           | 0.06       | 9        |  |
| AHU #7   |      |                 |             |            | 687      |  |
| STAGE  | 1000 | 120             | 5           | 0.06       | 660      |  |
| CORRIDOR   | 450  | -               | -           | 0.06       | 27       |  |
| AHU #8   |      |                 |             |            | 91       |  |
| CORRIDOR   | 340  | -               | -           | 0.06       | 21       |  |
| OFFICES  | 825  | 5               | 5           | 0.06       | 70       |  |
| AHU #9   |      |                 |             |            | 210      |  |
| CONFERENCE RM                                      | 520  | 50              | 5           | 0.06       | 174      |  |
| CORRIDOR   | 600  | -               | -           | 0.06       | 36       |  |



| LEGEND |  |
|--------|--|
| ⊠      | - INDICATES NEW CEILING DIFFUSER - CFM AS NOTED - 24x24 UNLESS OTHERWISE NOTED. SIZE INDICATES NECK SIZE       |
| ⊡      | - INDICATES NEW RETURN AIR CEILING GRILLE OF SIZE INDICATED. TRANSFER DUCT TO BE RECTANGULAR AS INDICATED.     |
| ⊞      | - VENT / LIGHT COMBINATION   |
| ⊕      | - THERMOSTAT   |
| ▭      | - INDICATES NEW SHEET METAL DUCTWORK FOR SUPPLY AIR, SIZES INDICATED ARE SHEET METAL DIMENSIONS                |
| ▨      | - INDICATES NEW SHEET METAL DUCTWORK FOR RETURN AIR, SIZES INDICATED ARE SHEET METAL DIMENSIONS                |
| —      | - ROUND FLEX DUCT, MAX. LENGTH 12'-0", MIN. R-6 PROVIDE MAN. DAMPER AT DIFFUSER CONNECTIONS, SIZE AS INDICATED |
| ⊙      | - A/C UNIT   |



| EXHAUST FAN SCHEDULE |     |         |            |       |
|----------------------|-----|---------|------------|-------|
| FAN No.              | CFM | VOLTAGE | TYPE       | MANF. |
| EF-1                 | 70  | 120     | VENT/LIGHT |       |

MECHANICAL PLAN  
SCALE: 1/8" = 1'-0"