

DAMMON
ENGINEERING, INC.

CHIEF ENGINEER
EMMETT
DAMMON, P.E.

CHIEF ARCHITECT
ROBERT
WILTSE

554 OLD SPANISH TRAIL
SLIDELL, LA, 70458
OFFICE: 985-649-5832
FAX: 985-641-5950

WEBSITE: WWW.DAMMONENGINEERING.COM
EMAIL: DAMMONENG@BELL-SOUTH.NET

ARCHITECTURE
ENGINEERING
STUDIES
PLANNING

INVESTIGATION
EXPERT WITNESS

LIVING THE WORD
INTERNATIONAL

25228

OLD SPANISH TRAIL
SLIDELL, LA
70461

BUILDING
SECTION

REV:

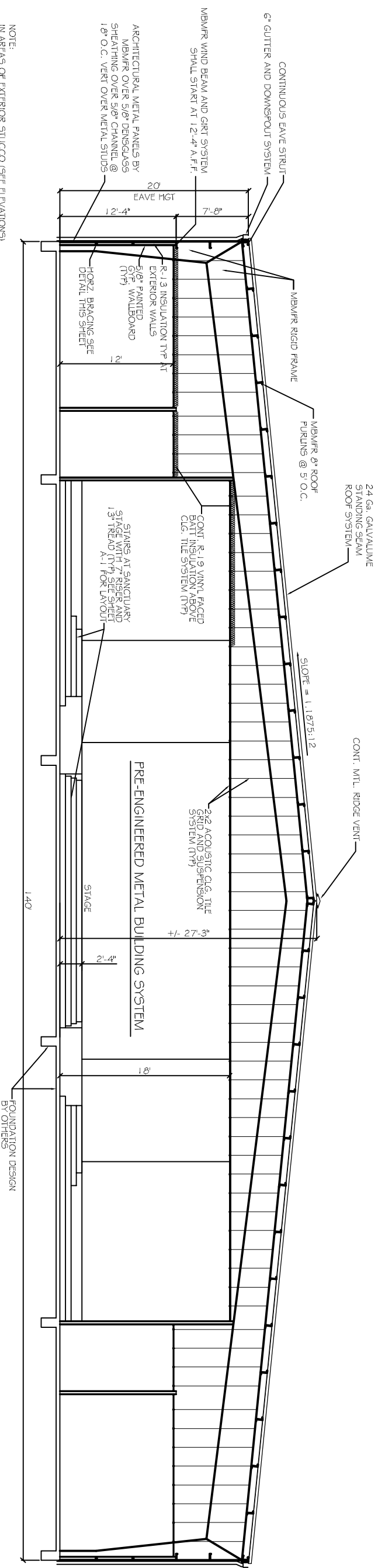
SCALE: AS NOTED

JOB#: 2128

DATE: 01-27-12

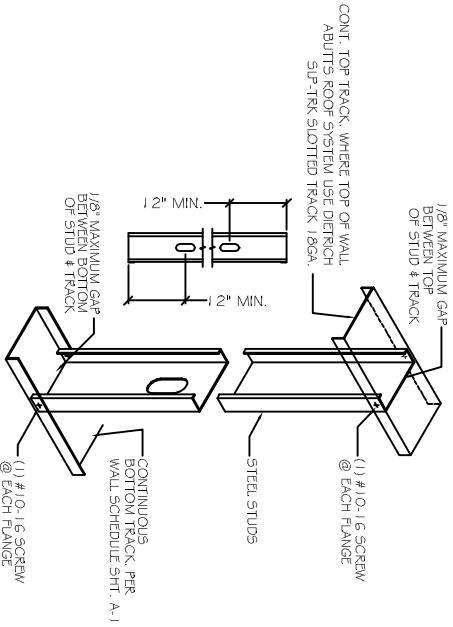
SHEET 4

A-2

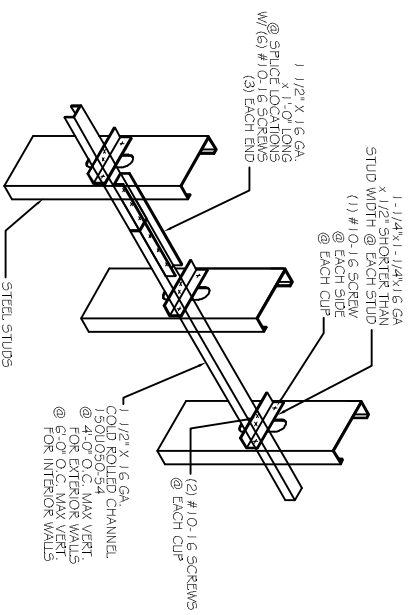


NOTE:
IN AREAS OF EXTERIOR STUCCO (SEE ELEVATIONS)
PROVIDE WALL SYSTEM AS FOLLOWS. SYNTHETIC
STUCCO FINISH OVER TYVEK STUCCO WRAP OVER
DENSGLASS, OVER METAL STUD WALL SYSTEM.

SECTION
SCALE: 3/16"=1'-0"
A
A1/A2



TRACK CONNECTION DETAIL
SCALE: N.T.S.

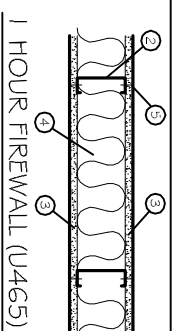


HORZ. BRACING DETAIL
SCALE: N.T.S.

**WINDBORNE DEBRIS PROTECTION
FASTENING SCHEDULE FOR
WOOD STRUCTURAL PANELS**

FASTENER TYPE	FASTENER SPACING		
	PANEL SPAN ≤ 4 FOOT	PANEL SPAN ≤ 6 FOOT	PANEL SPAN ≤ 8 FOOT
2-1/2" #6 WOOD SCREWS	16"	12"	9"
2-1/2" #8 WOOD SCREWS	16"	16"	12"

WINDOWS IN BUILDINGS LOCATED IN WIND BORNE DEBRIS REGIONS SHALL HAVE GLAZED OPENINGS PROTECTED FROM WINDBORNE DEBRIS. WOOD STRUCTURAL PANELS WITH A MIN. THICKNESS OF 7/16" AND A MAX. SPAN OF 8 FEET SHALL BE PERMITTED FOR OPENING PROTECTION IN ONE AND TWO STORY BUILDINGS. PANELS SHALL BE PRECUT TO COVER THE GLAZED OPENINGS WITH ATTACHMENT HARDWARE PROVIDED.



1 HOUR FIREWALL (U465)

- U465
- FLOOR AND CEILING RUNNER: (NOT SHOWN) 25 MSG. MIN. GALV. STEEL, 1" HIGH, RETURN LEGS 3-5/8" (MIN), ATTACHED TO FLOOR AND CEILING WITH FASTENERS AT 24" O.C.
 - STEEL STUDS: 3-5/8" WIDE (MIN.), 1-1/4" LEGS, 3/8" RETURN, FORMED OF 25 MSG GALV. STEEL, MAX. SPACING 24" O.C.
 - Gypsum WALLBOARD: 5/8" THICK, 4" WIDE, ATTACHED TO STEEL STUDS AND FLOOR AND CEILING TRACK WITH 1" LONG TYPE 'S' SELF-TAPPING STEEL SCREWS SPACED 8" O.C. ALONG EDGES OF BOARD AND 12" O.C. IN THE FIELD OF THE BOARD. JOINTS ORIENTED VERT. AND STAGGERED ON OPPOSITE SIDES OF THE ASSEMBLY.
 - BATTS AND BLANKETS: MINERAL WOOL INSULATION, PARTIALLY OR COMPLETELY FILLING STUD CAVITY.
 - JOINT AND TAPE COMPOUND: VINYL DRY OR PREMIXED JOINT COMPOUND, APPLIED IN TWO COATS TO JOINTS AND SCREW HEADS; PAPER TAPE, 2" WIDE, EMBEDDED IN FIRST LAYER OF COMPOUND OVER ALL JOINTS, AS AN ALTERNATE, NOMINAL 3/32" THICK GYPSUM VENEER PLASTER MAY BE APPLIED TO THE ENTIRE SURFACE OF CLASSIFIED VENEER BASEBOARD. JOINT REINFORCED.