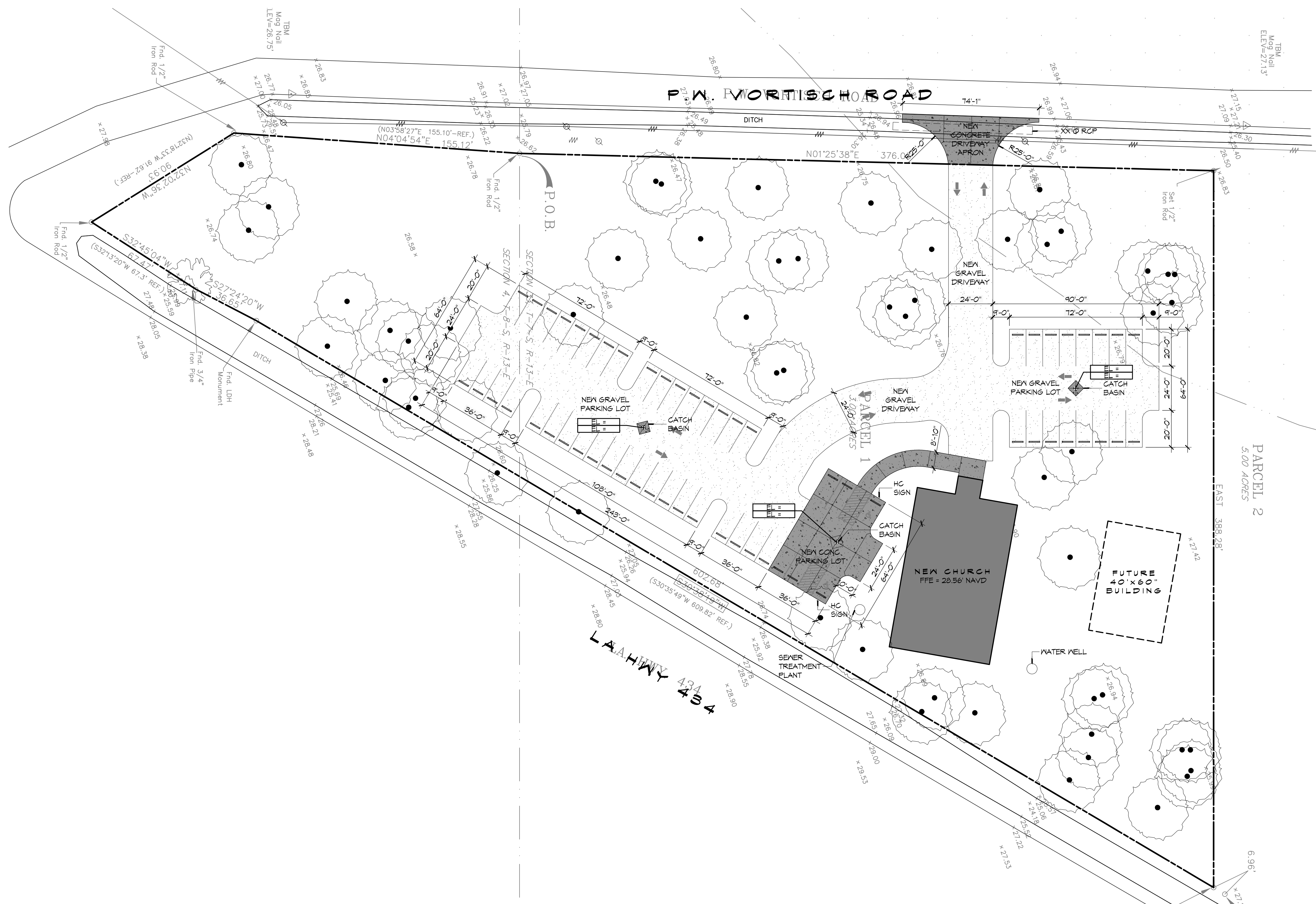


FILE NAME: J:\CADD\2015\LA 234\234.dwg PLOT DATE: 8/1/2015 PLOT TIME: 10:56:40 AM



1 SITE PLAN
SCALE: 1" = 30'

GENERAL SITE NOTES

- ALL NEW SITE GRADING SHALL PROMOTE POSITIVE DRAINAGE AWAY FROM BUILDING AND NEW SIDEWALKS TOWARD NEW AND EXISTING CATCH BASINS AND NOT CAUSE FONDING OF STORM WATER.

GENERAL SITE PAVING NOTES

- ALL NEW CONCRETE SHALL HAVE A MINIMUM COMPRESSIVE STRENGTH OF 4,000 PSI AT 28 DAYS AND A MINIMUM THICKNESS OF 6". CONCRETE MIX SHALL BE IN ACCORDANCE WITH THE LATEST REVISION OF ASTM C-150 TYPE I.
- CONCRETE PAVING THICKNESS SHALL VARY AS FOLLOWS:
 - APRONS & LOADING AREAS = 8" THICKNESS
 - DRIVE LANES & PARKING AREAS = 6" THICKNESS
- ALL REINFORCING STEEL SHALL MEET ASTM-A615 (GRADE 60).
- ALL REINFORCING STEEL SHALL BE SECURELY SUPPORTED TO PREVENT BOTH VERTICAL AND HORIZONTAL MOVEMENT DURING CONCRETE PLACEMENT. ALL CONTROL AND EXPANSION JOINTS SHALL BE LOCATED AND INSTALLED AS SHOWN ON THE PAVING PLAN AND IN ACCORDANCE WITH THE MANUFACTURER'S RECOMMENDATIONS.
- ALL SUB GRADE FILL SHALL BE SELECT GRANULAR MATERIAL COMPACTED TO 95% STANDARD PROCTOR DENSITY IN A MAXIMUM OF 6" LIFTS.
- CONTRACTOR SHALL CONTACT THEIR REGULATORY DEPARTMENT OF ENGINEERING PRIOR TO CONDUCTING ANY WORK.
- ANY WORK WITHIN THE ROADWAY OR ADJACENT TO THE ROADWAY CAUSING AN INTERFERENCE TO VEHICULAR TRAFFIC MUST CONFORM TO THE REQUIREMENTS SET FORTH BY THE UNIFORM MANUAL OF TRAFFIC CONTROL DEVICES OF THE STATE OF LOUISIANA. THE CONTRACTOR MUST FURNISH ALL NECESSARY TRAFFIC SIGNS AND/OR BARRICADES AND MAINTAIN THEM DURING CONSTRUCTION ACTIVITY.
- SEE SHEET P103 FOR SCHEDULED CATCH BASINS.

DAMMON ENGINEERING, INC.
Architects & Engineers
www.dammonengineering.com
info@dammonengineering.com
554 Old Spanish Trail
Slidell, LA 70568
PH: 985.649.5832
F: 985.641.5990

#	DESCRIPTION	DATE

SEAL:

NEW CHURCH

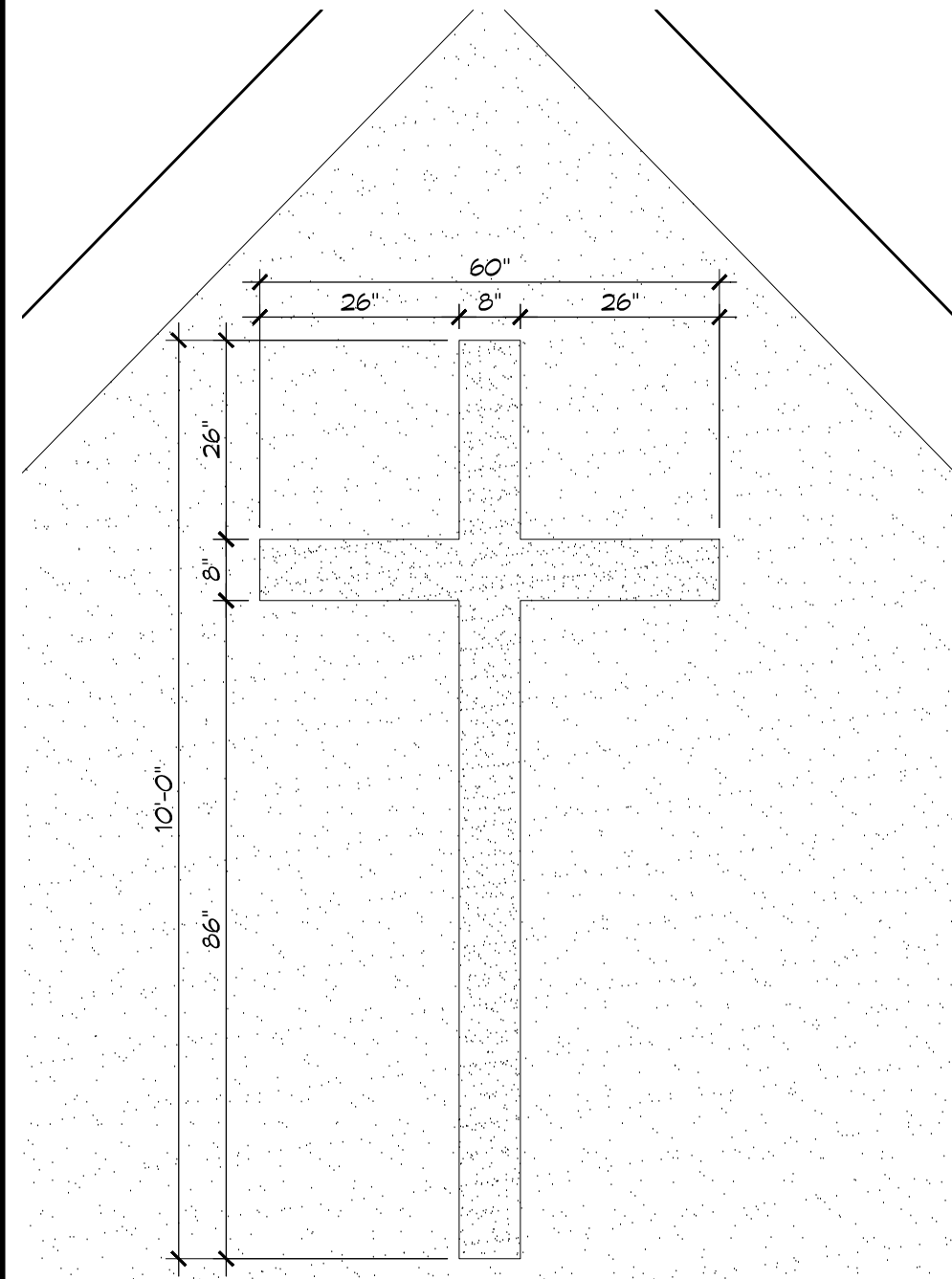
PA VORTECH ROAD AND LA HWY 434
LACROSSE, LOUISIANA 70448
JOB No: 2250 DATE: AUGUST 6, 2015
DRAWN BY: JTL CHECKED BY: CKD

SHEET TITLE:
SITE PLAN

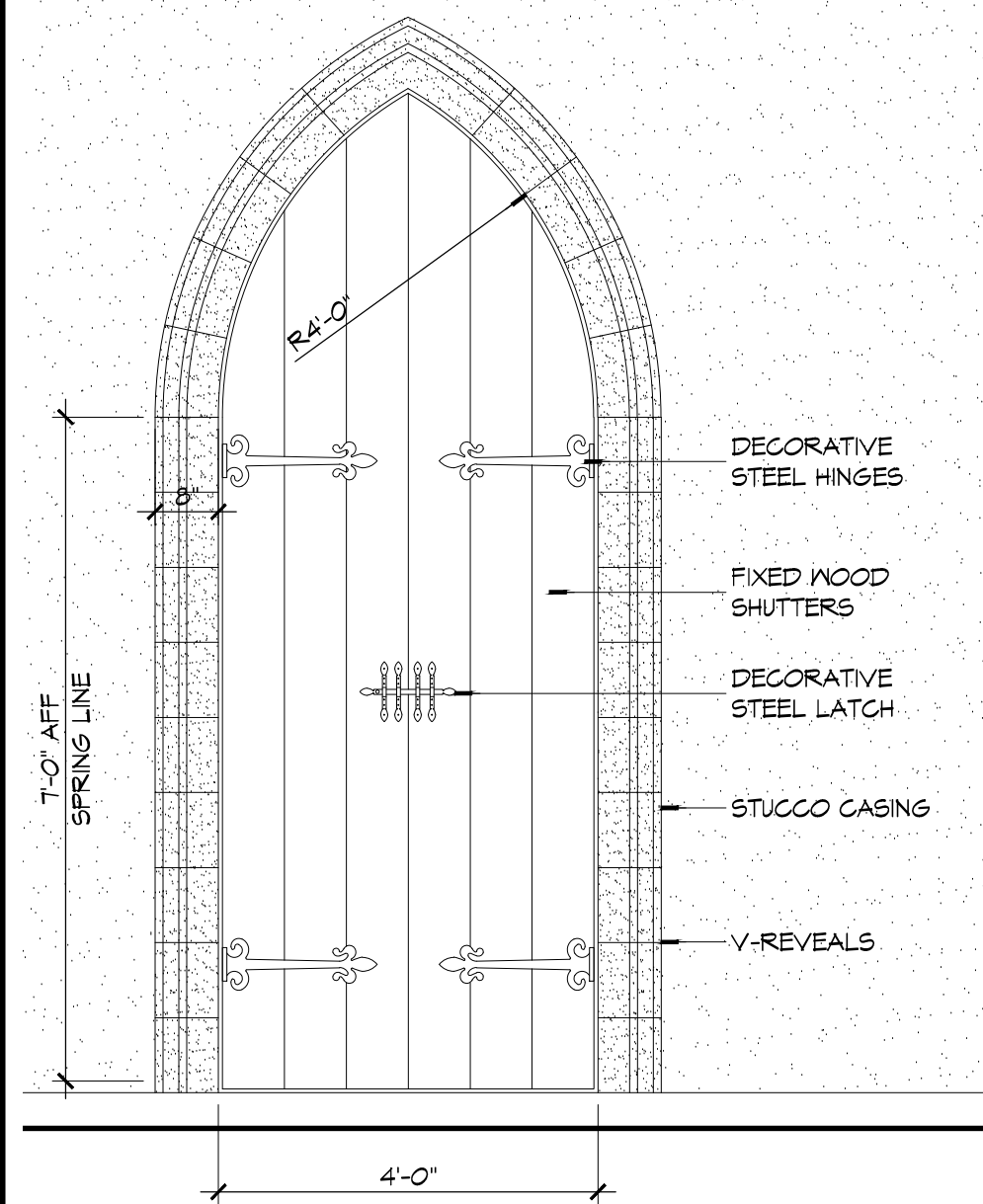
DRAWING NUMBER:
C101

SHEET No: Value of 17

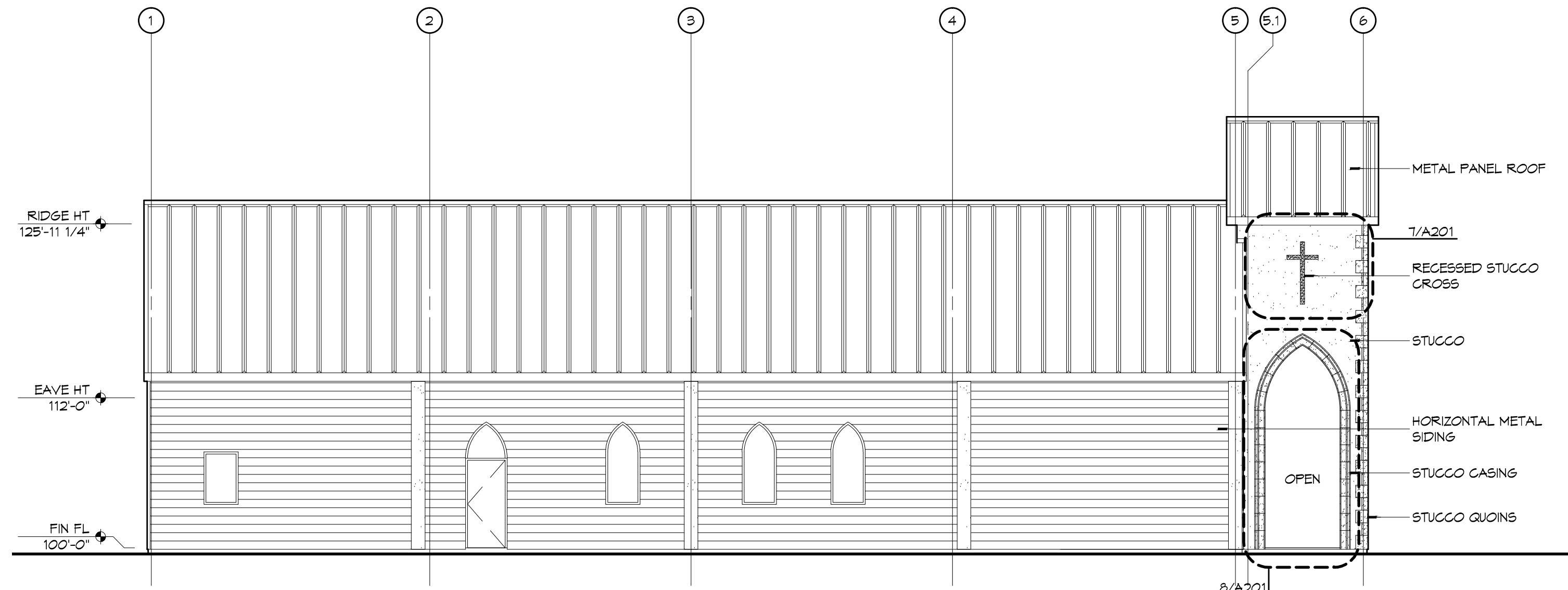
FILE NAME: ... 04/08/2015 12:05:42 PM ...



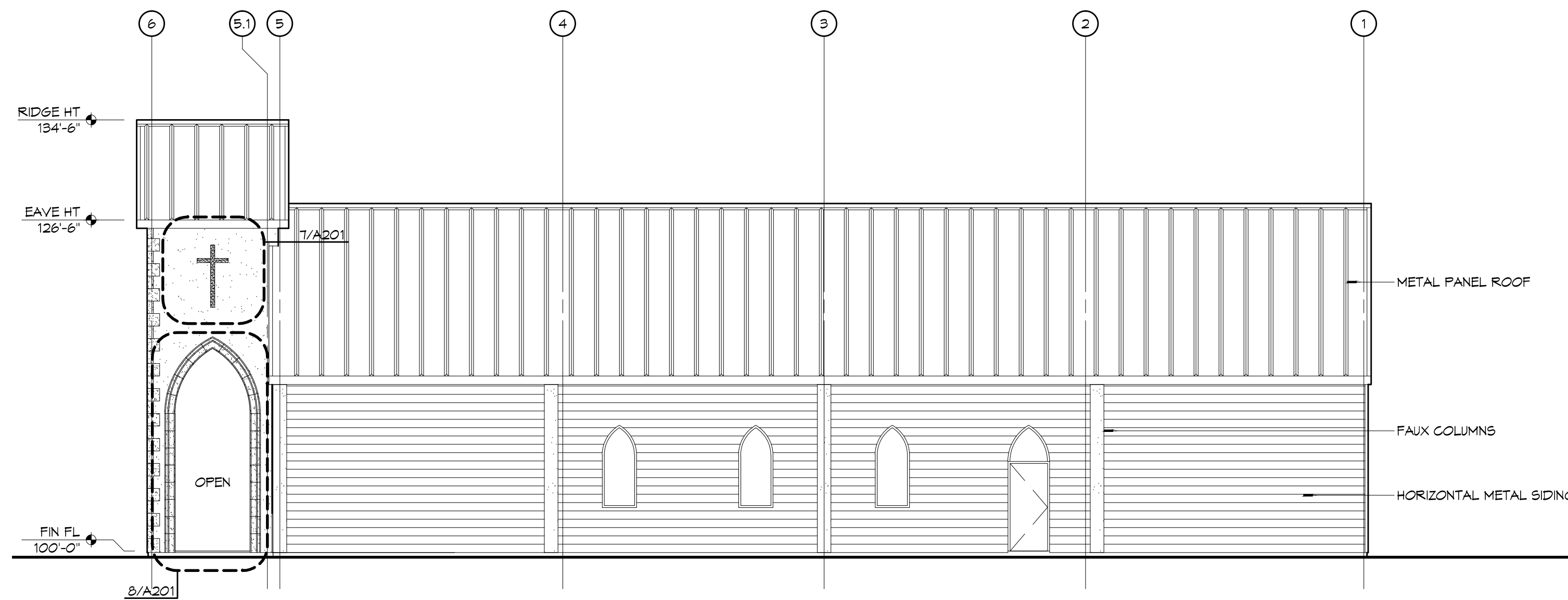
6 ELEV DETAIL
SCALE: 1/2" = 1'-0" LARGE CROSS



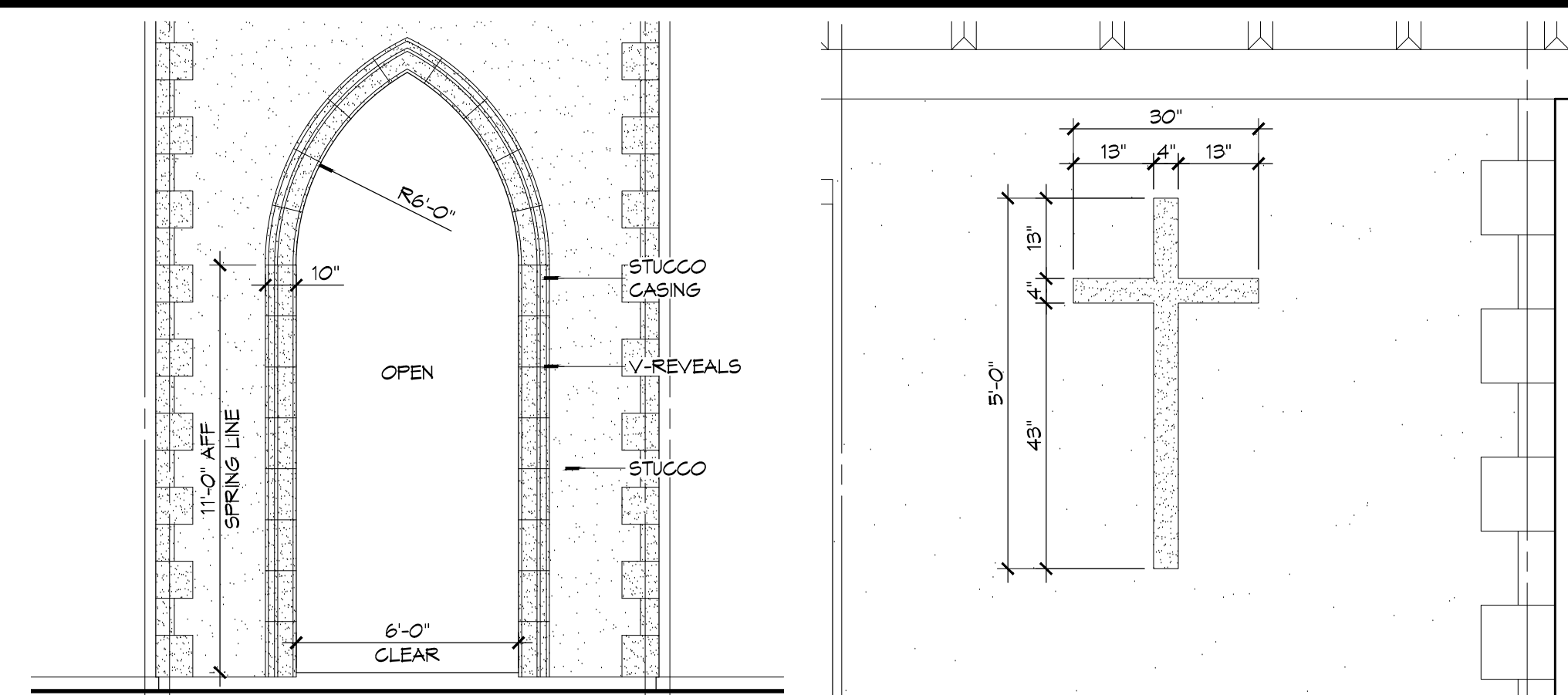
3 ELEV DETAIL
SCALE: 1/2" = 1'-0" TYPICAL FAUX SHUTTER



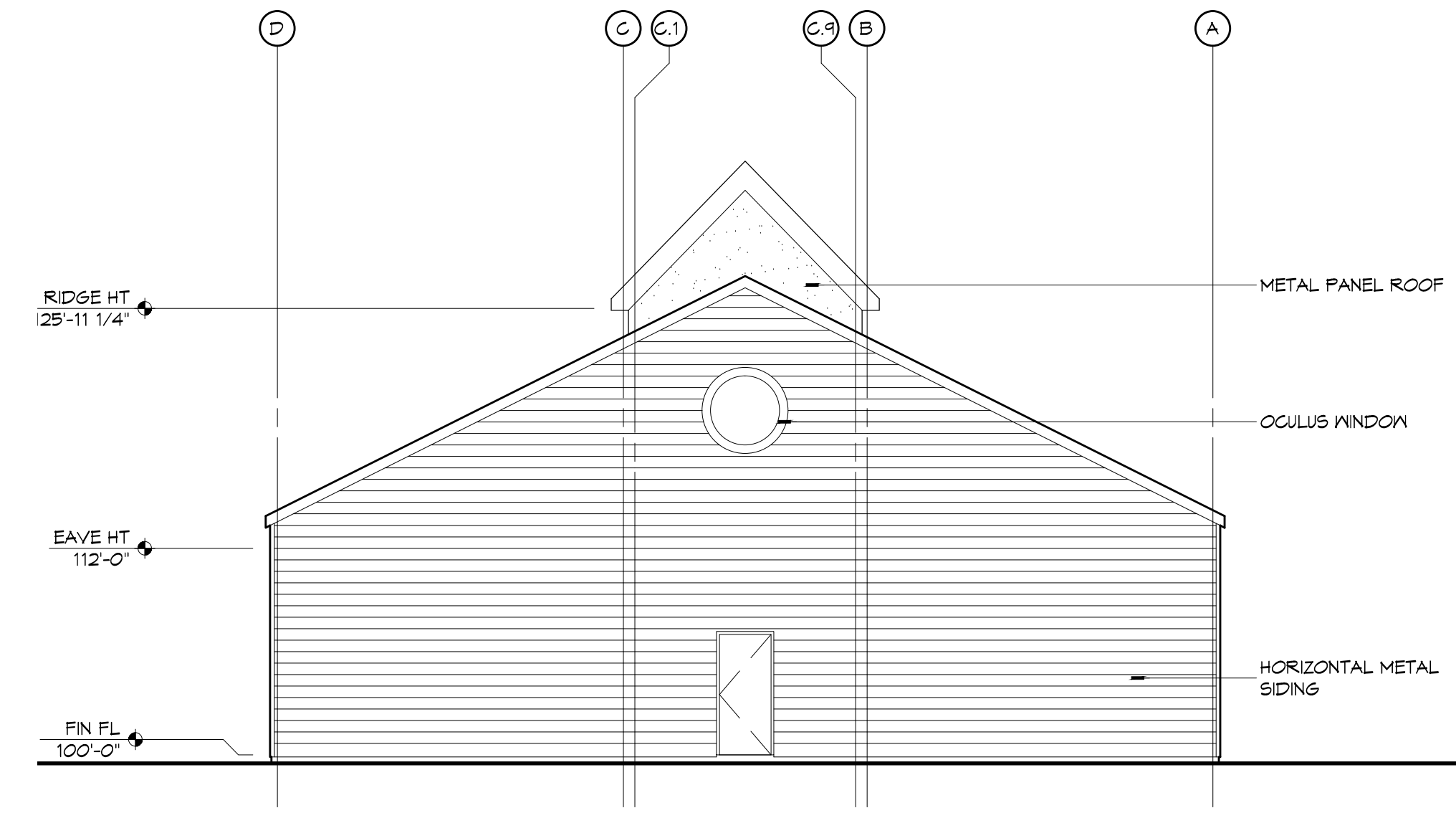
5 EXTERIOR ELEVATION
SCALE: 1/8" = 1'-0" SOUTH



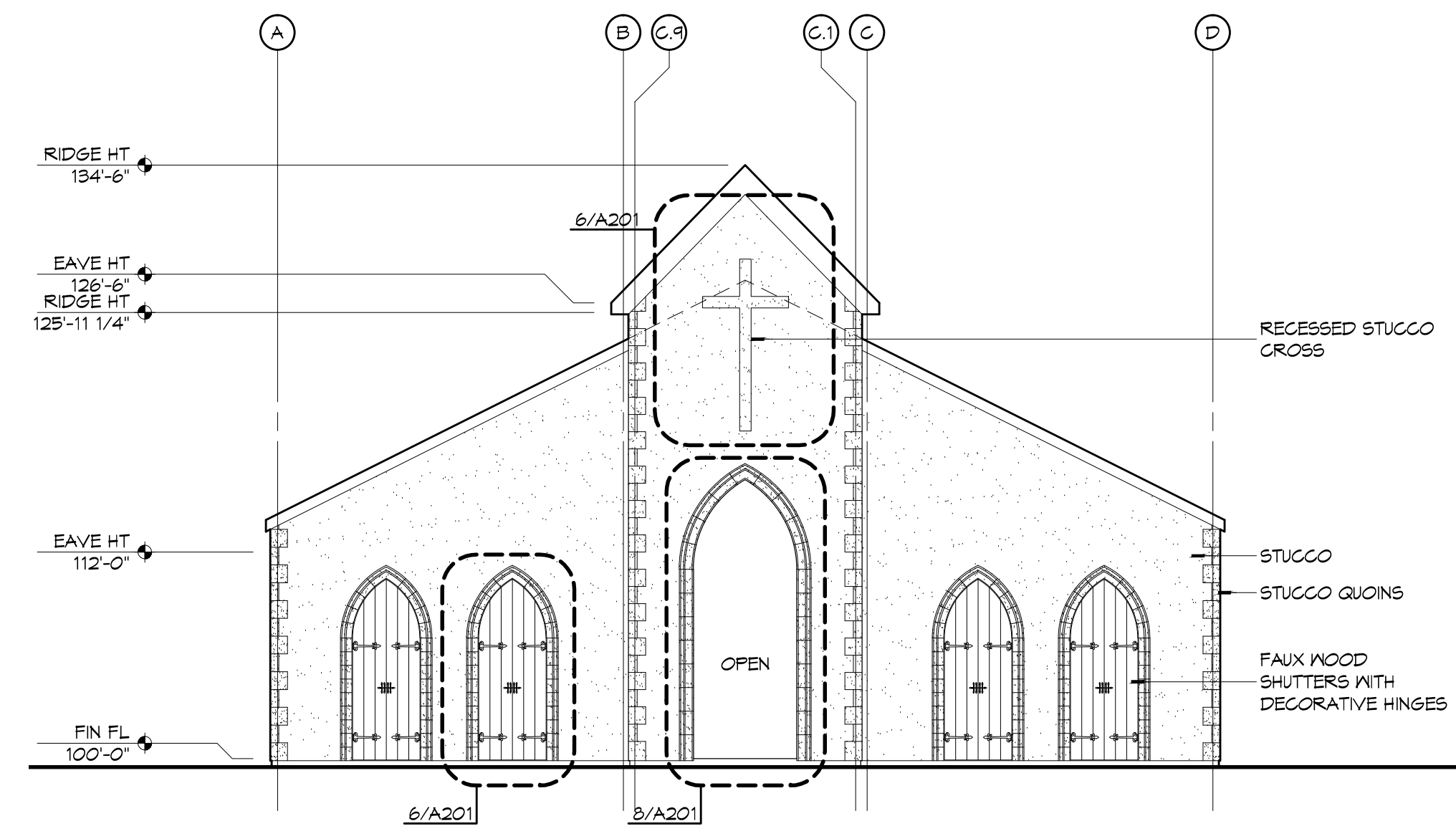
2 EXTERIOR ELEVATION
SCALE: 1/8" = 1'-0" NORTH



8 ELEV DETAIL SCALE: 1/4" = 1'-0" ENTRY ARCH
7 ELEV DETAIL SCALE: 1/2" = 1'-0" SMALL CROSS



4 EXTERIOR ELEVATION
SCALE: 1/8" = 1'-0" WEST



1 EXTERIOR ELEVATION
SCALE: 1/8" = 1'-0" EAST

DAMMON
 ENGINEERING, INC.
 Architects & Engineers
 www.dammonengineering.com
 info@dammonengineering.com
 Chief Architect: Kevin J. Kinchen, NCBAB
 Chief Engineer: Brian W. Mischen, PE
 554 Old Spanish Trail
 Slidell, LA 70568
 PH: 985.649.5832
 F: 985.641.5990

#	DESCRIPTION	DATE

SEAL:

NEW CHURCH
 PA VORETSCH ROAD AND LA HWY 494
 LA CROSSE, LOUISIANA 70448
 JOB No: 2250
 DATE: AUGUST 6, 2015
 DRAWN BY: KJK
 CHECKED BY: KJK

SHEET TITLE:
 EXTERIOR ELEVATIONS
 DRAWING NUMBER:
A201
 SHEET No: VALUE of 17

