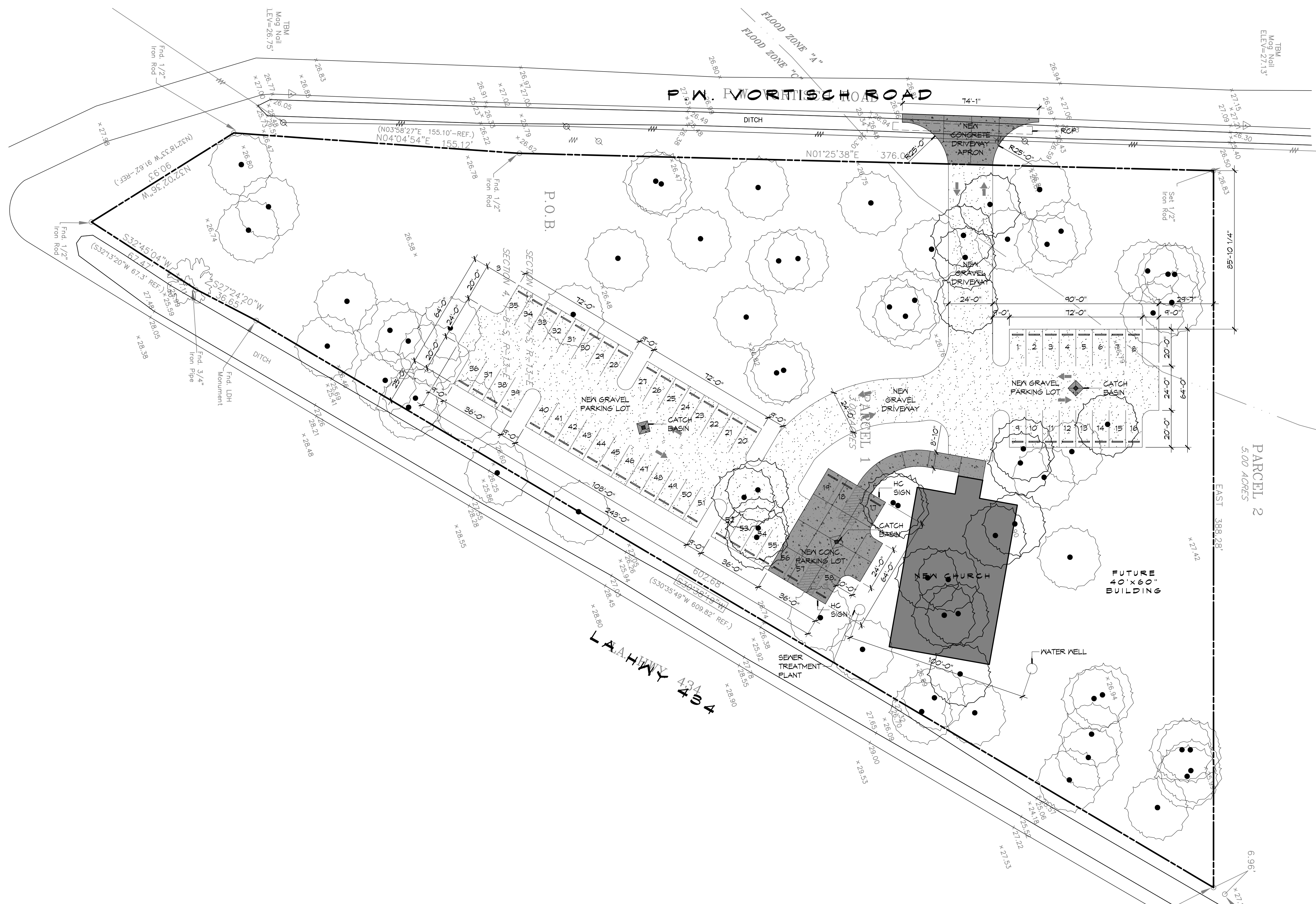


DATE PLOTTED: 11/17/2015 10:58:00 AM; PLOTNAME: C:\Users\jmc\Documents\Projects\C101 - MULTISITE CHAPEL.dwg; PLOTSCALE: 1/8"=1'-0"; PLOTORIENT: Landscape; PLOTSTATUS: OK



GENERAL SITE NOTES

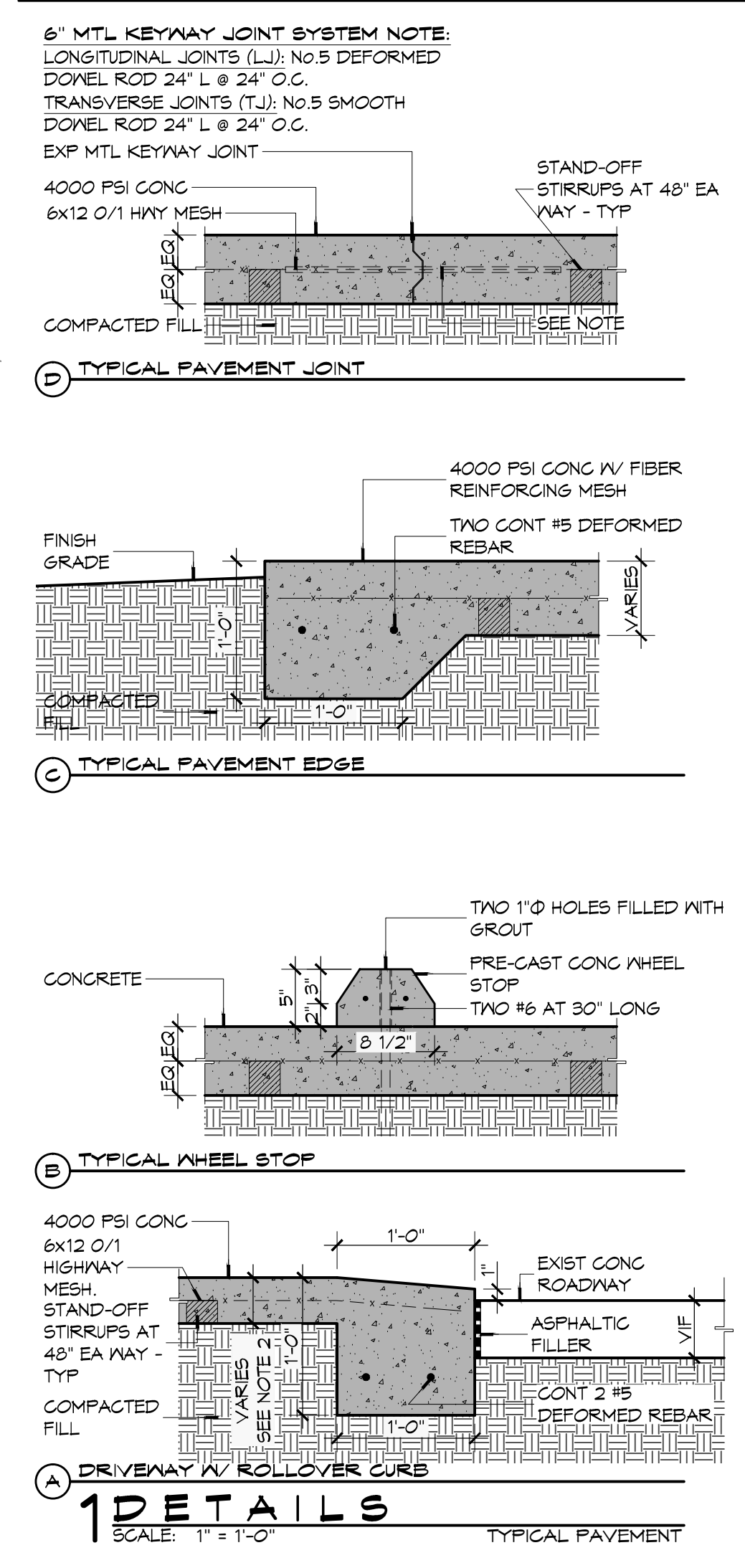
- ALL NEW SITE GRADING SHALL PROMOTE POSITIVE DRAINAGE AWAY FROM BUILDING AND NEW SIDEWALKS TOWARD NEW AND EXISTING CATCH BASINS AND NOT CAUSE FONDING OF STORM WATER.
- SEE SHEET C102 FOR FINISH GRADE ELEVATIONS AND DIRECTION OF SLOPE.

PARKING REQUIREMENTS

1 SPACE PER 4 OCCUPANTS
 192 SEATS / 4 = 48 PARKING SPACES REQUIRED
 2 HANDICAP PARKING SPACES PROVIDED
 56 REGULAR PARKING SPACES PROVIDED
 TOTAL PARKING SPACES PROVIDED 58

GENERAL SITE PAVING NOTES

- ALL NEW CONCRETE SHALL HAVE A MINIMUM COMPRESSIVE STRENGTH OF 4,000 PSI AT 28 DAYS AND A MINIMUM THICKNESS OF 6". CONCRETE MIX SHALL BE IN ACCORDANCE WITH THE LATEST REVISION OF ASTM C-150 TYPE I.
- CONCRETE PAVING THICKNESS SHALL VARY AS FOLLOWS:
 - DRIVE LANES & PARKING AREAS = 6" THICKNESS
- ALL REINFORCING STEEL SHALL MEET ASTM-A615 (GRADE 60).
- ALL REINFORCING STEEL SHALL BE SECURELY SUPPORTED TO PREVENT BOTH VERTICAL AND HORIZONTAL MOVEMENT DURING CONCRETE PLACEMENT. ALL CONTROL AND EXPANSION JOINTS SHALL BE LOCATED AND INSTALLED AS SHOWN ON THE PAVING PLAN AND IN ACCORDANCE WITH THE MANUFACTURER'S RECOMMENDATIONS.
- ALL SUB GRADE FILL SHALL BE SELECT GRANULAR MATERIAL COMPACTED TO 95% STANDARD PROCTOR DENSITY IN A MAXIMUM OF 6" LIFTS.
- CONTRACTOR SHALL CONTACT THEIR REGULATORY DEPARTMENT OF ENGINEERING PRIOR TO CONDUCTING ANY WORK.
- ANY WORK WITHIN THE ROADWAY OR ADJACENT TO THE ROADWAY CAUSING AN INTERFERENCE TO VEHICULAR TRAFFIC MUST CONFORM TO THE REQUIREMENTS SET FORTH BY THE UNIFORM MANUAL OF TRAFFIC CONTROL DEVICES OF THE STATE OF LOUISIANA. THE CONTRACTOR MUST FURNISH ALL NECESSARY TRAFFIC SIGNS AND/OR BARRICADES AND MAINTAIN THEM DURING CONSTRUCTION ACTIVITY.
- SEE SHEET C102 FOR TOP OF CONCRETE, CATCH BASIN GRATE, AND INVERT ELEVATIONS.



DAMMON

ENGINEERING, INC.

Architects & Engineers

Chief Architect: Kevin J. Kinchen, NCARB
 Chief Engineer: Brian Mischen, PE
 554 Old Spanish Trail
 Slidell, LA 70688
 PH: 985.649.5832
 F: 985.641.5990

#	DESCRIPTION	DATE

SEAL: _____

PRO MULTISITE LACOMBE CHAPEL

PA VORETESCH ROAD AND LA HWY 434
 LACOMBE, LOUISIANA 70448
 JOB No: 2250 DATE: SEPTEMBER 3, 2015
 DRAWN BY: JTL CHECKED BY: CKD

SHEET TITLE: SITE PLAN & PAVING

DRAWING NUMBER: **C101**

SHEET No: 3 of 14