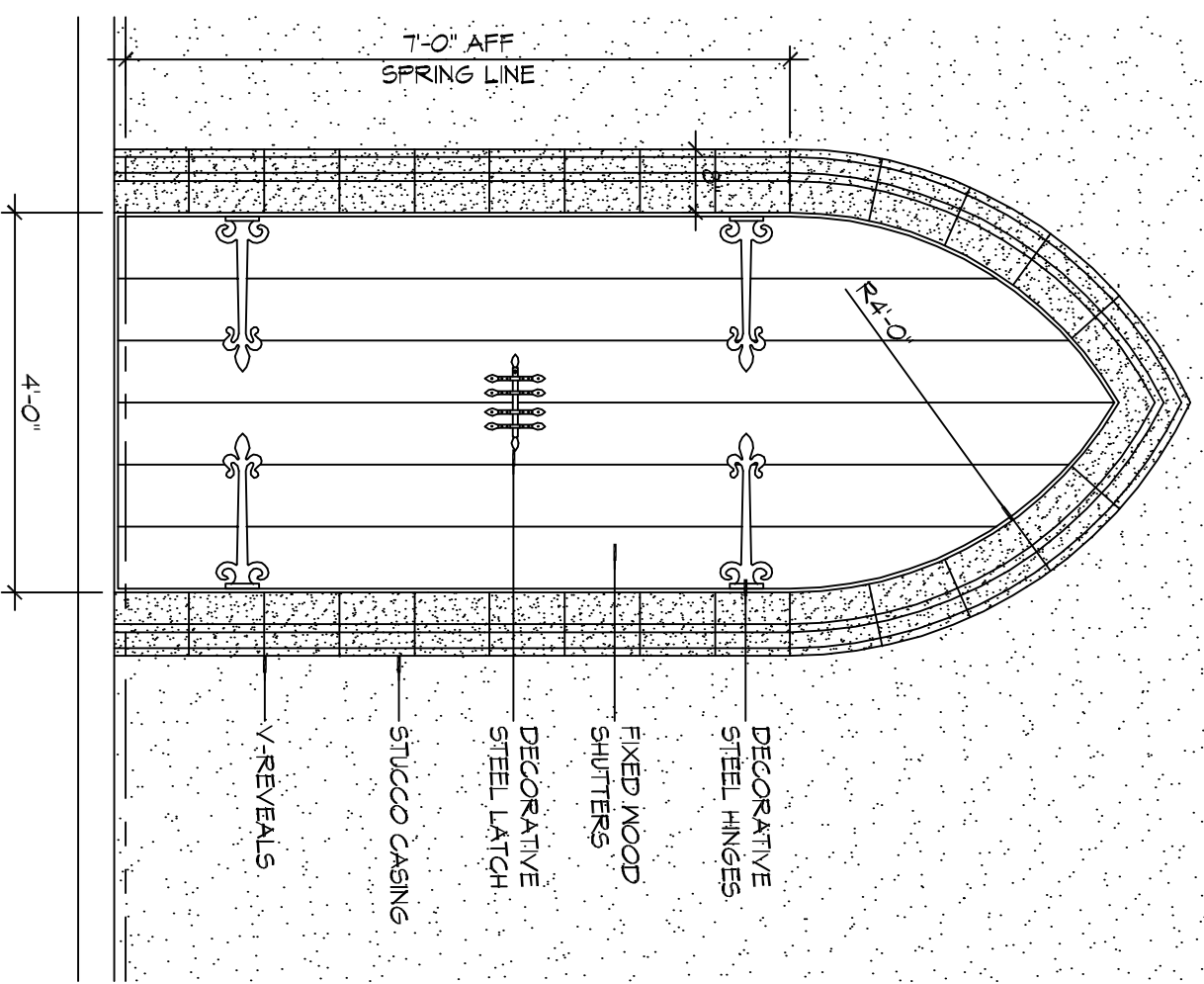
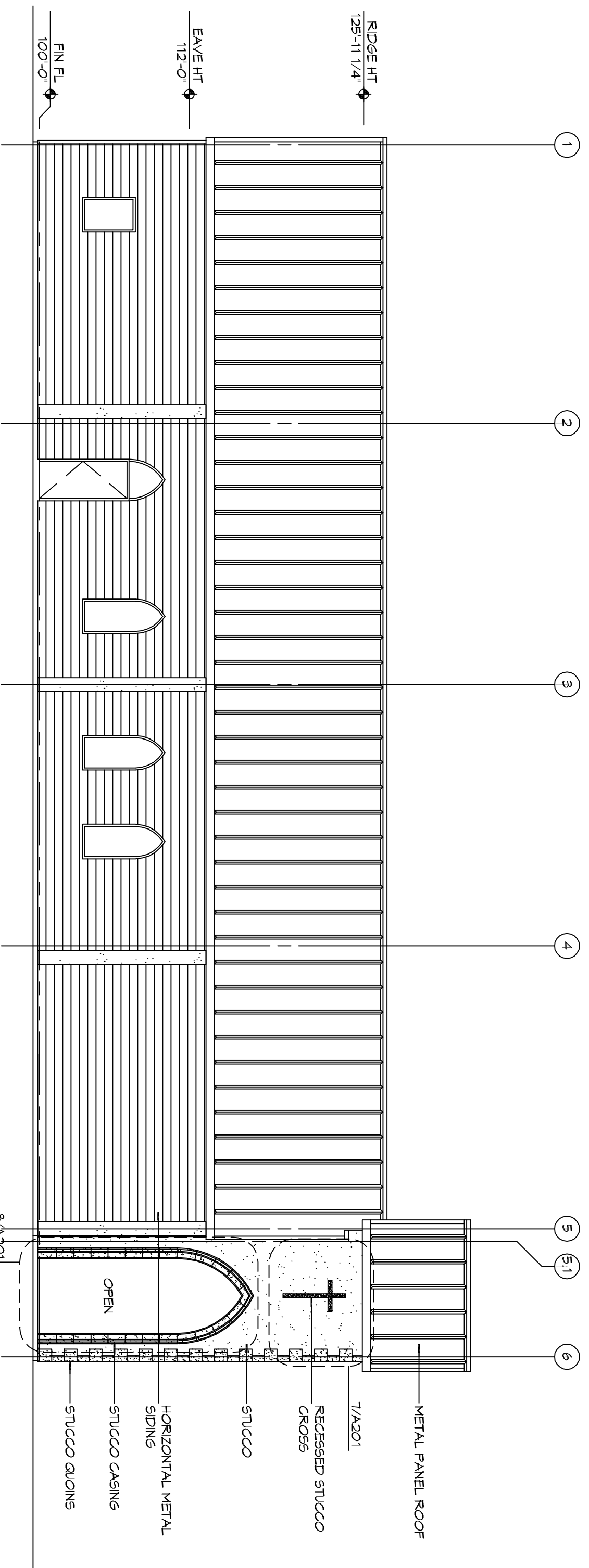


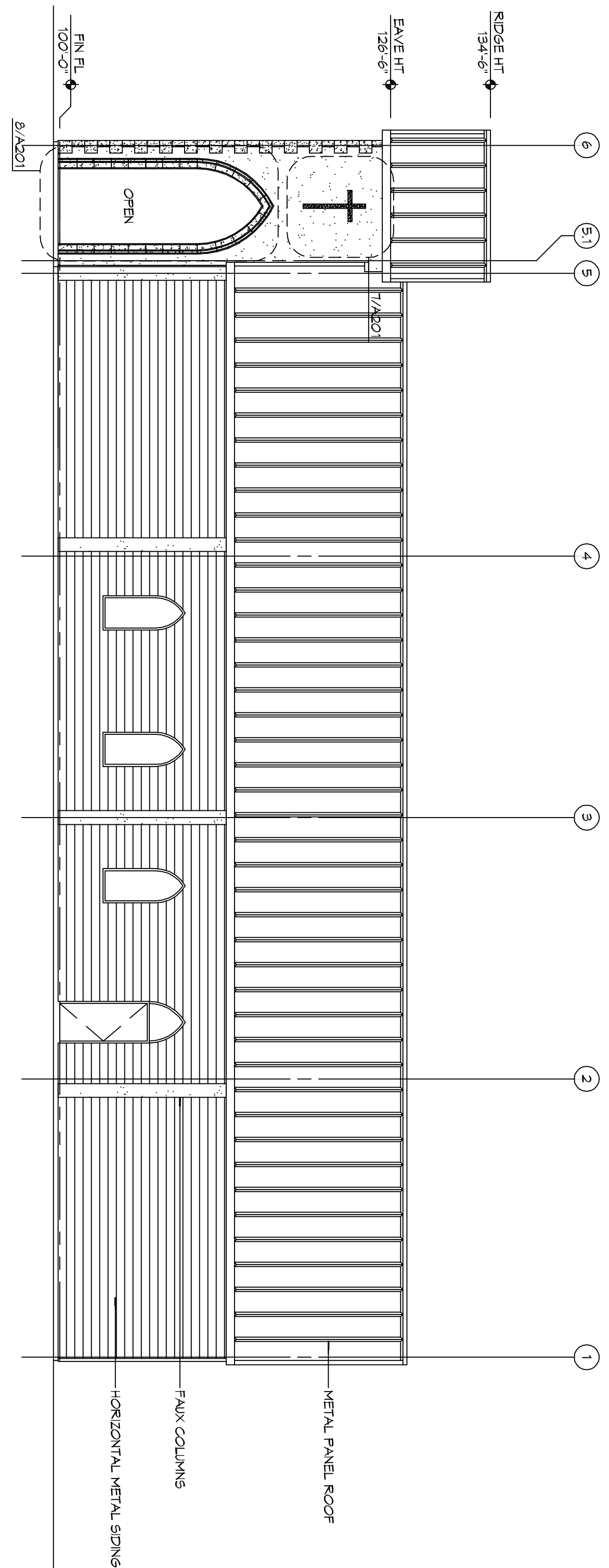
SELEY DETAIL
SCALE: 1/2" = 1'-0"
LARGE CROSS



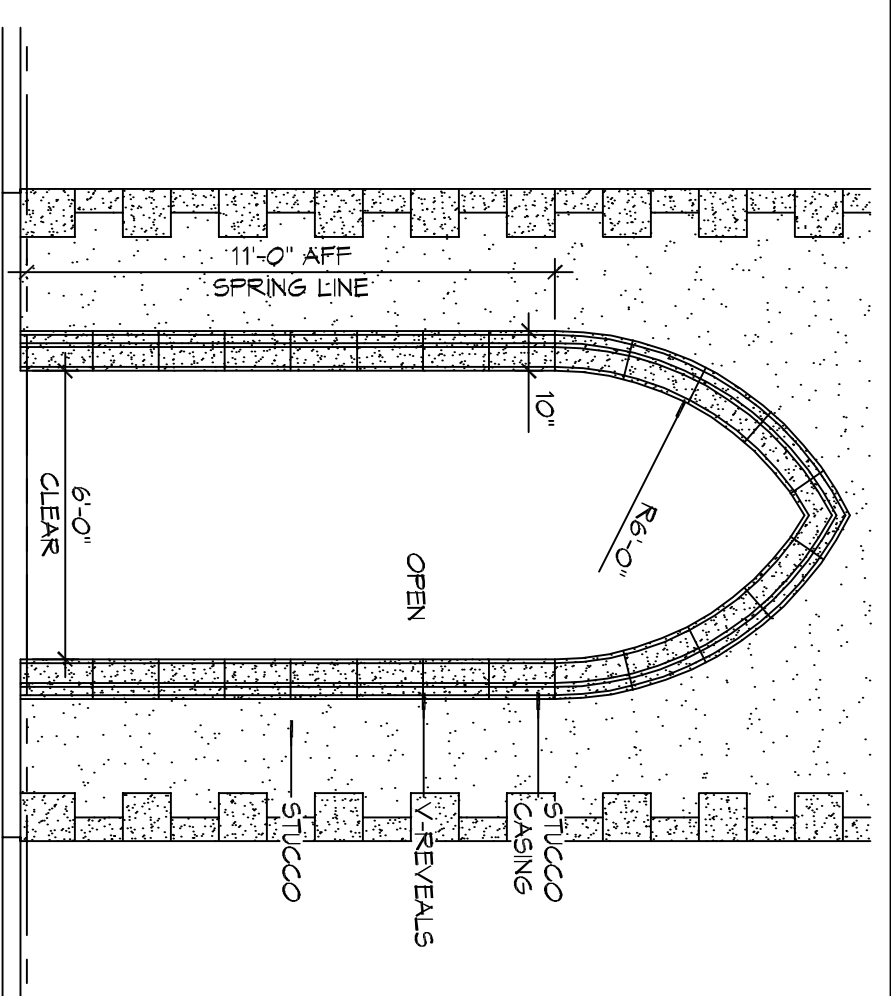
SELEY DETAIL
SCALE: 1/2" = 1'-0"
TYPICAL FAUX SHUTTER



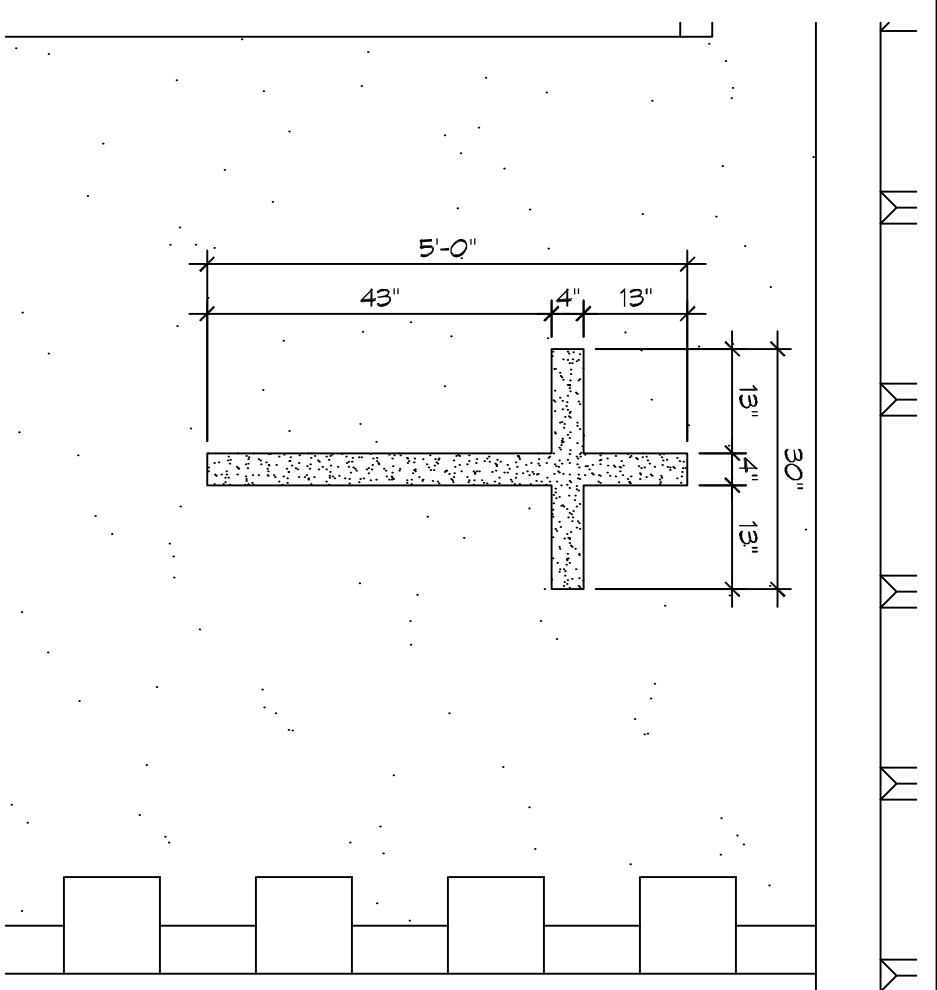
SEXTERIOR ELEVATION
SCALE: 1/8" = 1'-0"
SOUTH



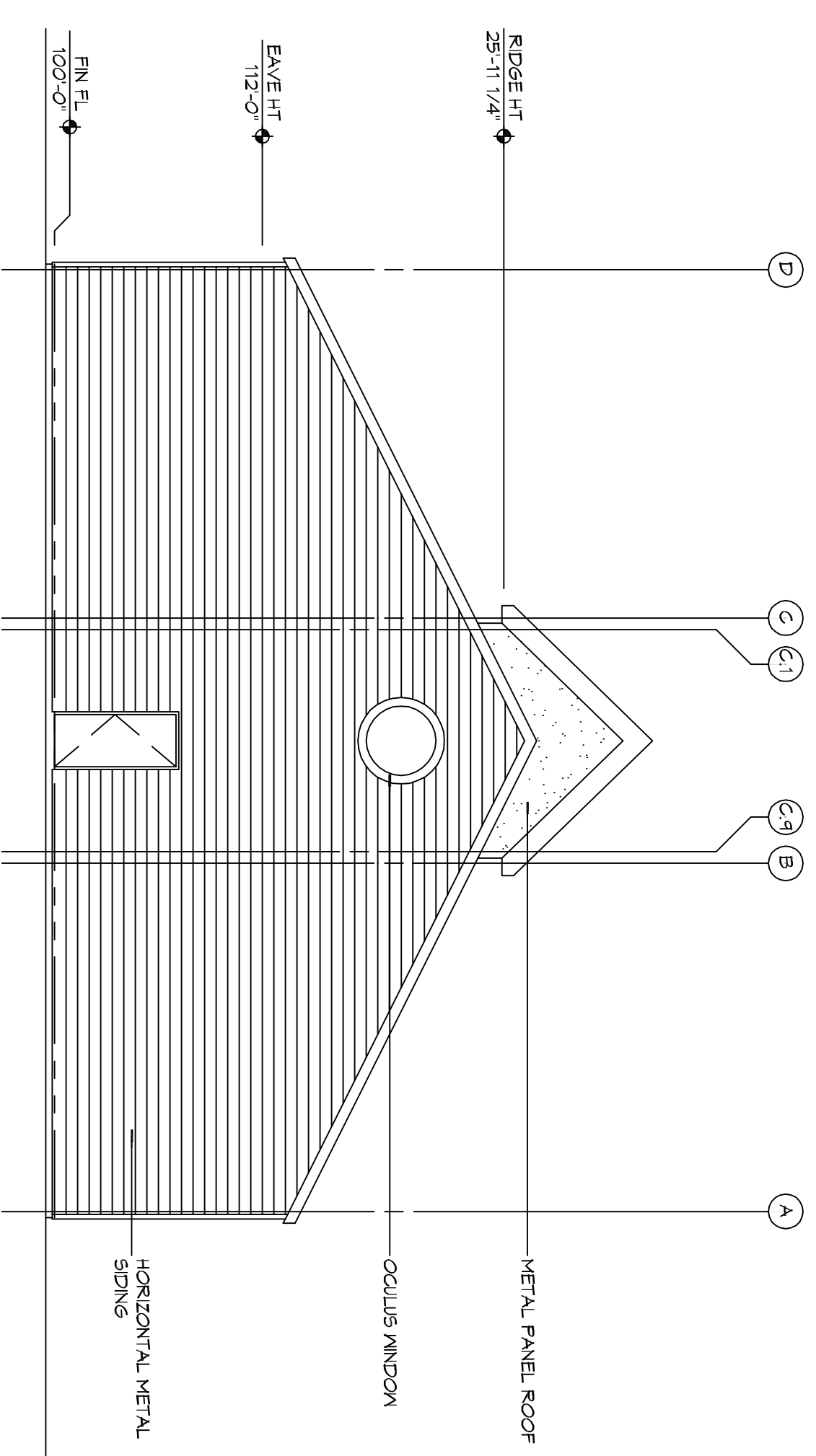
SEXTERIOR ELEVATION
SCALE: 1/8" = 1'-0"
NORTH



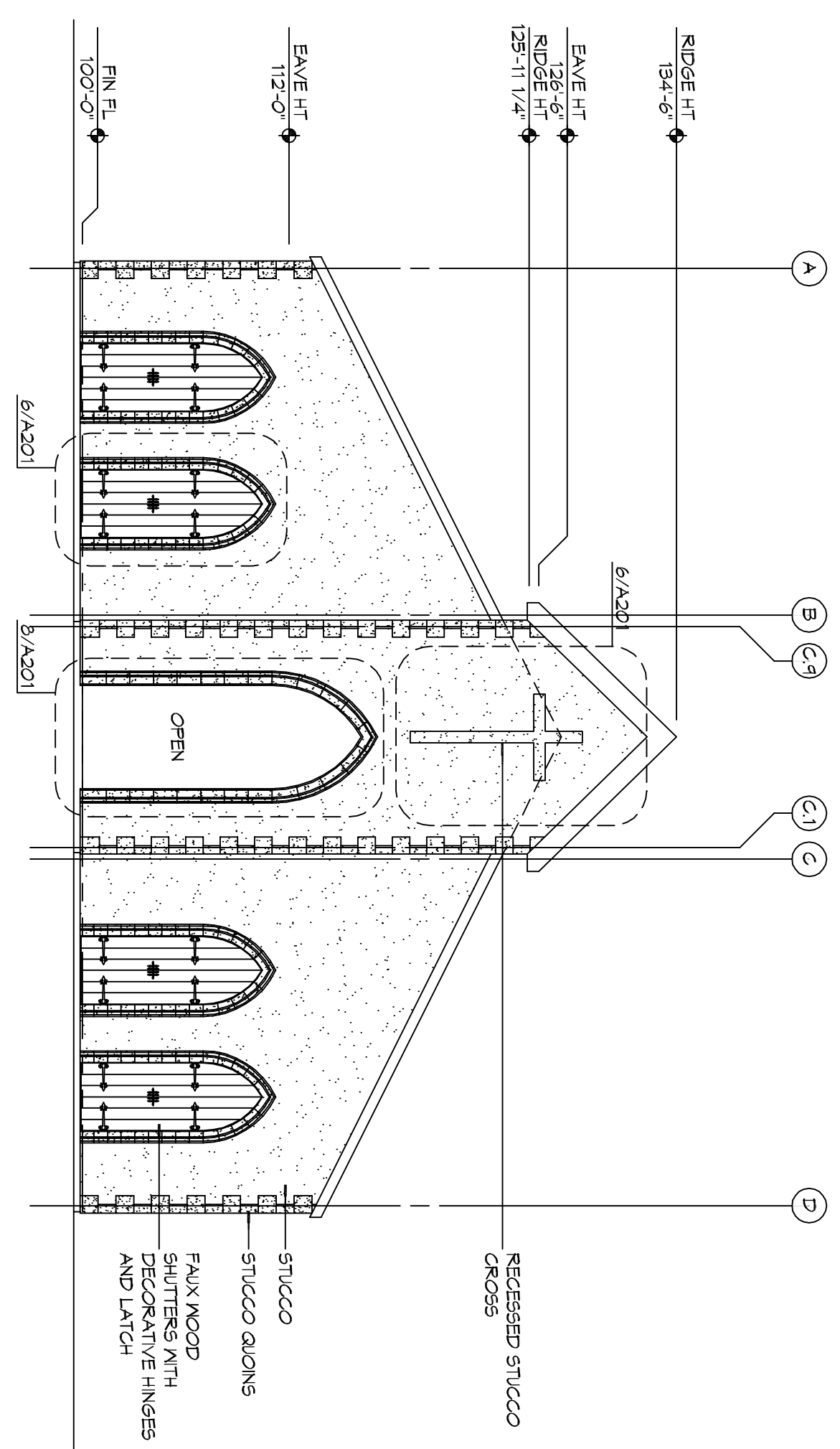
SELEY DETAIL
SCALE: 1/4" = 1'-0"
ENTRY ARCH



SELEY DETAIL
SCALE: 1/2" = 1'-0"
SMALL CROSS



SEXTERIOR ELEVATION
SCALE: 1/8" = 1'-0"
WEST



SEXTERIOR ELEVATION
SCALE: 1/8" = 1'-0"
EAST

REVISIONS		DATE
#	DESCRIPTION	

DAMMON ENGINEERING, INC.
Architects & Engineers

Chief Architect: Kevin J. Kinchen, NCARB
Chief Engineer: Brian Mistic, PE
554 Old Spanish Trail
Stidell, LA 70458

www.dammonengineering.com
info@dammonengineering.com
PH: 985.649.5832
F: 985.641.5950

PRO MULTIS LACOMBE CHAPEL

FX VORTISCH ROAD AND LA HWY 434
LACOMBE, LOUISIANA 70448

JOB No: 2250 DATE: SEPTEMBER 3, 2015

DRAWN BY: K.K. CHECKED BY: K.K.

A201

SHEET No: 10 of 14

DRAWING NUMBER:
SHEET TITLE:
EXTERIOR ELEVATIONS