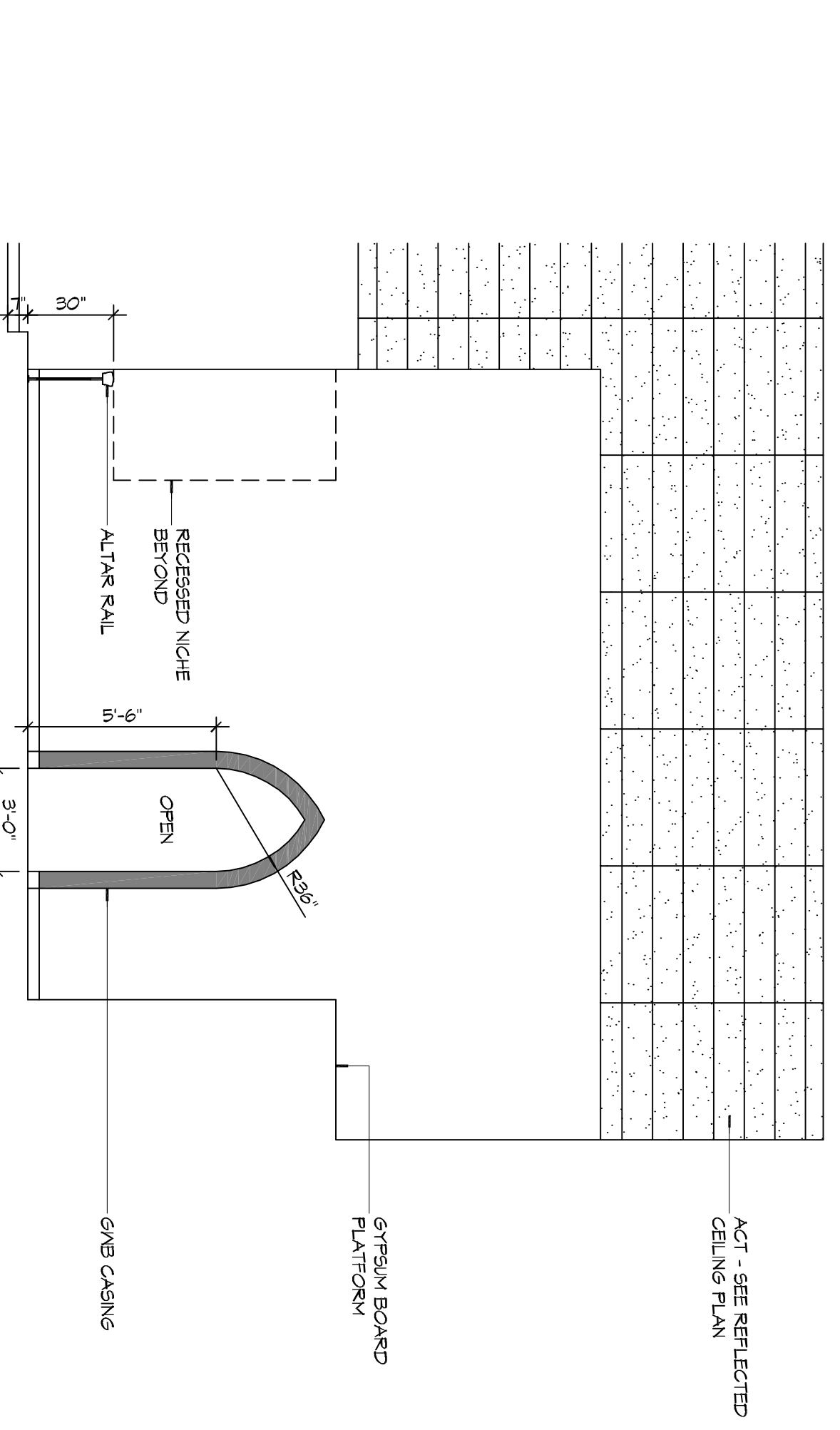
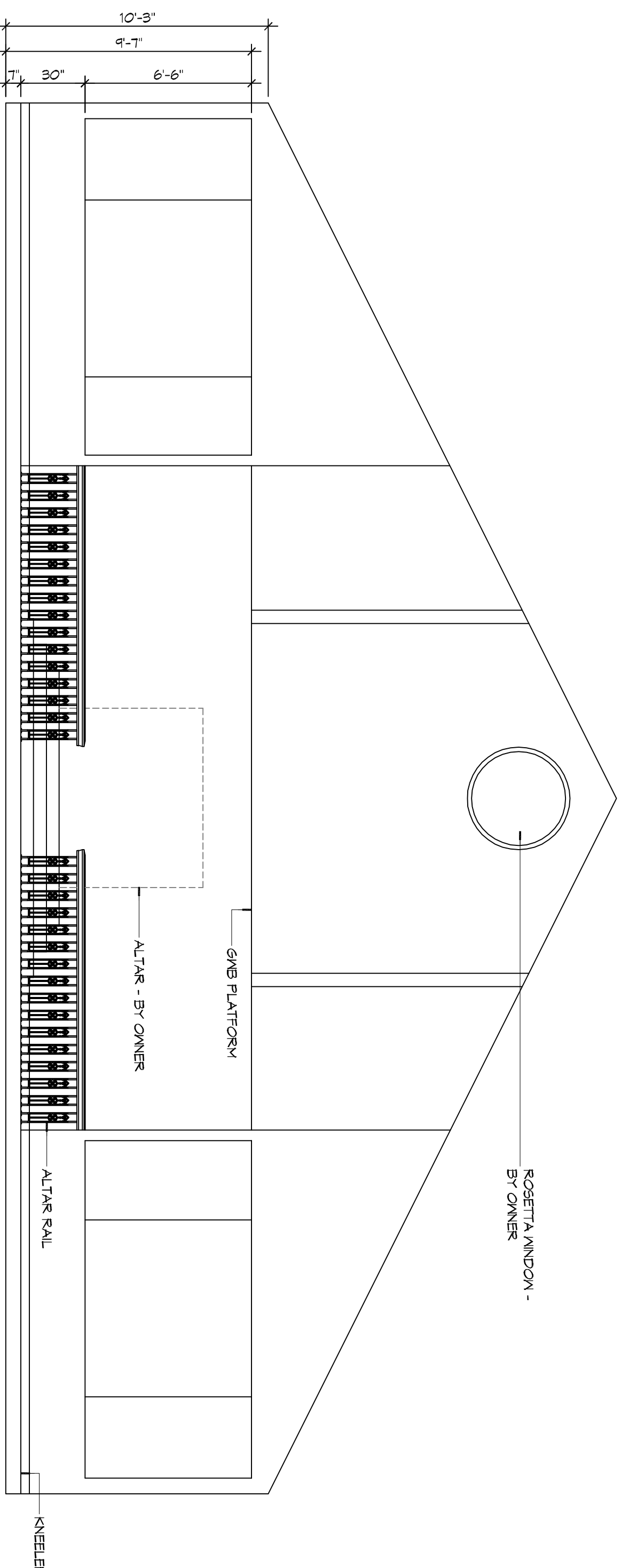


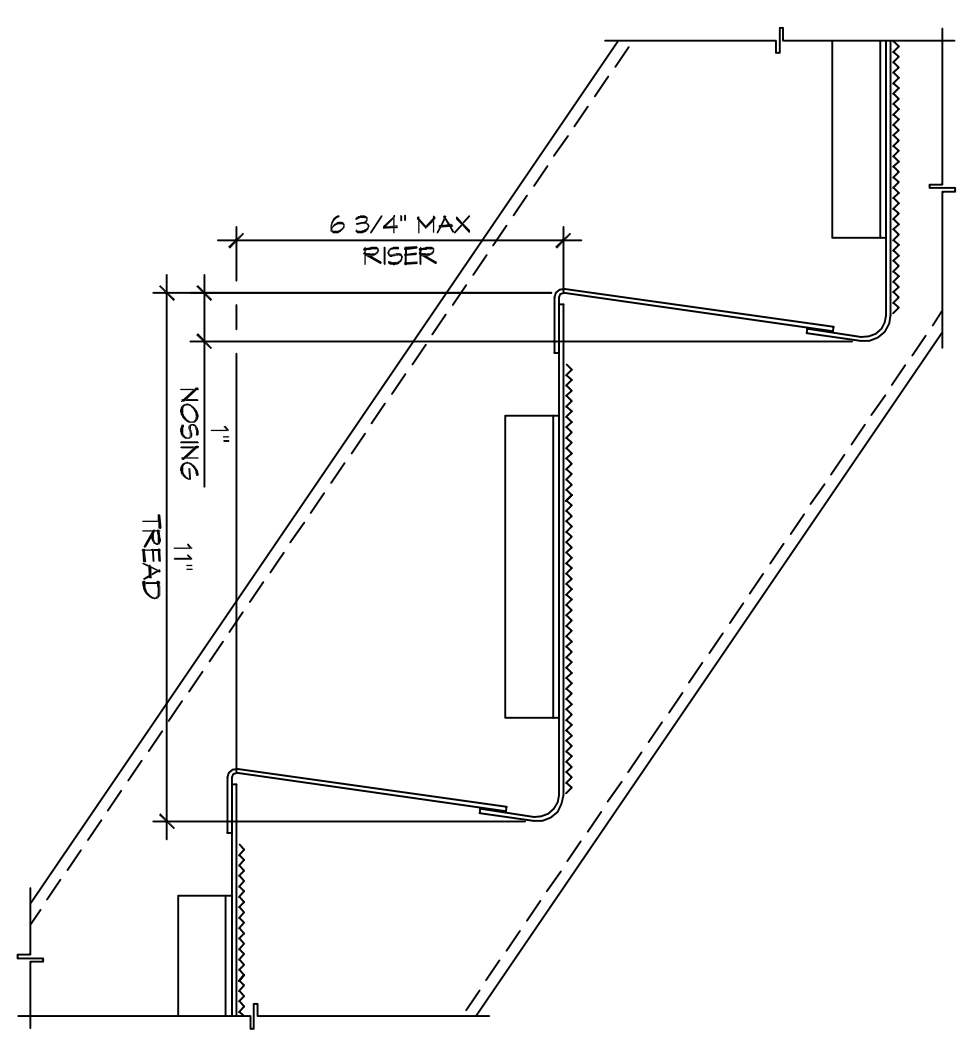
PARTITION TYPES
SCALE: 1/2" = 1'-0"



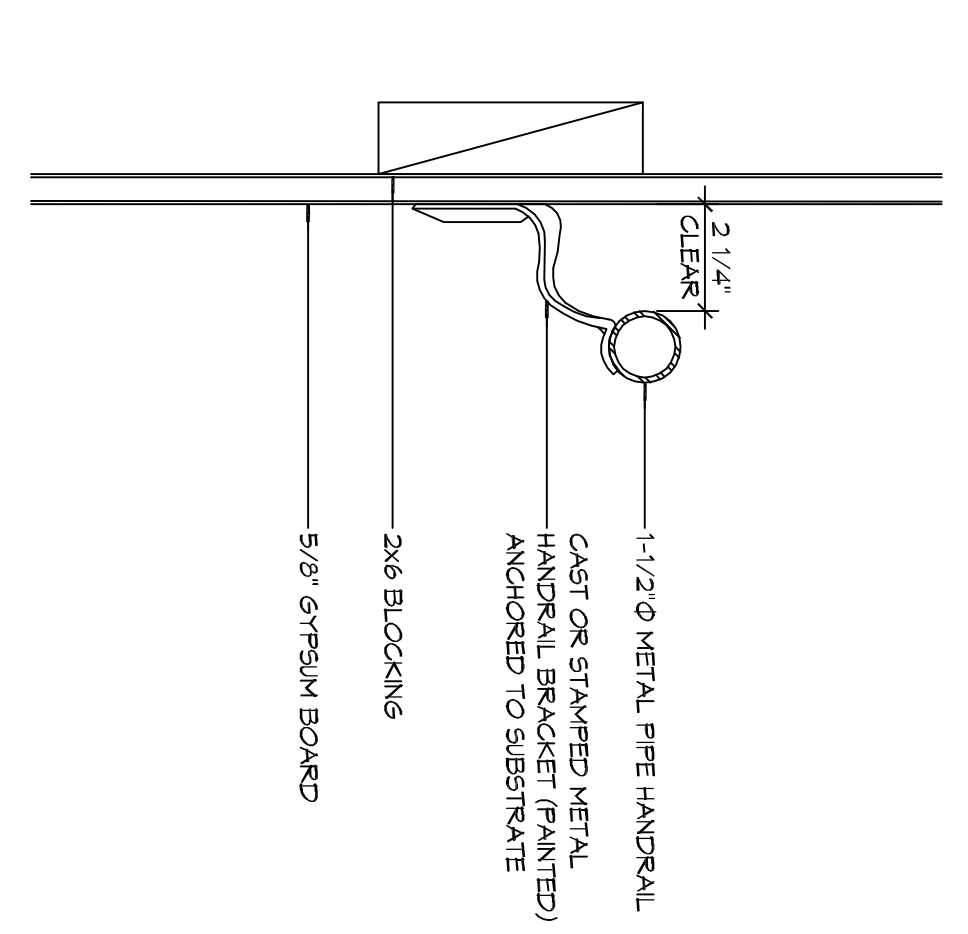
INTERIOR ELEVATION
SCALE: 1/4" = 1'-0"



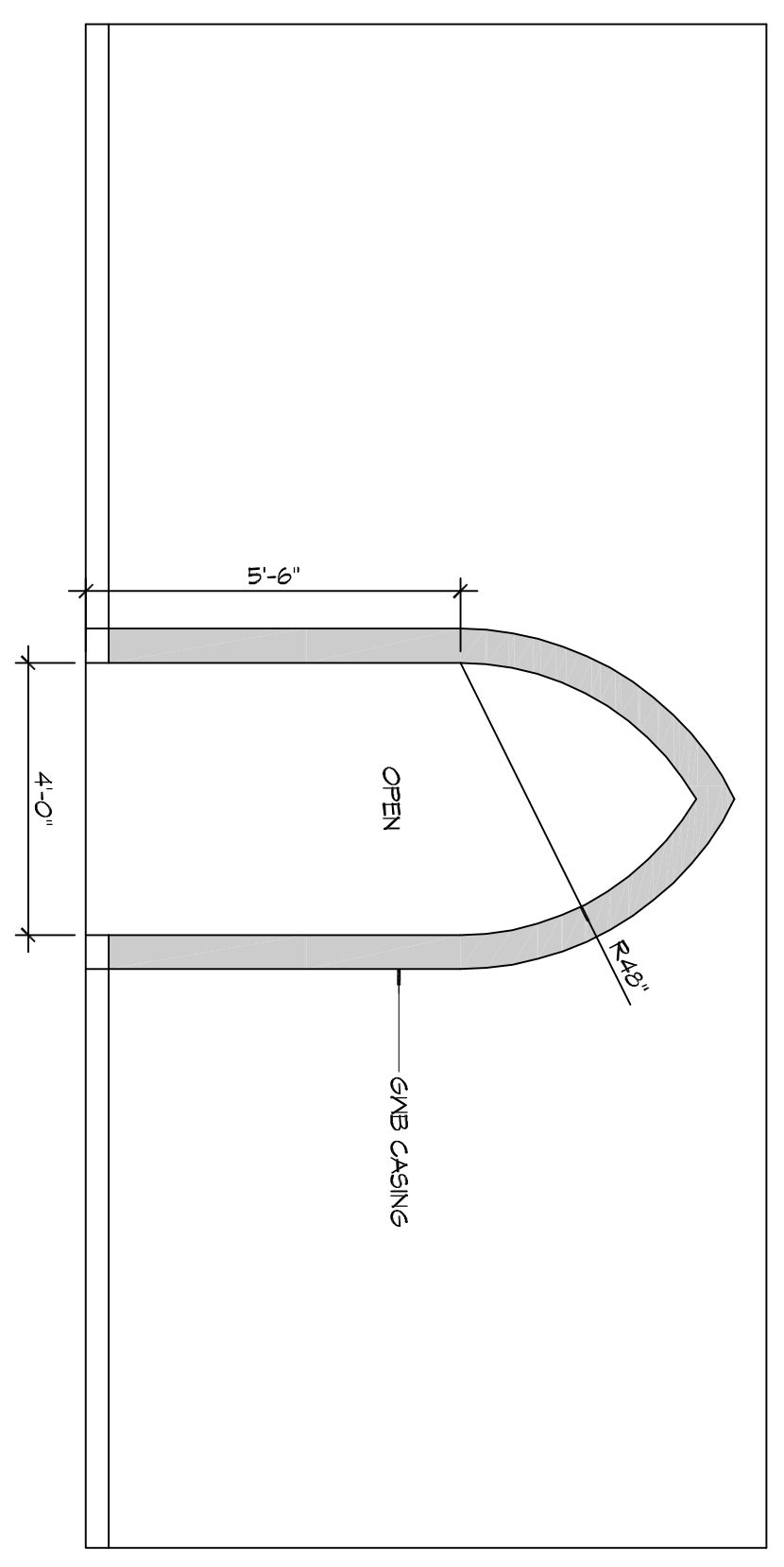
INTERIOR ELEVATION
SCALE: 1/4" = 1'-0"



DETAIL
SCALE: 3/8" = 1'-0"



DETAIL
SCALE: 3/8" = 1'-0"



INTERIOR ELEVATION
SCALE: 3/8" = 1'-0"

GENERAL NOTES

1. THE PARTITION TYPE TAG, ILLUSTRATED ON SHEET 6001, INDICATES THE ASSEMBLY OF THE GENERAL EXTENTS OF EACH PARTITION INDICATED BY THE TAG ON THE FLOOR PLANS.
2. REFER TO STRUCTURAL DRAWINGS FOR EXTENT AND DESCRIPTION OF INTERIOR STRUCTURAL WALLS NOT INDICATED AS SUCH ON FLOOR PLANS.
3. PROVIDE BLOCKING OR BACKER MATERIAL FOR ATTACHMENT MOUNTING FOR WALL HUNG TOILETS OR EQUIPMENT DESCRIBED IN ROOM SCHEDULES.
4. PROVIDE WATER RESISTANT GYPSUM BOARD (WRGB) AT AREAS THAT ARE SCHEDULED TO RECEIVE CERAMIC TILE FINISH.
5. PARTITIONS WITH SOUND ATTENUATING BLANKETS (SAB) ARE IDENTIFIED IN THE PARTITION TYPE DESCRIPTION. EXTEND SAB THE FULL LENGTH AND HEIGHT OF ALL ROOM PERIMETER PARTITIONS TO PROVIDE A COMPLETE ROOM ENCLOSURE.
6. NOTE THAT 3-1/2" FIBERGLASS BATT OR 2" MINERAL WOOL FIBER MAY BE SUBSTITUTED FOR SOUND ATTENUATING BLANKETS.
7. LINE OF STRUCTURE AS SHOWN AT PARTITION TYPE HEAD CONDITIONS IS DIAGNOSTIC ONLY AND DOES NOT INDICATE EXACT CONSTRUCTION BOUNDARY. TO DETERMINE EXACT CONSTRUCTION BOUNDARY, REFER TO THE PARTITION TYPE DESCRIPTION.
8. INDICATED STC RATING IS BASED UPON USE ACoustICAL ASSEMBLIES GUIDELINES.
9. USE MINIMUM 20 GAUGE METAL STUDS OR 7/8" NCH METAL FILING CHANNELS. TYPE AND SPACING IN ACCORDANCE WITH LOCAL BUILDING REQUIREMENTS. TYPICAL STUD SPACING IS 16 INCHES ON CENTER UNLESS NOTED OTHERWISE.
10. ALL INTERIOR PARTITIONS SHALL EXTEND MINIMUM 6 INCHES ABOVE HIGHEST ADJACENT FINISHED CEILING UNLESS NOTED OTHERWISE.

INTERIOR NOTES

1. REFER TO SHEET 6003 FOR TYPICAL MOUNTING HEIGHTS AND FLOOR CLEARANCE REQUIREMENTS WHERE NOT SHOWN ON THIS SHEET.
2. BLOCKING FOR CABINETS IS NOT SHOWN ON THESE DRAWINGS. THE GENERAL CONTRACTOR SHALL BE RESPONSIBLE FOR PROVIDING AND COORDINATING WALL BLOCKING FOR CABINETS. WHERE WOOD BLOCKING IS PROHIBITED BY CODE PROVIDE GALVANIZED SHEET BLOCKING.
3. PROVIDE FULL FINISHED END PANELS ON ALL EXPOSED CASEWORK GUIDELINES.
4. PROVIDE FILLER PANEL WHERE CASEWORK MEETS WALL. SCRIBE AS NECESSARY TO ACHIEVE TIGHT FIT TO FINISH SURFACE.
5. FIELD VERIFY (V/F) ALL DIMENSIONS PRIOR TO SHOP DRAWINGS SUBMITTAL.
6. SINKS SHOWN ON THESE DRAWINGS INDICATE LOCATIONS ONLY AND NOT ACTUAL SIZES. THE CONTRACTOR SHALL BE RESPONSIBLE FOR COORDINATING ACTUAL SIZES AND TYPES WITH CABINET FABRICATOR PRIOR TO FABRICATION.

DAMMON ENGINEERING, INC.
Architects & Engineers

Chief Architect: Kevin J. Kinchen, NCARB
Chief Engineer: Brian Misch, PE
554 Old Spanish Trail
Siddell, LA 70458

www.dammoneengineering.com
info@dammoneengineering.com
PH: 985.649.5832
F: 985.641.5950

REVISIONS		DATE
#	DESCRIPTION	

PRO MULTIS LACOMBE CHAPEL

PK VORTSCH ROAD AND LA HWY 434
LACOMBE, LOUISIANA 70448

JOB No: 2250 DATE: SEPTEMBER 3, 2015

DRAWN BY: ??? CHECKED BY: CKD

This sheet covering the specifications, design and arrangements represented hereby is the property of Dammon Engineering, Inc. and shall remain the property of Dammon Engineering, Inc. and no part thereof shall be copied, reproduced or transmitted in any form or by any means, electronic, mechanical, photocopying, recording, or by any information storage and retrieval system, without the prior written permission of Dammon Engineering, Inc. Where items are prepared and provided to the client, the client shall be responsible for their use and any reproduction or distribution of this document without the prior written permission of Dammon Engineering, Inc. shall be prohibited.

SHEET TITLE:
INTERIOR ELEVATIONS,
PARTITION TYPES, AND
TYPICAL STAIR DETAILS

DRAWING NUMBER:
A401

SHEET No: 11 of 14