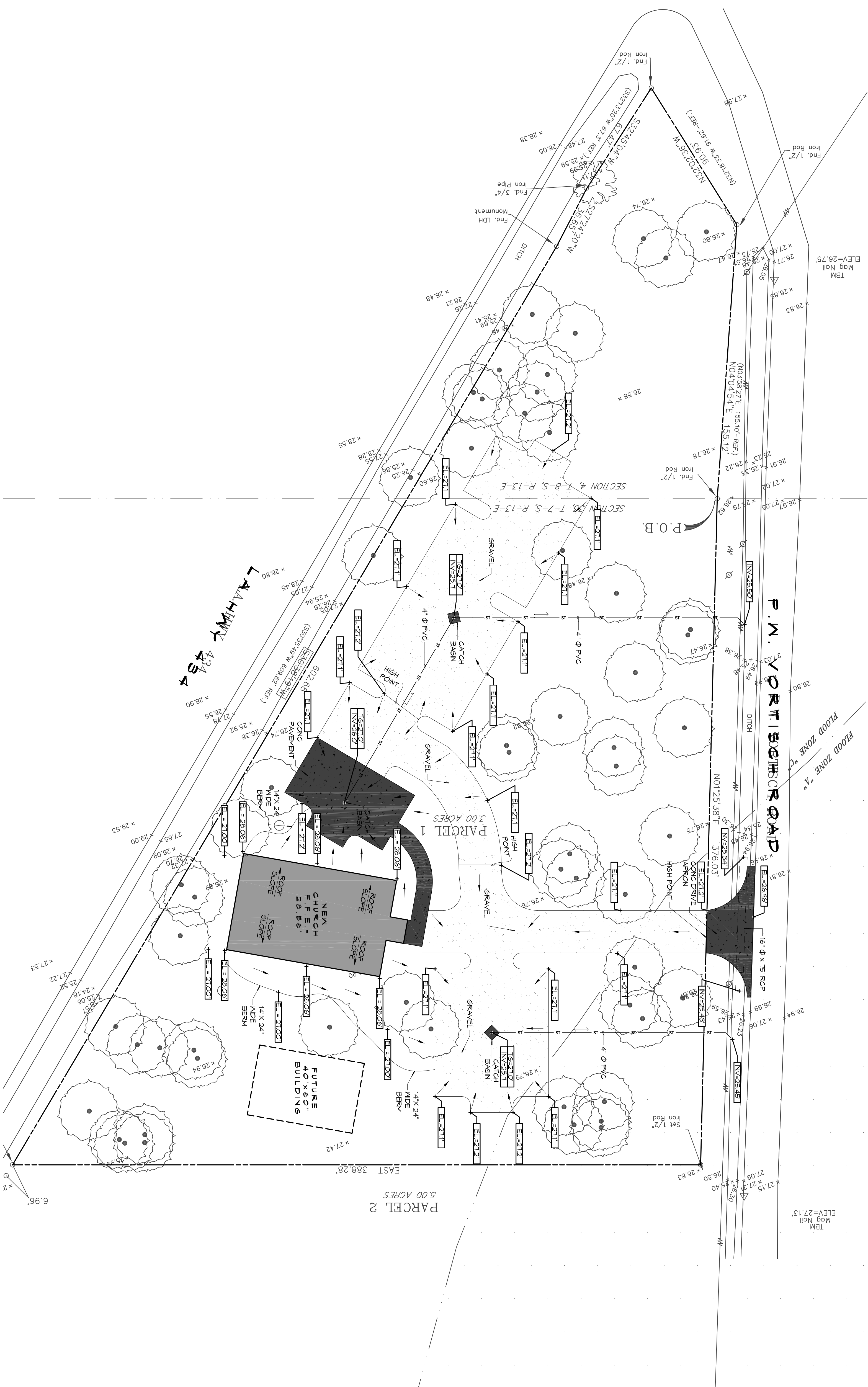
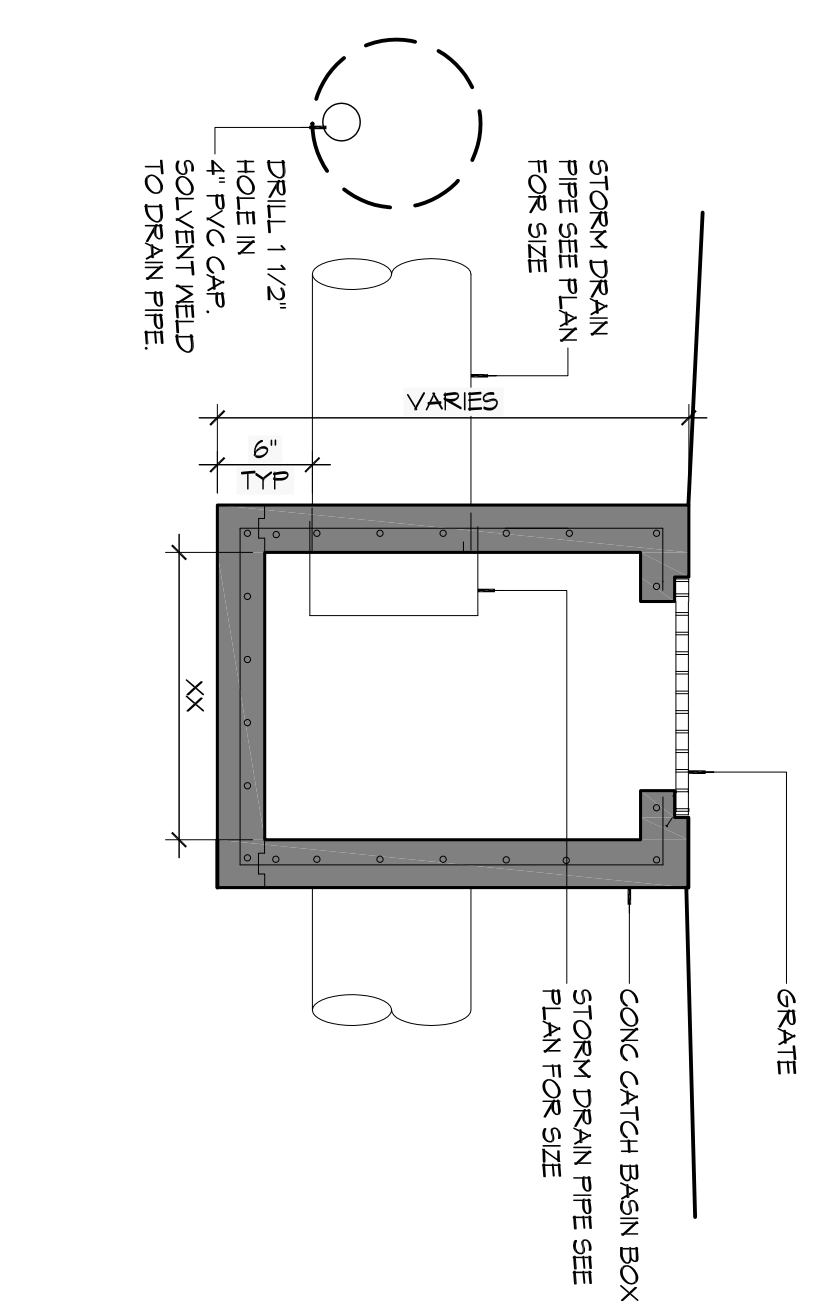


1 SITE PLAN  
SCALE: 1" = 30'



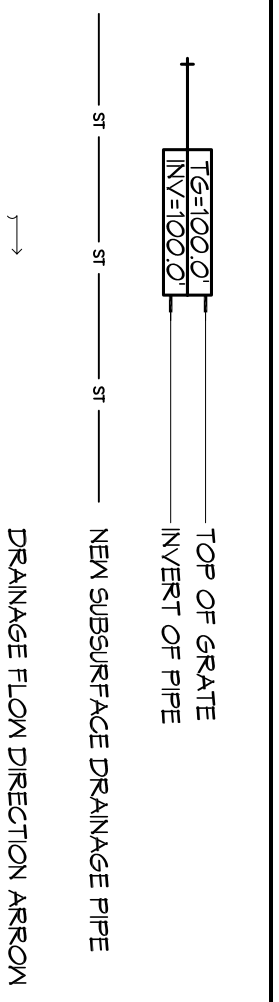
2 DETAIL  
SCALE: NTS  
TYPICAL CATCH BASIN



GENERAL NOTES

1. DRAIN PIPES ALONG AIRPORT MUST BE THE BELL AND SPIGOT TYPE WITH 1/2" RING RUBBER GASKETS. THE BELLS OF THE PIPES SHALL BE LAID UPSTREAM. ALL JOINTS SHALL BE WEATHERED WITH GEOTEXTILE FABRIC. ALL PIPES SHALL REQUIRE A 3' COMPACTED SAND OR LIVERSTONE BASE.
2. REMOVE DIRBS AND CLEAN BOTTOM OF DITCHES DOWN 6" IN DEPTH - AND TYPE ANY BROKEN/CRACKED PIPES OR COLLECTORS WITH SAME SIZE AND TYPE.
3. DRAIN PIPE AND FITTINGS WITHIN PROPERTY LINE SHALL BE POLYVINYL CHLORIDE PLASTIC PIPE, MEETING CLASS 100 C-900 P/C.
4. ELEVATIONS SHOWN ARE M.S.L.
5. FIELD VERIFY ALL ELEVATIONS AND AND DRAINAGE SYSTEM PLACEMENT FROM TO S/ART OF WORK.
6. PROVIDE VERTICAL ELBOW AT CONNECTIONS FROM CONNECTION TO EXISTING DRAINAGE SYSTEM. ALL CONNECTIONS SHALL BE MADE SUCH THAT THE DOWNPOINT CAN BE INSERTED INTO THE PIPE OPENING.

SITE DRAINAGE LEGEND



STORM WATER RUN-OFF CALCULATIONS

REVISIONS	#	DESCRIPTION	DATE

PRO MULTIS LACOMBE CHAPEL

PM VORTSCH ROAD AND LA HWY 434 LACOMBE, LOUISIANA 70448

JOB No: 2250 DATE: AUGUST 6, 2015  
DRAWN BY: KJK CHECKED BY: CKD

SHEET TITLE: SITE PLAN - DRAINAGE

DRAWING NUMBER:

C102

SHEET No. VALUE OF 17

Chief Architect: Kevin J. Kinchen, NCARB  
Chief Engineer: Brian Mistic, PE  
554 Old Spanish Trail  
Stidell, LA 70458

www.dammonengineering.com  
info@dammonengineering.com  
PH: 985.649.5832  
F: 985.641.5950