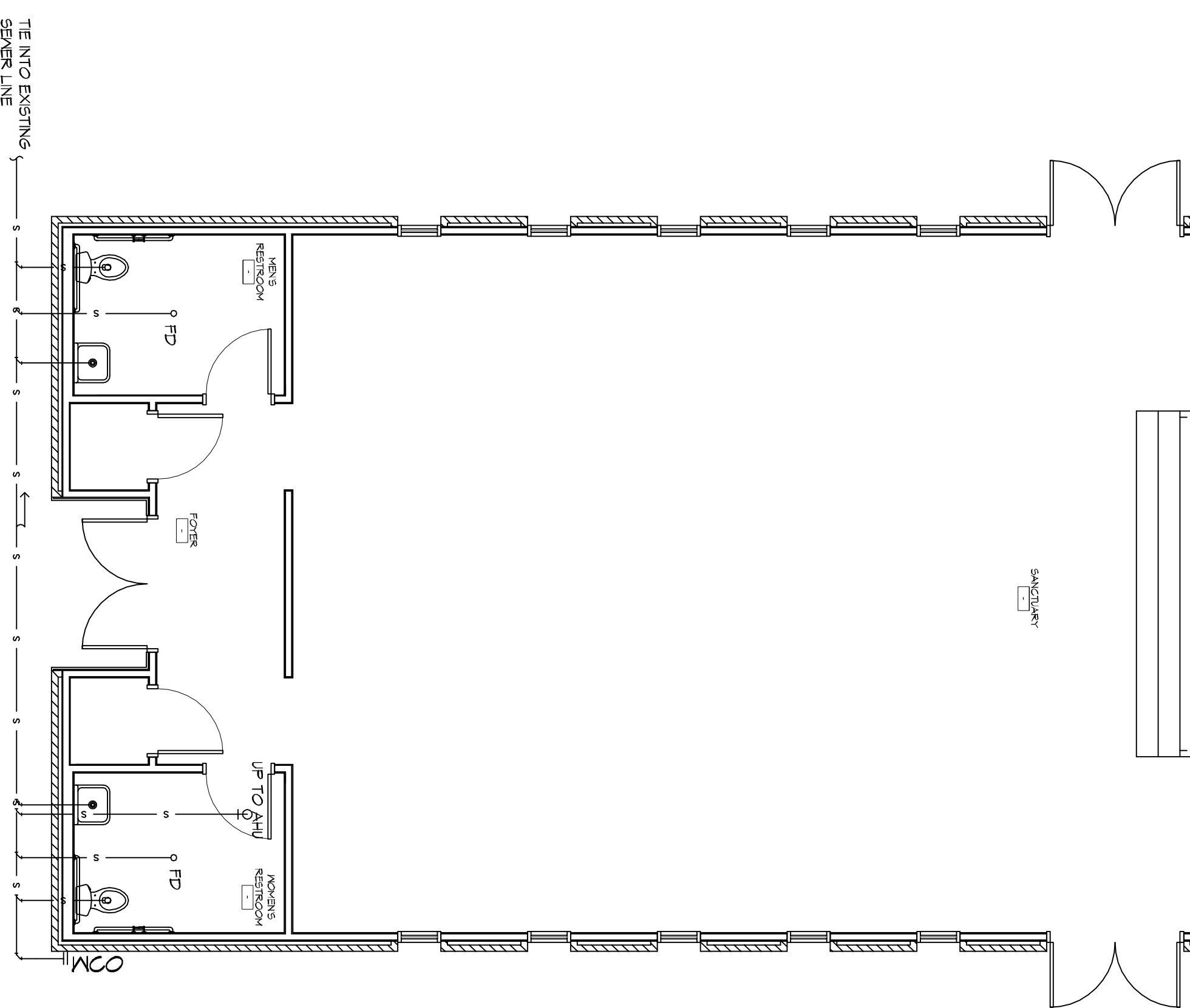
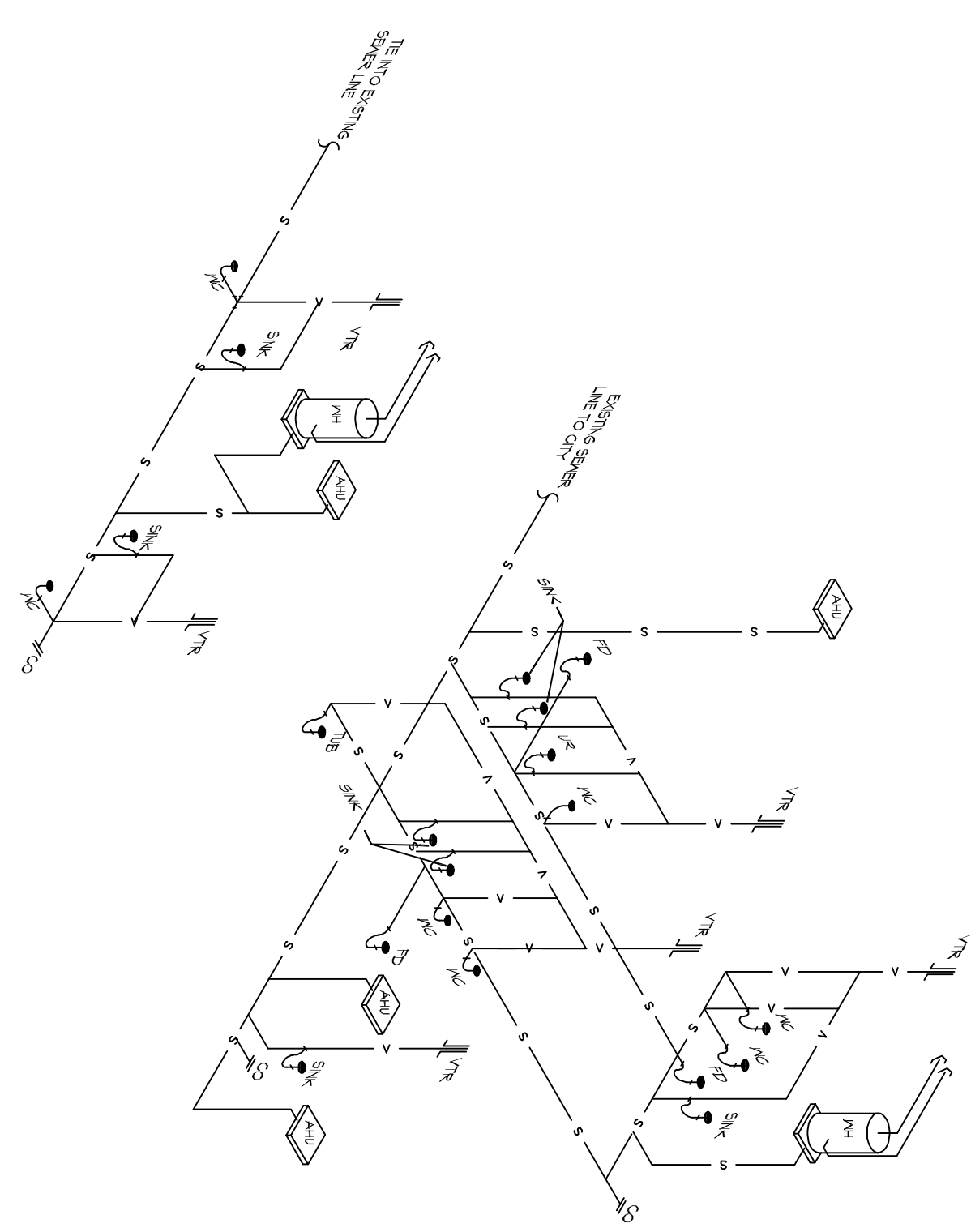


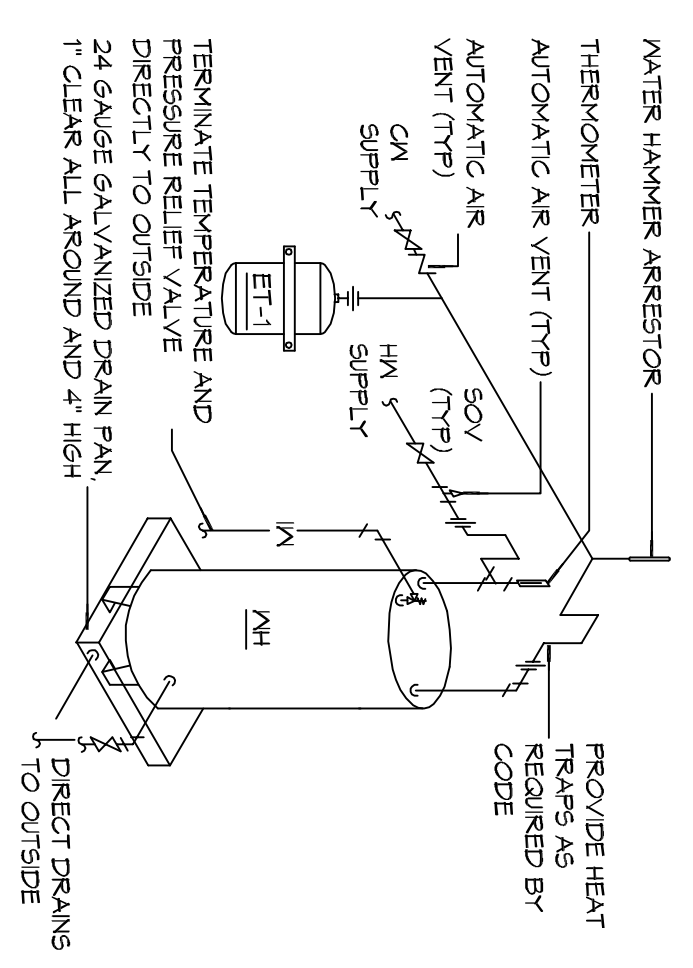
2 LEVEL 2 PLUMBING PLAN
SCALE: 3/16"=1'-0"



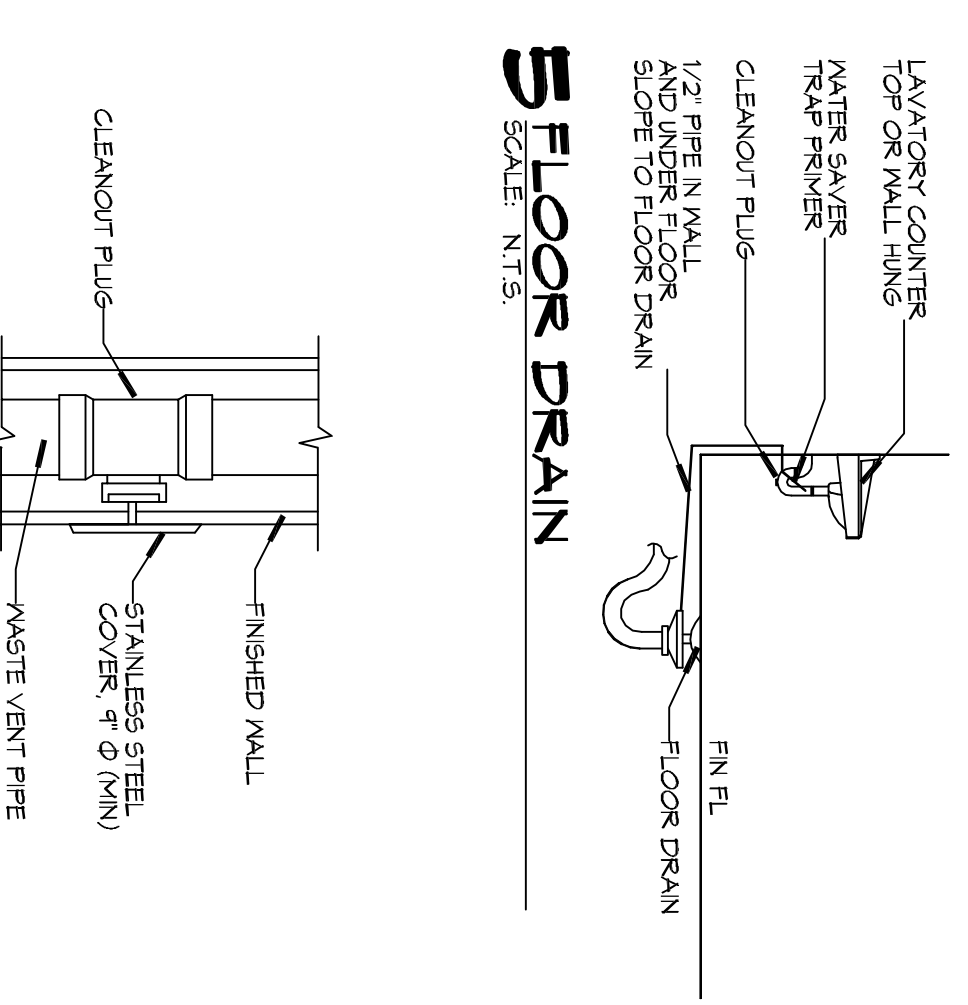
1 LEVEL 1 PLUMBING PLAN
SCALE: 3/16"=1'-0"



3 PLUMBING SANITARY RISER DIAGRAM
SCALE: N.T.S.



4 WATER HEATER
SCALE: N.T.S.



6 WALL CLEANOUT
SCALE: N.T.S.

GENERAL PLUMBING NOTES - SEWER

1. PLUMBING LINES SHOWN ARE DRAIN DIAGRAMMATIC IN NATURE AND RESPONSIBLE FOR THE PROTECTION OF THE ACTUAL CONDITIONS. RESPONSIBLE FIELD VERIFY LOCATION OF ALL ACTUAL CONDITIONS.
2. PROVIDE ALL LABOR, MATERIAL, TRANSPORTATION, SUPERVISION, CLEANUP, SERVICES, AND EQUIPMENT FOR A COMPLETE OPERATING SYSTEM. THE SYSTEM SHALL INCLUDE HOT AND COLD WATER PIPING, SEWER AND VENT PIPING, INSULATION WATER HEATER HANGERS, VALVES, SUPPORTS WITHOUT ANY RESTRICTIONS TO VOLUME CUT AND PATCH AS REQUIRED TO INSTALL PIPES.
3. ALL WORK AND MATERIAL SHALL CONFORM STRICTLY TO THE LATEST LOCAL, CITY, PARISH, STATE AND NATIONAL GOVERNING CODES.
4. CONTRACTOR IS TO FIELD VERIFY ALL EXISTING UTILITY LOCATIONS, ELEVATIONS AND SIZES PRIOR TO COMMENCING ANY WORK CONNECTIONS. CONTRACTOR SHALL FURNISH NECESSARY FIELD FOR THE UTILITIES CONNECTIONS.
5. CONTRACTOR IS RESPONSIBLE TO VERIFY THE EXISTING INVERTS AND SETTING INVERTS OF SEWERAGE AND DRAINAGE PIPES.
6. SEWERAGE LINES 3-INCH AND SMALLER SHALL BE SLOPED 1/4" PER FOOT AND LINES 4-INCH AND LARGER SHALL BE 1/8" PER FOOT.
7. TEST ALL PIPING AT REQUIRED PRESSURE.
8. ALL PLUMBING SHALL BE CLOSELY COORDINATED WITH STRUCTURAL, MECHANICAL SYSTEMS AND ELECTRICAL SYSTEMS TO AVOID CONFLICT WITH EACH OTHER.
9. DO NOT SCALE DRAWINGS. SEE ARCHITECTURAL DRAWINGS FOR EXACT LOCATIONS OF DOORS, WINDOWS, WALLS, FIXTURES, ETC.
10. ALL WATER MAINS AND PIPING NOT SHOWN FOR CLARITY. ALL LOCATIONS FIELD VERIFIED.
11. DOMESTIC HOT AND COLD WATER PIPING AND FITTINGS UNDER SLAB SHALL BE ASTM B88 COPPER WATER TUBE, TYPE K, SOFT ANNEALED. NO JOINTS SHALL BE ALLOWED UNDER THE SLAB.
12. DOMESTIC WATER PIPING AND FITTINGS ABOVE THE SLAB SHALL BE ASTM B88 COPPER WATER TUBE, TYPE L, HARD DRAWN WITH COPPER PRESSURE TIGHT FITTINGS, ANSI B16.22. THE JOINTS SHALL BE SOLDERED TYPE BRASS ASTM B32, ALLOY BRASS 75% (89-5) SOLDER.
13. SOIL, WASTE, VENT PIPING AND FITTINGS ABOVE THE SLAB SHALL BE PRECAST CONCRETE DUCTILE IRON PIPE AND FITTINGS (DIP) OR ABS FIBERGLASS INSERT PIPE GASKET SEAL AND SCHEDULE 40 OR ABS DWV PIPES AND FITTINGS WHERE PERMITTED BY CODE.
14. ALL WATER PIPING AND FITTINGS ABOVE THE FLOOR SHALL BE INSULATED WITH 1/2" THICK FIBERGLASS INSULATION AND JACKET.
15. ALL ELECTRICAL, MECHANICAL AND PLUMBING ELEMENTS PENETRATING FIRE PARTITIONS SHALL BE FIRE CALKED. (PENETRATIONS CAPABLE OF PREVENTING THE PASSAGE OF FLAMES AND HOT GASES WHEN TESTED IN ACCORDANCE WITH ASTM-E814.)
16. SEE ROOF PLAN FOR PLUMBING ROOF PENETRATIONS, ROUTE VENT PIPES IN ATTIC AS NECESSARY.
17. SEE SHEET C103 FOR CONTINUATION OF UTILITIES FROM POINT APPROXIMATELY FIVE FEET OUTSIDE OF BUILDING PERIMETER.
18. ALL VENTS THROUGH ROOF (VTR) SHALL BE LOCATED A MINIMUM OF 10'-0" FROM ANY MECHANICAL OR NATURAL AIR INTAKE.

LEGEND

SYMBOL	DESCRIPTION
—S—S—	SANITARY SEWER
—PW—PW—	POTABLE/DOMESTIC WATER
—V—V—	VENT PIPE
—W—W—	WASTE WATER
—G—G—	GAS PIPE
—C—C—	CONDENSATE PIPE
—FD—	FLOOR DRAIN
—O—O—	OPEN SIGHT DRAIN
—CO	LINE CLEAN OUT
—WCO	WALL CLEAN OUT

DAMMON ENGINEERING, INC.
LOUISIANA & MISSISSIPPI

Chief Engineer: Brian Mistich, PE
554 Old Spanish Trail
Slidell, LA 70458
www.dammonengineering.com
info@dammonengineering.com
PH: 985.649.5832 F: 985.641.5950



REVISIONS

#	DESCRIPTION	DATE

SCALE: _____

JOB No: 2274 DATE: 05/12/2016

DRAWN BY: KHM CHECKED BY: BAM

1941 SULLIVAN DR.
SLIDELL, LA 70460

SHEET TITLE:
PLUMBING PLAN

DRAWING NUMBER:
P101

19 OF 17