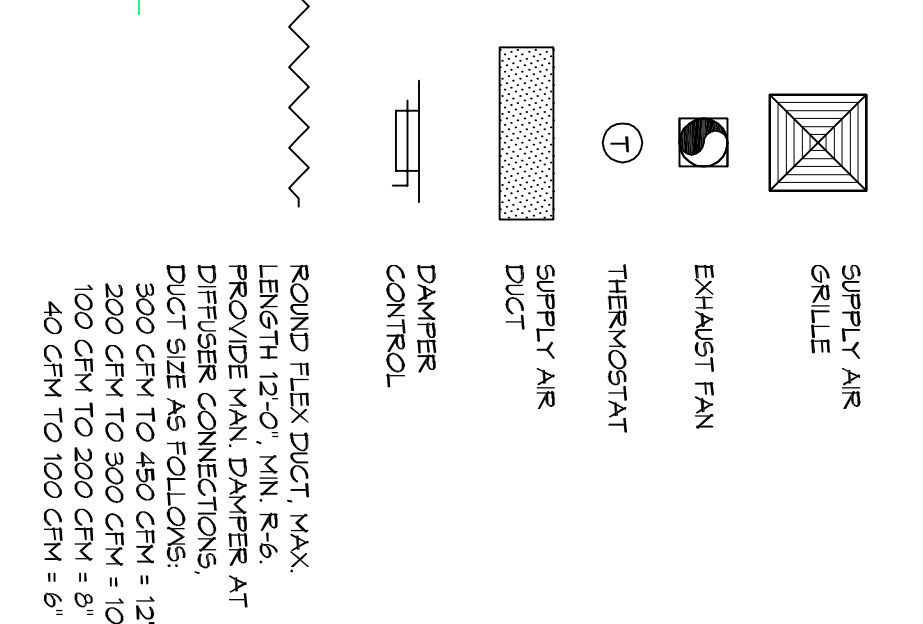


LEGEND



MECHANICAL HVAC NOTES

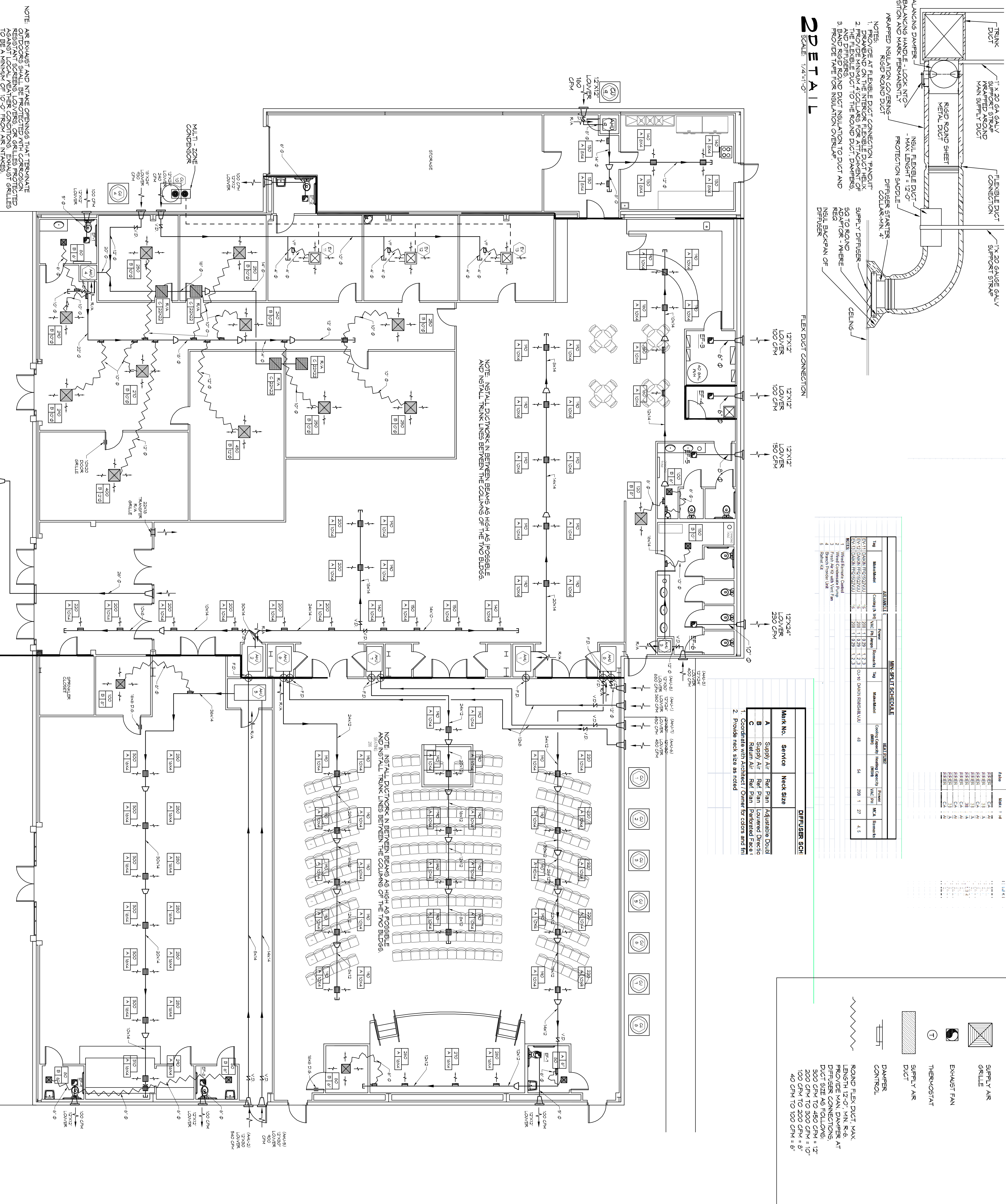
1. CONCEALED DUCTWORK TO BE GALVANIZED SHEET METAL LINED WITH FIBROGLASS GLASS FIBER DUCT LINER, MIN R-6, INSTALLED PER SWACNA STANDARDS.
2. EXPOSED DUCTWORK TO BE GALVANIZED SHEET METAL LINED WITH FIBROGLASS GLASS FIBER DUCT LINER, MIN R-6, INSTALLED PER SWACNA STANDARDS.
3. ROUND FLEXIBLE DUCT TO BE UL-181, CLASS 1, AIR DUCT MATERIALS.
4. DUCT SIZES SHOWN ARE CLEAN INSIDE DIMENSIONS.
5. IN ALL SYSTEMS OVER 2000 CFM AND LESS THAN 15,000 CFM, SMOKE DETECTORS SHALL BE INSTALLED IN ACCORDANCE WITH NFPA 12E IN THE RETURN DUCT DOWNSTREAM OF THE AIR HANDLING UNIT AND ALL FILTERS TO AUTOMATICALLY STOP THE FAN.
6. PROVIDE UL LISTED 125 F° FRESH AIR IN RETURN AIR OF EACH SYSTEM UNDER 2000 CFM TO SHUT DOWN THE FAN IN THE EVENT OF FIRE PENETRATIONS OF FIRE RATED ASSEMBLIES AND WHERE REQUIRED BY CODE, INCLUDING OUTSIDE AIR INTAKES AND EXHAUST FANS.
7. CONDENSATE DRAINS TO BE PVC PIPE RUN TO PLUMBERS P-TAP WITHIN FIVE FEET OF AIR HANDLING UNITS.
8. ALL THERMOSTATS TO BE AUTOMATIC CHANGED OVER WITH HEAT SWITCH.
9. ALL RESTROOM EXHAUST FAN(S) SHALL BE CONTROLLED BY A SWITCH ON THE WALL IN THE SAME LOCATION AS LIGHT SWITCH(S). PROVIDE BACK DRAFT DAMPER.
10. PROVIDE AND INSTALL WATER PROOF GRILLE VENT IN PROPER ROOF LOCATION FOR PLUMBING FIXTURE EXHAUST.
11. ALL SUPPLY AIR VENTS SHALL BE EQUIPPED WITH AIR CONTROL DAMPERS AT THE REGISTER.
12. FRESH AIR SHALL BE SUPPLIED TO EACH AIR HANDLER THROUGH ALL ELECTRICAL, MECHANICAL, AND PLUMBING PENETRATING FIRE WALLS SHALL BE FIRE CALLED, PENETRATIONS THROUGH RAISED FLOOR CONSTRUCTION SHALL BE CHECKED WITH A MANUAL CHAMBER OF PRESSURE TEST WITH ASTME-141.
13. ALL MECHANICAL SYMBOLS ARE DRAWN DIMENSIONALLY ACCORDANCE WITH ASTME-141.
14. CONTRACTORS TO VERIFY WITH OWNER LOCATIONS OF VENTS, DAMPERS, REGISTER, ETC.
15. FLEXIBLE DUCTWORK LENGTH NOT TO EXCEED 15'-0".
16. REFER TO REFLECTED CEILING PLAN FOR FINAL GRILLE AND DIFFUSER LOCATIONS AND COORDINATE AS REQUIRED.
17. FINAL LOCATION OF TEMPERATURE CONTROLS TO BE COORDINATED WITH OWNER AT JOB SITE.
18. PROVIDE AND INSTALL SMOKE DETECTORS AS APPROVED BY LOCAL AUI/S. PLACE NEAR R/A AND S/A OPENINGS OF A/U AND PROVIDE ACCESS PANEL, WIRING BY ELECTRICAL CONTRACTOR, IF REQUIRED.
19. FRESH AIR INTAKES ARE REQUIRED TO HAVE NOT RAINING DAMPERS TO SHUT OFF WHEN SYSTEM IS NOT RUNNING.
20. PROVIDE BIRD SCREENS AT ALL EXTERIOR MECHANICAL PENETRATIONS.
21. CONTRACTOR SHALL PROVIDE A MEANS FOR ATTIC VENTILATION FOR THE MOVEMENT OF AIR ABOVE DROP CEILING(S) EITHER BY MECHANICAL VENTS OR POWER VENTS.

MIN. SPILL SCHEDULE

| Spill | Material | Volume (Gallons) | Frequency | Spill | Material | Volume (Gallons) | Frequency |
|-------|------------------|------------------|-----------|-------|------------------|------------------|-----------|
| 1 | Water | 100 | 1 | 1 | Water | 100 | 1 |
| 2 | Oil | 10 | 1 | 2 | Oil | 10 | 1 |
| 3 | Acid | 5 | 1 | 3 | Acid | 5 | 1 |
| 4 | Alkali | 5 | 1 | 4 | Alkali | 5 | 1 |
| 5 | Flammable Liquid | 5 | 1 | 5 | Flammable Liquid | 5 | 1 |
| 6 | Flammable Solid | 5 | 1 | 6 | Flammable Solid | 5 | 1 |
| 7 | Corrosive Solid | 5 | 1 | 7 | Corrosive Solid | 5 | 1 |
| 8 | Explosive | 5 | 1 | 8 | Explosive | 5 | 1 |
| 9 | Radioactive | 5 | 1 | 9 | Radioactive | 5 | 1 |
| 10 | Other | 5 | 1 | 10 | Other | 5 | 1 |

DIFFUSER SCH

| Mark No. | Service | Neck Size | Adjustable Duct |
|----------|------------|-----------|-----------------|
| A | Supply Air | 14" | Adjustable Duct |
| B | Supply Air | 14" | Adjustable Duct |
| C | Supply Air | 14" | Adjustable Duct |
| D | Supply Air | 14" | Adjustable Duct |
| E | Supply Air | 14" | Adjustable Duct |
| F | Supply Air | 14" | Adjustable Duct |
| G | Supply Air | 14" | Adjustable Duct |
| H | Supply Air | 14" | Adjustable Duct |
| I | Supply Air | 14" | Adjustable Duct |
| J | Supply Air | 14" | Adjustable Duct |
| K | Supply Air | 14" | Adjustable Duct |
| L | Supply Air | 14" | Adjustable Duct |
| M | Supply Air | 14" | Adjustable Duct |
| N | Supply Air | 14" | Adjustable Duct |
| O | Supply Air | 14" | Adjustable Duct |
| P | Supply Air | 14" | Adjustable Duct |
| Q | Supply Air | 14" | Adjustable Duct |
| R | Supply Air | 14" | Adjustable Duct |
| S | Supply Air | 14" | Adjustable Duct |
| T | Supply Air | 14" | Adjustable Duct |
| U | Supply Air | 14" | Adjustable Duct |
| V | Supply Air | 14" | Adjustable Duct |
| W | Supply Air | 14" | Adjustable Duct |
| X | Supply Air | 14" | Adjustable Duct |
| Y | Supply Air | 14" | Adjustable Duct |
| Z | Supply Air | 14" | Adjustable Duct |



DAMMON ENGINEERING, INC.
LOUISIANA & MISSISSIPPI

Chief Engineer: Brian Mistich, PE
554 Old Spanish Trail
Sudell, LA 70458

www.dammonengineering.com
info@dammonengineering.com
PH: 985.649.5832 F: 985.641.5950

MECHANICAL PLAN PHASE 'B'

34492 WILLIS ALLEY
PEARL RIVER LA.

JOB No: 2340 DATE: 02/07/2018
DRAWN BY: JTL CHECKED BY: BAM

REVISIONS

| # | DESCRIPTION | DATE |
|---|-------------|------|
| | | |
| | | |
| | | |

12 of 2