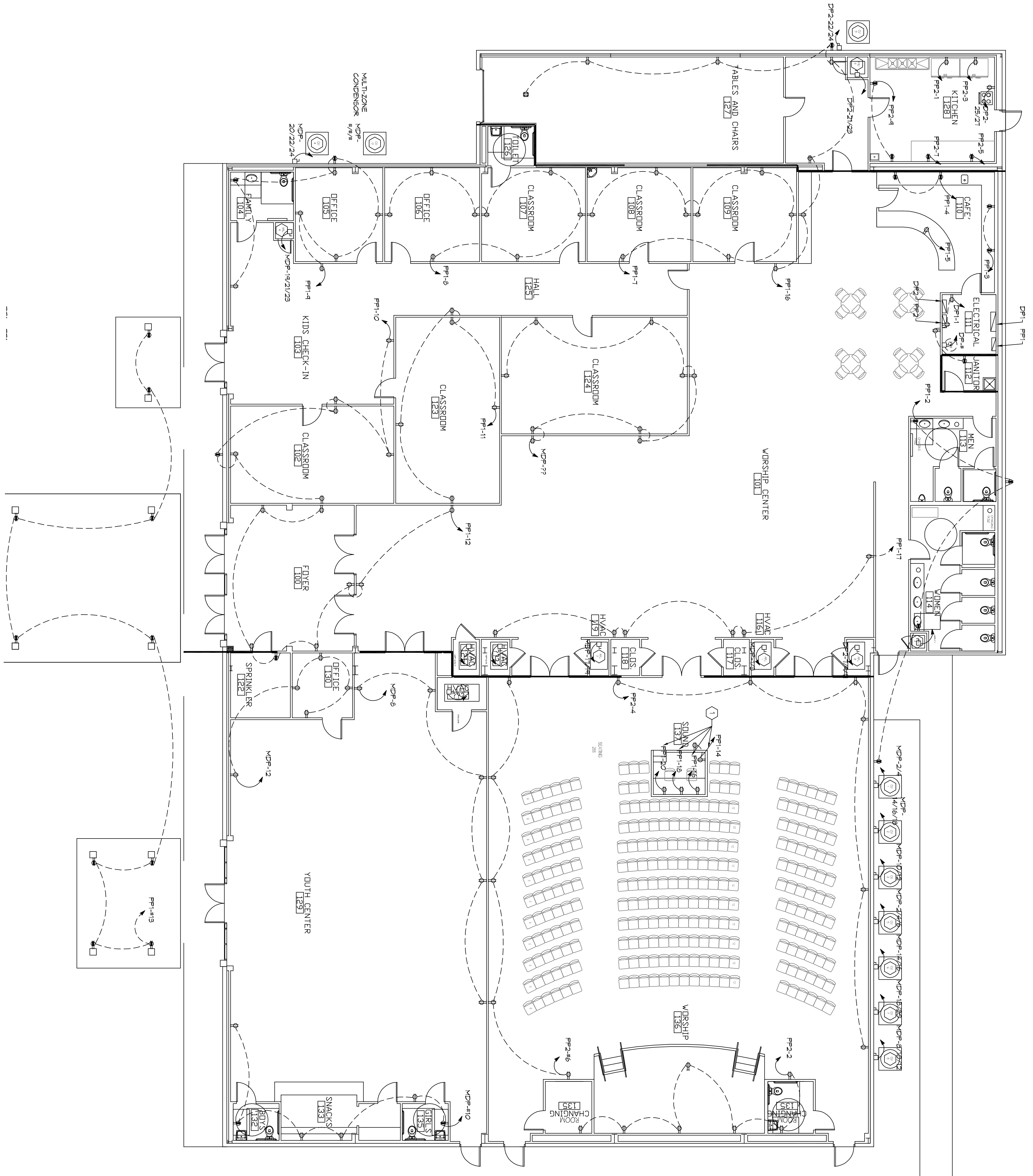


2 POWER PLAN PHASE B
SCALE: 1/8"=1'-0"



GENERAL NOTES

- 1) RELOCATE CIRCUITS FOR SOUND EQUIPMENT.

DAMMON ENGINEERING, INC.
LOUISIANA & MISSISSIPPI

Chief Engineer: Brian Mistich, PE
554 Old Spanish Trail
Suldel, LA 70458
www.dammonengineering.com
info@dammonengineering.com
PH: 985.649.5832 F: 985.641.5950

REVISIONS		DATE
#	DESCRIPTION	

GRACE FELLOWSHIP
34492 WILLIS ALLEY
PEARL RIVER LA.

JOB No: 2340 DATE: 02/07/2018
DRAWN BY: JTL CHECKED BY: BAM

Not shown drawings are specifications, design and measurements representative thereof and are made under the property of Dammon Engineering, Inc. and are hereby deemed to be correct. Dammon Engineering, Inc. is not responsible for any errors or omissions in this drawing. The client is responsible for the accuracy of the information provided. Dammon Engineering, Inc. is not responsible for any errors or omissions in this drawing. The client is responsible for the accuracy of the information provided.

SHEET TITLE:
POWER PLAN PHASE B

DRAWING NUMBER:
E102

SHEET No. 3 of 2