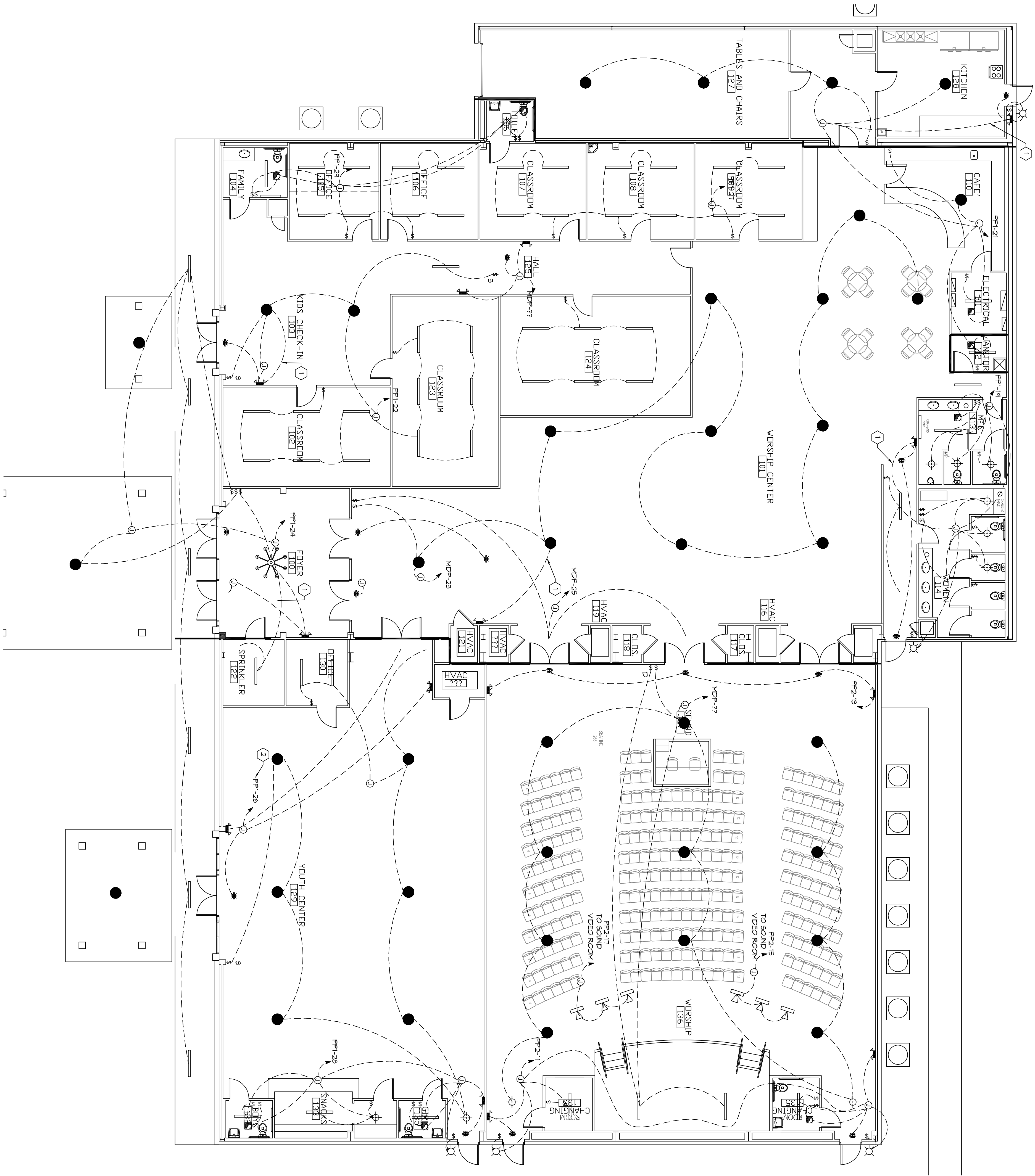


LIGHTING PLAN PHASE B
SCALE: 1/8"=1'-0"



GENERAL LIGHTING NOTES

1. ALL WORK SHALL COMPLY WITH APPLICABLE NATIONAL, STATE AND LOCAL CODES, RULES, REGULATIONS, AND REQUIREMENTS OF THE SERVICE UTILITY COMPANY.
2. REFER TO ARCHITECTURAL DRAWINGS FOR EXACT LOCATION AND MOUNTING INSTRUCTIONS FOR ALL LIGHT FIXTURES. NOTIFY THE ARCHITECT AND ENGINEER OF ANY DISCREPANCIES BETWEEN THESE PLANS AND THE ARCHITECTURAL PLANS RELATING TO QUANTITY, TYPE AND LOCATION OF DEVICES AND/OR FIXTURES.
3. WHEN SPECIFIC LIGHT FIXTURE HAS BEEN SPECIFIED IN THE FUTURE SCHEDULE ELECTRICAL SHALL PROVIDE COMPLETE ASSEMBLY, INCLUDING ALL PARTS AND HARDWARE TO INSURE PROPER FUNCTIONING AS POSSIBLE.
4. ALL CONDUCTORS SHALL BE #12 AWG UNLESS NOTED OTHERWISE.
5. ALL 120V RINGS LONGER THAN 60 FEET SHALL BE #10 AWG AND 270V RINGS LONGER THAN 150 FEET SHALL BE #10 AWG UNLESS NOTED OTHERWISE.
6. ALL CONDUCTORS SHALL BE COPPER.
7. WHERE CONDUCTOR SIZES ARE NOTED ON DRAWINGS THAT ARE SIZE SHALL BE LIGHT SWITCHES 40' AFT UNLESS NOTED OTHERWISE ON DRAWINGS.
8. MOUNTED LIGHT FIXTURES SHALL BE MOUNTED TO CEILING UNLESS OTHERWISE NOTED.
9. ALL DIMMER SWITCHES SHALL HAVE A COMMON SEWALLESS FACER-LATE EACH MULTICIRCUIT SWITCH SHALL BE NO MORE THAN SIX (6) SWITCHES LOCALATION. ADDITIONAL MULTIGANGED BOXES SHALL BE STACKED VERTICALLY AND THE WIDTH OF THE MULTIGANGED SHALL BE AS EVEN AS POSSIBLE.
10. EACH DIMMER SWITCH SHALL HAVE A WAITING RATING 25% HIGHER THAN THE TOTAL WATTAGE OF ALL LIGHTS TO BE CONTROLLED BY THE DIMMER. DIMMER SIZES 600, 1000, 1500, AND 2000 WATTS, LITRON SOVA 150W, DIMMER SWITCHES ARE GANGED WITH DIMMERS. THE DIMMER SHALL BE INSTALLED IN THE MAIN ELECTRICAL PANEL AND LOW VOLTAGE DIMMERS SHALL BE LITRON NOVA T-515K.
11. WHERE FLUORESCENT FIXTURES ARE SHOWN TO BE DIMMED THE DIMMER SHALL HAVE DIMMING TYPE BALLASTS WHICH ARE COMPATIBLE WITH THE SPECIFIED DIMMERS.
12. WHERE LED FIXTURES/LAMPS ARE SHOWN TO BE DIMMED THE DIMMER SHALL BE COMPATIBLE WITH THE FIXTURE/LAMP SPECIFIED OR PROVIDED.
13. ALL EMERGENCY LIGHT FIXTURES SHALL HAVE 40 MINUTE BATTERY BACKUP WITH INTEGRAL TEST BUTTON AND SHALL BE MAINTAINED SEPARATELY.
14. ALL FLUORESCENT FIXTURES THAT UTILIZE DOUBLE-ENDED LAMPS AND CONTAIN BALLASTS SHALL BE PROVIDED WITH A DISCONNECTING MEANS IN ACCORDANCE WITH NEC 410.79G.

LEGEND

- 2x4" SUSPENDED FLUORESCENT LIGHT FIXTURE (9 - 32W BULB)
- CEILING MOUNTED FLUORESCENT STRIP FIXTURE (2 - 32W BULB)
- 2x2" SUSPENDED FLUORESCENT LIGHT FIXTURE (12 BULB 51W) LITRONA 2617L 32L A18 LP940
- LED EXTERIOR MOTION ACTIVATED FLOOD LIGHT WITH PHOTO TRIGGER (240W)
- DIRECTIONAL STAGE LIGHT (75W LED)
- EMERGENCY LIGHT FIXTURE (120)
- EMERGENCY LIGHT FIXTURE (120)
- EXT LIGHT FIXTURE - WALL MOUNTED (100W)
- EXT LIGHT FIXTURE - CEILING MOUNTED (100W)
- LED WALL MOUNTED LIGHT FIXTURE WITH 40 MIN. BACK-UP (75W)
- RECESSED CEILING LIGHT FIXTURE (100W)
- WALL MOUNTED VANITY LIGHT FIXTURE (100W)
- CEILING MOUNTED LIGHT FIXTURE (100W)
- CHANDELIER LIGHT FIXTURE
- ELECTRIC PANEL BOARD
- CIRCUIT HOME RUN
- LIGHT SWITCH 120V COMMERCIAL GRADE
- LIGHT SWITCH - 3-WAY 120V COMMERCIAL GRADE
- LIGHT SWITCH - DIMMER 120V COMMERCIAL GRADE
- VENTILATOR FAN ONLY, SEE MECHANICAL SHEET

KEYED NOTES

1. CONNECT EMERGENCY LIGHT CIRCUIT TO UNWITTING HOT OF LIGHTING CIRCUIT.
2. REUSE CIRCUIT INSTALLED IN PHASE I FOR LIGHT IN YOUTH CENTER.

DAMMON ENGINEERING, INC.
LOUISIANA & MISSISSIPPI

Chief Engineer: Brian Mistich, PE
554 Old Spanish Trail
Sudley, LA 70458

www.dammonengineering.com
info@dammonengineering.com
PH: 985.649.5832 F: 985.641.5950

REVISIONS	DATE	DESCRIPTION

GRACE FELLOWSHIP

34492 WILLIS ALLEY
PEARL RIVER LA.

JOB No: 2340 DATE: 02/07/2018

DRAWN BY: JHM CHECKED BY: BAM

14 OF 2

E104

SHEET TITLE:
LIGHTING PLAN
PHASE B

DRAWING NUMBER: