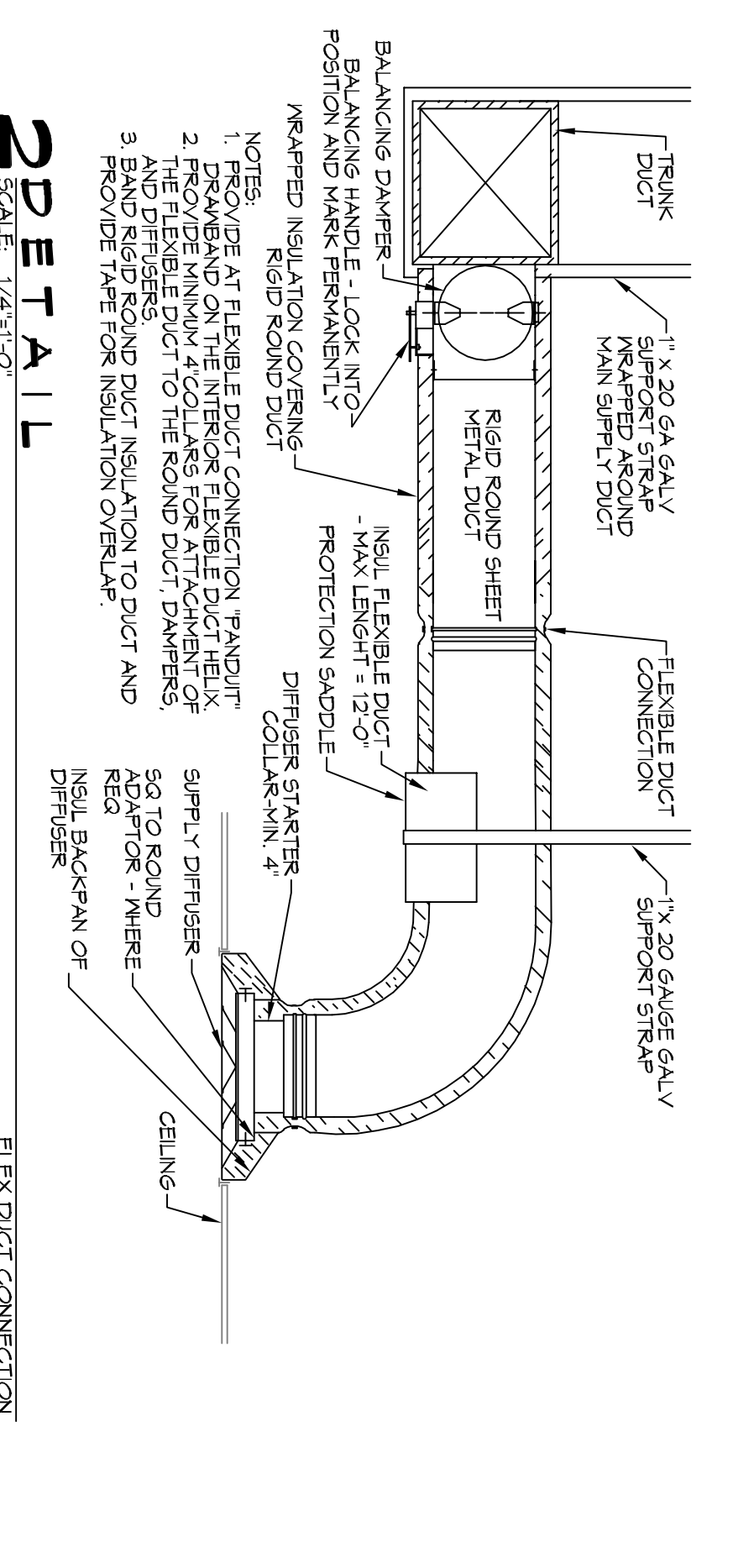
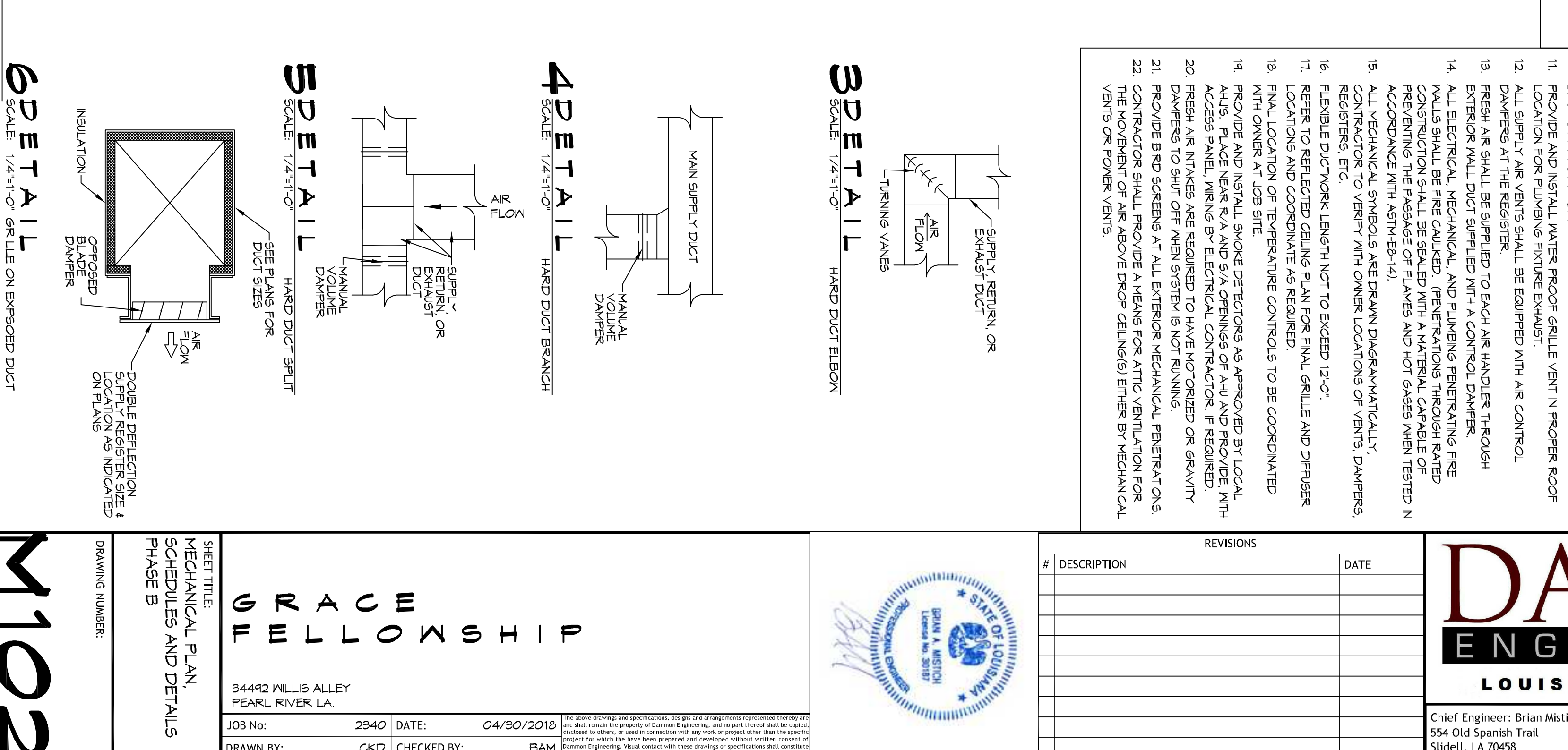
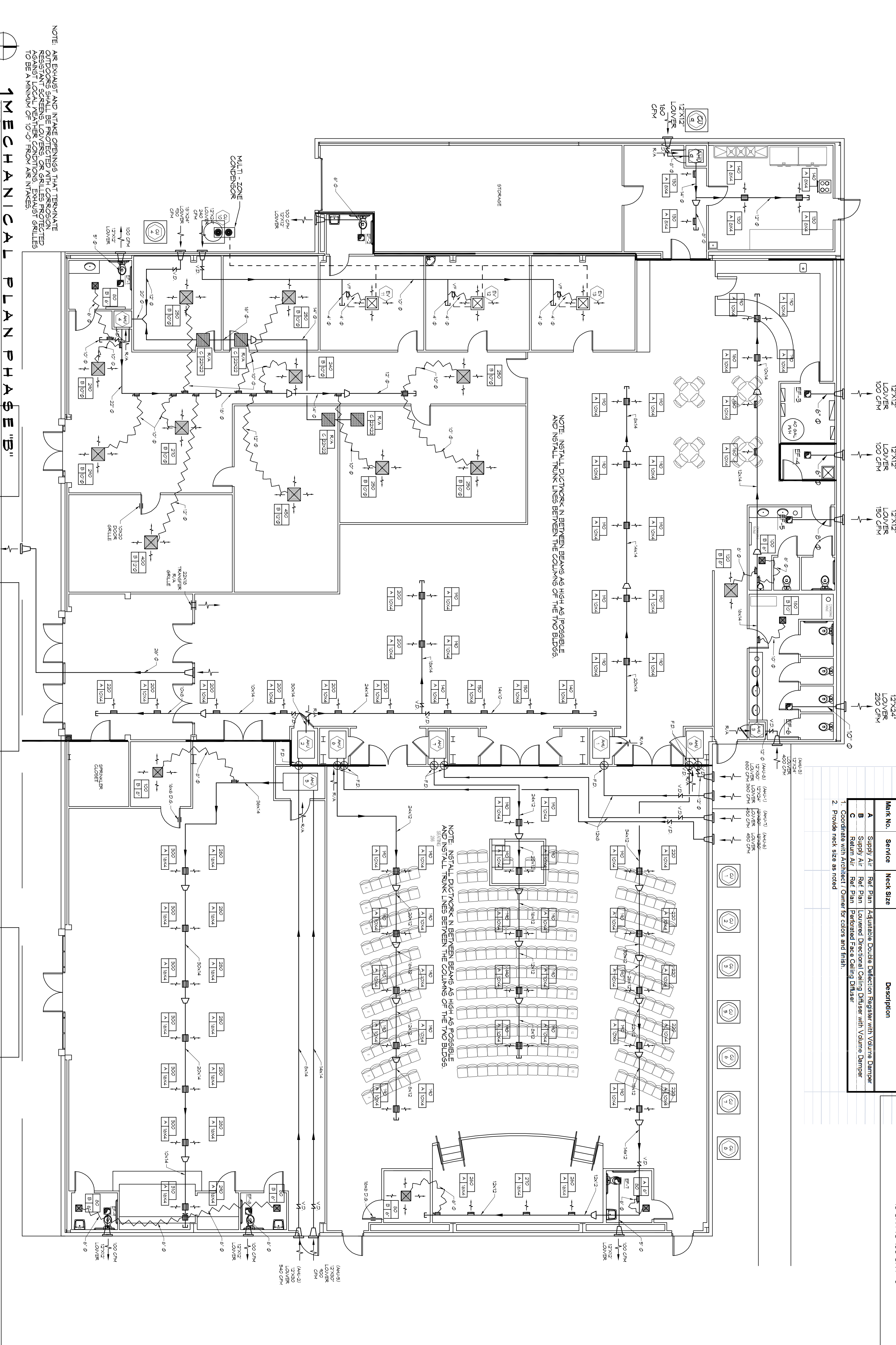
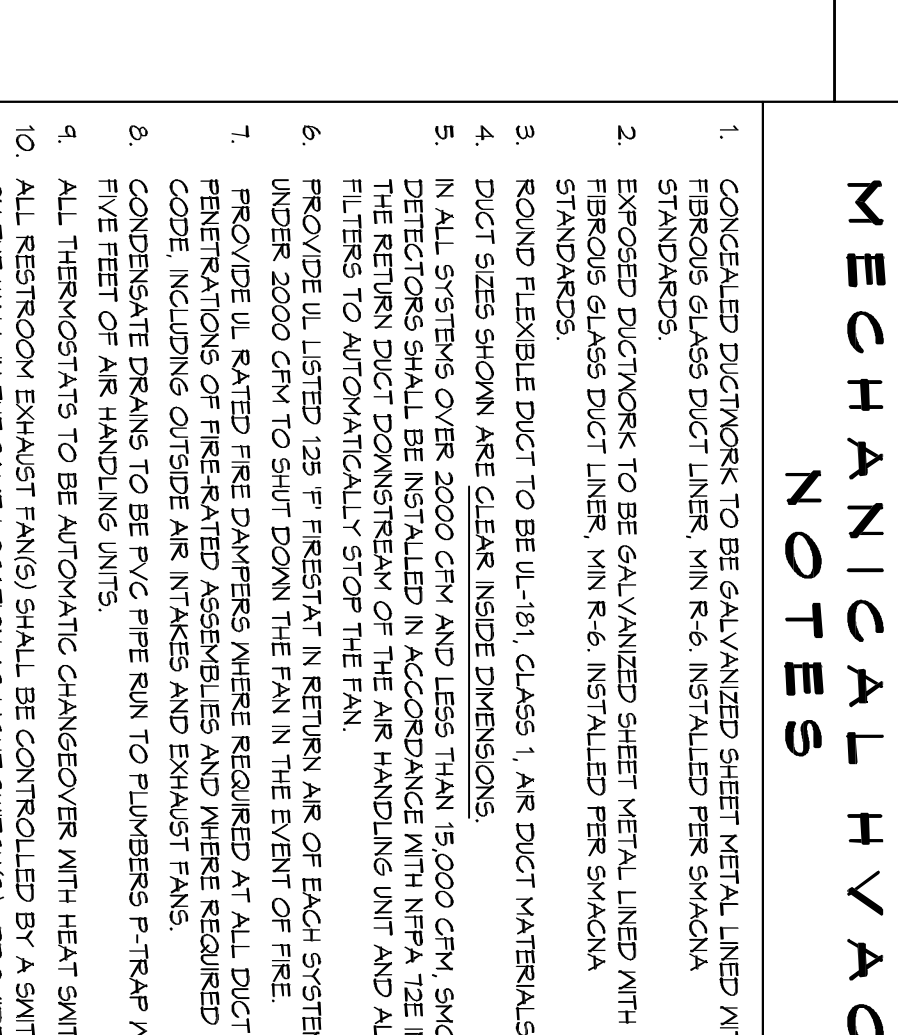
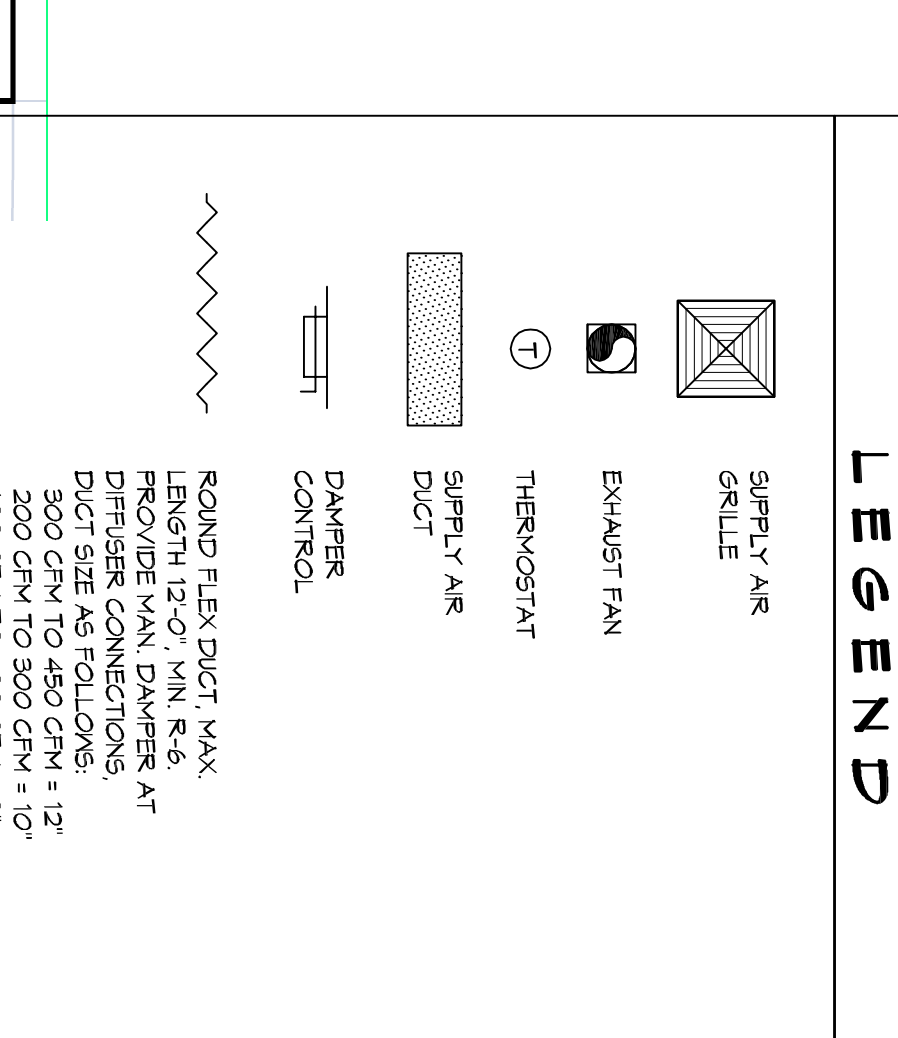
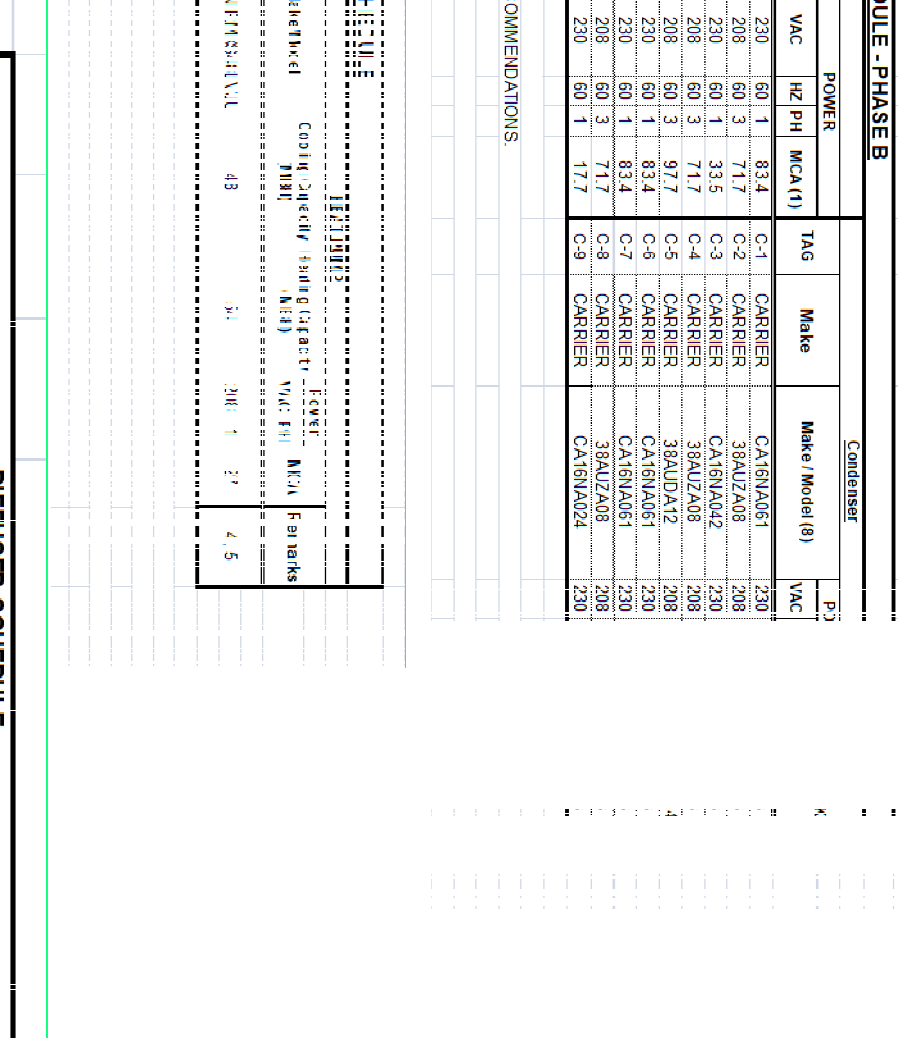


Model	Manufacturer	Model	Manufacturer	Model	Manufacturer
146	Model	Normal (Vol. CM) (Vol. CM)	Model	146	Model
147	Model	Normal (Vol. CM) (Vol. CM)	Model	147	Model
148	Model	Normal (Vol. CM) (Vol. CM)	Model	148	Model
149	Model	Normal (Vol. CM) (Vol. CM)	Model	149	Model
150	Model	Normal (Vol. CM) (Vol. CM)	Model	150	Model
151	Model	Normal (Vol. CM) (Vol. CM)	Model	151	Model
152	Model	Normal (Vol. CM) (Vol. CM)	Model	152	Model
153	Model	Normal (Vol. CM) (Vol. CM)	Model	153	Model
154	Model	Normal (Vol. CM) (Vol. CM)	Model	154	Model
155	Model	Normal (Vol. CM) (Vol. CM)	Model	155	Model
156	Model	Normal (Vol. CM) (Vol. CM)	Model	156	Model
157	Model	Normal (Vol. CM) (Vol. CM)	Model	157	Model
158	Model	Normal (Vol. CM) (Vol. CM)	Model	158	Model
159	Model	Normal (Vol. CM) (Vol. CM)	Model	159	Model
160	Model	Normal (Vol. CM) (Vol. CM)	Model	160	Model
161	Model	Normal (Vol. CM) (Vol. CM)	Model	161	Model
162	Model	Normal (Vol. CM) (Vol. CM)	Model	162	Model
163	Model	Normal (Vol. CM) (Vol. CM)	Model	163	Model
164	Model	Normal (Vol. CM) (Vol. CM)	Model	164	Model
165	Model	Normal (Vol. CM) (Vol. CM)	Model	165	Model
166	Model	Normal (Vol. CM) (Vol. CM)	Model	166	Model
167	Model	Normal (Vol. CM) (Vol. CM)	Model	167	Model
168	Model	Normal (Vol. CM) (Vol. CM)	Model	168	Model
169	Model	Normal (Vol. CM) (Vol. CM)	Model	169	Model
170	Model	Normal (Vol. CM) (Vol. CM)	Model	170	Model
171	Model	Normal (Vol. CM) (Vol. CM)	Model	171	Model
172	Model	Normal (Vol. CM) (Vol. CM)	Model	172	Model
173	Model	Normal (Vol. CM) (Vol. CM)	Model	173	Model
174	Model	Normal (Vol. CM) (Vol. CM)	Model	174	Model
175	Model	Normal (Vol. CM) (Vol. CM)	Model	175	Model
176	Model	Normal (Vol. CM) (Vol. CM)	Model	176	Model
177	Model	Normal (Vol. CM) (Vol. CM)	Model	177	Model
178	Model	Normal (Vol. CM) (Vol. CM)	Model	178	Model
179	Model	Normal (Vol. CM) (Vol. CM)	Model	179	Model
180	Model	Normal (Vol. CM) (Vol. CM)	Model	180	Model
181	Model	Normal (Vol. CM) (Vol. CM)	Model	181	Model
182	Model	Normal (Vol. CM) (Vol. CM)	Model	182	Model
183	Model	Normal (Vol. CM) (Vol. CM)	Model	183	Model
184	Model	Normal (Vol. CM) (Vol. CM)	Model	184	Model
185	Model	Normal (Vol. CM) (Vol. CM)	Model	185	Model
186	Model	Normal (Vol. CM) (Vol. CM)	Model	186	Model
187	Model	Normal (Vol. CM) (Vol. CM)	Model	187	Model
188	Model	Normal (Vol. CM) (Vol. CM)	Model	188	Model
189	Model	Normal (Vol. CM) (Vol. CM)	Model	189	Model
190	Model	Normal (Vol. CM) (Vol. CM)	Model	190	Model
191	Model	Normal (Vol. CM) (Vol. CM)	Model	191	Model
192	Model	Normal (Vol. CM) (Vol. CM)	Model	192	Model
193	Model	Normal (Vol. CM) (Vol. CM)	Model	193	Model
194	Model	Normal (Vol. CM) (Vol. CM)	Model	194	Model
195	Model	Normal (Vol. CM) (Vol. CM)	Model	195	Model
196	Model	Normal (Vol. CM) (Vol. CM)	Model	196	Model
197	Model	Normal (Vol. CM) (Vol. CM)	Model	197	Model
198	Model	Normal (Vol. CM) (Vol. CM)	Model	198	Model
199	Model	Normal (Vol. CM) (Vol. CM)	Model	199	Model
200	Model	Normal (Vol. CM) (Vol. CM)	Model	200	Model



Mark No.	Service	Neck Size	Description
1	Supply Air	12" x 24"	Adjustable Double Deflection Register with Volume Damper
2	Supply Air	12" x 24"	Adjustable Double Deflection Register with Volume Damper
3	Supply Air	12" x 24"	Adjustable Double Deflection Register with Volume Damper
4	Supply Air	12" x 24"	Adjustable Double Deflection Register with Volume Damper
5	Supply Air	12" x 24"	Adjustable Double Deflection Register with Volume Damper
6	Supply Air	12" x 24"	Adjustable Double Deflection Register with Volume Damper
7	Supply Air	12" x 24"	Adjustable Double Deflection Register with Volume Damper
8	Supply Air	12" x 24"	Adjustable Double Deflection Register with Volume Damper
9	Supply Air	12" x 24"	Adjustable Double Deflection Register with Volume Damper
10	Supply Air	12" x 24"	Adjustable Double Deflection Register with Volume Damper
11	Supply Air	12" x 24"	Adjustable Double Deflection Register with Volume Damper
12	Supply Air	12" x 24"	Adjustable Double Deflection Register with Volume Damper
13	Supply Air	12" x 24"	Adjustable Double Deflection Register with Volume Damper
14	Supply Air	12" x 24"	Adjustable Double Deflection Register with Volume Damper
15	Supply Air	12" x 24"	Adjustable Double Deflection Register with Volume Damper
16	Supply Air	12" x 24"	Adjustable Double Deflection Register with Volume Damper
17	Supply Air	12" x 24"	Adjustable Double Deflection Register with Volume Damper
18	Supply Air	12" x 24"	Adjustable Double Deflection Register with Volume Damper
19	Supply Air	12" x 24"	Adjustable Double Deflection Register with Volume Damper
20	Supply Air	12" x 24"	Adjustable Double Deflection Register with Volume Damper
21	Supply Air	12" x 24"	Adjustable Double Deflection Register with Volume Damper
22	Supply Air	12" x 24"	Adjustable Double Deflection Register with Volume Damper
23	Supply Air	12" x 24"	Adjustable Double Deflection Register with Volume Damper
24	Supply Air	12" x 24"	Adjustable Double Deflection Register with Volume Damper
25	Supply Air	12" x 24"	Adjustable Double Deflection Register with Volume Damper
26	Supply Air	12" x 24"	Adjustable Double Deflection Register with Volume Damper
27	Supply Air	12" x 24"	Adjustable Double Deflection Register with Volume Damper
28	Supply Air	12" x 24"	Adjustable Double Deflection Register with Volume Damper
29	Supply Air	12" x 24"	Adjustable Double Deflection Register with Volume Damper
30	Supply Air	12" x 24"	Adjustable Double Deflection Register with Volume Damper
31	Supply Air	12" x 24"	Adjustable Double Deflection Register with Volume Damper
32	Supply Air	12" x 24"	Adjustable Double Deflection Register with Volume Damper
33	Supply Air	12" x 24"	Adjustable Double Deflection Register with Volume Damper
34	Supply Air	12" x 24"	Adjustable Double Deflection Register with Volume Damper
35	Supply Air	12" x 24"	Adjustable Double Deflection Register with Volume Damper
36	Supply Air	12" x 24"	Adjustable Double Deflection Register with Volume Damper
37	Supply Air	12" x 24"	Adjustable Double Deflection Register with Volume Damper
38	Supply Air	12" x 24"	Adjustable Double Deflection Register with Volume Damper
39	Supply Air	12" x 24"	Adjustable Double Deflection Register with Volume Damper
40	Supply Air	12" x 24"	Adjustable Double Deflection Register with Volume Damper
41	Supply Air	12" x 24"	Adjustable Double Deflection Register with Volume Damper
42	Supply Air	12" x 24"	Adjustable Double Deflection Register with Volume Damper
43	Supply Air	12" x 24"	Adjustable Double Deflection Register with Volume Damper
44	Supply Air	12" x 24"	Adjustable Double Deflection Register with Volume Damper
45	Supply Air	12" x 24"	Adjustable Double Deflection Register with Volume Damper
46	Supply Air	12" x 24"	Adjustable Double Deflection Register with Volume Damper
47	Supply Air	12" x 24"	Adjustable Double Deflection Register with Volume Damper
48	Supply Air	12" x 24"	Adjustable Double Deflection Register with Volume Damper
49	Supply Air	12" x 24"	Adjustable Double Deflection Register with Volume Damper
50	Supply Air	12" x 24"	Adjustable Double Deflection Register with Volume Damper
51	Supply Air	12" x 24"	Adjustable Double Deflection Register with Volume Damper
52	Supply Air	12" x 24"	Adjustable Double Deflection Register with Volume Damper
53	Supply Air	12" x 24"	Adjustable Double Deflection Register with Volume Damper
54	Supply Air	12" x 24"	Adjustable Double Deflection Register with Volume Damper
55	Supply Air	12" x 24"	Adjustable Double Deflection Register with Volume Damper
56	Supply Air	12" x 24"	Adjustable Double Deflection Register with Volume Damper
57	Supply Air	12" x 24"	Adjustable Double Deflection Register with Volume Damper
58	Supply Air	12" x 24"	Adjustable Double Deflection Register with Volume Damper
59	Supply Air	12" x 24"	Adjustable Double Deflection Register with Volume Damper
60	Supply Air	12" x 24"	Adjustable Double Deflection Register with Volume Damper
61	Supply Air	12" x 24"	Adjustable Double Deflection Register with Volume Damper
62	Supply Air	12" x 24"	Adjustable Double Deflection Register with Volume Damper
63	Supply Air	12" x 24"	Adjustable Double Deflection Register with Volume Damper
64	Supply Air	12" x 24"	Adjustable Double Deflection Register with Volume Damper
65	Supply Air	12" x 24"	Adjustable Double Deflection Register with Volume Damper
66	Supply Air	12" x 24"	Adjustable Double Deflection Register with Volume Damper
67	Supply Air	12" x 24"	Adjustable Double Deflection Register with Volume Damper
68	Supply Air	12" x 24"	Adjustable Double Deflection Register with Volume Damper
69	Supply Air	12" x 24"	Adjustable Double Deflection Register with Volume Damper
70	Supply Air	12" x 24"	Adjustable Double Deflection Register with Volume Damper
71	Supply Air	12" x 24"	Adjustable Double Deflection Register with Volume Damper
72	Supply Air	12" x 24"	Adjustable Double Deflection Register with Volume Damper
73	Supply Air	12" x 24"	Adjustable Double Deflection Register with Volume Damper
74	Supply Air	12" x 24"	Adjustable Double Deflection Register with Volume Damper
75	Supply Air	12" x 24"	Adjustable Double Deflection Register with Volume Damper
76	Supply Air	12" x 24"	Adjustable Double Deflection Register with Volume Damper
77	Supply Air	12" x 24"	Adjustable Double Deflection Register with Volume Damper
78	Supply Air	12" x 24"	Adjustable Double Deflection Register with Volume Damper
79	Supply Air	12" x 24"	Adjustable Double Deflection Register with Volume Damper
80	Supply Air	12" x 24"	Adjustable Double Deflection Register with Volume Damper
81	Supply Air	12" x 24"	Adjustable Double Deflection Register with Volume Damper
82	Supply Air	12" x 24"	Adjustable Double Deflection Register with Volume Damper
83	Supply Air	12" x 24"	Adjustable Double Deflection Register with Volume Damper
84	Supply Air	12" x 24"	Adjustable Double Deflection Register with Volume Damper
85	Supply Air	12" x 24"	Adjustable Double Deflection Register with Volume Damper
86	Supply Air	12" x 24"	Adjustable Double Deflection Register with Volume Damper
87	Supply Air	12" x 24"	Adjustable Double Deflection Register with Volume Damper
88	Supply Air	12" x 24"	Adjustable Double Deflection Register with Volume Damper
89	Supply Air	12" x 24"	Adjustable Double Deflection Register with Volume Damper
90	Supply Air	12" x 24"	Adjustable Double Deflection Register with Volume Damper
91	Supply Air	12" x 24"	Adjustable Double Deflection Register with Volume Damper
92	Supply Air	12" x 24"	Adjustable Double Deflection Register with Volume Damper
93	Supply Air	12" x 24"	Adjustable Double Deflection Register with Volume Damper
94	Supply Air	12" x 24"	Adjustable Double Deflection Register with Volume Damper
95	Supply Air	12" x 24"	Adjustable Double Deflection Register with Volume Damper
96	Supply Air	12" x 24"	Adjustable Double Deflection Register with Volume Damper
97	Supply Air	12" x 24"	Adjustable Double Deflection Register with Volume Damper
98	Supply Air	12" x 24"	Adjustable Double Deflection Register with Volume Damper
99	Supply Air	12" x 24"	Adjustable Double Deflection Register with Volume Damper
100	Supply Air	12" x 24"	Adjustable Double Deflection Register with Volume Damper



MECHANICAL HVAC NOTES

- COVERED DUCTWORK TO BE GALVANIZED SHEET METAL LINED WITH FIBROGLASS DUCT LINER. MIN R-6. INSTALLED PER SWACNA STANDARDS.
- EXPOSED DUCTWORK TO BE GALVANIZED SHEET METAL LINED WITH FIBROGLASS DUCT LINER. MIN R-6. INSTALLED PER SWACNA STANDARDS.
- DUCT FLEXIBLE DUCT TO BE UL-181, CLASS 1, AIR DUCT MATERIALS.
- DUCT SIZES SHOWN ARE CLEAR INSIDE DIMENSIONS.
- IN ALL SYSTEMS OVER 2000 CFM AND LESS THAN 15,000 CFM, SMOKE DETECTORS SHALL BE INSTALLED IN ACCORDANCE WITH NFPA 12E IN THE RETURN DUCT DOWNSTREAM OF THE AIR HANDLING UNIT AND ALL FILTERS TO AUTOMATICALLY STOP THE FAN.
- PROVIDE UL LISTED 125 F FRESH AIR IN RETURN AIR OF EACH SYSTEM UNDER 2000 CFM TO SHUT DOWN THE FAN IN THE EVENT OF FIRE.
- PROVIDE UL RATED FIRE RATED ASSEMBLIES AND WHERE REQUIRED BY CODE, INCLUDING OUTSIDE AIR INTAKES AND EXHAUST FANS.
- CONDENSATE DRAINS TO BE PVC PIPE RUN TO PLUMBERS P-TAP WITHIN FIVE FEET OF AIR HANDLING UNITS.
- ALL THROUGHPUTS TO BE AUTOMATIC CHANGED OVER WITH HEAT SWITCH.
- ALL RESTROOM EXHAUST FAN(S) SHALL BE CONTROLLED BY A SWITCH ON THE WALL IN THE SAME LOCATION AS LIGHT SWITCH(S). PROVIDE BACK DRAFFT DAMPER.
- PROVIDE AND INSTALL WATER PROOF GRILLE VENT IN PROPER ROOF LOCATION FOR PLUMBING FIXTURE EXHAUST.
- ALL SUPPLY AIR VENTS SHALL BE EQUIPPED WITH AIR CONTROL DAMPERS AT THE REGISTER.
- FRESH AIR SHALL BE SUPPLIED TO EACH AIR HANDLER THROUGH EXTERIOR WALL DUCT SUPPLIED WITH A CONTROL DAMPER.
- ALL ELECTRICAL, MECHANICAL, AND PLUMBING PENETRATING FIRE WALLS SHALL BE FIRE CALLED. PENETRATIONS THROUGH RATED PENETRATIONS SHALL BE SEaled WITH A MATERIAL CAPABLE OF PENETRATING WITH ASTM E-141.
- ALL MECHANICAL SYMBOLS ARE DRAWN DIMENSIONALLY ACCORDANCE WITH ASTM E-141.
- CONTRACTORS TO VERIFY WITH OWNER LOCATIONS OF VENTS, DAMPERS, REGISTERS, ETC.
- FLEXIBLE DUCTWORK LENGTH NOT TO EXCEED 15'-0".
- REFER TO REFLECTED CEILING PLAN FOR FINAL GRILLE AND DIFFUSER LOCATIONS AND COORDINATE AS REQUIRED.
- FINAL LOCATION OF TEMPERATURE CONTROLS TO BE COORDINATED WITH OWNER AT JOB SITE.
- PROVIDE AND INSTALL SMOKE DETECTORS AS APPROVED BY LOCAL AUI'S. PLACE NEAR R/A AND S/A OPENINGS OF A/U AND PROVIDE ACCESS PANEL, WIRING BY ELECTRICAL CONTRACTOR IF REQUIRED.
- FRESH AIR INTAKES ARE REQUIRED TO HAVE NOT RAINING DAMPERS TO SHUT OFF WHEN SYSTEM IS NOT RAINING.
- PROVIDE BIRD SCREENS AT ALL EXTERIOR MECHANICAL PENETRATIONS.
- CONTRACTOR SHALL PROVIDE A MEANS FOR ATTIC VENTILATION FOR THE MOVEMENT OF AIR ABOVE DROP CEILING(S) EITHER BY MECHANICAL VENTS OR POWER VENTS.

MECHANICAL HVAC NOTES

- COVERED DUCTWORK TO BE GALVANIZED SHEET METAL LINED WITH FIBROGLASS DUCT LINER. MIN R-6. INSTALLED PER SWACNA STANDARDS.
- EXPOSED DUCTWORK TO BE GALVANIZED SHEET METAL LINED WITH FIBROGLASS DUCT LINER. MIN R-6. INSTALLED PER SWACNA STANDARDS.
- DUCT FLEXIBLE DUCT TO BE UL-181, CLASS 1, AIR DUCT MATERIALS.
- DUCT SIZES SHOWN ARE CLEAR INSIDE DIMENSIONS.
- IN ALL SYSTEMS OVER 2000 CFM AND LESS THAN 15,000 CFM, SMOKE DETECTORS SHALL BE INSTALLED IN ACCORDANCE WITH NFPA 12E IN THE RETURN DUCT DOWNSTREAM OF THE AIR HANDLING UNIT AND ALL FILTERS TO AUTOMATICALLY STOP THE FAN.
- PROVIDE UL LISTED 125 F FRESH AIR IN RETURN AIR OF EACH SYSTEM UNDER 2000 CFM TO SHUT DOWN THE FAN IN THE EVENT OF FIRE.
- PROVIDE UL RATED FIRE RATED ASSEMBLIES AND WHERE REQUIRED BY CODE, INCLUDING OUTSIDE AIR INTAKES AND EXHAUST FANS.
- CONDENSATE DRAINS TO BE PVC PIPE RUN TO PLUMBERS P-TAP WITHIN FIVE FEET OF AIR HANDLING UNITS.
- ALL THROUGHPUTS TO BE AUTOMATIC CHANGED OVER WITH HEAT SWITCH.
- ALL RESTROOM EXHAUST FAN(S) SHALL BE CONTROLLED BY A SWITCH ON THE WALL IN THE SAME LOCATION AS LIGHT SWITCH(S). PROVIDE BACK DRAFFT DAMPER.
- PROVIDE AND INSTALL WATER PROOF GRILLE VENT IN PROPER ROOF LOCATION FOR PLUMBING FIXTURE EXHAUST.
- ALL SUPPLY AIR VENTS SHALL BE EQUIPPED WITH AIR CONTROL DAMPERS AT THE REGISTER.
- FRESH AIR SHALL BE SUPPLIED TO EACH AIR HANDLER THROUGH EXTERIOR WALL DUCT SUPPLIED WITH A CONTROL DAMPER.
- ALL ELECTRICAL, MECHANICAL, AND PLUMBING PENETRATING FIRE WALLS SHALL BE FIRE CALLED. PENETRATIONS THROUGH RATED PENETRATIONS SHALL BE SEaled WITH A MATERIAL CAPABLE OF PENETRATING WITH ASTM E-141.
- ALL MECHANICAL SYMBOLS ARE DRAWN DIMENSIONALLY ACCORDANCE WITH ASTM E-141.
- CONTRACTORS TO VERIFY WITH OWNER LOCATIONS OF VENTS, DAMPERS, REGISTERS, ETC.
- FLEXIBLE DUCTWORK LENGTH NOT TO EXCEED 15'-0".
- REFER TO REFLECTED CEILING PLAN FOR FINAL GRILLE AND DIFFUSER LOCATIONS AND COORDINATE AS REQUIRED.
- FINAL LOCATION OF TEMPERATURE CONTROLS TO BE COORDINATED WITH OWNER AT JOB SITE.
- PROVIDE AND INSTALL SMOKE DETECTORS AS APPROVED BY LOCAL AUI'S. PLACE NEAR R/A AND S/A OPENINGS OF A/U AND PROVIDE ACCESS PANEL, WIRING BY ELECTRICAL CONTRACTOR IF REQUIRED.
- FRESH AIR INTAKES ARE REQUIRED TO HAVE NOT RAINING DAMPERS TO SHUT OFF WHEN SYSTEM IS NOT RAINING.
- PROVIDE BIRD SCREENS AT ALL EXTERIOR MECHANICAL PENETRATIONS.
- CONTRACTOR SHALL PROVIDE A MEANS FOR ATTIC VENTILATION FOR THE MOVEMENT OF AIR ABOVE DROP CEILING(S) EITHER BY MECHANICAL VENTS OR POWER VENTS.