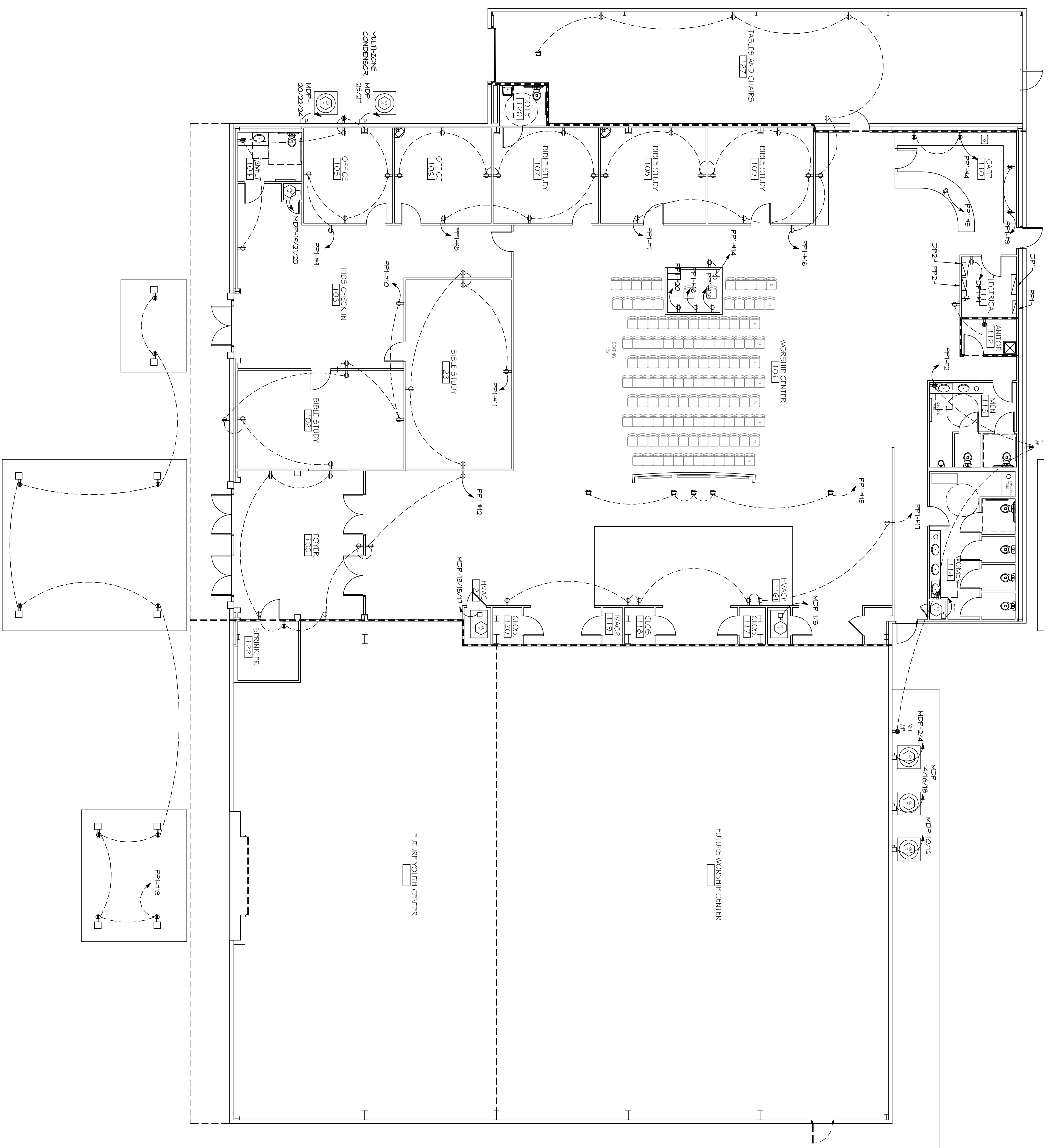


**GENERAL ELEC
POWER NOTES**

1. ALL WORK SHALL CONFORM TO THE LATEST EDITION OF THE NATIONAL ELECTRICAL CODE, THE GOVERNING ELECTRICAL CODE AND ALL OTHER ELECTRICAL DEPARTMENTS HAVING JURISDICTION. CERTAIN CERTIFICATES OR APPROVALS MAY BE REQUIRED. ELECTRICAL CONTRACTOR SHALL VERIFY ALL WIRE AND CONDUIT SIZES FOR MECHANICAL EQUIPMENT TO BE INSTALLED.
2. ALL MATERIALS FINISHED SHALL BE NEW AND SHALL BE U.L. LISTED. THE DRAWINGS INDICATE SIZE AND GENERAL LOCATION OF WORK. SCALE DIMENSIONS SHALL NOT BE USED. THE EXACT LOCATION OF ALL LIGHTING FIXTURES, RECEPTACLES AND TELEPHONE OUTLETS, ETC., SHALL BE DETERMINED BY ACTUAL CONDITIONS IN THE FIELD.
3. PRIOR TO BEGING, CONTRACTOR SHALL VISIT THE JOB SITE AND FAMILIARIZE THEMSELVES WITH THE EXISTING CONDITIONS.
4. ELECTRICAL CONTRACTOR SHALL COORDINATE HIS WORK WITH OTHER CONTRACTORS WHOSE WORK MAY AFFECT THIS INSTALLATION.
5. ELECTRICAL CONTRACTOR SHALL COORDINATE REWORKING ELECTRICAL SERVICE WITH UTILITY COMPANY AND INCLUDE IN HIS BID ALL CHARGES AND FEES INCURRED IN MODIFICATIONS.
6. ELECTRICAL CONTRACTOR SHALL COORDINATE THE TELEPHONE INSTALLATION WITH THE TELEPHONE COMPANY AND THE GENERAL CONTRACTOR.
7. WHERE MORE THAN ONE SWITCH OCCURS IN THE SAME LOCATION, THEY SHALL BE INSTALLED IN A GANG TYPE BOX UNDER ONE COVER PLATE.
8. ELECTRICAL CONTRACTOR, BEFORE INSTALLING ANY OF THE WORK SHALL SEE THAT IT DOES NOT INTERFERE WITH CLEARANCES REQUIRED FOR FINISHED COLUMNS, HUNG CEILING, PLASTER PARTITIONS, WALLS, ETC. AS SHOWN IN THE ARCHITECTURAL DRAWINGS AND DETAILS. IF ANY INTERFERENCE IS ENCOUNTERED, THE CONTRACTOR SHALL NOTIFY THE ARCHITECT IMMEDIATELY. THE CONTRACTOR SHALL BE RESPONSIBLE FOR ANY EXPENSE THAT MAY BE INCURRED AS A RESULT OF SUCH INTERFERENCE. THE CONTRACTOR SHALL MAKE SUCH CHANGES IN THE WORK AS DIRECTED BY THE ARCHITECT, AS WELL AS TO PERMIT THE INSTALLATION OF THE ARCHITECTURAL WORK AS SHOWN ON THE PLANS AND DETAILS.
9. PERFORM TEST REQUIRED BY THE OWNER OR THE ENGINEER IN CONNECTION WITH THE OPERATION OF THE ELECTRICAL SYSTEM IN THE BUILDING. ALL TESTS SHALL BE MADE IN ACCORDANCE WITH THE LATEST EDITION OF THE IEEE AND THE NATIONAL ELECTRICAL CODE.
10. MINIMUM CONDUCTOR SIZE SHALL BE #12, 600V INSULATION MINIMUM SIZE CONDUIT SHALL BE 3/4" ELECTRICAL METAL TUBING (EMT) FOR NON-FERROUS METALS AND 1" FOR FERROUS METALS. NON-METALLIC CABLE (NMC) CABLE COPPER FOR LIGHTS AND RECEPTACLE CIRCUITS IN WOOD FRAME CONSTRUCTION AREAS ONLY. IN STEEL FRAMING AREAS THE USE OF EMT (MINIMUM) IS REQUIRED. EXTERIOR FITTINGS SHALL BE CAST BOXES AND COVERS. INTERIOR FITTINGS SHALL BE STAMPED BOXES.
11. CONTRACTOR SHALL INSTALL WIRING AND OTHER CIRCUIT COMPONENTS TO MATCH EQUIPMENT ACTUALLY INSTALLED.
12. INSTALL GROUND FAULT RECEPTACLES AT RECEPTACLE LOCATIONS WITHIN 5' OF SINKS OR LAVATORIES, AND AT EXTERIOR LOCATIONS. EXTERIOR RECEPTACLES SHALL ALSO BE WATERPROOF.
13. BONDING AND GROUNDING SHALL BE IN ACCORDANCE WITH NFPA 70:230-63, NFPA 70:250-23, 250-71 & 250-72.
14. GROUND NEUTRAL IN ACCORDANCE WITH NFPA 70:250-230.
15. FIRES SHALL BE TT CLASS 55, 250 VOLT, 200,000 AMP INTERRUPTING CAP.
16. PROVIDE SERVICES OF A FIRE/SMOKE DETECTION AND ALARM COMPANY TO DESIGN AND INSTALL ALARM SYSTEM TO MEET REQUIREMENTS OF THE STATE FIRE MARSHALL AND THE FIRE DISTRICT.
17. EXTERIOR LIGHTING SHALL BE SHAWD OR INWARDLY DIRECTED IN SUCH A MANNER SO THAT IT DOES NOT ILLUMINE OR GLARE ON ADJACENT AREAS. THE HEIGHT OF THE LIGHTS SHALL BE AS MEASURED AT THE ADJUTING PROPERTY LINE.
18. ALL ELECTRICAL, MECHANICAL AND PLUMBING PENETRATIONS THROUGH PARTITIONS SHALL BE FIRE CALKED. PENETRATIONS THROUGH RATED CONSTRUCTION SHALL BE SEALED WITH A MATERIAL CAPABLE OF PREVENTING THE PASSAGE OF FLAMES AND HOT GASES WHEN TESTED IN ACCORDANCE WITH ASTM E814.
19. VERIFY ELECTRICAL CONNECTIONS PER MANUFACTURERS RECOMMENDATIONS.

LEGEND

- | SYMB | DESCRIPTION |
|------|---|
| ⊕ | STANDARD 120V DUPLEX RECEPTACLE NEMA 5-2 OR 15' AFF (UNLESS OTHERWISE NOTED) |
| ⊕ | STANDARD 120V DUPLEX RECEPTACLE ABOVE COUNTER HT. |
| ⊕ | SINGLE POLE DEPENDANT RECEPTACLE - REFER TO PANEL SCHEDULE FOR CIRCUIT SIZE |
| ⊕ | 6FCI DUPLEX RECEPTACLE |
| ⊕ | 6FCI QUAD RECEPTACLE |
| ⊕ | 220V ELECTRIC DRYER RECEPTACLE - MOUNTED AT 30' AFF |
| ⊕ | 220V DEICATED 6FCI RECEPTACLE |
| ⊕ | VENTILATION-ROOF 6FCI DUPLEX RECEPTACLE MOUNTED AT 30' AFF (UNLESS OTHERWISE NOTED) |
| ⊕ | STANDARD 120V DUPLEX RECEPTACLE - FLOOR OR CLG. MOUNTED |
| ⊕ | STANDARD QUAD RECEPTACLE - WALL-MOUNTED |
| ⊕ | 125V, 15 AMP DUPLEX-USB 5VDC 3 AMP HUBBELL USB CHARGER RECEPTACLE |
| ⊕ | 125V, 15 AMP QUAD-USB 5VDC 3 AMP HUBBELL USB CHARGER RECEPTACLE |
| ⊕ | JUNCTION BOX |
| ⊕ | GENERATOR BATTERY CHARGER |
| ⊕ | 2-BUTTON PUSH BUTTON STATION |
| ⊕ | COAX-CABLE CONNECTION FOR TELEVISION |
| ⊕ | WALL MOUNTED DATA OUTLET |
| ⊕ | FLOOR DATA OUTLET |
| ⊕ | POWER DISCONNECT |
| ⊕ | WATER HEATER ON DECK OR MEZZANINE ABOVE - SIZE AS NOTED ON PLAN |
| ⊕ | EXHAUST FAN - SEE MECH. |
- NOTES:**
 1. POWER SOURCE
 2. POWER SOURCE
 3. POWER SOURCE



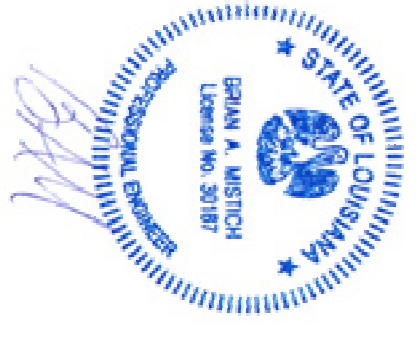
POWER PLAN PHASE A
 SCALE: 1/8\"/>

DAMMON ENGINEERING, INC.
 LOUISIANA & MISSISSIPPI

Chief Engineer: Brian Mistich, PE
 554 Old Spanish Trail
 Sudest, LA 70458

www.dammonengineering.com
 info@dammonengineering.com
 PH: 985.649.5832 F: 985.641.5950

REVISIONS	
#	DESCRIPTION



GRACE BELLOWSHIP

34442 WILLIS ALLEY
 PEARL RIVER LA.

JOB No: 2340 DATE: 04/30/2018
 DRAWN BY: CKD CHECKED BY: BAM

SHEET TITLE:
 POWER PLAN
 PHASE A

DRAWING NUMBER:
E101

SHEET No. 13 OF 13