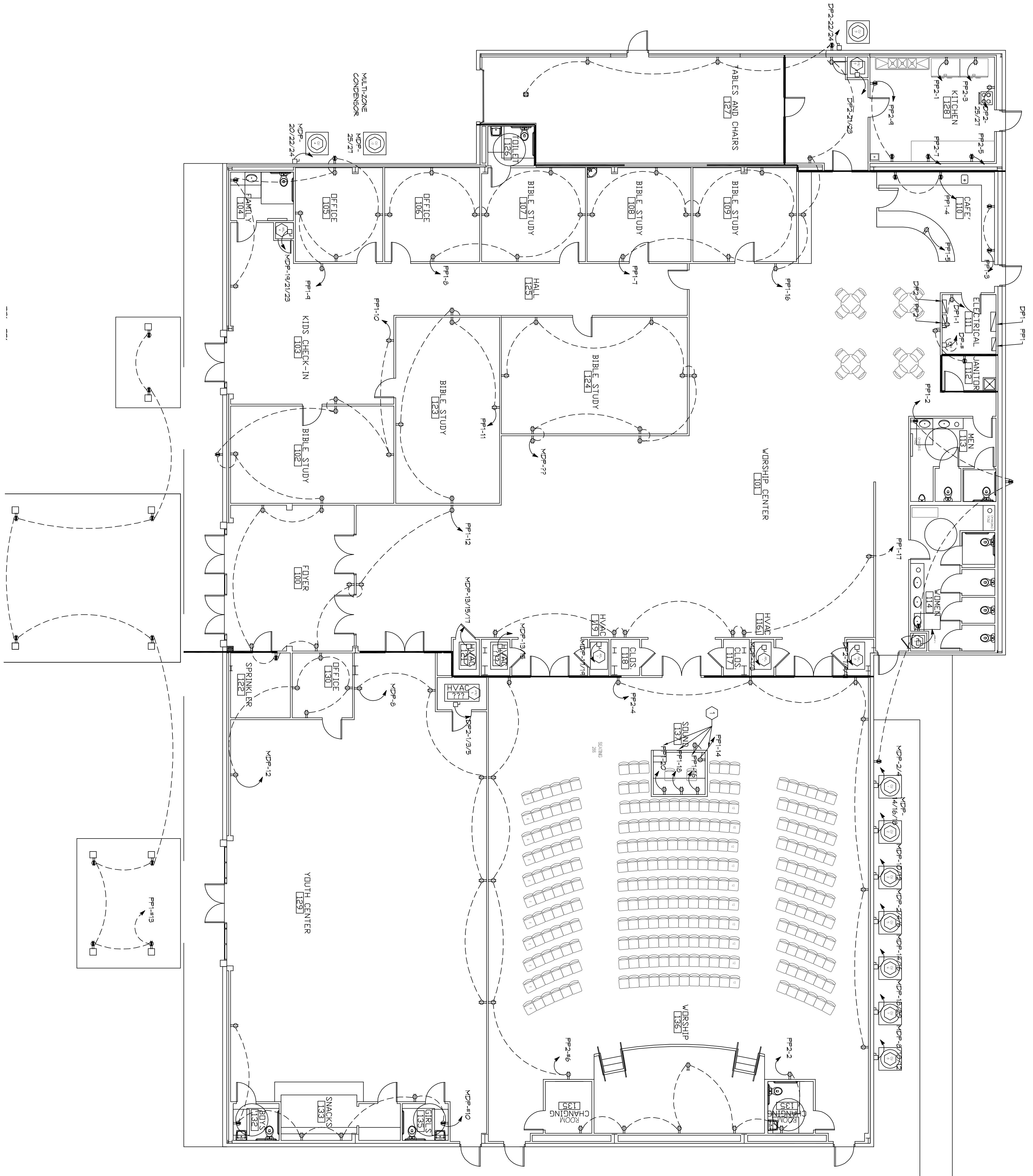


2 POWER PLAN PHASE B
SCALE: 1/8"=1'-0"



GENERAL NOTES

- 1) RELOCATE CIRCUITS FOR SOUND EQUIPMENT.

DAMMON ENGINEERING, INC.
LOUISIANA & MISSISSIPPI

Chief Engineer: Brian Mistich, PE
554 Old Spanish Trail
Suldel, LA 70458

www.dammonengineering.com
info@dammonengineering.com
PH: 985.649.5832 F: 985.641.5950

REVISIONS	
#	DESCRIPTION



GRACE FELLOWSHIP

34492 WILLIS ALLEY
PEARL RIVER LA.

JOB No: 2340 DATE: 04/30/2018

DRAWN BY: CKD CHECKED BY: BAM

Not shown reviews and specifications, design and measurements responsible for the work and shall remain the property of Dammon Engineering, Inc. No part of these drawings shall be copied, reproduced, or used in connection with any work on any project other than the specific project for which they have been prepared and, if changed, without written consent of Dammon Engineering, Inc. All drawings shall be prepared in accordance with the current edition of the National Electrical Code (NEC) and the Louisiana Electrical Code.

SHEET TITLE:
POWER PLAN PHASE B

DRAWING NUMBER:
E102

SHEET No. 14 of 18