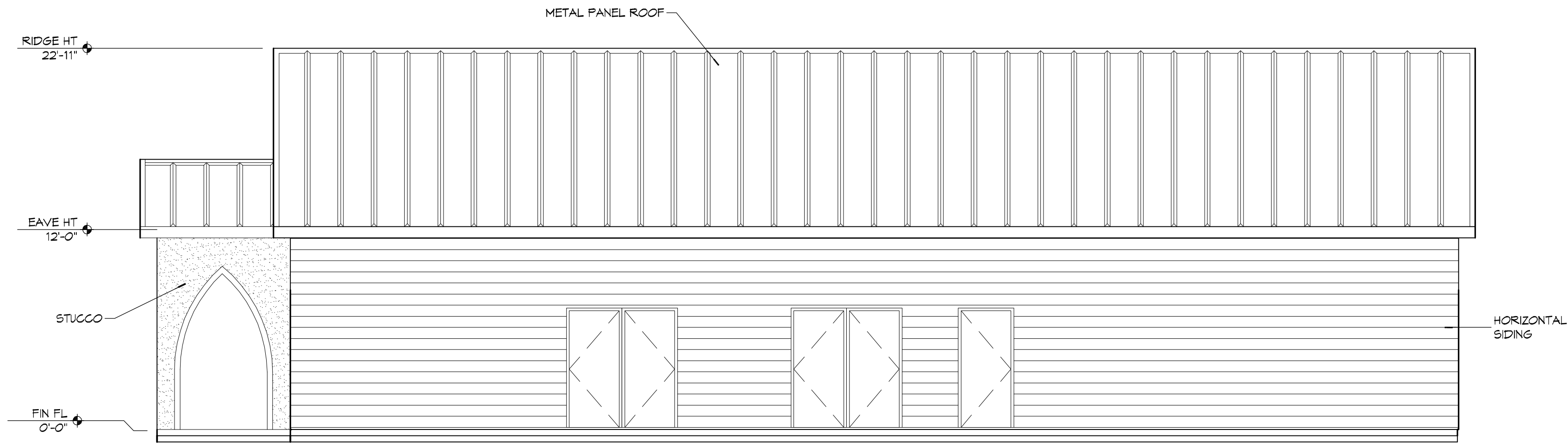
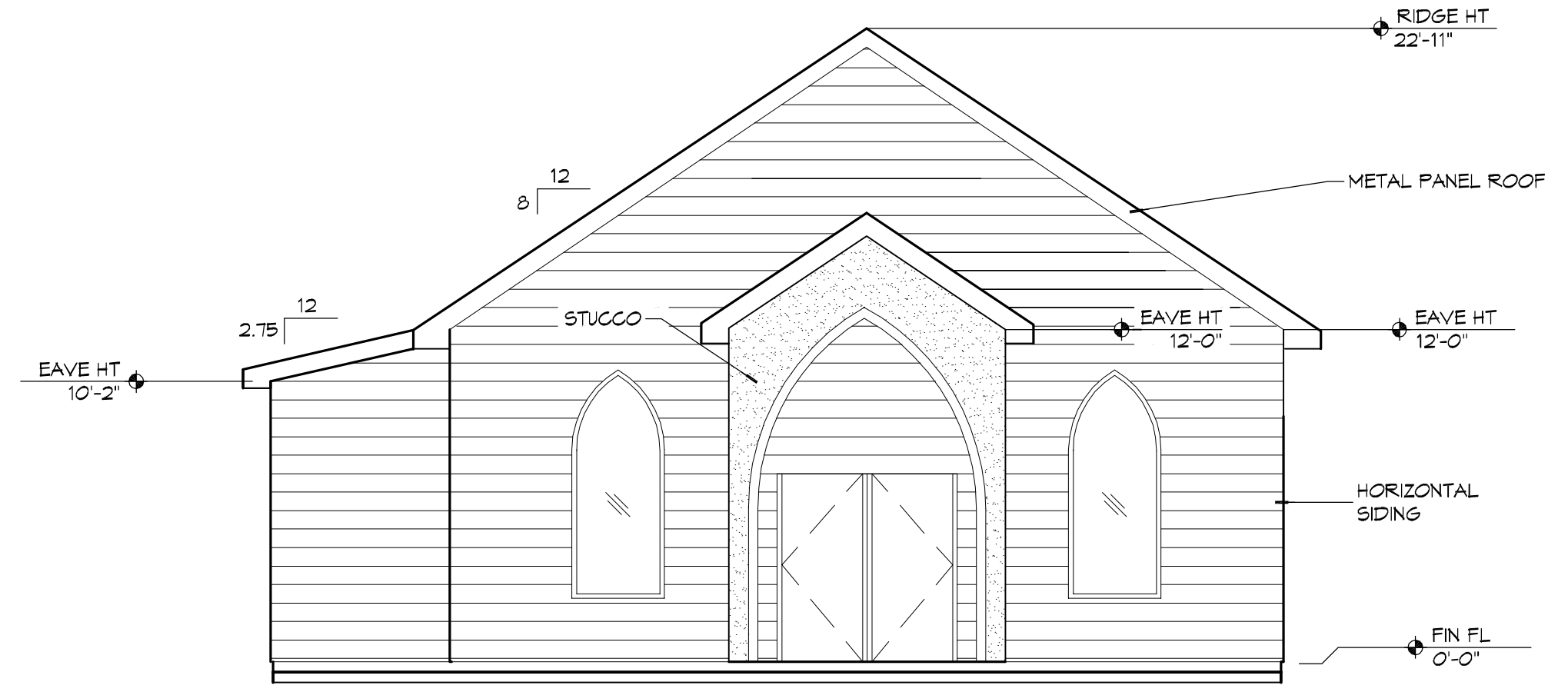


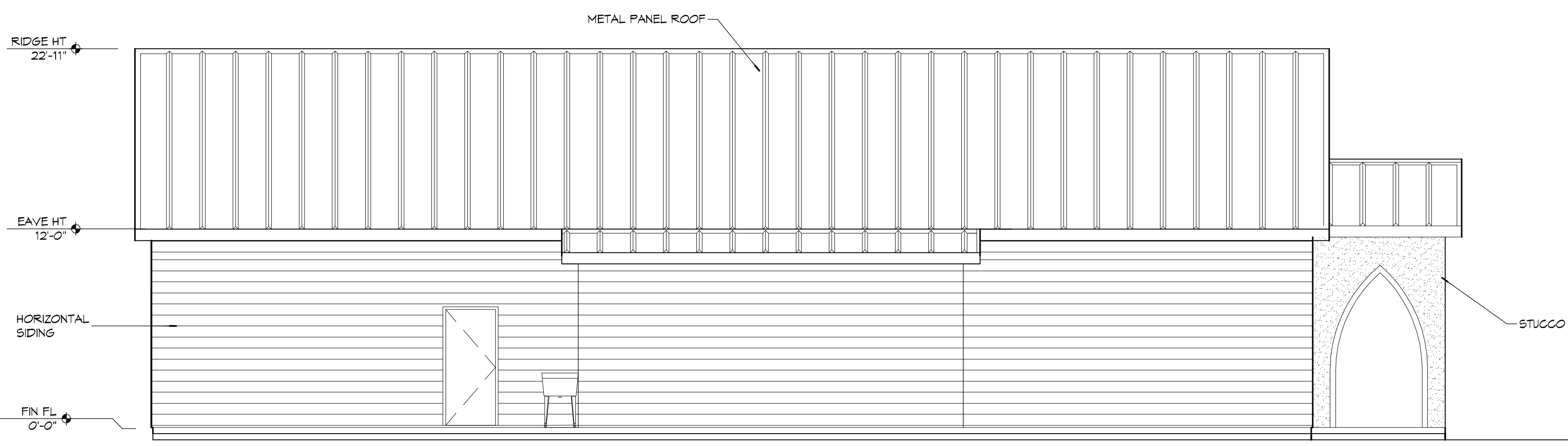
FILE NAME: J:_CHURCHES\3370 - Our Lady of Loretto Church\3370.dwg DATE: 07/15/2020 9:10:46 AM



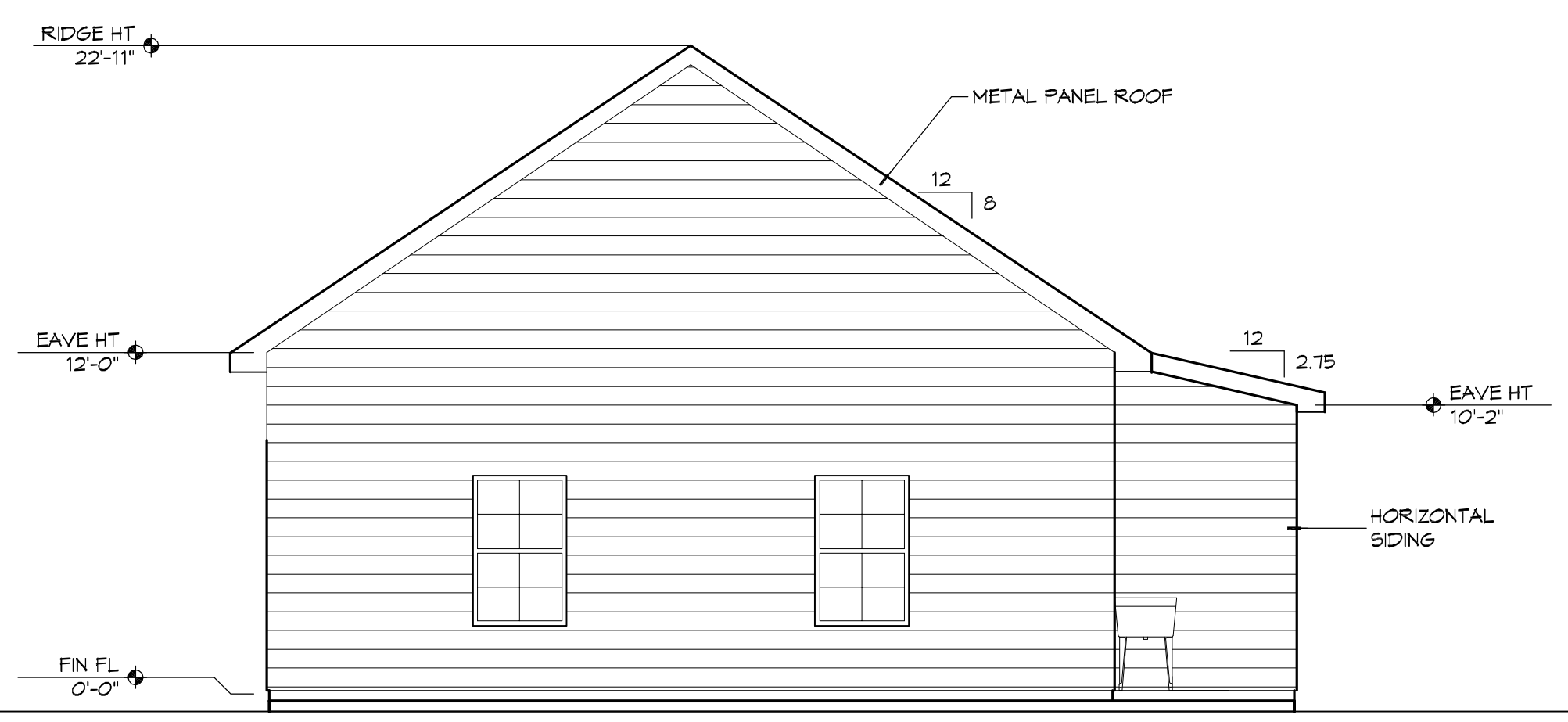
11 EXTERIOR ELEVATION
SCALE: 3/16" = 1'-0"
N



10 EXTERIOR ELEVATION
SCALE: 3/16" = 1'-0"
SOUTH N WEST



9 EXTERIOR ELEVATION
SCALE: 3/16" = 1'-0"
N



8 EXTERIOR ELEVATION
SCALE: 3/16" = 1'-0"
N NORTH EAST

DAMMON ENGINEERING, INC.
LOUISIANA & MISSISSIPPI
Chief Engineer: Brian Mistich, PE
www.dammonengineering.com
554 Old Spanish Trail
Slidell, LA 70458
info@dammonengineering.com
PH: 985.649.5832

#	DESCRIPTION	DATE

SEAL:

MULTI PURPOSE BUILDING
OF OUR LADY OF A

6610 VORTSCH ROAD
LACOMBE, LOUISIANA 70445
JOB No: 2510 DATE: 07/15/2020
DRAWN BY: RLD CHECKED BY: CKD

SHEET TITLE:
EXTERIOR ELEVATIONS

DRAWING NUMBER:
A103