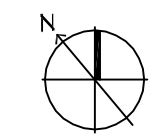
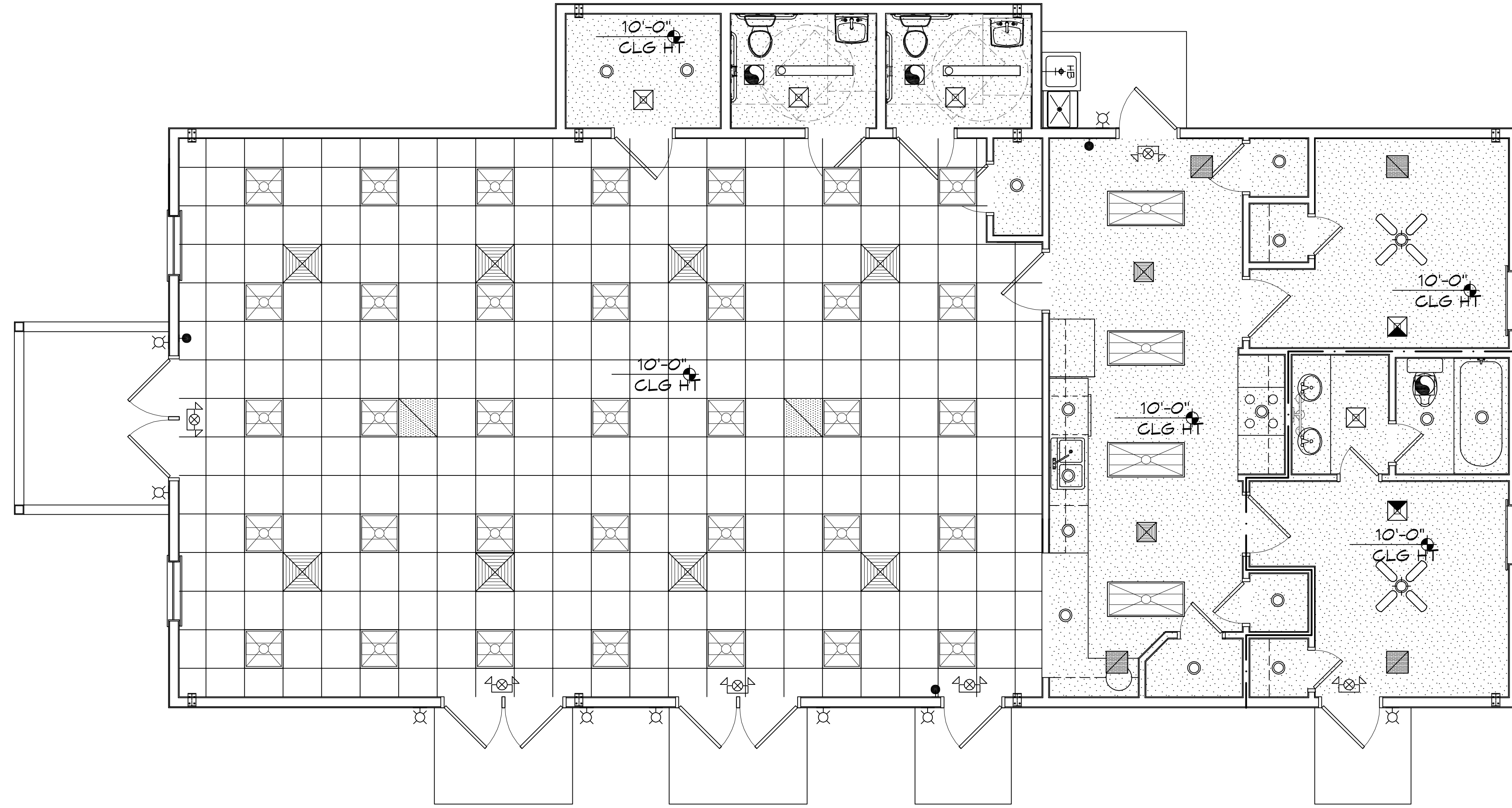


FILE NAME: A:\1 - DUDDEK3310 - Our Lady of Loretto License Change\Current\020445\_102.dwg DATE: 8/20/2020 7:50:15 AM



**REFLECTED CEILING PLAN**  
SCALE: 1/4" = 1'-0"

LEGEND			
	AIR SUPPLY GRILLE (24X24)		RECESSED LIGHT
	RETURN AIR GRILLE		PENDANT LIGHT
	AIR SUPPLY GRILLE (12X12)		EXTERIOR WALL LIGHT
	EMERGENCY LIGHT		2X4 FLUORESCENT
			CEILING MOUNTED EXIT LIGHT
			VANITY LIGHT

**DAMMON**  
ENGINEERING, INC.  
LOUISIANA & MISSISSIPPI

Chief Engineer: Brian Metch, PE  
554 Old Spanish Trail  
Stidell, LA 70668  
www.dammonengineering.com  
info@dammonengineering.com  
PH: 985.649.5632

REVISIONS	DATE	#	DESCRIPTION

SEAL:

MULTI PURPOSE BUILDING

**OUR LADY OF A T I M A**

68110 VORTSCH ROAD  
LACOMBE, LOUISIANA 70445

JOB No: 2370 DATE: 07-15-2020  
DRAWN BY: RLD CHECKED BY: CKD

SHEET TITLE:  
REFLECTED CEILING PLAN

DRAWING NUMBER:  
**A102**